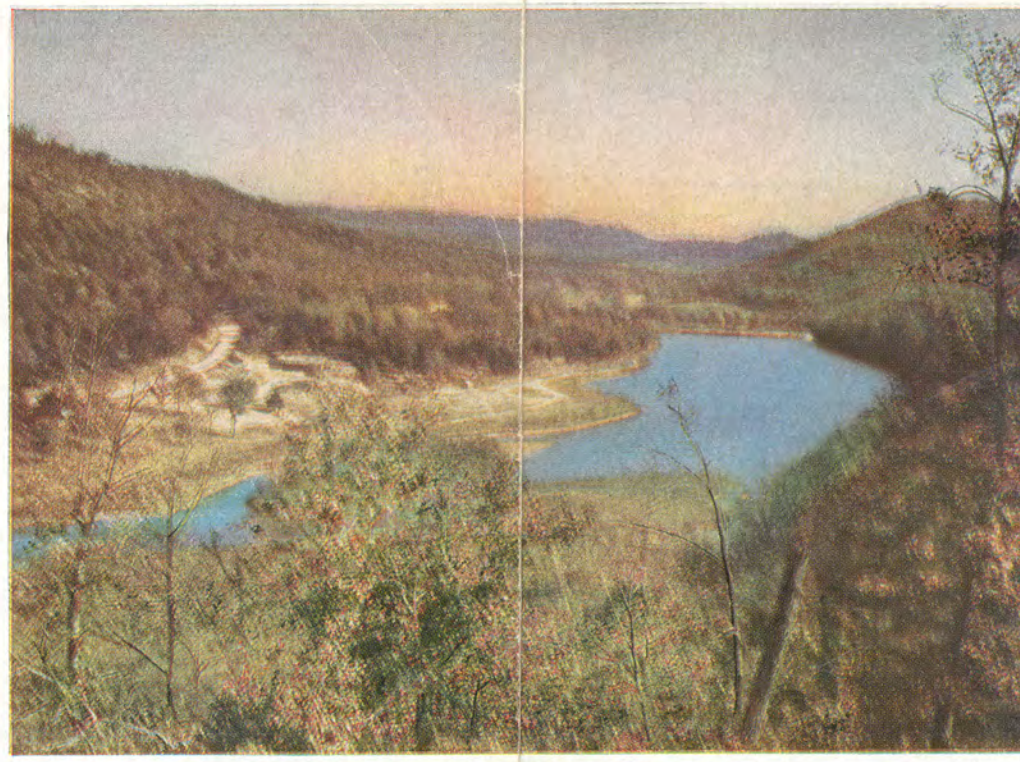




Nelson-Atkins Gallery of Art—Kansas City, Mo.



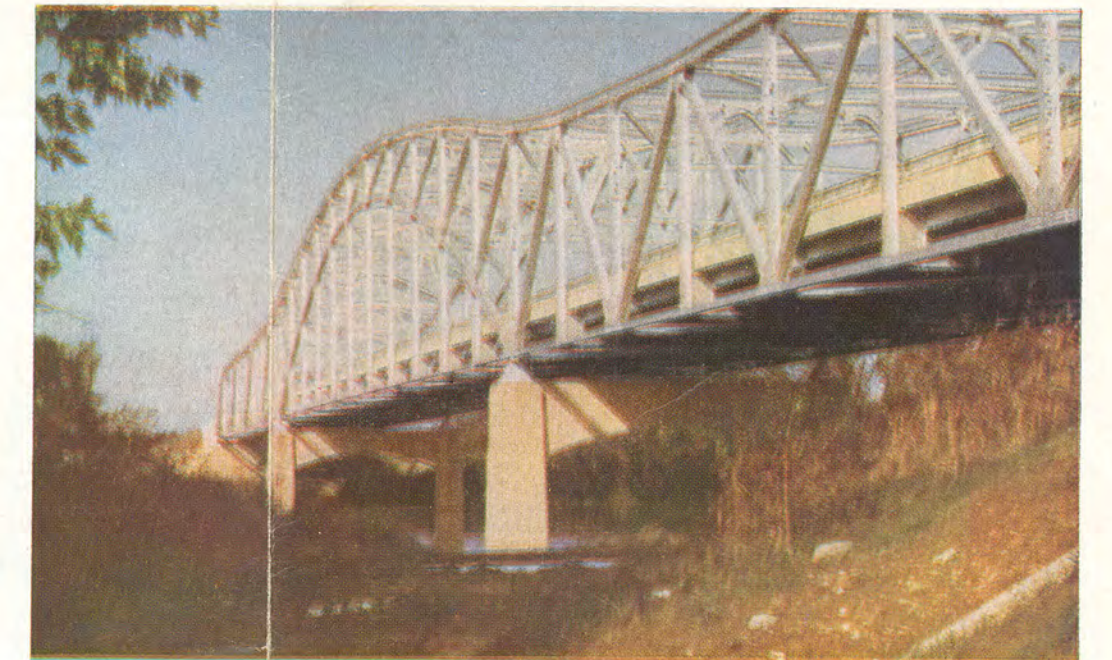
The Ozarks in flaming review.



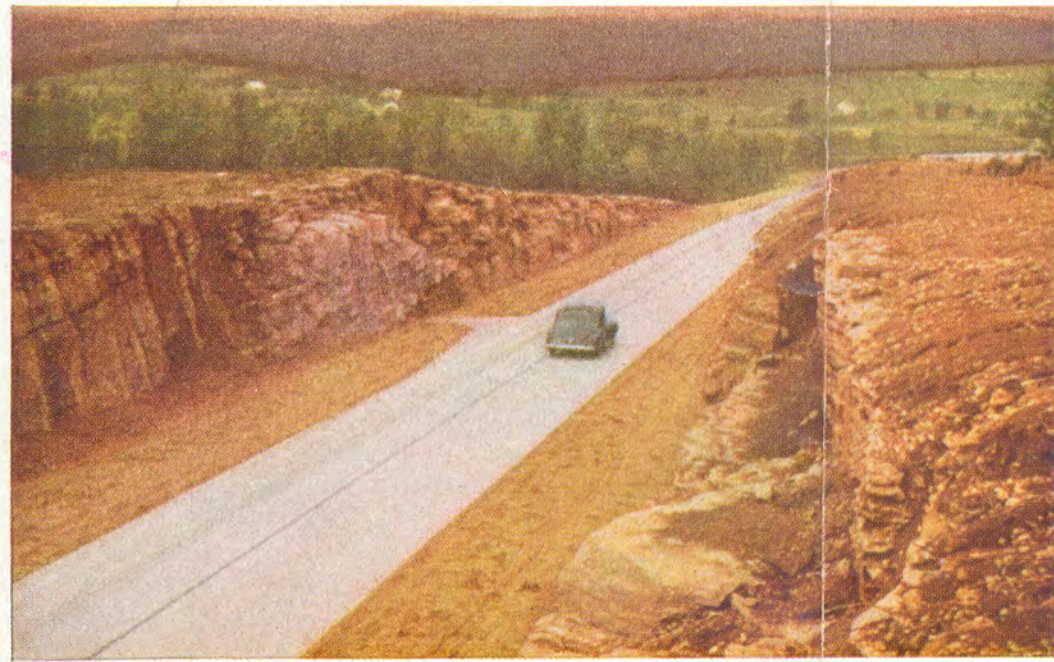
Roaring River State Park—Trout Fishing—One of the playgrounds of the Ozarks as seen from Route 112.



Greater St. Louis Flower Show—A riot of color and rare beauty.



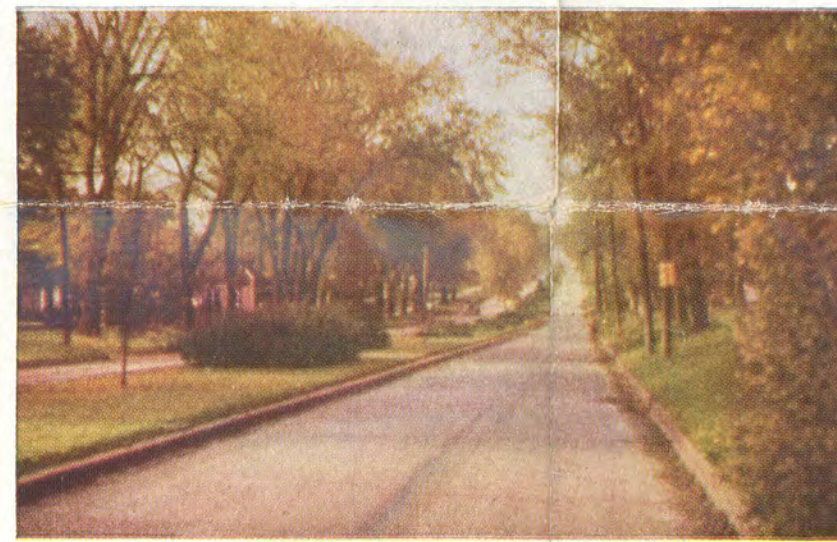
Ultra-modern continuous tied arch bridge over Meramec River on Route 21—One of the few of its kind in the world.




Modern Highway 25—Passing through historic Ste. Genevieve, Missouri's first permanent settlement, founded in 1732.



Missouri's Agricultural Show Window—Entrance to State Fair—Sedalia.



U. S. Route 36 in Brookfield—Missouri's first divided lane highway.


EXECUTIVE OFFICE
STATE OF MISSOURI
JEFFERSON CITY

FORREST C. DONNELL
GOVERNOR

TO THE POSSESSOR OF THIS MAP:

The traveler who journeys within the boundaries of Missouri discovers diversified natural beauties, bountiful resources and extensive products of industry. In scenery of fields, streams, lakes, springs, rivers, forests, caves, parks and mountains Missouri compares favorably with the other commonwealths of the nation. Picturesque villages are scattered throughout the State.

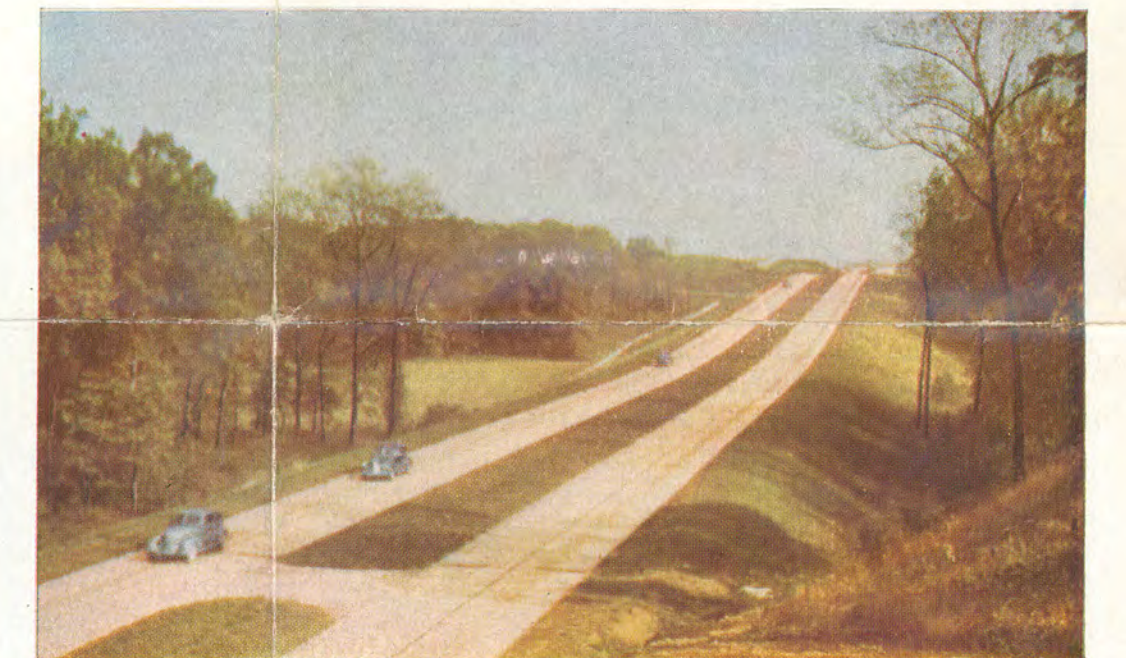
The area of Missouri exceeds that of England and Wales by over ten thousand square miles. The wealth in agriculture, mines and manufactures of Missouri is of vast proportions. We possess well kept farms, skillfully operated mines, busy towns and thriving cities. Great educational institutions are located within all parts of our commonwealth. Libraries and art galleries contribute to the cultural attainments of Missourians. Music finds eloquent expression among our people young and old. More important, however, than the area and wealth of our State and even the educational and cultural attainments of our citizens are their ideals, principles, patriotism and spiritual development.

To every Missourian who reads these lines, a cordial greeting is hereby extended. To each other reader this message not only conveys such a greeting but, in addition, expresses the hope that he or she may, by visiting Missouri, enjoy our noble State in which we, her citizens, have profound pride.

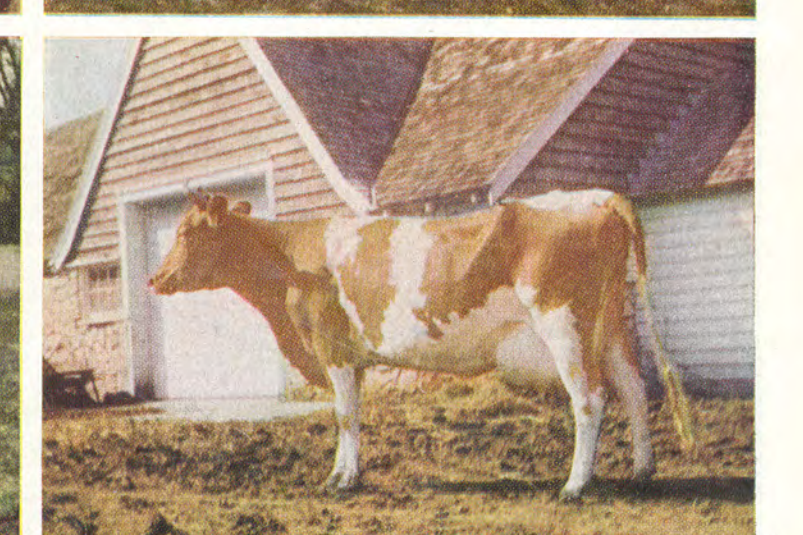
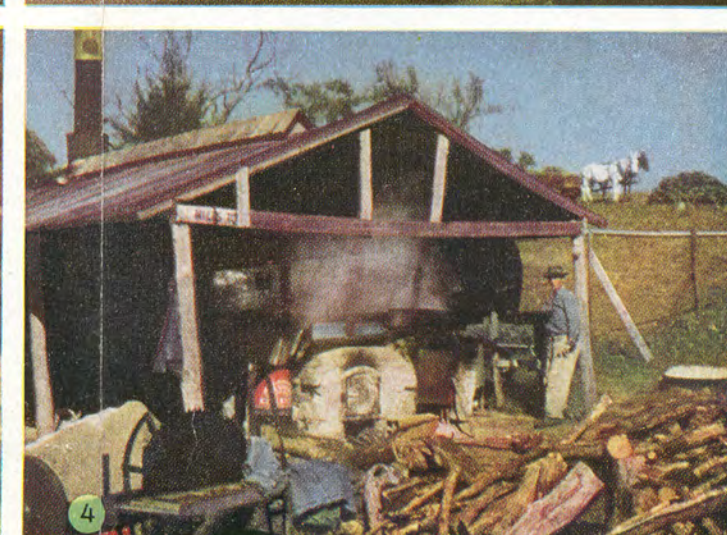
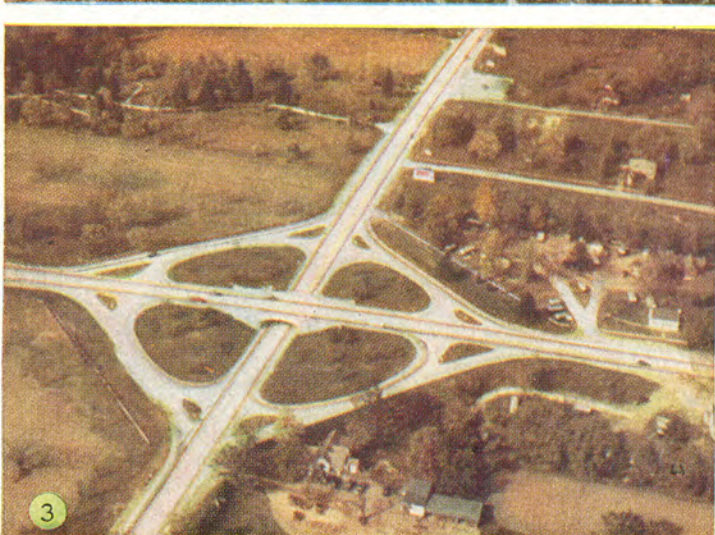
Forrest C. Donnell
Governor of Missouri.



U. S. Route 71 in Maryville—Pulsing artery of Nodaway County.



U. S. Routes 40 and 61—the Gateway to the West—St. Louis County—One of Missouri's safe divided highways.



1. Azaleas in bloom—Wild beauties of the Ozarks. 2. Old Tavern in Arrow Rock State Park—In continuous operation since 1830—A hostelry serving early famous travelers over the Sante Fe Trail. 3. Air view of one of the modern highway intersections—St. Louis County. 4. Sorghum-Molasses—Famous Missouri product in the making.

(Above) Constructing new U. S. Route 63—A ribbon of concrete reaching across Texas County. (Below) Krug Park—St. Joseph—A natural beauty spot for outdoor recreation.

(Above) Bagnell Dam—Beautiful Lake of the Ozarks offers varied vacation facilities. (Below) Kansas City—The Heart of America—Unique Union Station framed by a fascinating skyline.

Typical Missouri farm scenes—Missouri ranks among the first in agricultural products and animal husbandry.