

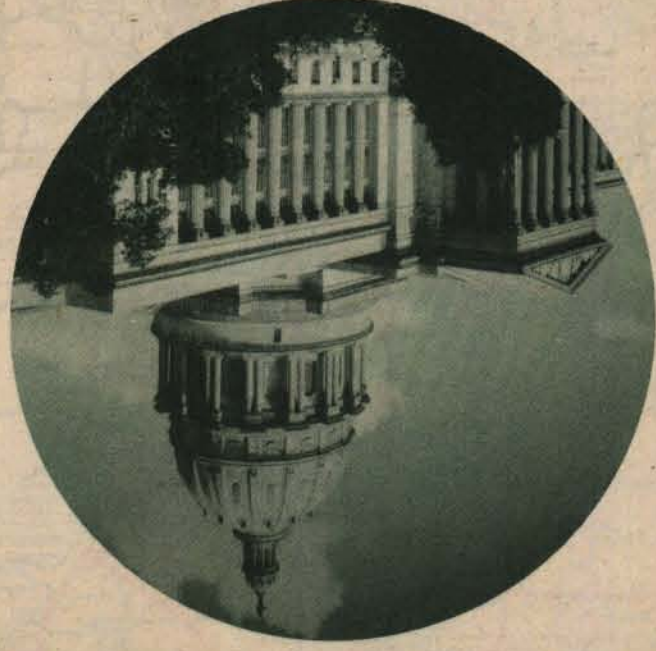
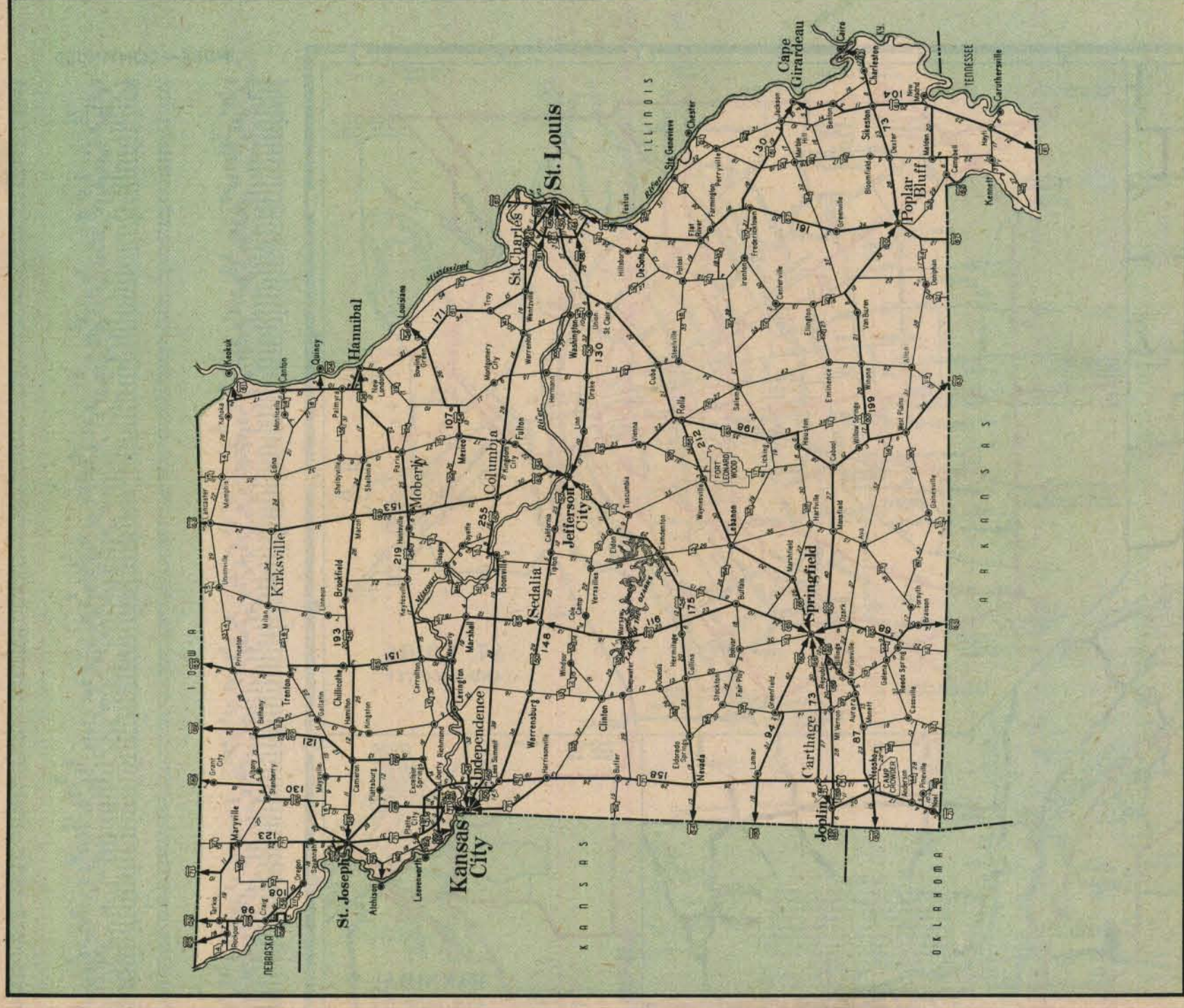
# Missouri Missouri

1945-46  
HIGHWAY MAP HIGHWAY MAP

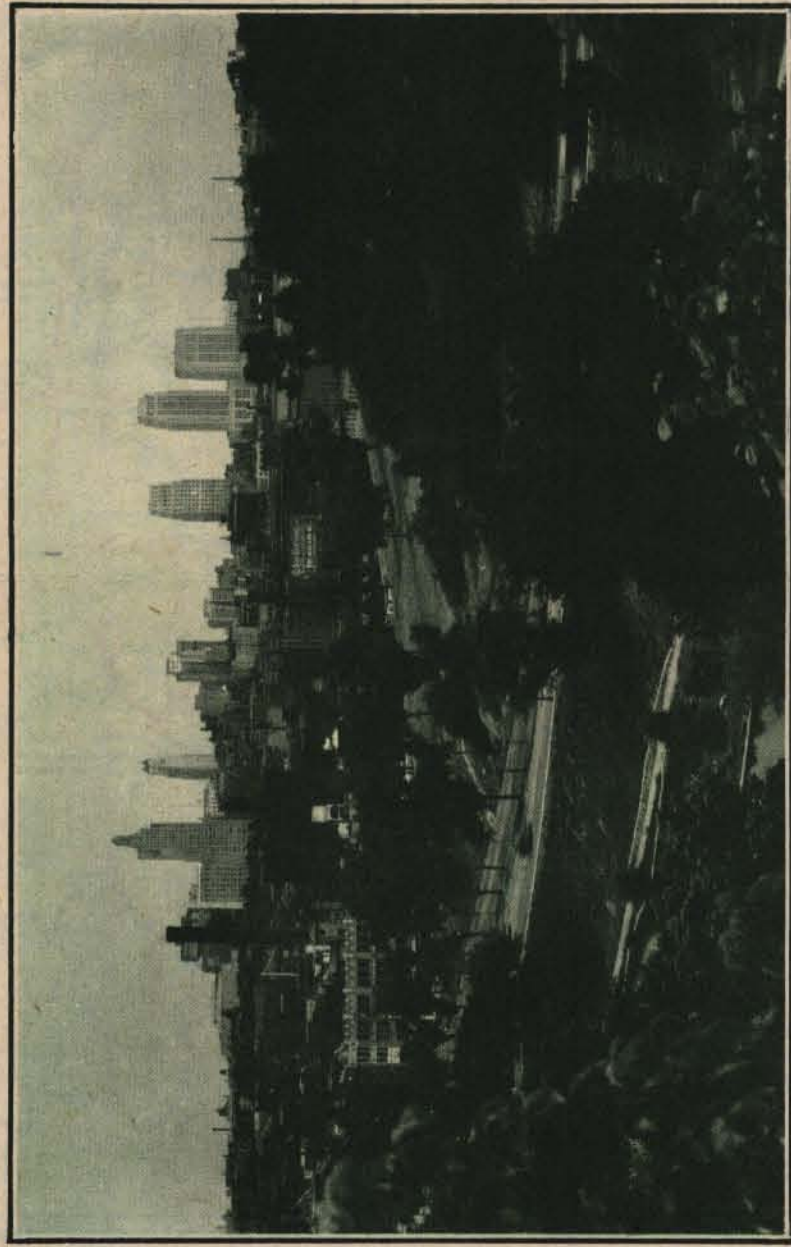


MISSOURI STATE HIGHWAY COMMISSION  
JEFFERSON CITY

MISSOURI STATE HIGHWAY COMMISSION  
JEFFERSON CITY



STATE CAPITOL, JEFFERSON CITY



PENN VALLEY PARK, KANSAS CITY

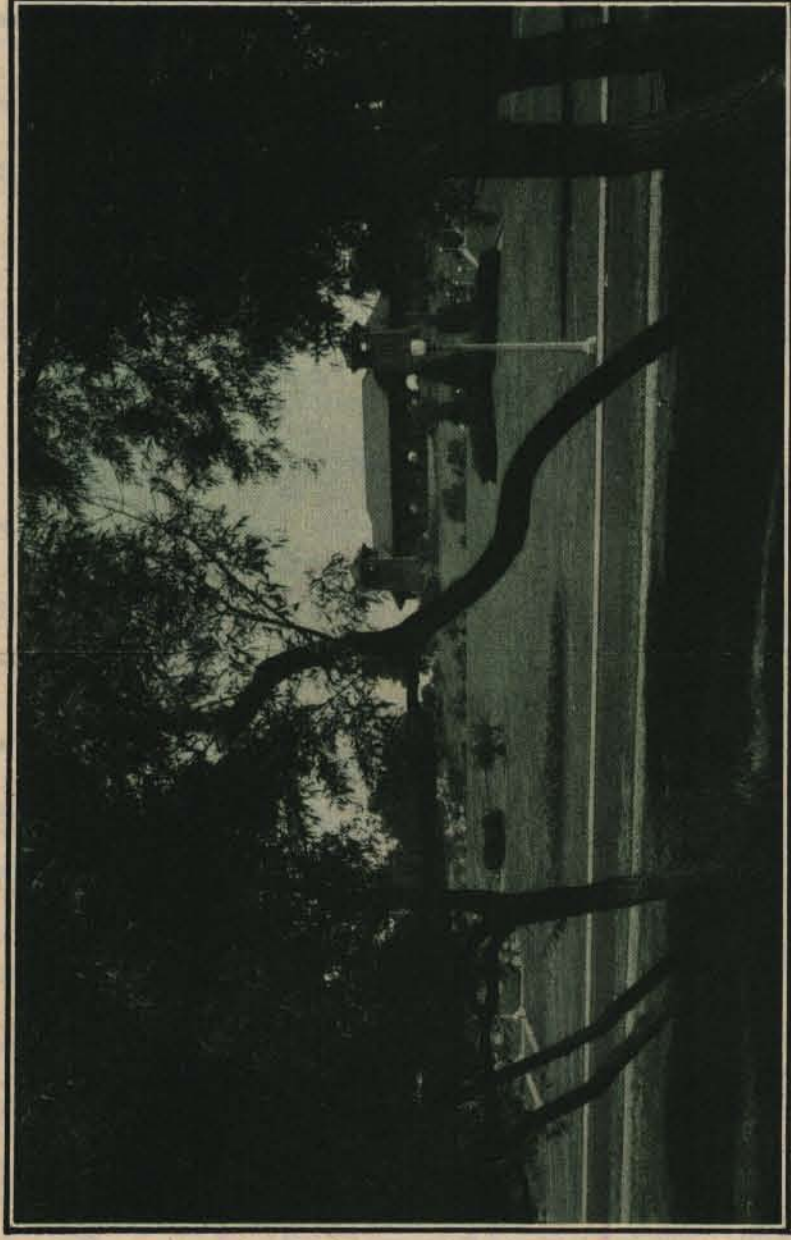
EXECUTIVE OFFICE  
JEFFERSON CITY

TO THE TRAVELER ON MISSOURI'S HIGHWAYS:  
Missourians who view the scenes of the state as they travel are reminded of the richness and variety of scenic wonders and of our great natural resources. In the parks, monuments, and public buildings, we hope, to see more of Missouri and to become better acquainted with our friendly people.

To such visitors, on behalf of all Missourians, I extend a most cordial welcome. As you travel on our highways, lakes and streams and rivers, or through the famous Ozarks, note the infinite beauties of our state. As you visit our great cities, you will find in their driving boulevards and public monuments, their galleries and museums, the evidence of our people. Our centers of learning, to the student of the world, will attest to the culture of a great and sovereign state.

Your attention is invited to those things with the hope that your visit will be a most profitable one. We invite you to stay with us as long as you can. And when you leave our state, we hope you will remember Missouri, and come to see us again.

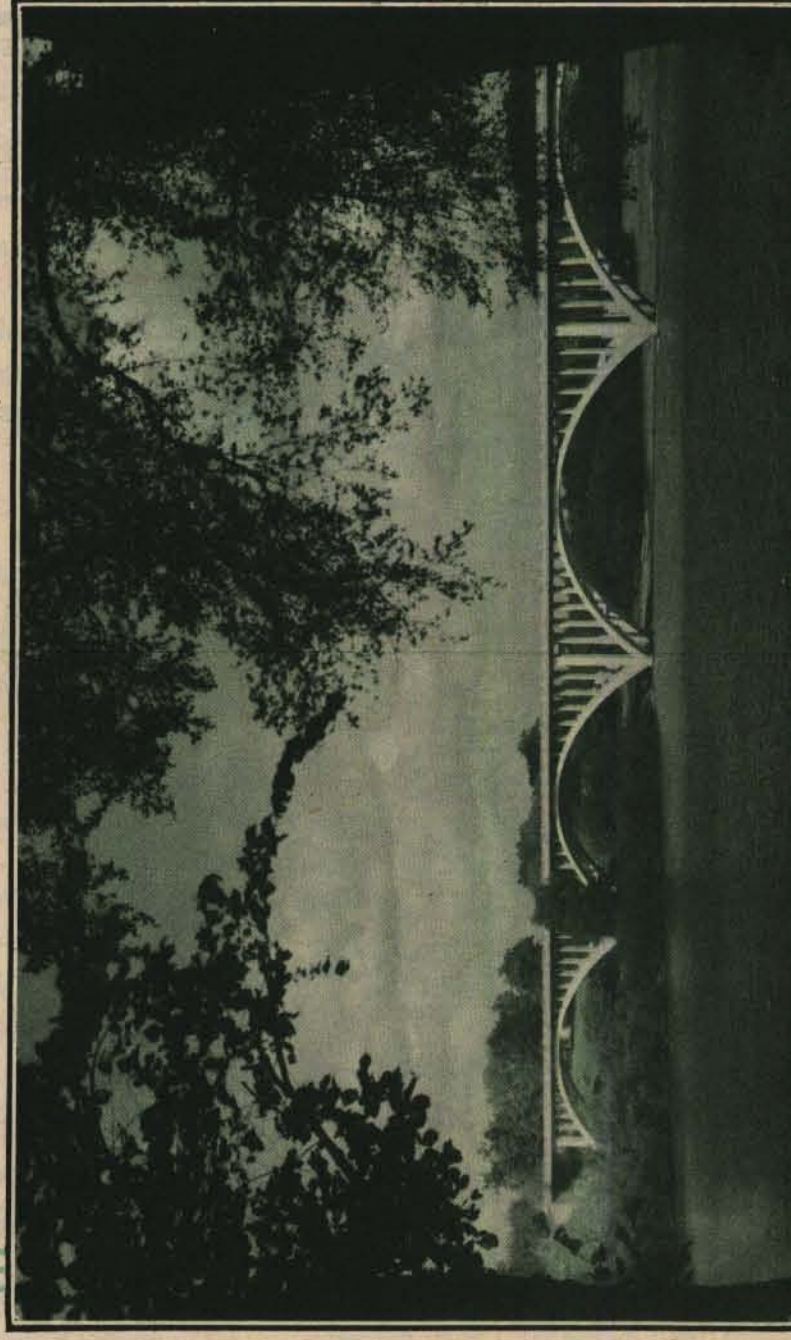
*Phil M. Donnelly*  
Governor of Missouri.



FOREST PARK, ST. LOUIS



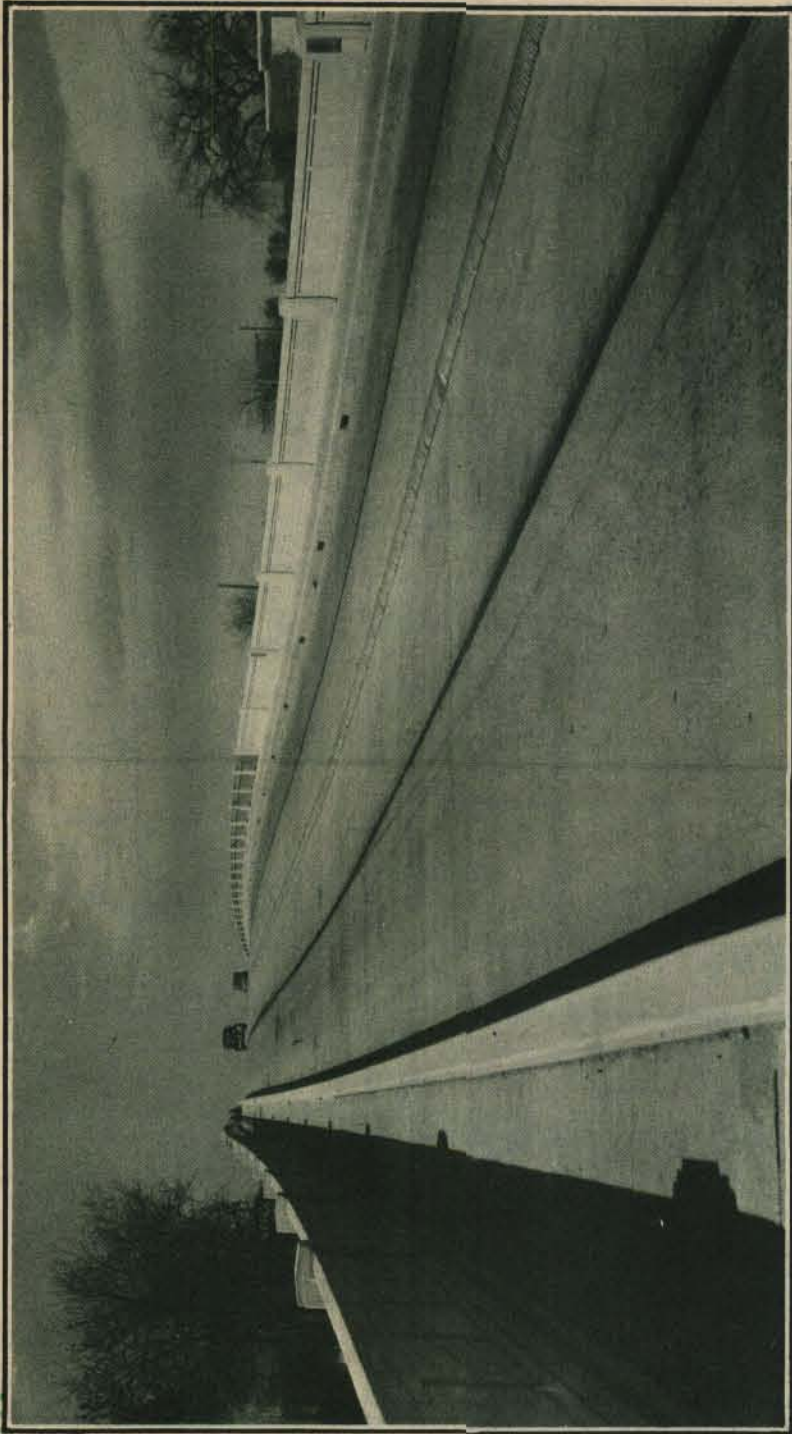
LAKE OF THE OZARKS, U. S. Route 54



LAKE TANEYCOMO, U. S. Route 65

MISSOURI  
STATE HIGHWAY COMMISSION

<p>PAUL C. JONES, Chairman Kearney</p> <p>JOHN J. POWERS, Member St. Louis</p> <p>EDWARD L. CLARK, Ex-Officio Rolla</p> <p>C. W. BROWN, Chief Engineer</p>	<p>E. N. MEADOR, Vice-Chairman Cassville</p> <p>WILLIAM A. SNEER, Member Albany</p> <p>RAYMOND G. BARNETT, Chief Counsel</p> <p>JOHN H. ACUTT, Secretary</p>
--	--



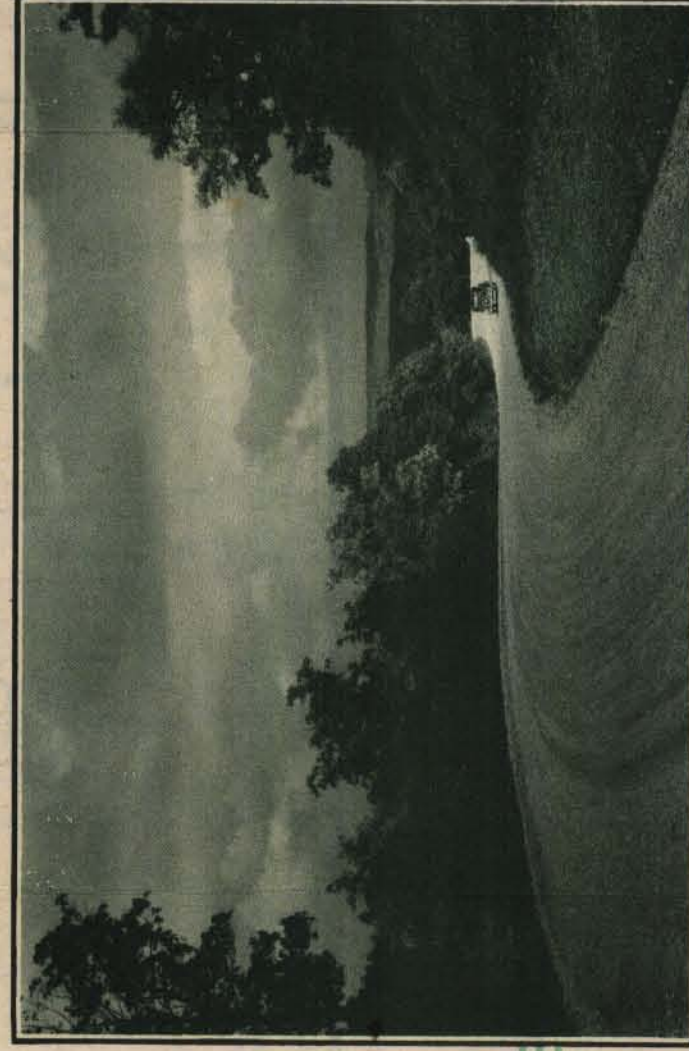
U. S. ROUTE 65, SOUTH MISSOURI



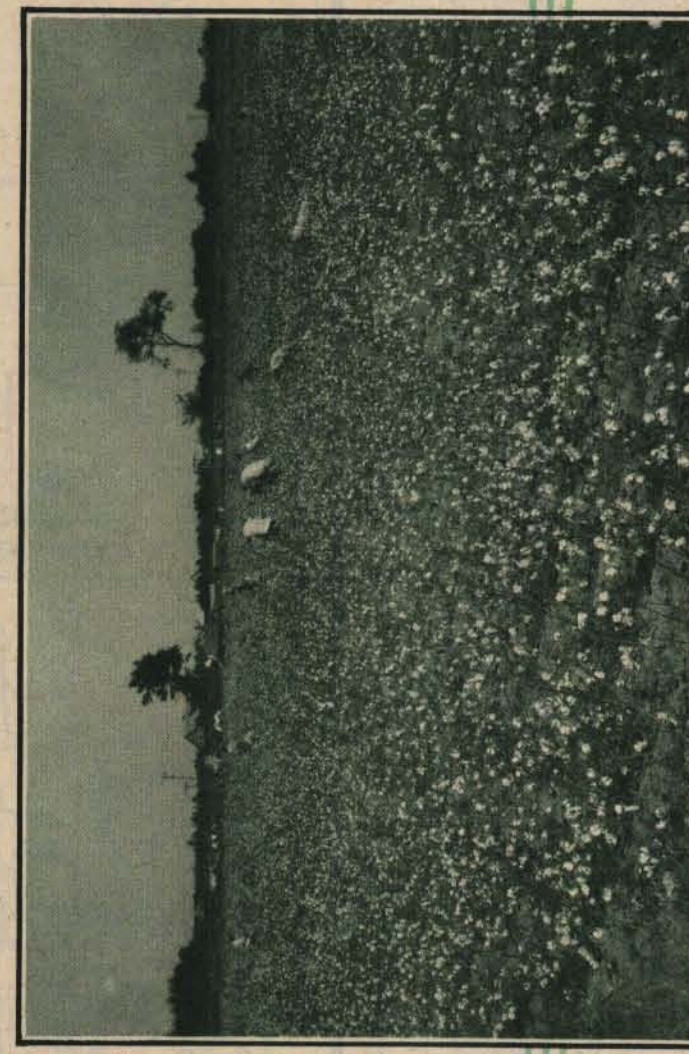
U. S. ROUTE 71, NORTHWEST MISSOURI



U. S. ROUTE 166, SOUTHWEST MISSOURI



STATE ROUTE 14, SOUTH CENTRAL MISSOURI



U. S. ROUTE 61, NORTHEAST MISSOURI

STATE ROUTE 95, SOUTHEAST MISSOURI