

Missouri Department of Transportation

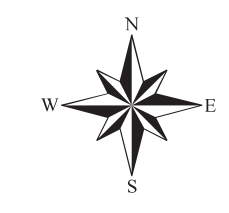
# 2004

## District 6 Traffic Volume Map

Prepared by:  
Missouri Department of Transportation  
Transportation Planning  
2217 St. Mary's Blvd.  
Jefferson City, MO 65109  
Phone (573) 526-8058  
Fax (573) 526-8052

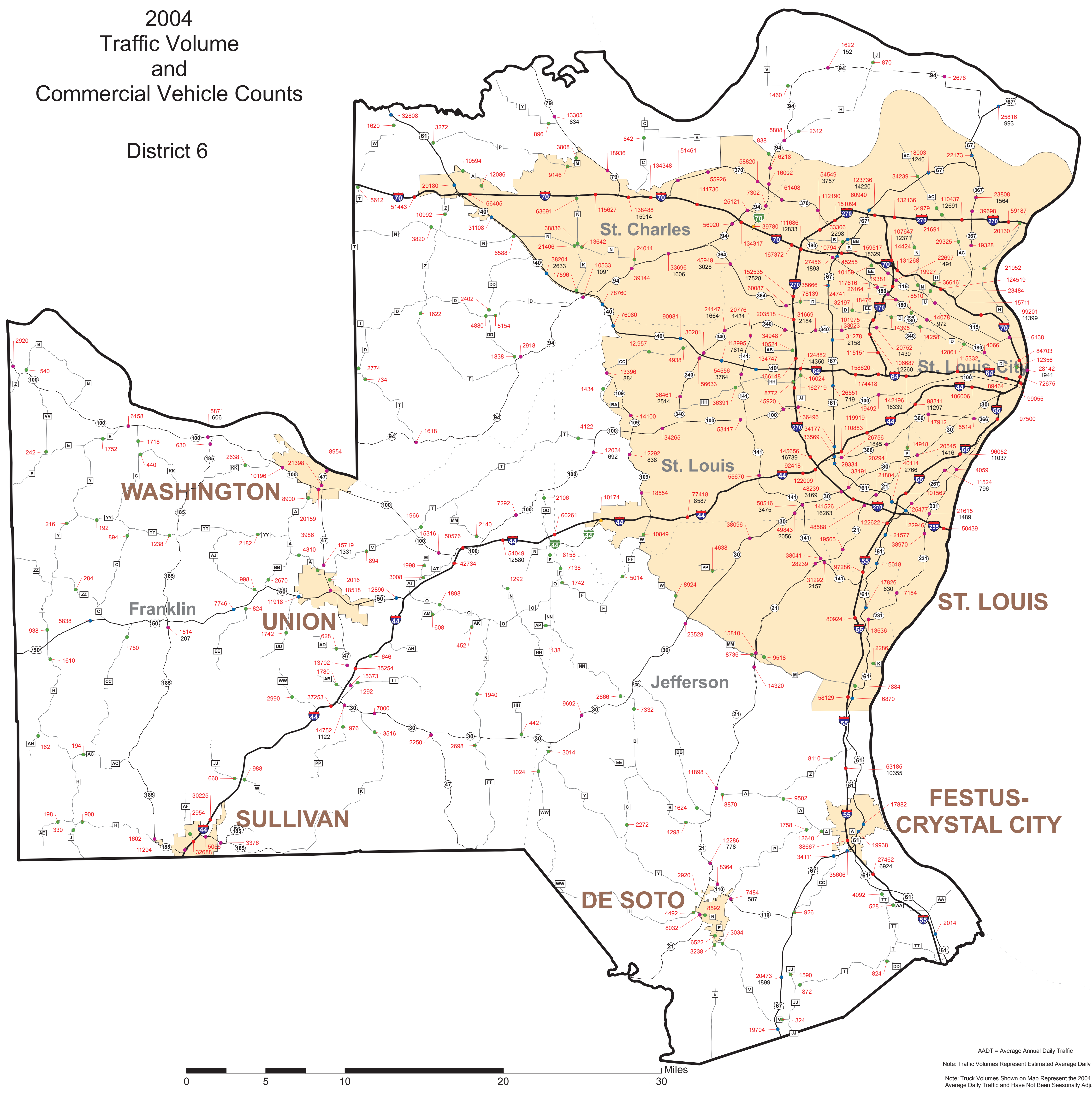
[www.modot.org](http://www.modot.org)

This report contains information that is protected from disclosure by federal law, 25 USC Section 406 and the Missouri Open Records Law (Sunshine Act), Section 610.021, RSMo. Please review MoDOT's policy and procedure manual on the Sunshine Act before releasing any of the information contained herein.



# 2004 Traffic Volume and Commercial Vehicle Counts

## District 6



**Legend**

- Interstate
- US Routes
- MO Routes
- Business Routes and Loops
- Lettered, Spur, and Alternate Routes

23462 Traffic Volume (AADT)  
1673 Truck Volume

Urban Areas  
Counties



AADT = Average Annual Daily Traffic  
Note: Traffic Volumes Represent Estimated Average Daily Traffic  
Note: Truck Volumes Shown on Map Represent the 2004 Average Daily Traffic and Have Not Been Seasonally Adjusted.