



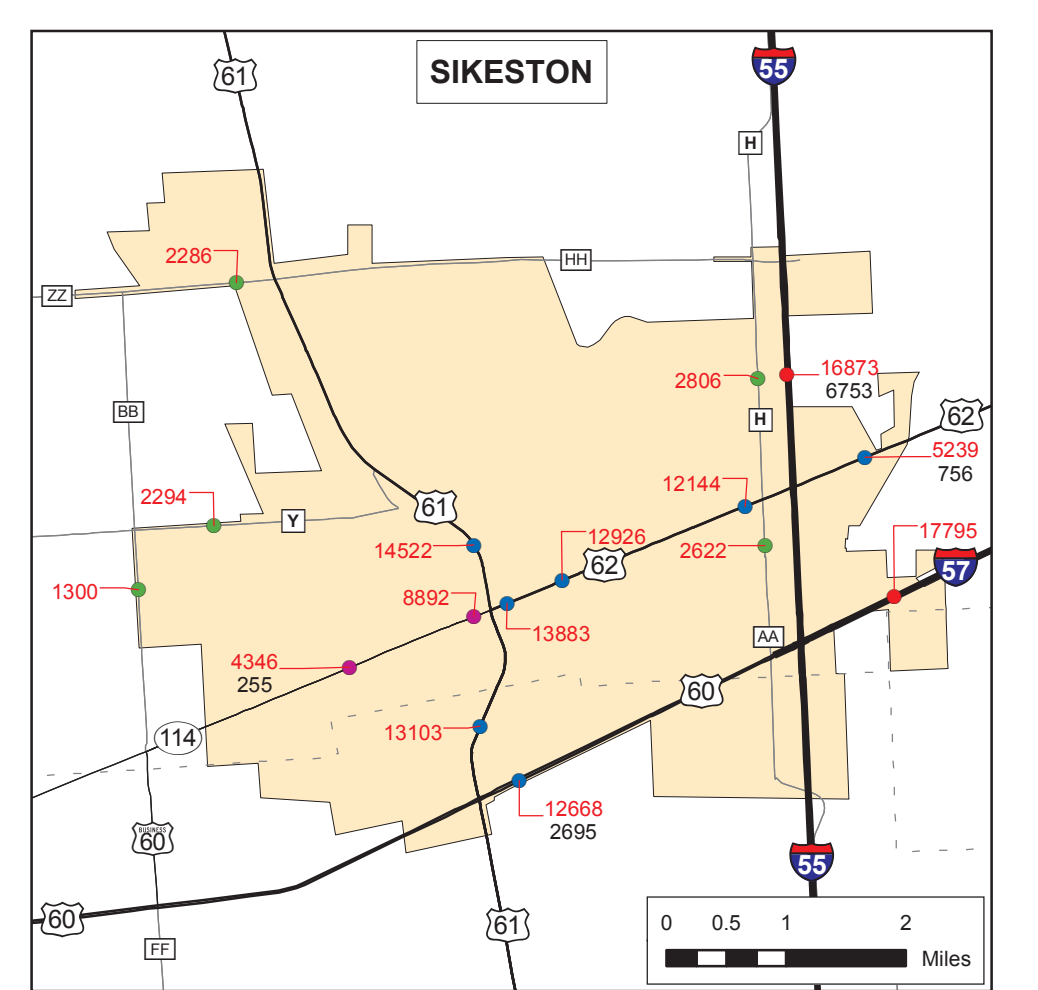
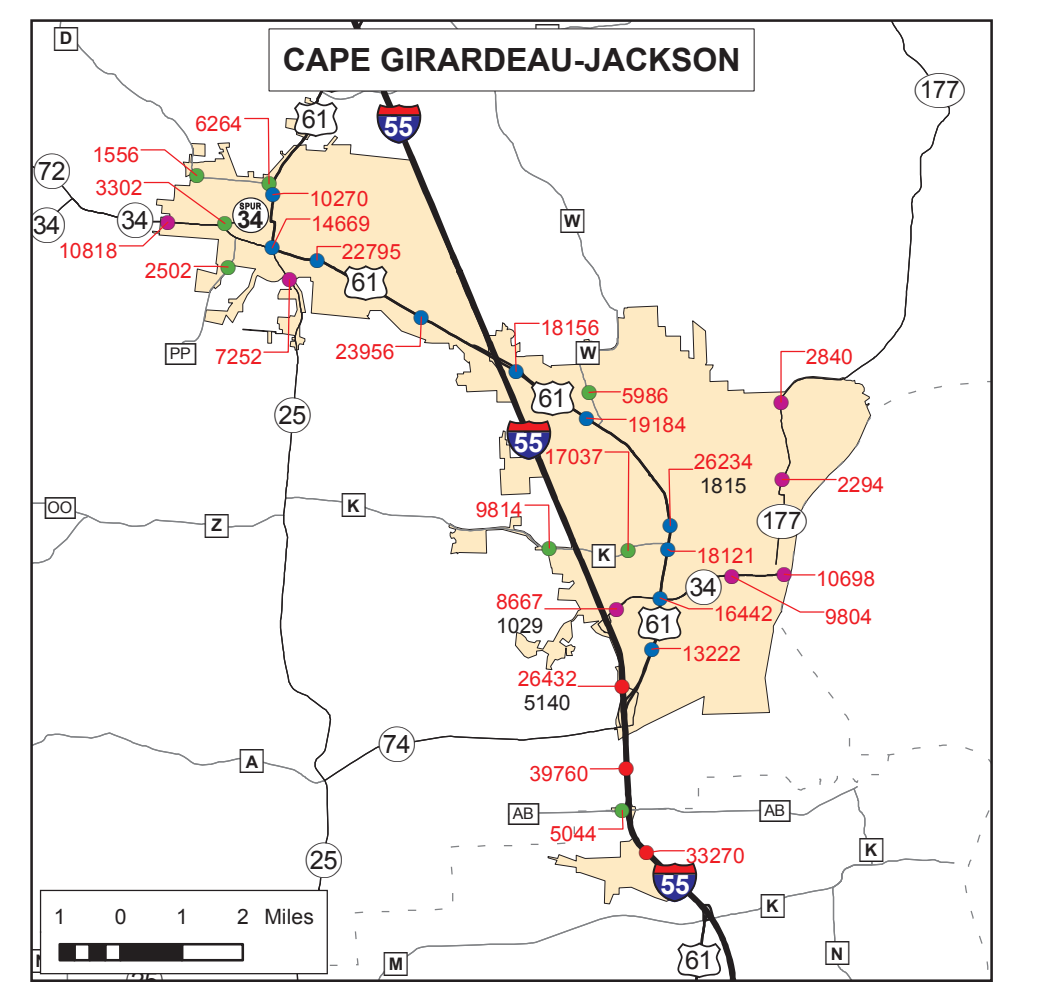
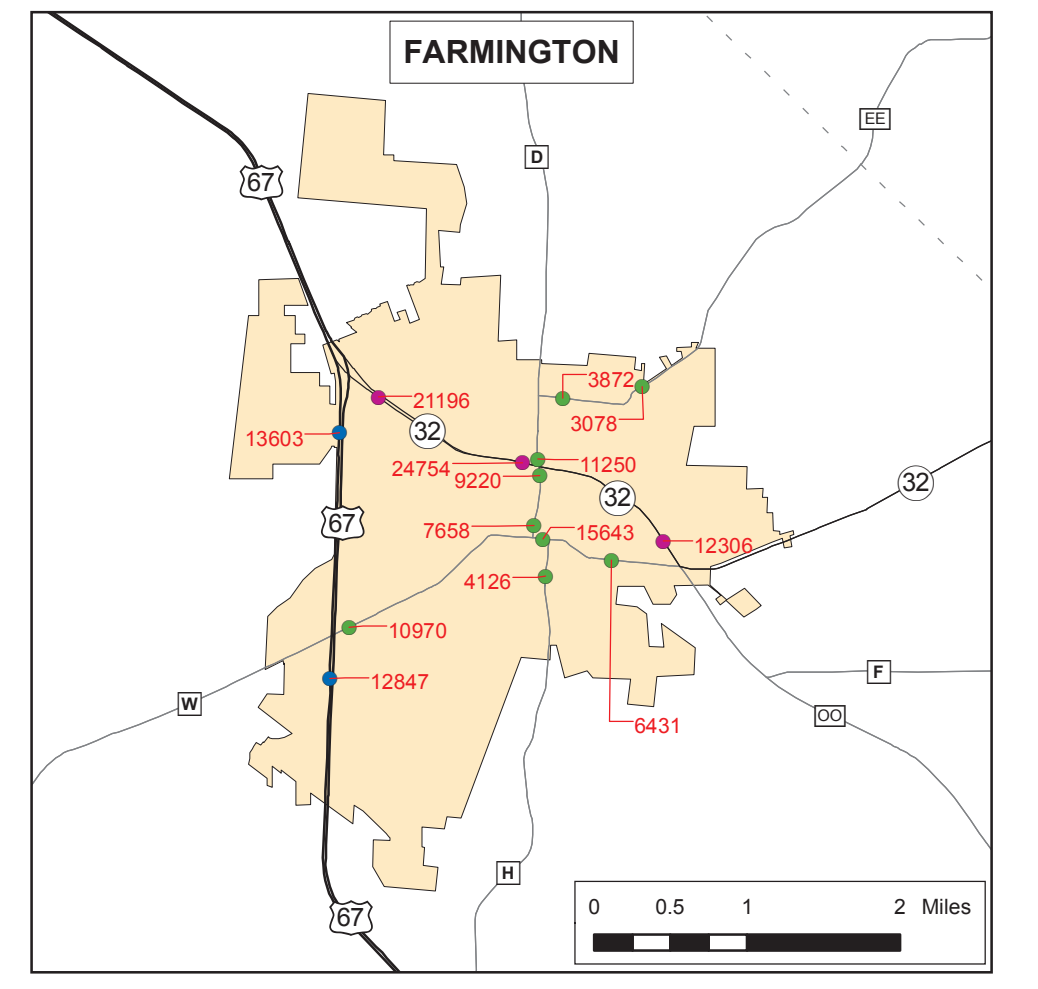
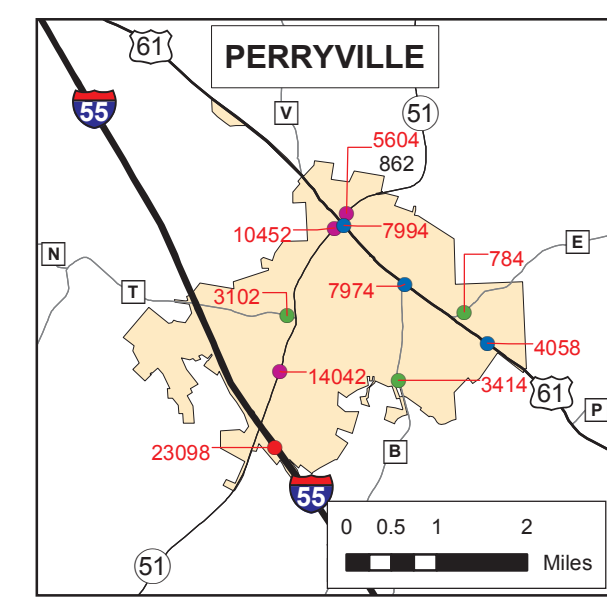
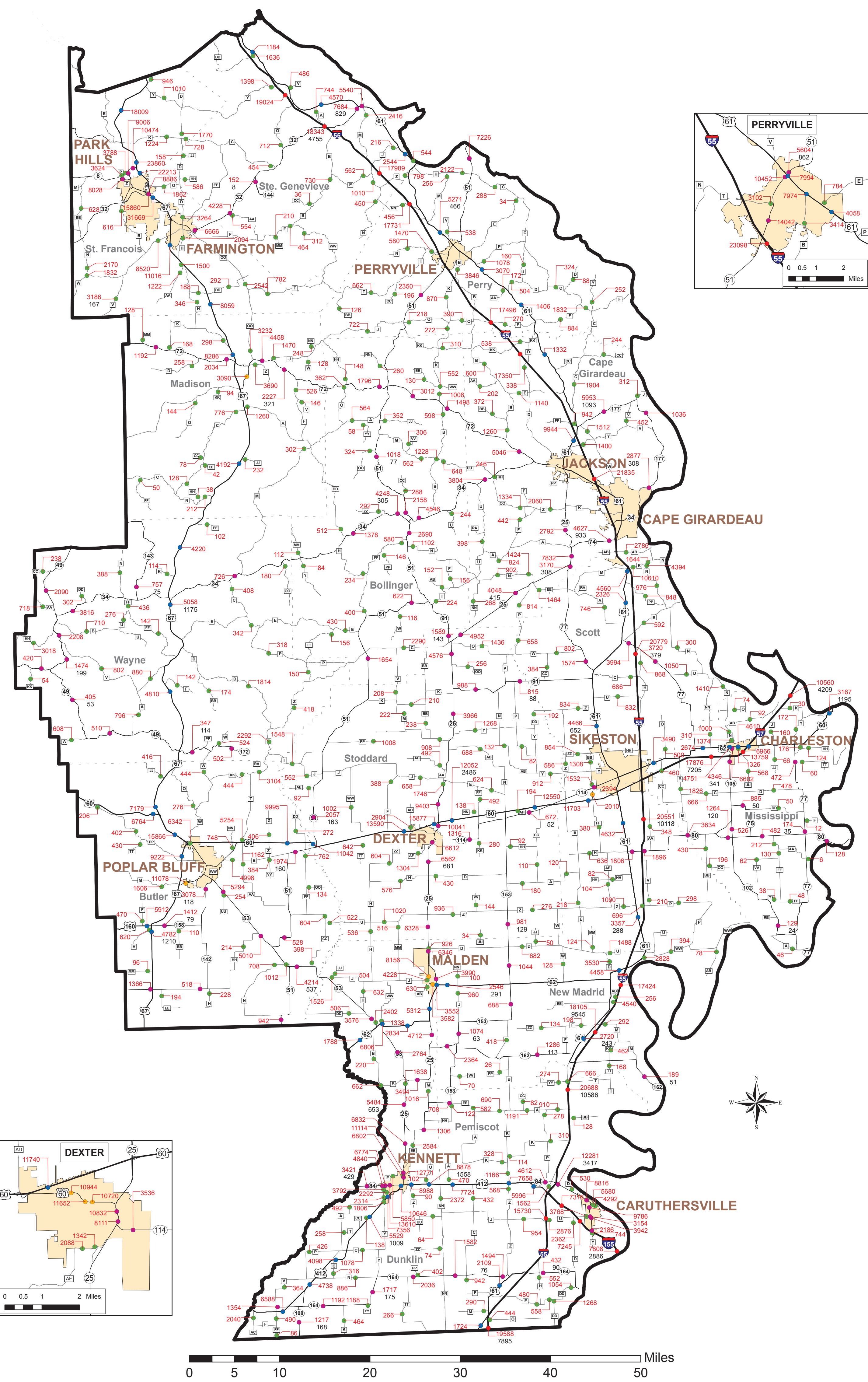
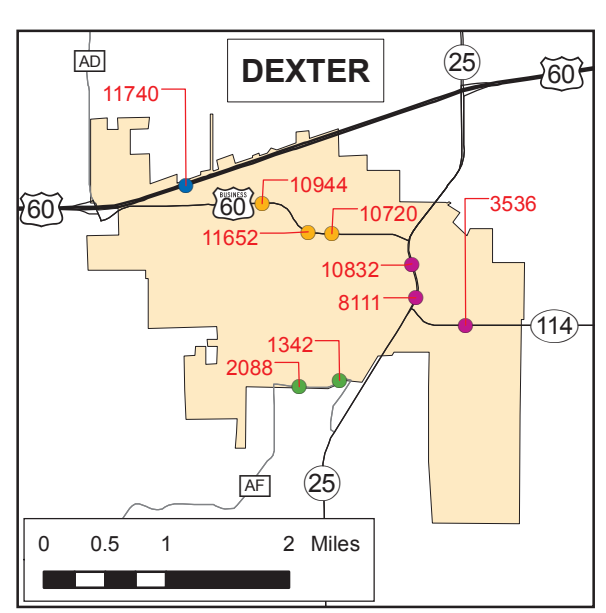
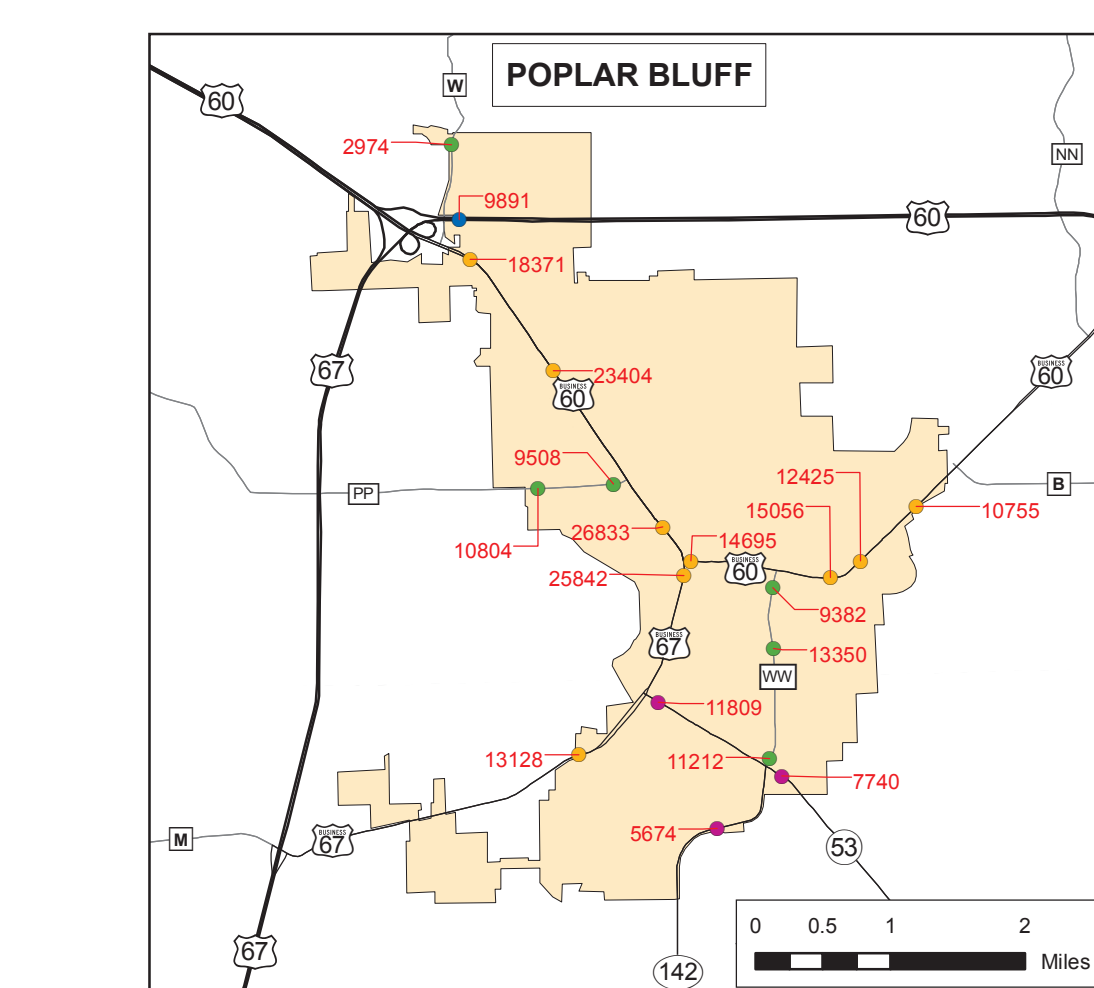
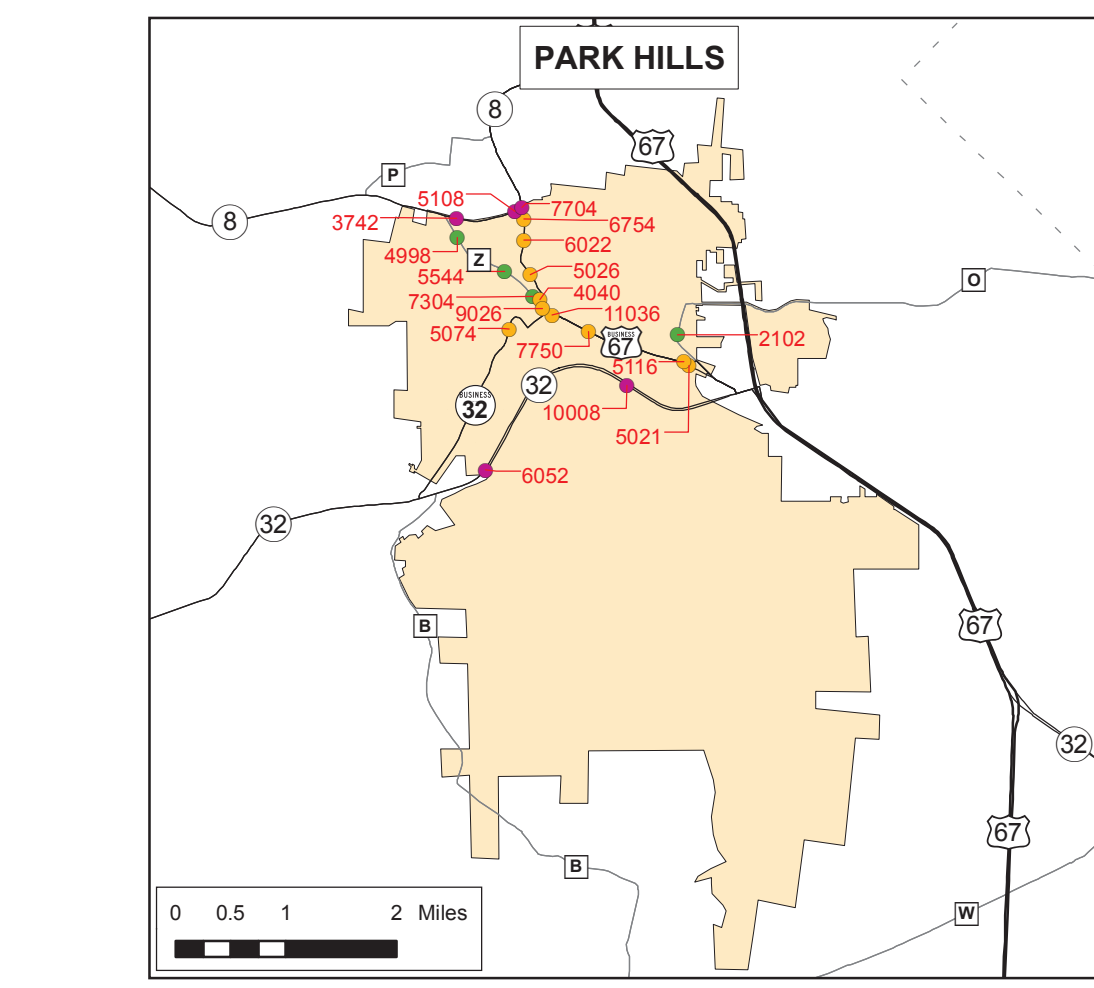
# 2005 District 10 Traffic Volume Map

Prepared by:  
 Missouri Department of Transportation  
 Transportation Planning  
 2217 St. Mary's Blvd.  
 Jefferson City, MO 65109  
 Phone (573) 526-8058  
 Fax (573) 526-8052  
 www.modot.org

This report contains information that is protected from disclosure by federal law, 25 USC Section 438 and the Missouri Open Records Law (Sunshine Act), Section 610.021 RSMo. Please review MoDOT's policy and procedure manual on the Sunshine Act before releasing any of the information contained herein.

# 2005 Traffic Volume and Commercial Vehicle Counts

## District 10

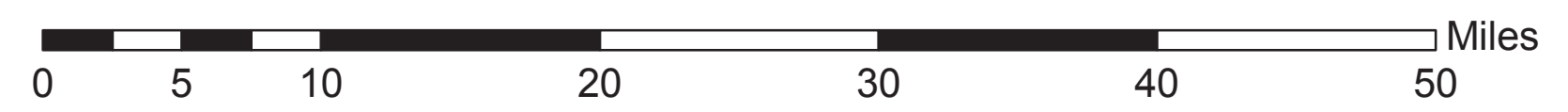


**Legend**

- Interstate
- US Routes
- MO Routes
- Business Routes and Loops
- Lettered, Spur, and Alternate Routes

23462 Traffic Volume (AADT)  
 1673 Truck Volume

Urban Areas  
 Counties



AADT = Average Annual Daily Traffic  
 Note: Traffic Volumes Represent Estimated Average Daily Traffic  
 Note: Truck Volumes Shown on Map Represent the 2005 Average Daily Traffic and Have Not Been Seasonally Adjusted.