

Missouri Department of Transportation

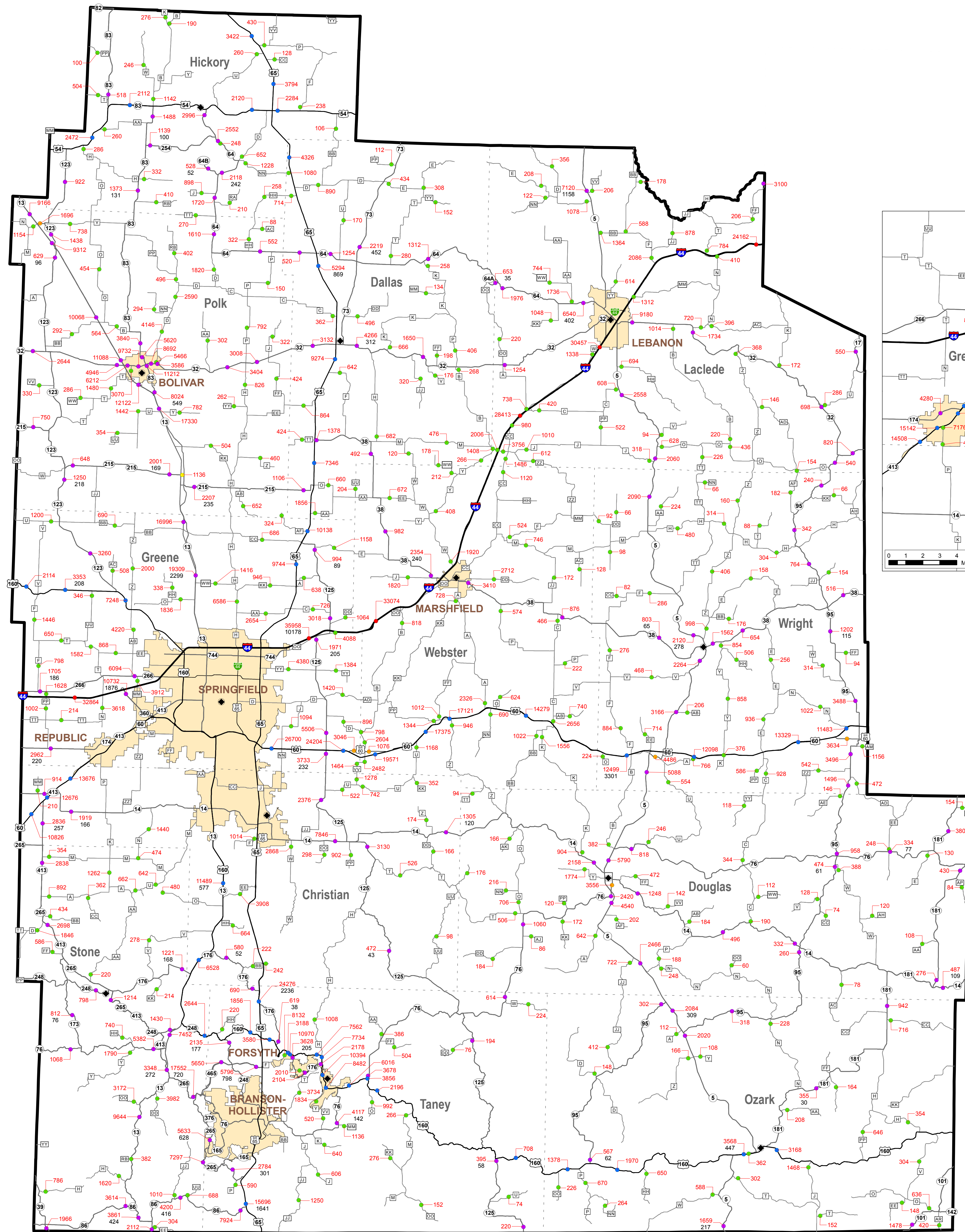
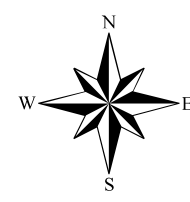
2007

District 8 Traffic Volume Map

Prepared by:
Missouri Department of Transportation
Transportation Planning
2217 St. Mary's Blvd.
Jefferson City, MO 65109
Phone 1-888-ASK-MODOT
Fax (573) 526-8052

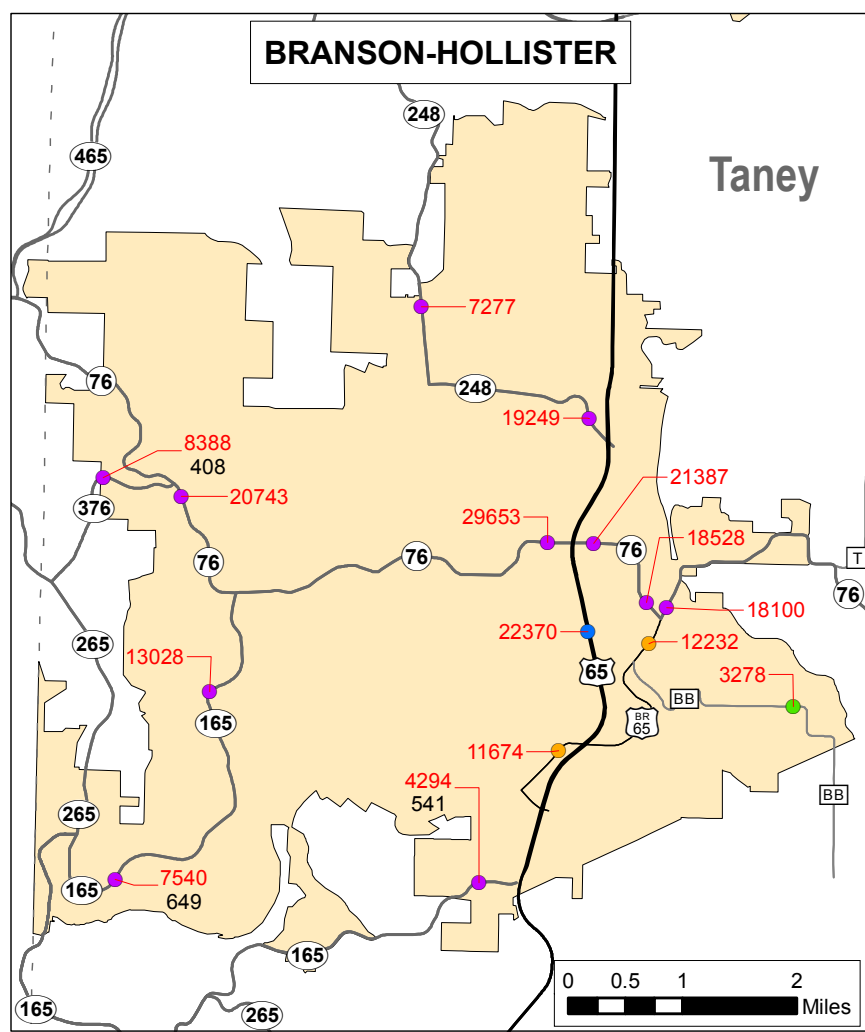
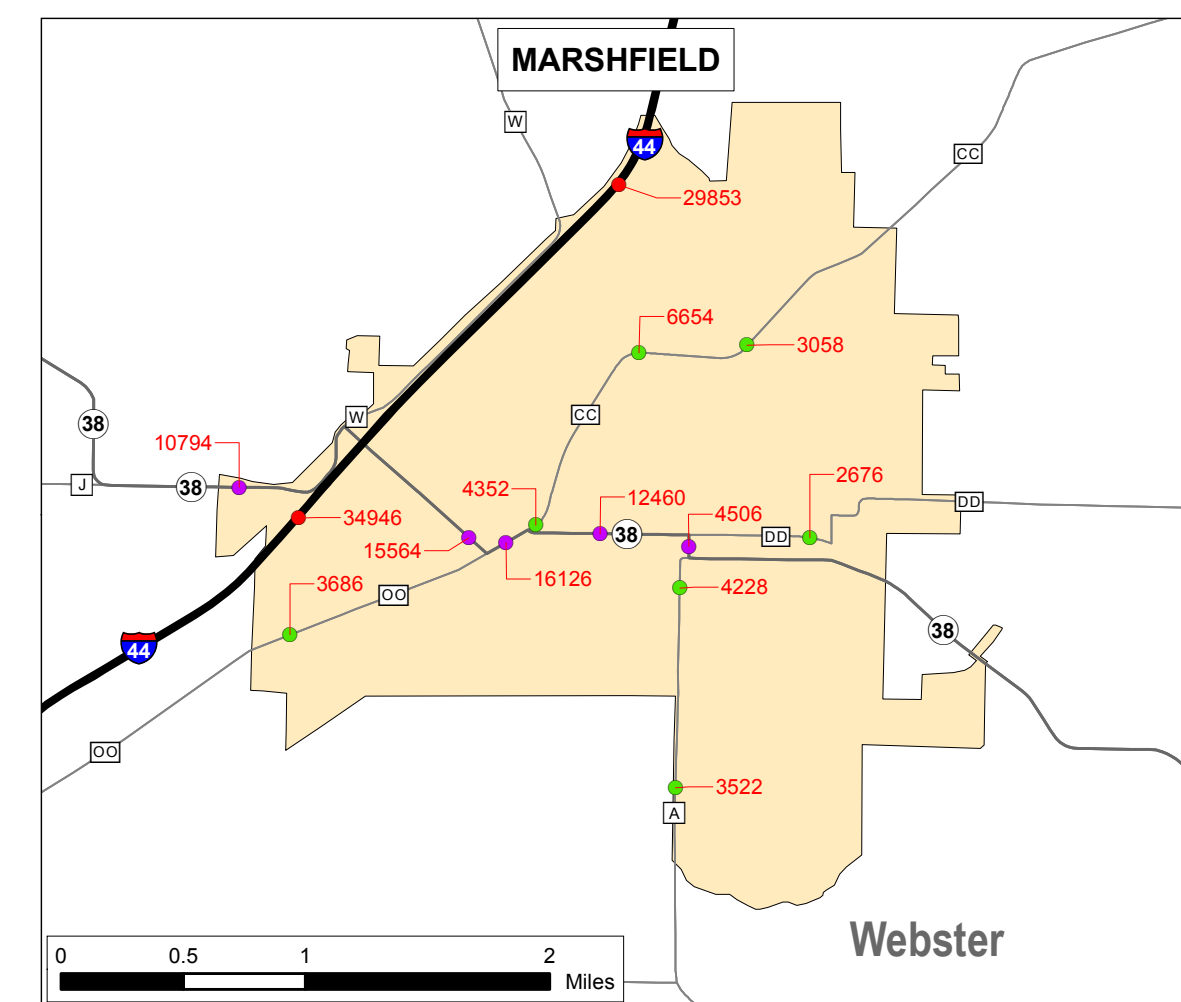
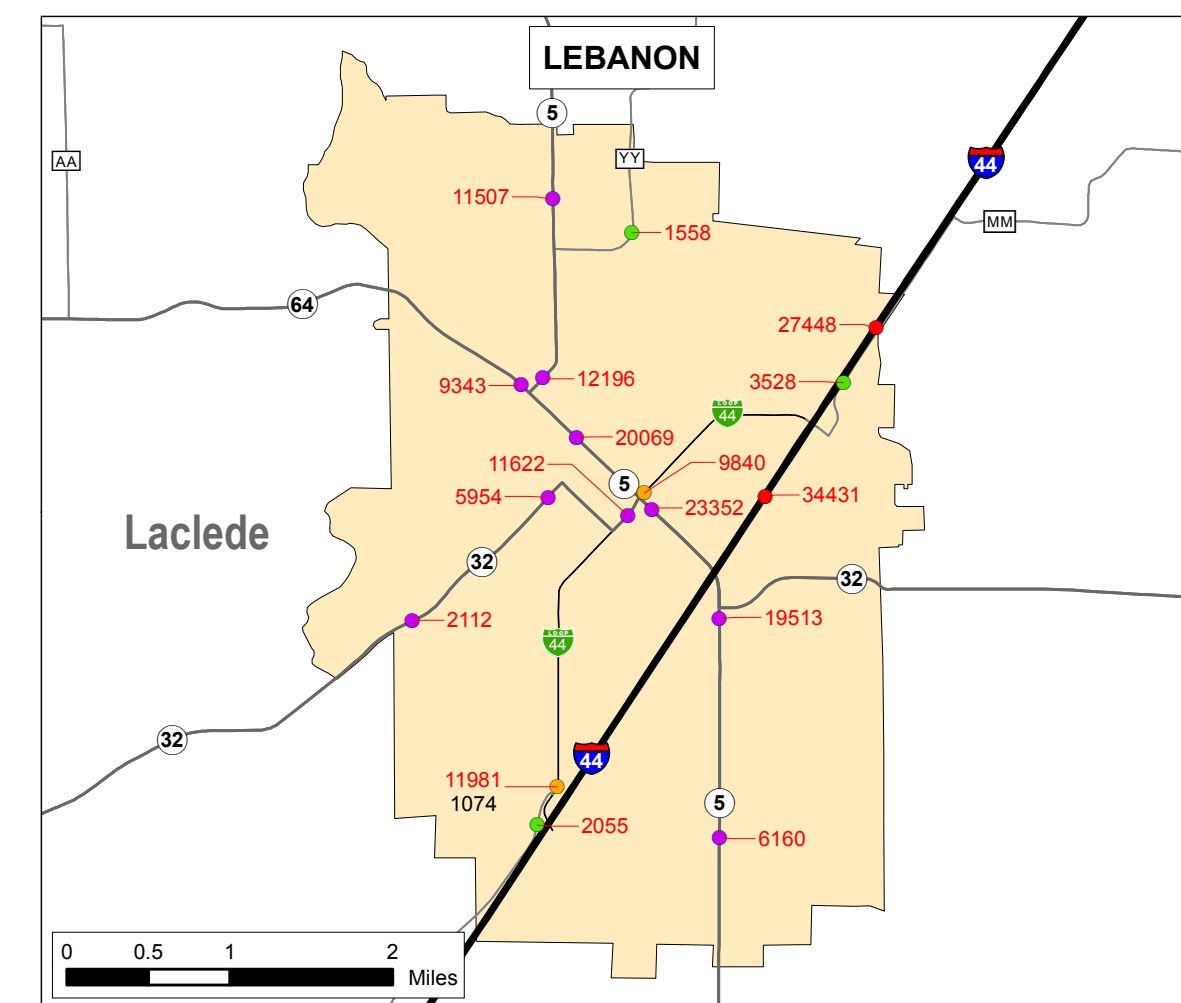
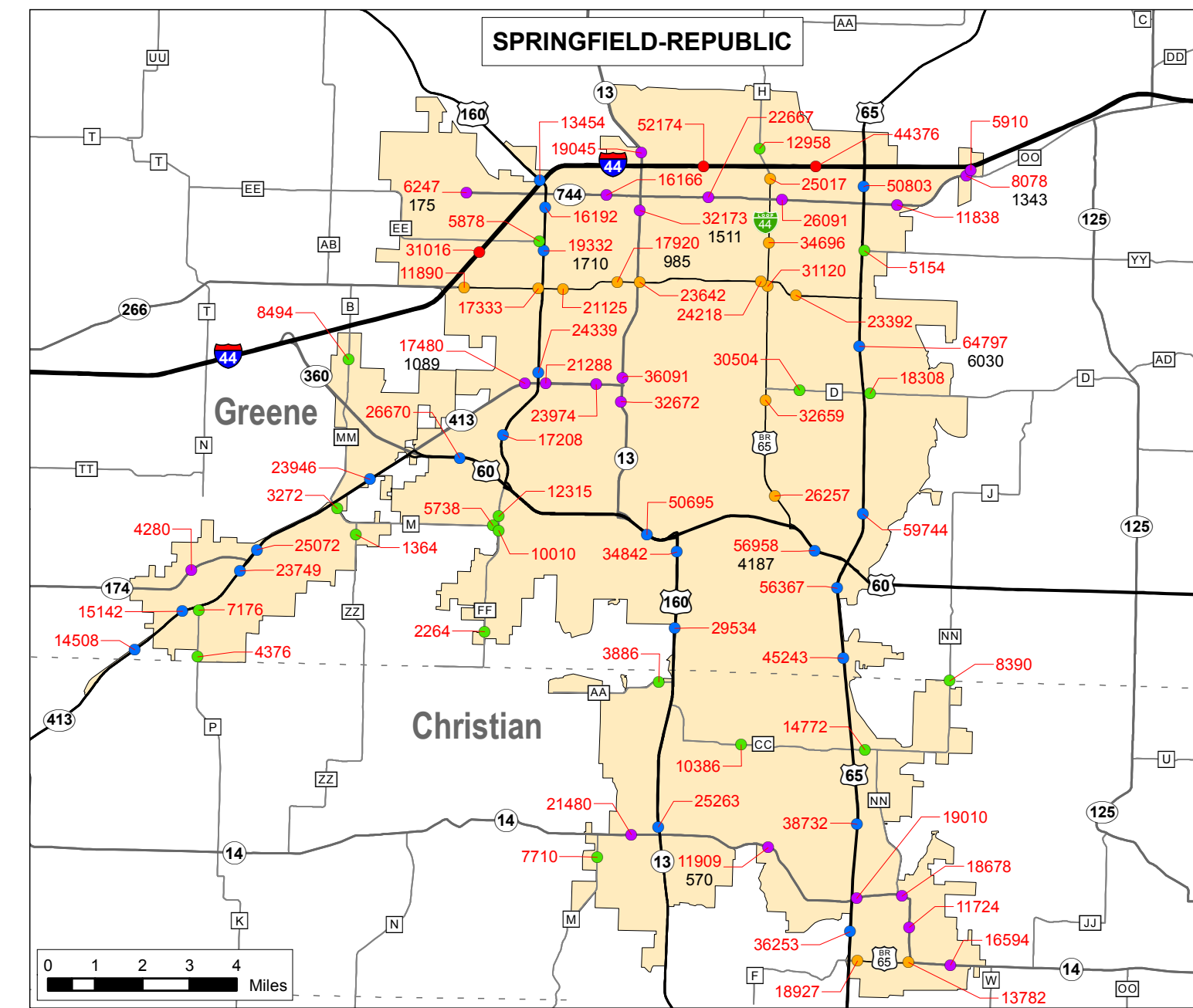
www.modot.org

This report contains information that is protected from disclosure by federal law, 23 USC Section 409 and the Missouri Open Records Law (Sunshine Act), Section 610.021 RSMo. Please review MoDOT's policy and procedure manual on the Sunshine Act before releasing any of the information contained herein.



2007 Traffic Volume and Commercial Vehicle Counts

District 8



Legend

- Interstate
- US Routes
- MO Routes
- Business Routes and Loops
- Lettered and Alternate Routes
- Spur Routes and Alternate Routes

23462 Traffic Volume (AADT)

1673 Truck Volume

County Seat

Urban Areas

Counties



AADT = Average Annual Daily Traffic
Note: Traffic Volumes Represent Estimated Average Daily Traffic
Note: Truck Volumes Shown on Map Represent the 2007 Average Daily Traffic and Have Not Been Seasonally Adjusted.