

Missouri Department of Transportation

2012

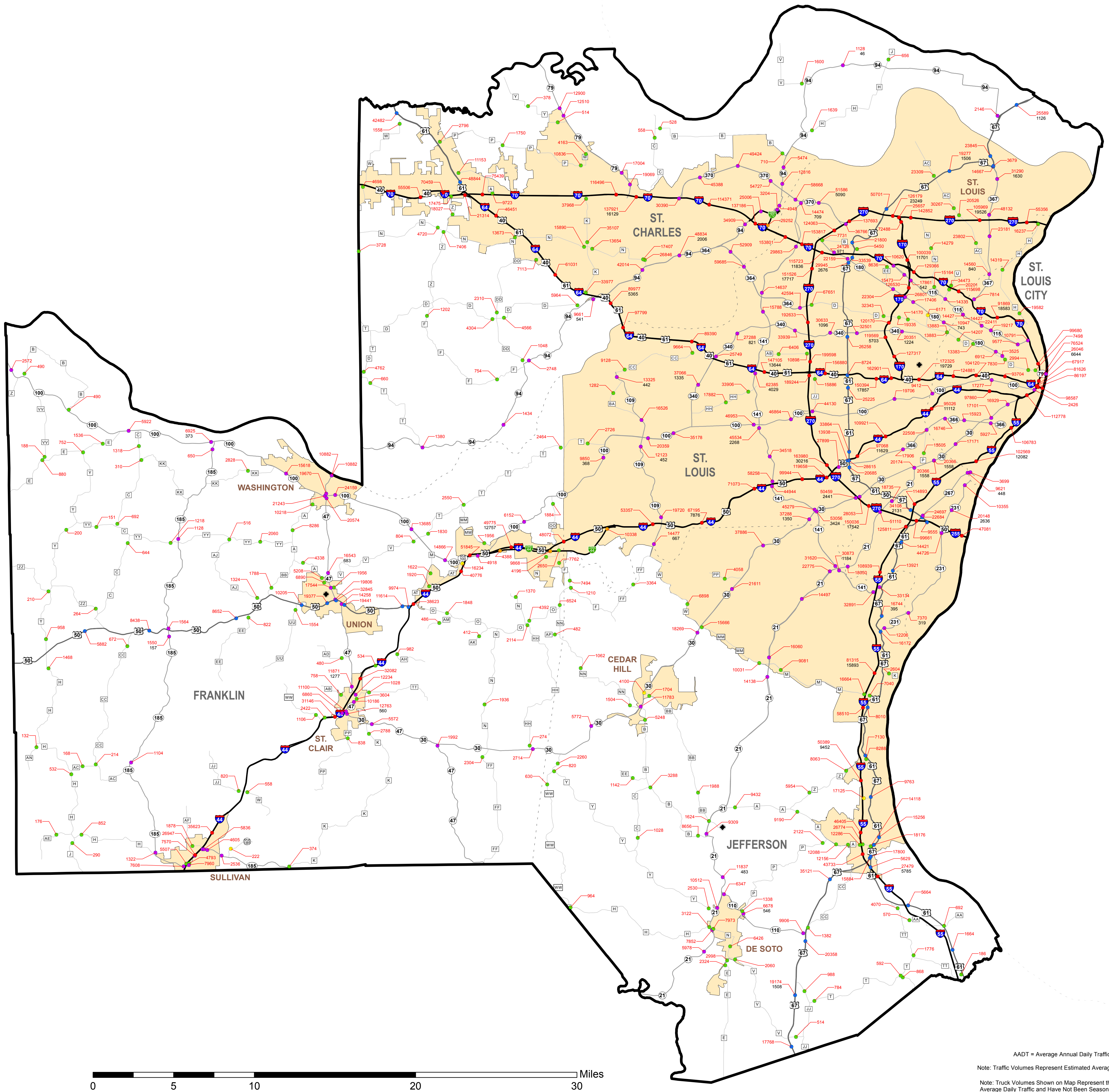
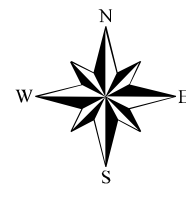
# St. Louis District Traffic Volume and Commercial Vehicle Count Map

Prepared by:

Missouri Department of Transportation  
Transportation Planning  
105 W. Capitol Ave.  
Jefferson City, MO 65102  
Phone 1-888-ASK-MODOT  
Fax (573) 526-8052

[www.modot.org](http://www.modot.org)

This report contains information that is protected from disclosure by federal law, 23 USC Section 409 and the Missouri Open Records Law (Sunshine Act) Section 610.021 RSMo. Please review MoDOT's policy and procedure manual on the Sunshine Act before releasing any of the information contained herein.



**Legend**

**Point of Count**

- Interstate
- US Routes
- MO Routes
- Lettered Routes
- Business Routes and Loops
- Spur Routes and Alternate Routes

23462 Traffic Volume (AADT)

1673 Truck Volume

◆ County Seat

Urban Areas

Counties



AADT = Average Daily Traffic  
Note: Traffic Volumes Represent Estimated Average Daily Traffic  
Note: Truck Volumes Shown on Map Represent the 2011 Average Daily Traffic and Have Not Been Seasonally Adjusted.