

Missouri Department of Transportation

2015

Central District
Traffic Volume and Commercial
Vehicle Count Map

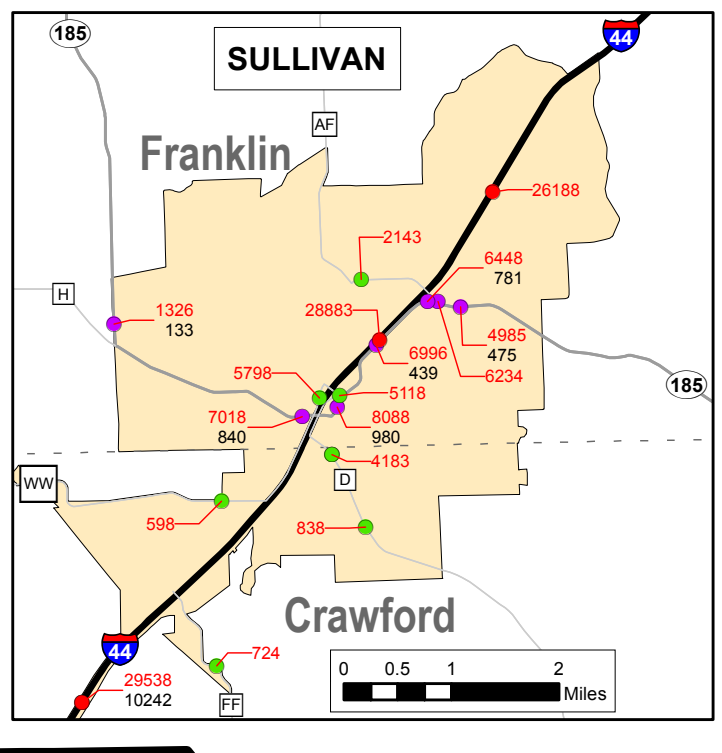
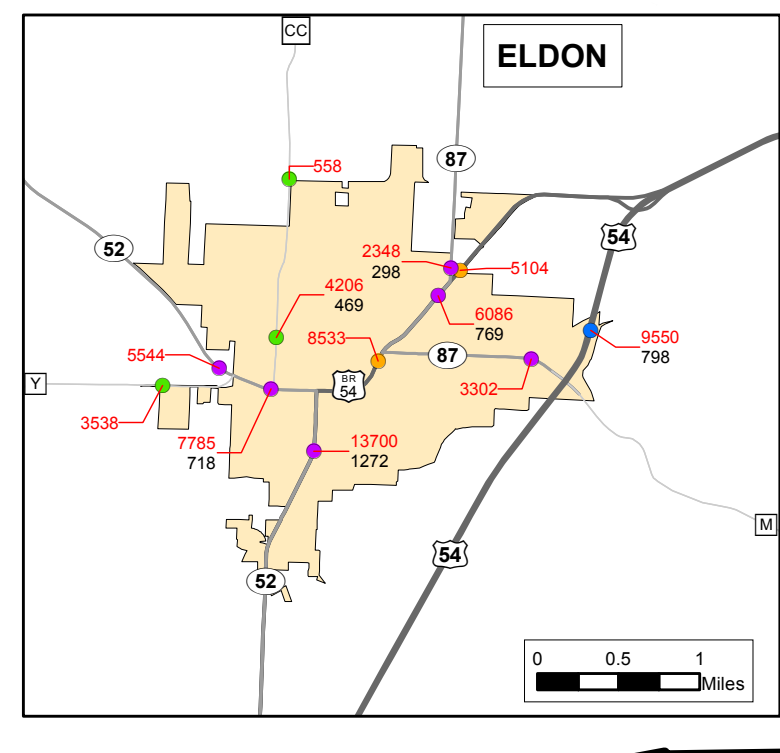
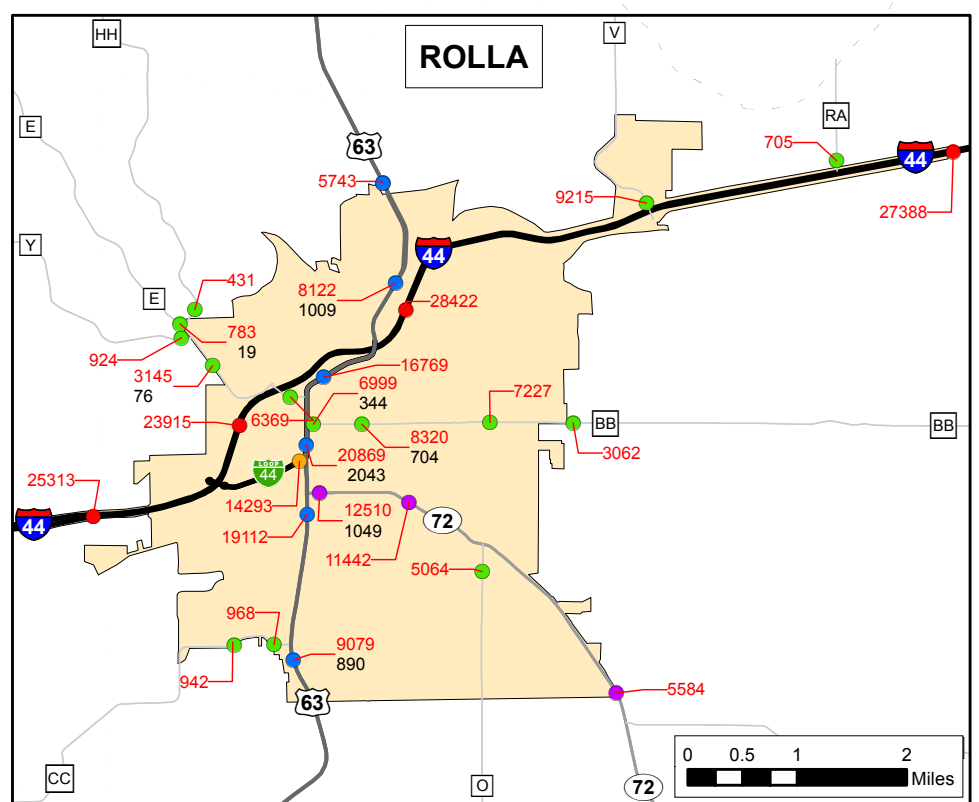
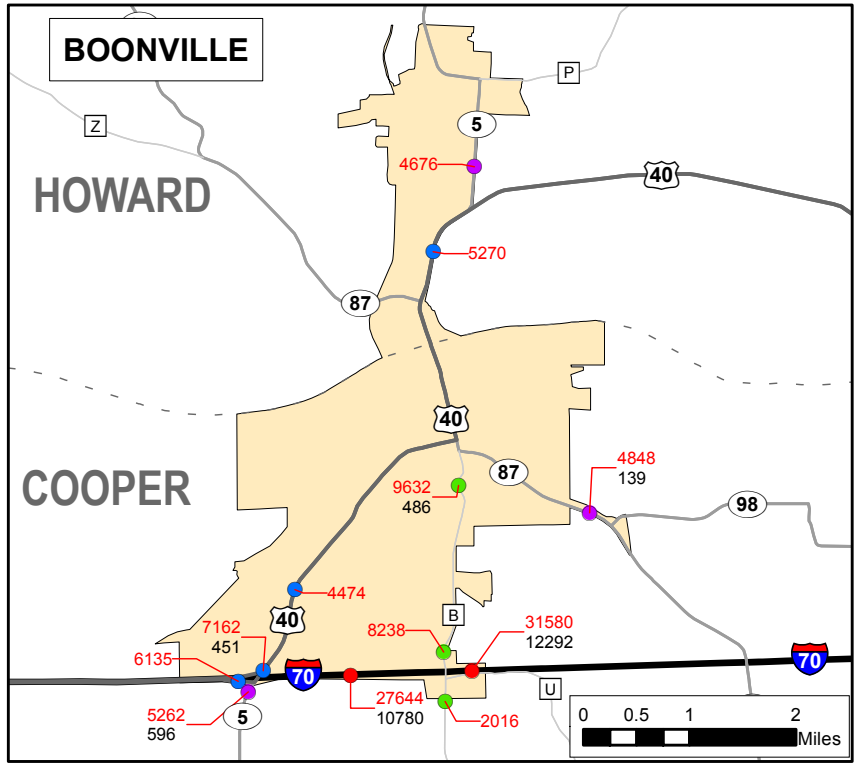
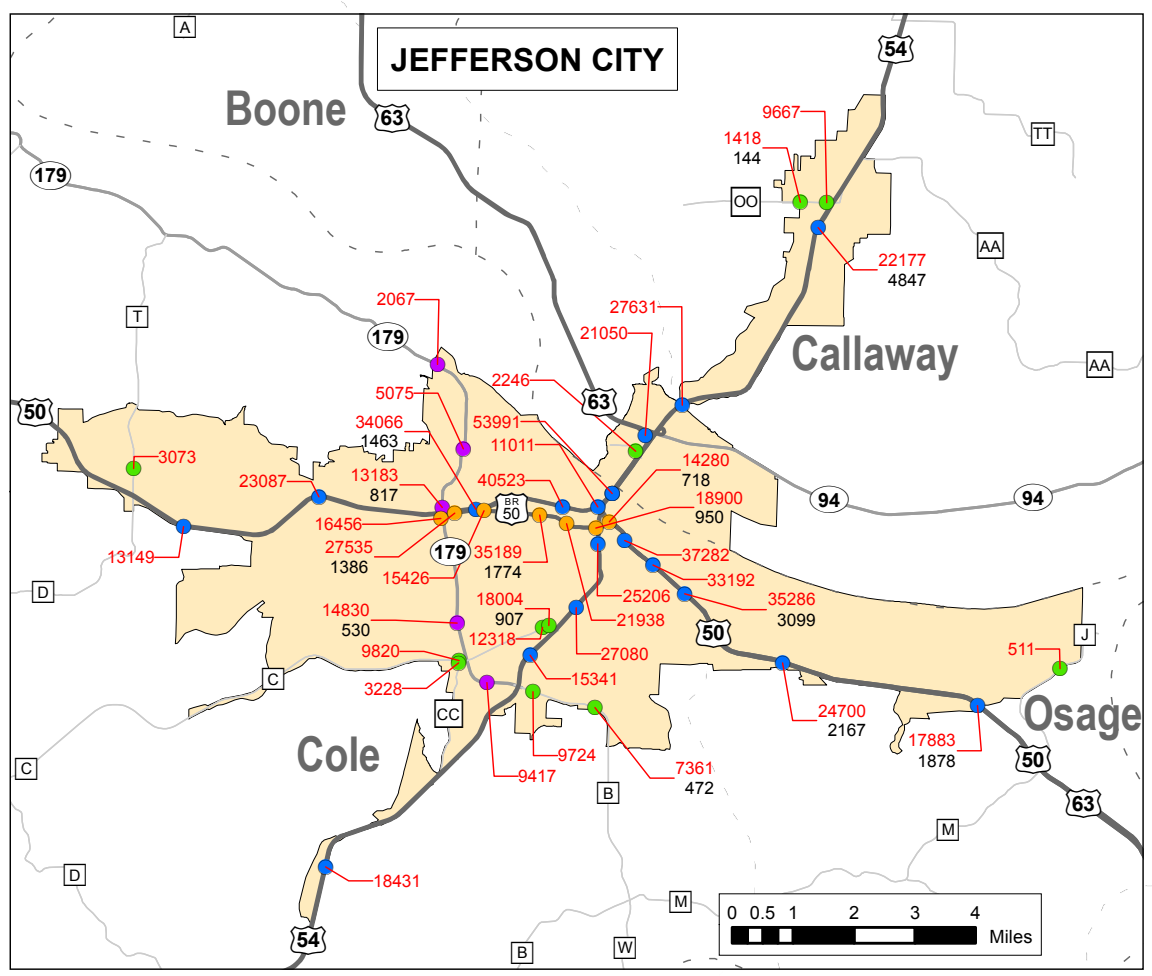
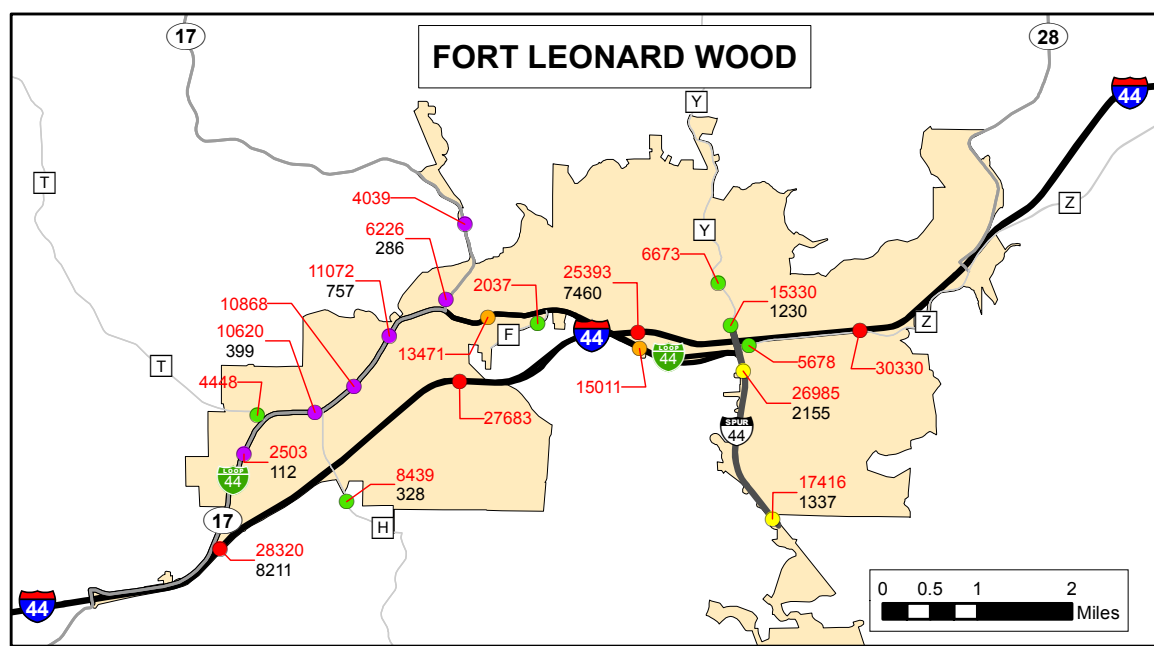
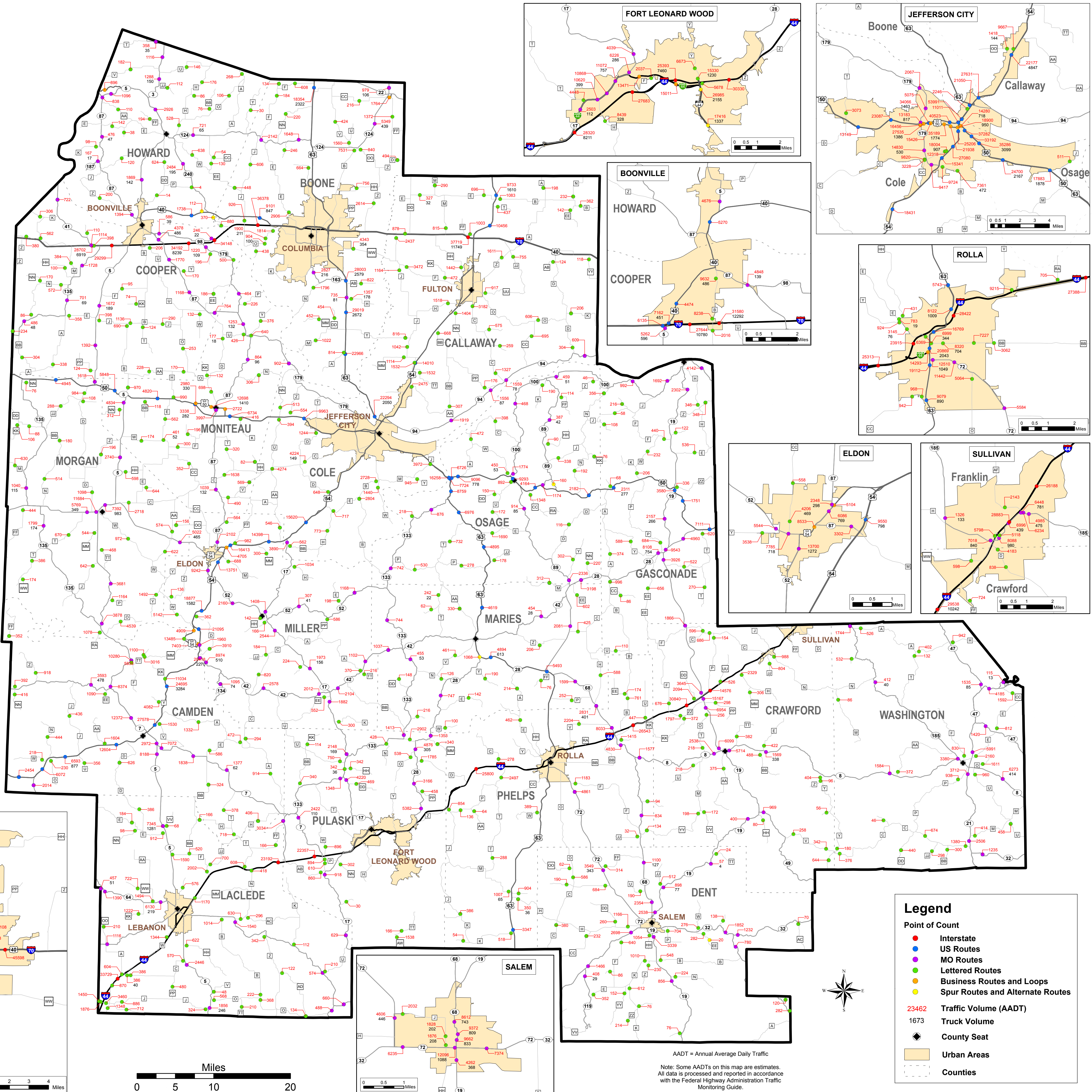
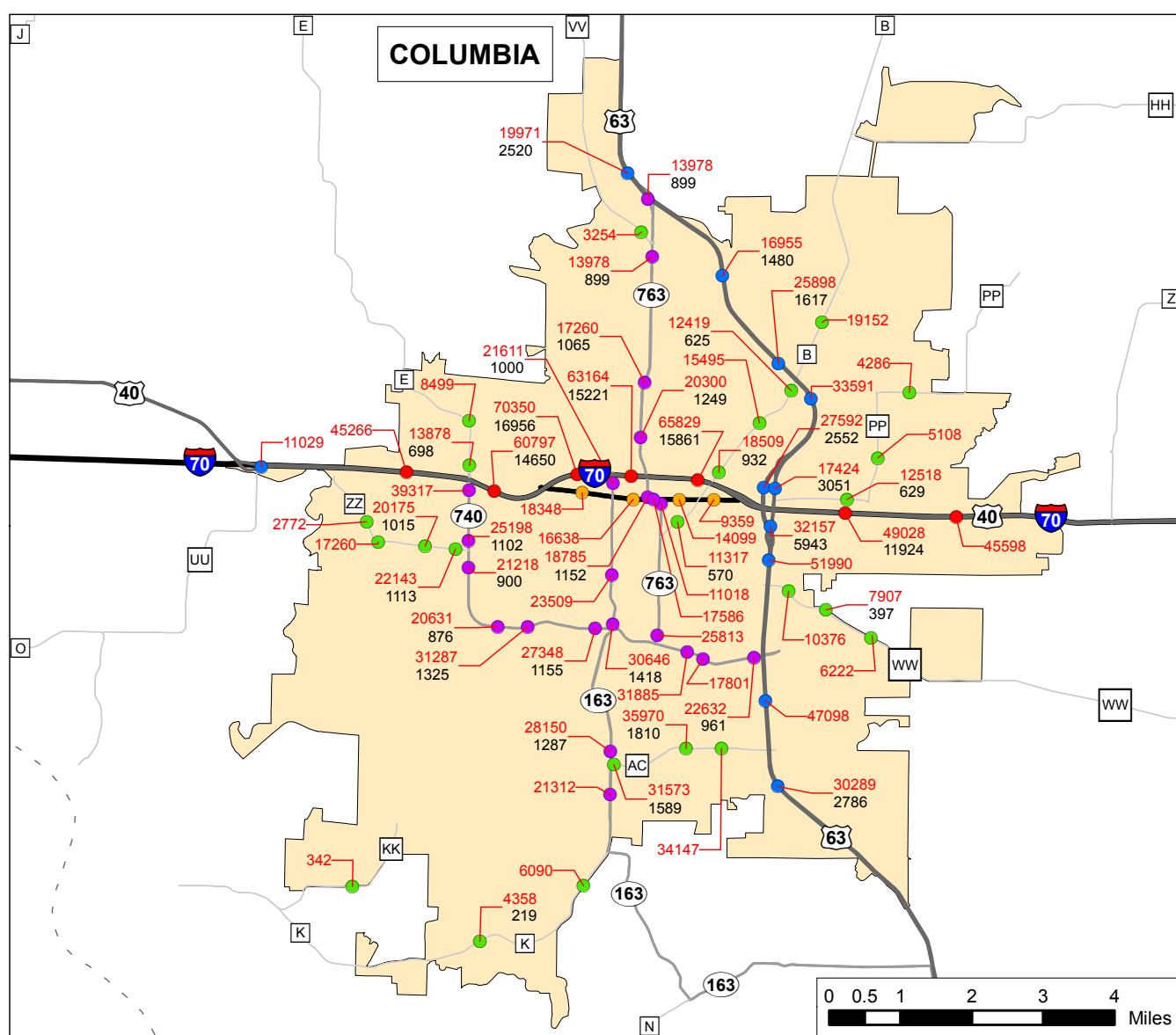
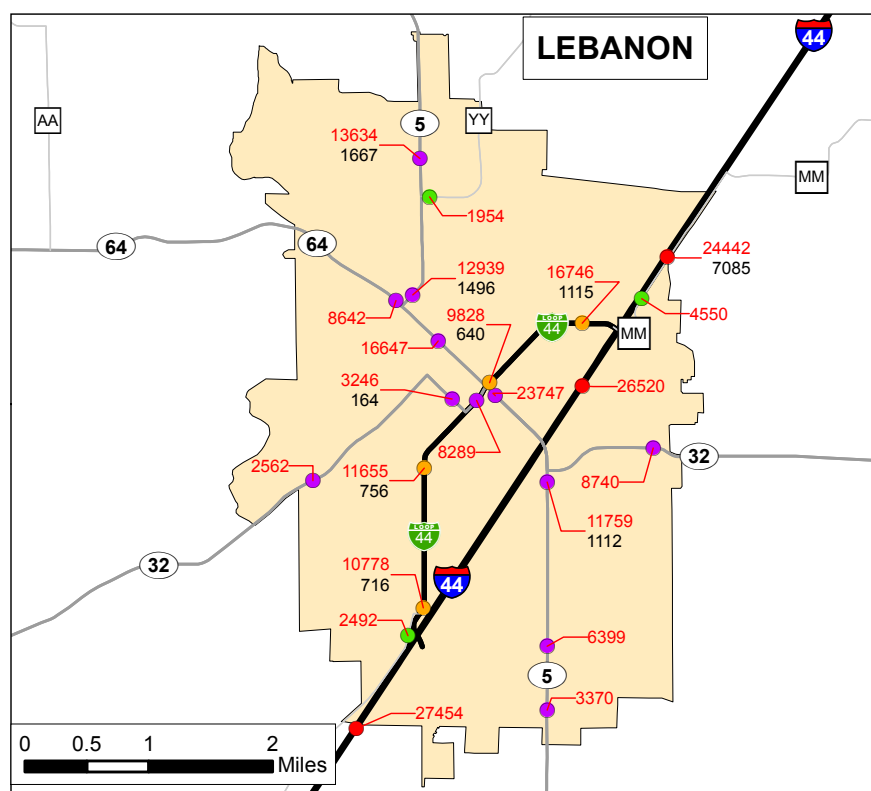
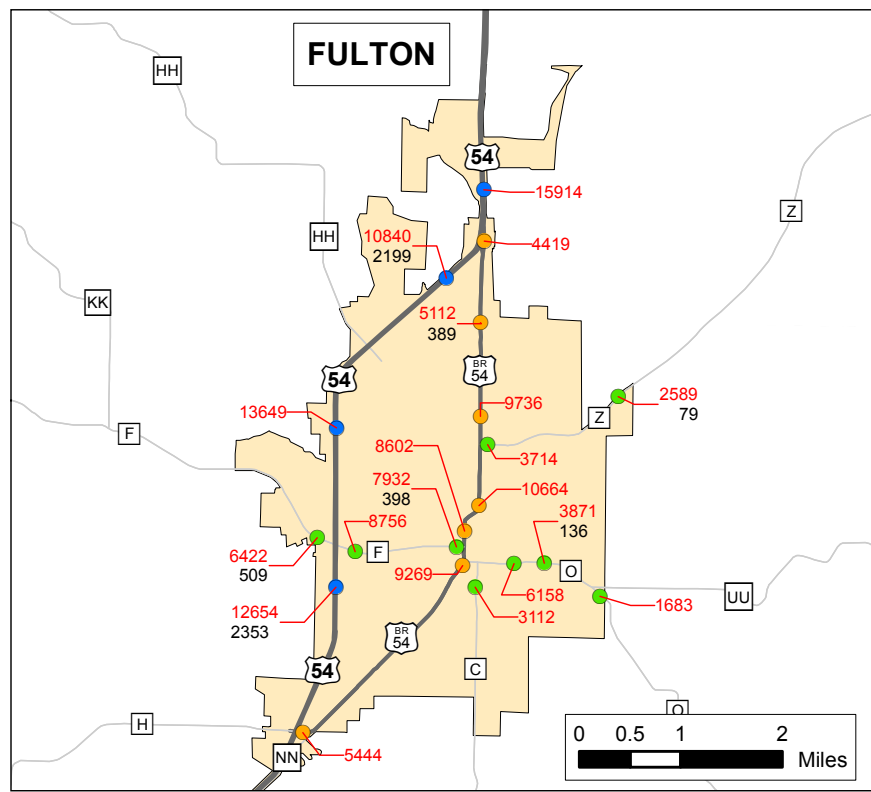
Prepared by:

Missouri Department of Transportation
Transportation Planning

105 W. Capitol Ave.
Jefferson City, MO 65102
Phone 1-888-ASK-MODOT
Fax (573) 526-8052

www.modot.org

This report contains information that is protected from disclosure by federal law, 23 USC Section 409 and the Missouri Open Records Law (Sunshine Act), Section 610.021 RSMo. Please review MoDOT's policy and procedure manual on the Sunshine Act before releasing any of the information contained herein.



Legend

- Point of Count
- Interstate
- US Routes
- MO Routes
- Lettered Routes
- Business Routes and Loops
- Spur Routes and Alternate Routes
- 23462 Traffic Volume (AADT)
- 1673 Truck Volume
- ◆ County Seat
- Urban Areas
- Counties

AADT = Annual Average Daily Traffic
Note: Some AADTs on this map are estimates.
All data is processed and reported in accordance
with the Federal Highway Administration Traffic
Monitoring Guide.