

Missouri Department of Transportation

2015

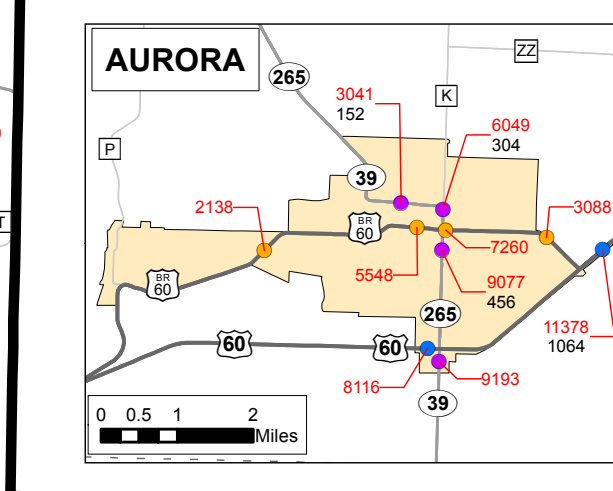
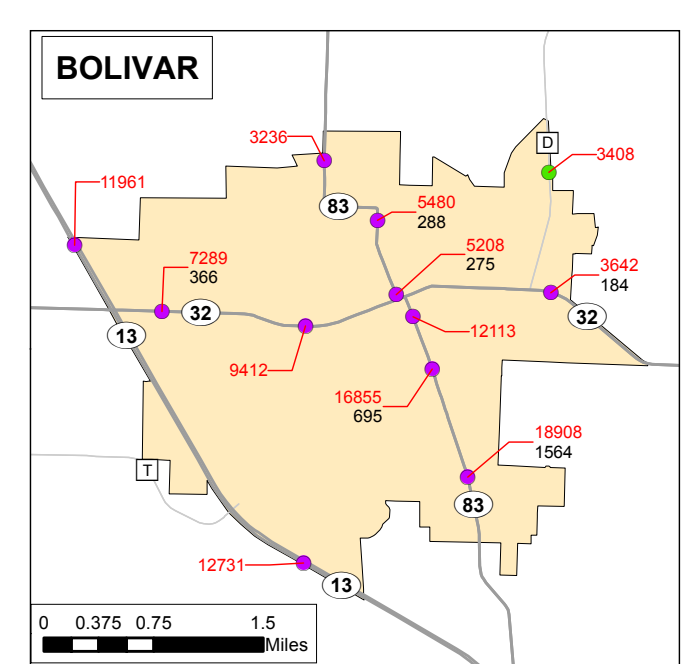
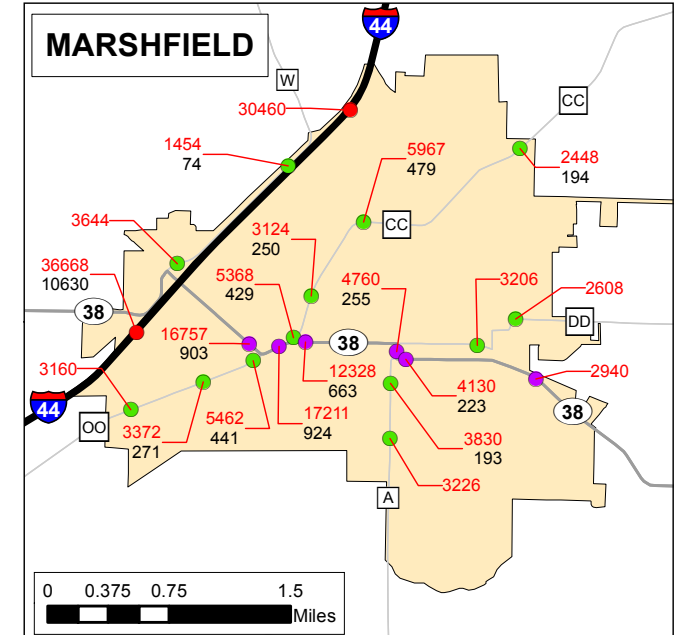
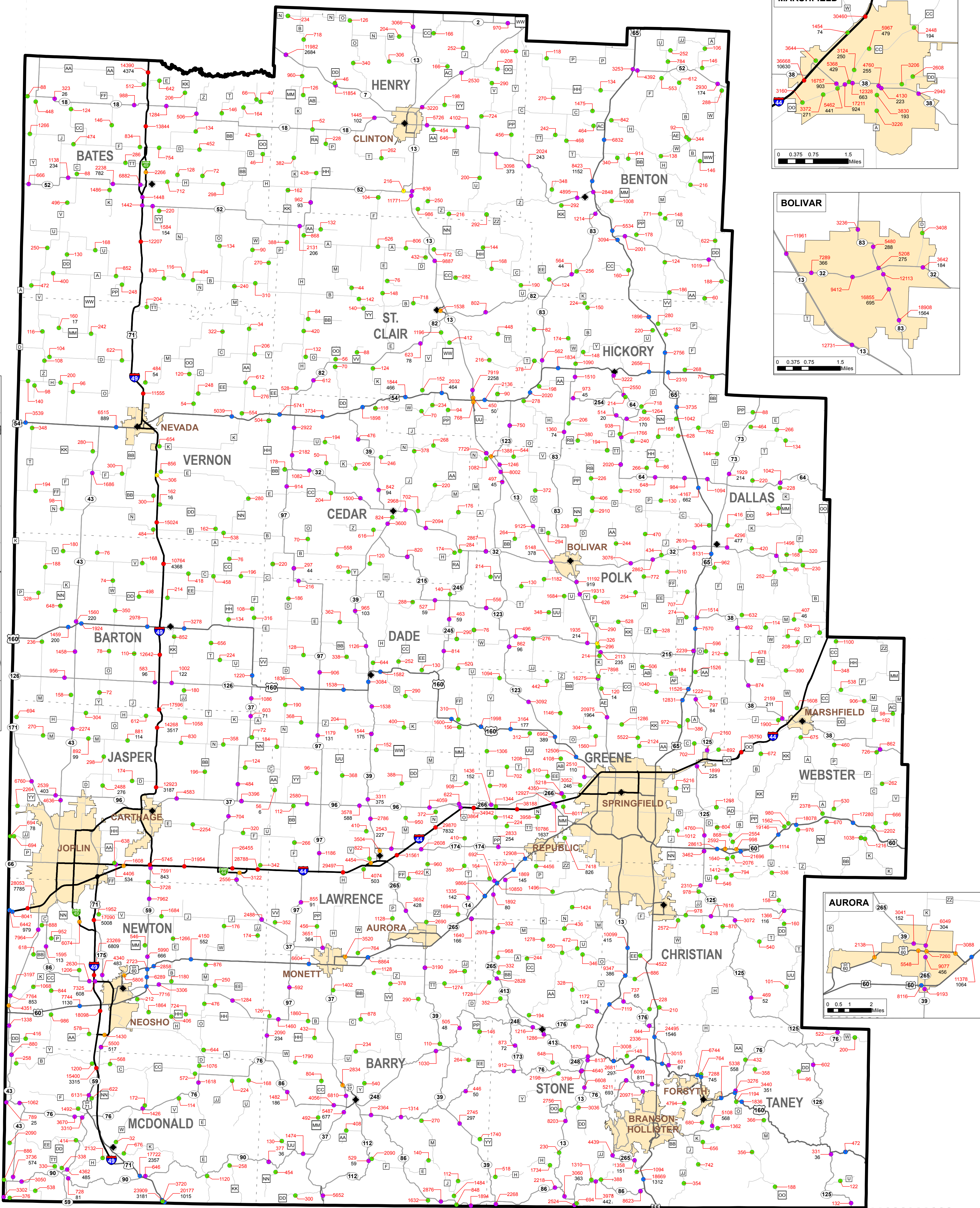
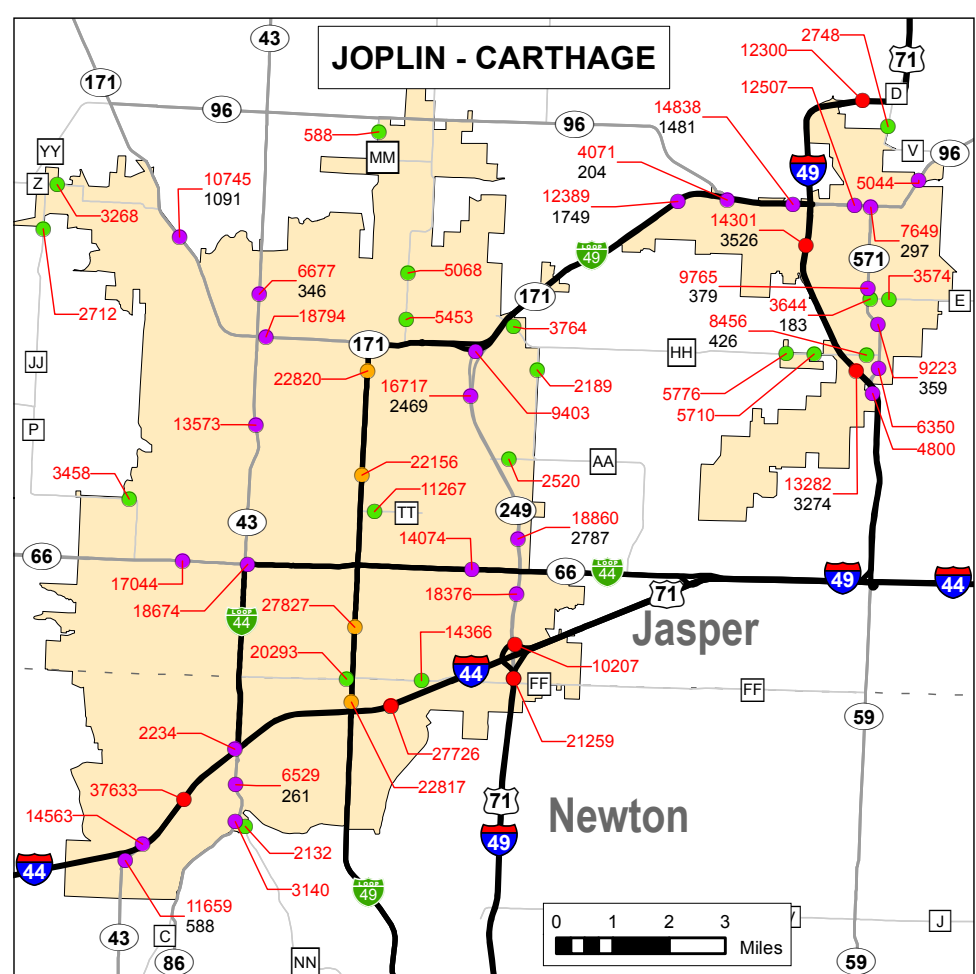
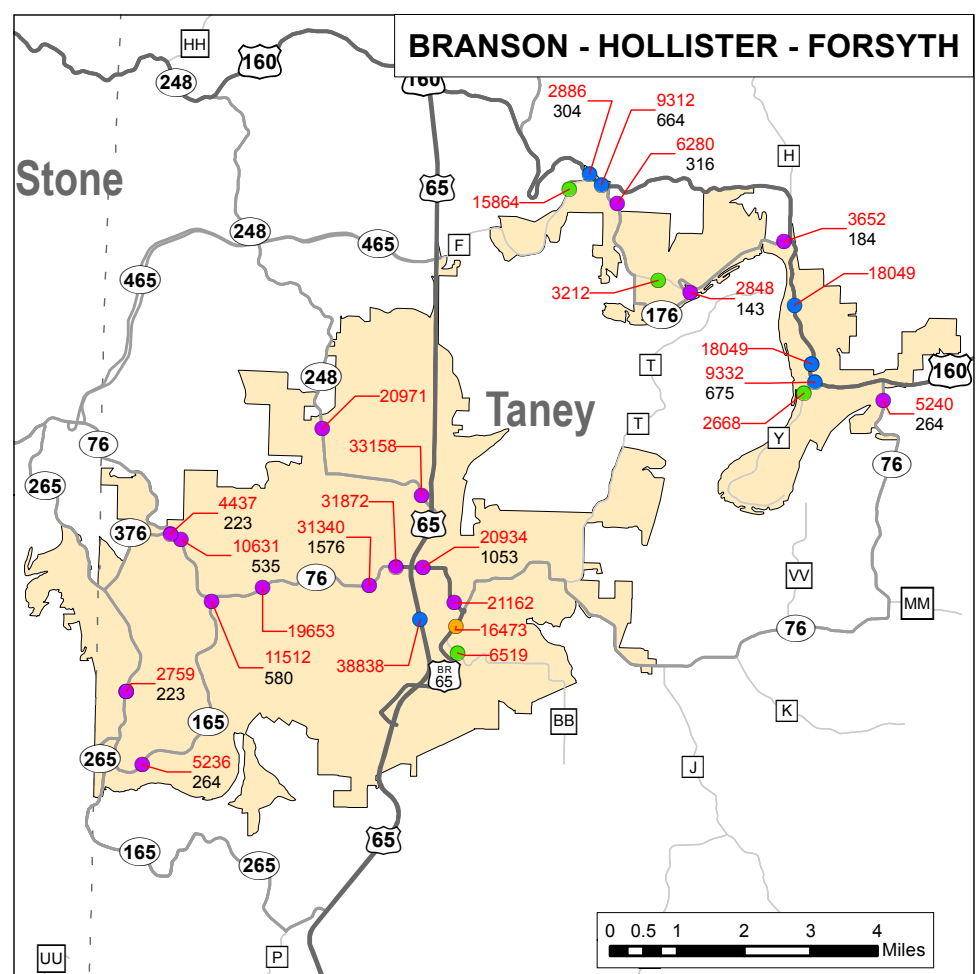
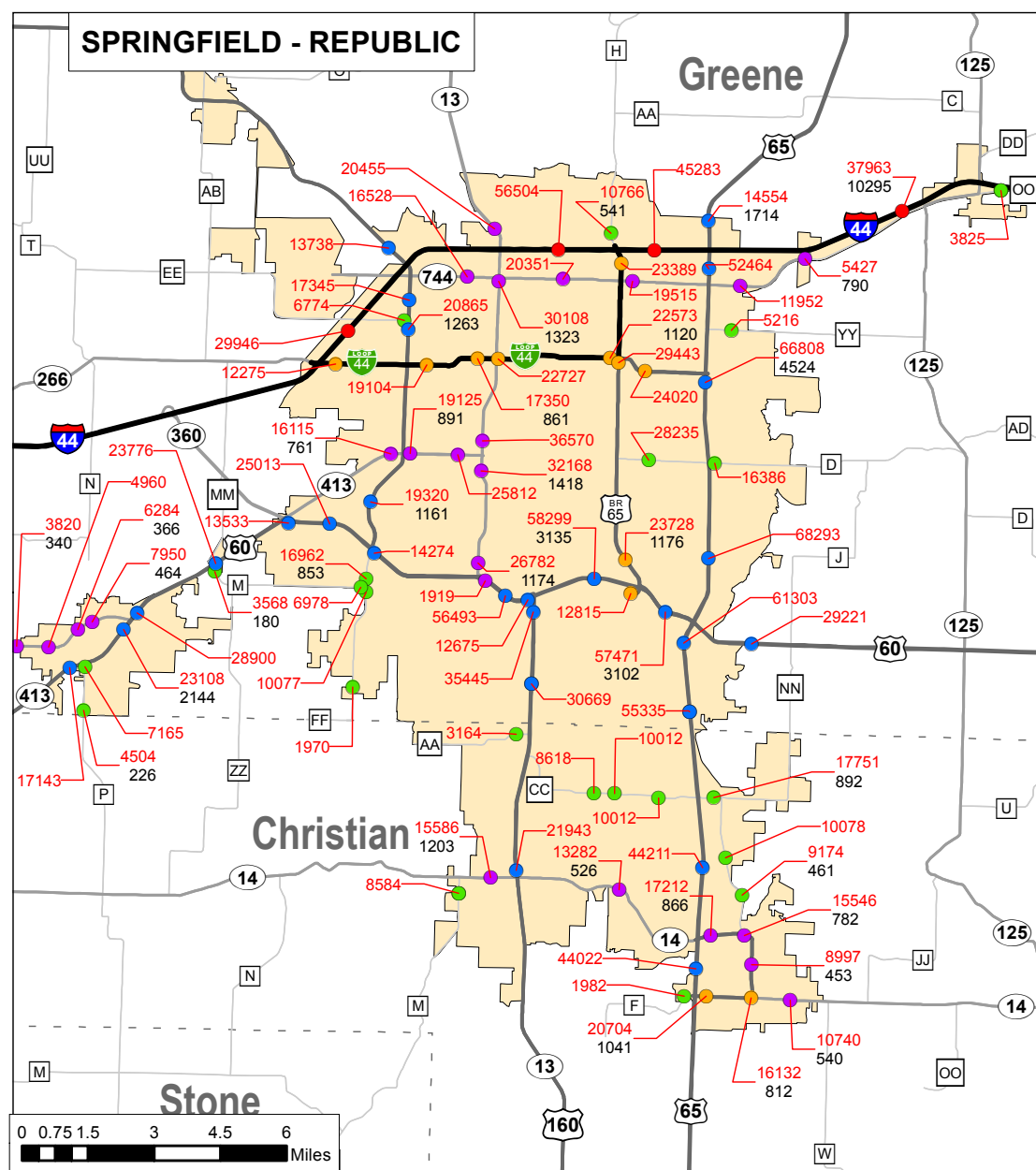
Southwest District Traffic Volume and Commercial Vehicle Count Map

Prepared by:

Missouri Department of Transportation
Transportation Planning
105 W. Capitol Ave.
Jefferson City, MO 65102
Phone 1-888-ASK-MODOT
Fax (573) 526-8052

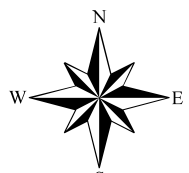
www.modot.org

This report contains information that is protected from disclosure by federal law, 23 USC Section 416 and the Missouri Open Records Law (Sunshine Act), Section 610.021 RSMo. Please review MoDOT's policy and procedure manual on the Sunshine Act before releasing any of the information contained herein.



Legend

- Point of Count
- Interstate
- US Routes
- MO Routes
- Lettered Routes
- Business Routes and Loops
- Spur Routes and Alternate Routes
- 23462 Traffic Volume (AADT)
- 1673 Truck Volume
- County Seat
- Urban Areas
- Counties



AADT = Annual Average Daily Traffic
Note: Some AADTs on this map are estimates. All data is processed and reported in accordance with the Federal Highway Administration Traffic Monitoring Guide.

