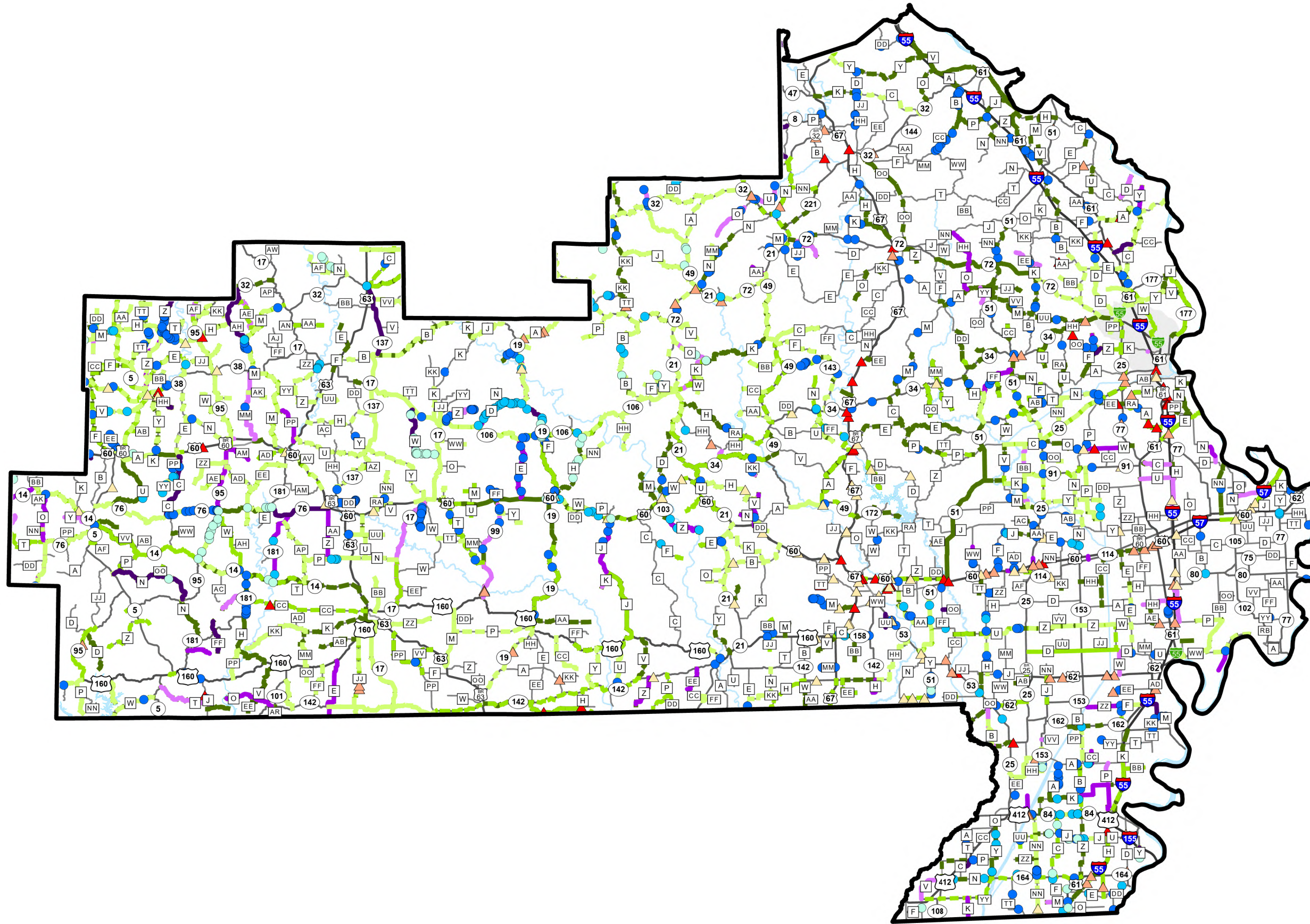


# Maintenance Operations Pavement and Bridge Work Plan Calendar Year 2024-2026



## SOUTHEAST District

- ▲ 2024 Bridge Deck Sealing
- 2024 Pipe Replacement
- 2024 Pavement Repair
- 2024 Pavement Treatments
- ▲ 2025 Bridge Deck Sealing
- 2025 Pipe Replacement
- 2025 Pavement Repair
- 2025 Pavement Treatments
- ▲ 2026 Bridge Deck Sealing
- 2026 Pipe Replacement
- 2026 Pavement Repair
- 2026 Pavement Treatments

### SFY 2023 Expenditures on all Transportation System Operations

Roadway:	\$41,000,000
Utilities and Tools:	\$22,900,000
Roadside:	\$7,500,000
Winter:	\$5,500,000
Incident Management:	\$800,000
Bridge:	\$4,900,000
Other <sup>1</sup> :	\$2,100,000

<sup>1</sup> Includes insurance for general liability, vehicle liability and workers compensation.

\*Note: These expenditures represent Labor, Equipment & Materials.

### MoDOT Annually (Statewide):

- Mows about 400,000 acres per cycle
- Manages over 2,600 Traffic Signals  
270 Message Signs  
1,170 Traffic Cameras
- Striping over 60,000 line miles
- Repairs over 10,000 lane miles of edge ruts
- Sweeping over 25,000 shoulder miles
- Replace over 135,000 linear feet of culvert pipe
- Flush over 5,000 bridges at least once

Work depicted on this map may change due to winter weather impacts or various impacts such as flooding, disasters or other immediate priorities that may occur or may be identified prior to the implementation of the various work plans.

