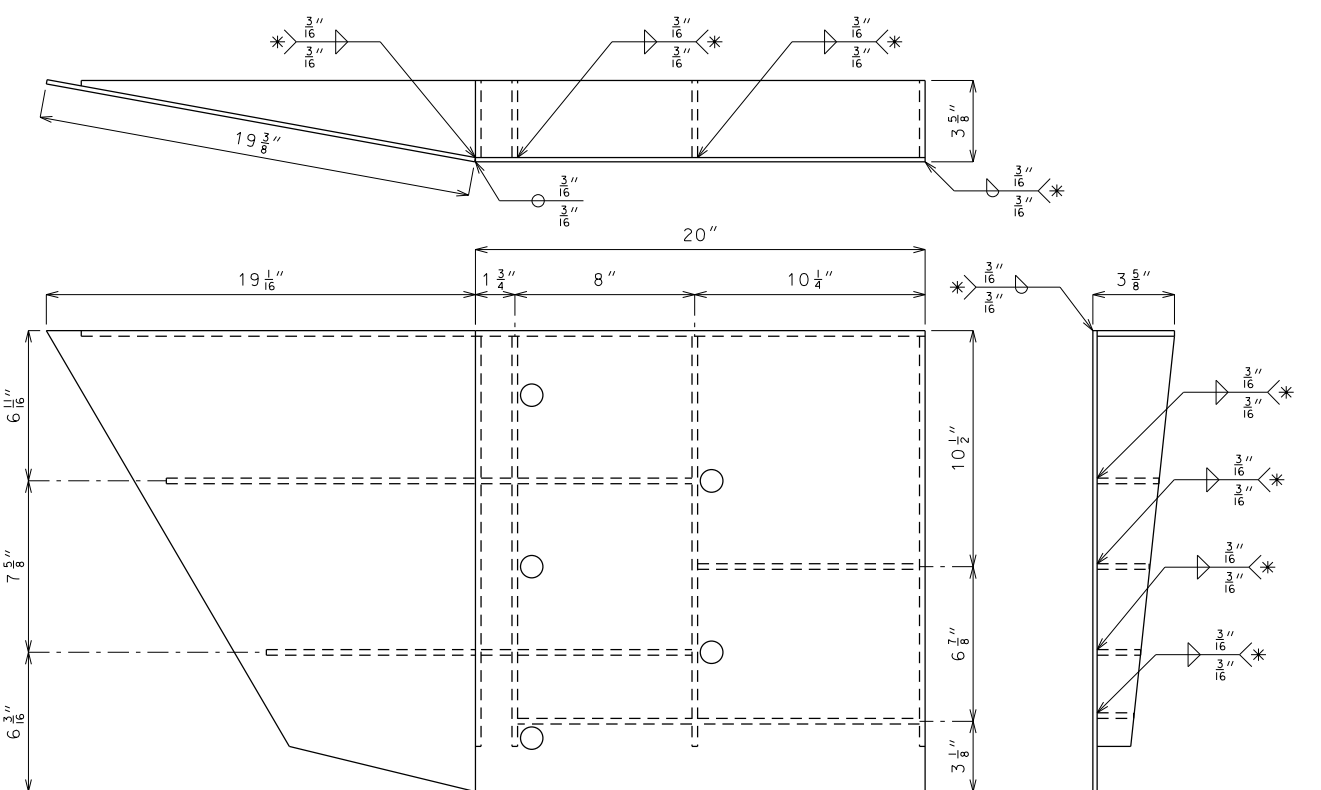
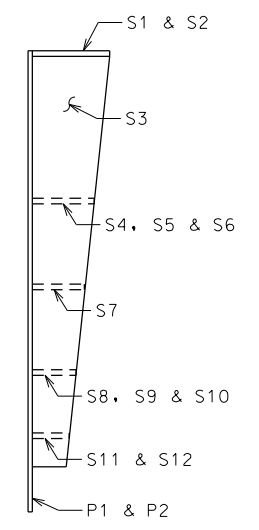
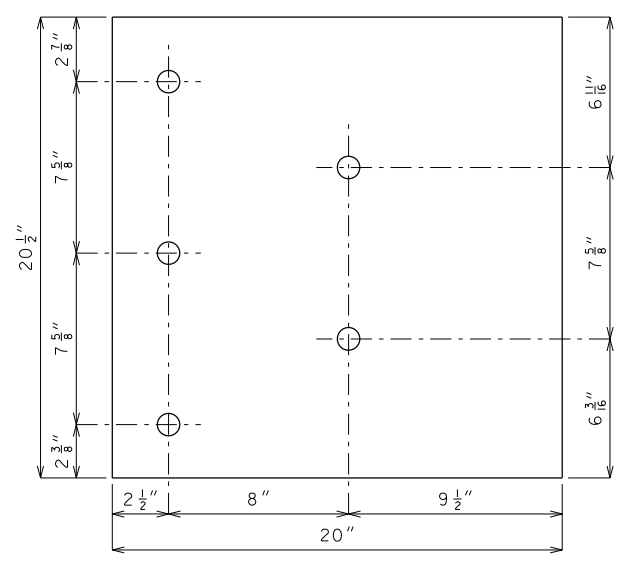


PLATE IDENTIFICATION

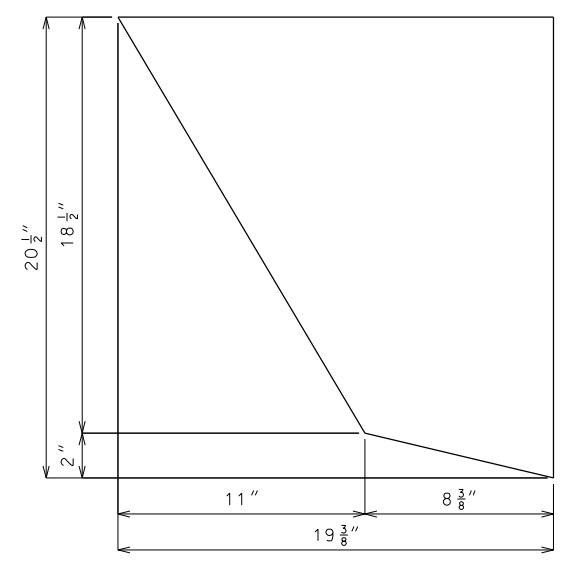


WELDING INSTRUCTION AND STIFFENER PLACEMENT  
 \* All fillet welds shall be one inch long spaced at 2 inches.

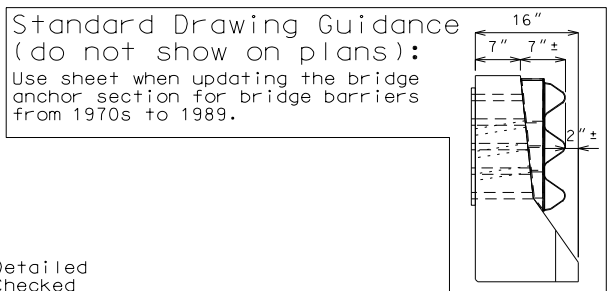
Stiffener Plate Dimensions and Quantities Per Assembly			
ID	Quantity	Shape	Dimensions (A x B x C)
S1	1		20" x 3 7/16"
S2	1		17 1/2" x 3 7/16" x 1/4"
S3	4		18 1/4" x 3 7/16" x 1 1/2"
S4	1		13 3/4" x 2 3/4" x 1/4"
S5	1		1 3/8" x 2 3/4"
S6	1		7 3/4" x 2 3/4"
S7	1		9 7/8" x 2 5/16"
S8	1		9 5/16" x 1 15/16" x 1/4"
S9	1		1 3/8" x 1 15/16"
S10	1		7 3/4" x 1 15/16"
S11	1		7 3/4" x 1 9/16"
S12	1		9 7/8" x 1 9/16"



P1 COVER PLATE DIMENSIONS



P2 COVER PLATE DIMENSIONS



DETAILS OF MODIFIED CONNECTOR PLATE

Note: This drawing is not to scale. Follow dimensions. Sheet No. of

**General Notes:**  
 Cover plates shall be 3/16 inch thick.  
 Stiffener plates shall be 1/4 inch thick.  
 Connector plate shall be fabricated from ASTM Grade A36 steel and galvanized. For galvanized requirements, see Sec 1040.  
 All hole diameters shall be one inch.

"THIS MEDIA SHOULD NOT BE CONSIDERED A CERTIFIED DOCUMENT."  
 DATE PREPARED: 4/29/2020  
 ROUTE: \* STATE: MO  
 DISTRICT: BR SHEET NO.: \*  
 COUNTY: \*  
 JOB NO.: \*  
 CONTRACT ID.: \*  
 PROJECT NO.: \*  
 BRIDGE NO.: BAC21  
 MISSOURI HIGHWAYS AND TRANSPORTATION COMMISSION  
 MoDOT  
 105 WEST CAPITOL JEFFERSON CITY, MO 65102  
 1-888-ASK-MODOT (1-888-275-6636)  
 IF A SEAL IS PRESENT ON THIS SHEET IT HAS BEEN ELECTRONICALLY SEALED AND DATED.