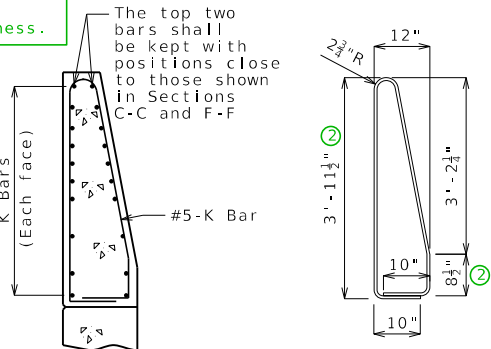


DETAILS OF GUARD RAIL ATTACHMENT

- (1) 5-#5-K1 @ 4" cts.
- (2) 2 spaces @ 4"
- (3) 5-#5-K4 & K5
- (4) 3-#5-K6 & K7
- (5) 3-#5-K13 or K15 @ 4 1/2" cts., each face
- (6) 3 Spaces @ 3 1/8"
- (7) Spaced as shown, each face
- (8) To top of bar

Standard Drawing Guidance: (do not show on plans)
 ① Dimensions are based on a 2.0% sloped deck. Subtract 1/8" for a 3/16" per foot sloped deck.
 ② Based on 8 1/2" slab. Adjust for different slab thickness.



K10-K11 BAR PERMISSIBLE ALTERNATE SHAPE

(Other K bars not shown for clarity)

General Notes:

Reinforcing Steel:

Concrete traffic barrier delineators shall be placed on top of the barrier as shown on Missouri Standard Plan 617.10 and in accordance with Sec 617. Delineators on bridges with two-lane, two-way traffic shall have retroreflective sheeting on both sides. Concrete traffic barrier delineators will be considered completely covered by the contract unit price for Type D Barrier.

Minimum clearance to reinforcing steel shall be 1 1/2" - except as shown for bars embedded into end bent.

TYPE D BARRIER AT END BENTS

(Left barrier shown, right barrier similar)

The K10-K11 bar combination may be furnished as one bar as shown, at the contractor's option. All dimensions are out to out.

DATE PREPARED 10/13/2023	STATE MO	SHEET NO. 3	COUNTY	JOB NO.	CONTRACT ID.	PROJECT NO.	BRIDGE NO.	DESCRIPTION	DATE	MISSOURI HIGHWAYS AND TRANSPORTATION COMMISSION	<p>105 WEST CAPITOL JEFFERSON CITY, MO 65102 1-888-ASK-MODOT (1-888-275-6636)</p>

Detailed Checked