

- (1) 5-#5-K1 @ 4" cts.
- (2) 2 spaces @ 4"
- (3) 5-#5-K4 & K5
- (4) 3-#5-K6 & K7
- (5) 2-#5-K13 @ 4 1/2" cts., each face
- (6) 3 spaces @ 3 3/8"
- (7) Spaced as shown, each face
- (8) 2-#5-K13 (Roadway face)
- (9) To top of bar

General Notes:

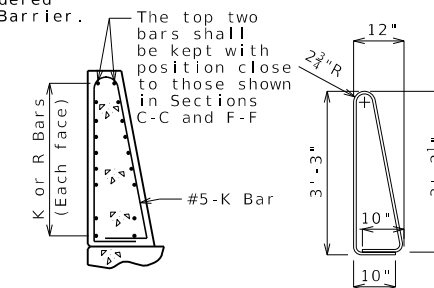
Concrete traffic barrier delineators shall be placed on top of the barrier as shown on Missouri Standard Plan 617.10 and in accordance with Sec 617. Delineators on bridges with two-lane, two-way traffic shall have retroreflective sheeting on both sides. Concrete traffic barrier delineators will be considered completely covered by the contract unit price for Type D Barrier.

Reinforcing Steel:

Minimum clearance to reinforcing steel shall be 1 1/2".
Use a minimum lap of 3'-1" between horizontal K bars and R bars.

Standard Drawing Guidance: (Do not show on plans)

① Show part of existing end bent.

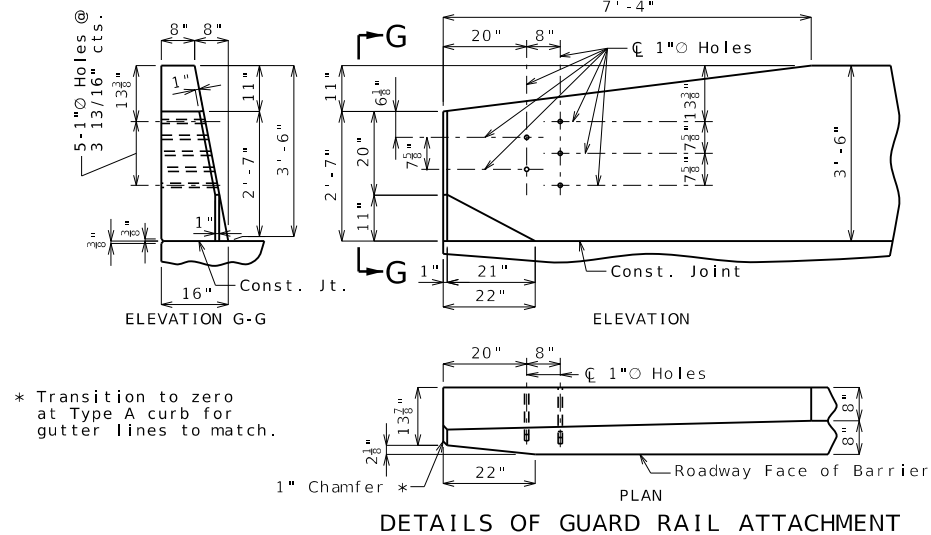


K10-K11 BAR PERMISSIBLE ALTERNATE SHAPE

(Other K bars not shown for clarity)

The K10-K11 bar combination may be furnished as one bar as shown, at the contractor's option.

All dimensions are out to out.



* Transition to zero at Type A curb for gutter lines to match.



DETAILS OF GUARD RAIL ATTACHMENT

TYPE D BARRIER AT END BENTS

(Left barrier shown, right barrier similar)

DATE PREPARED	
10/13/2023	
ROUTE	STATE
	MO
DISTRICT	SHEET NO.
	4

COUNTY	
JOB NO.	
CONTRACT ID.	
PROJECT NO.	
BRIDGE NO.	

DESCRIPTION	DATE

MISSOURI HIGHWAYS AND TRANSPORTATION COMMISSION

105 WEST CAPITOL
JEFFERSON CITY, MO 65102
1-888-ASK-MODOT (1-888-275-6636)