



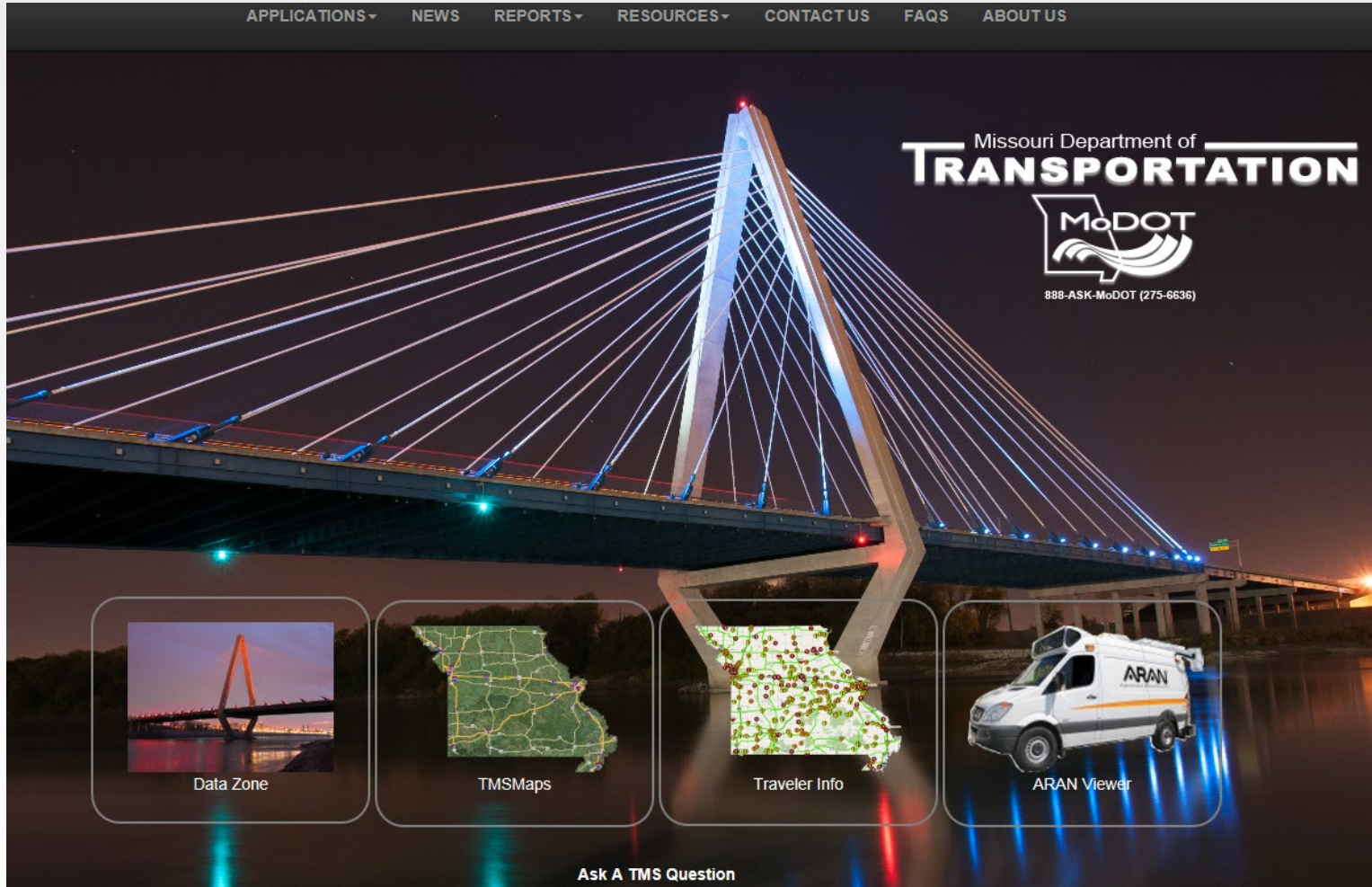
# Leveraging MoDOT Data Resources

**Myrna Tucker, MoDOT TMS Administrator**  
**Darrell Knierim, Senior Transportation Planner**  
**Statewide Planning Partner Meeting**  
**February 8, 2019**

# MoDOT's #1 Data Resource: TMS: Transportation Management System



- Applications
- Reports
- Mapping Tools
- Metadata



# MoDOT's #1 Data Resource: TMS: Transportation Management System



- Applications
- Reports
- Mapping Tools
- Metadata

APPLICATIONS ▾ NEWS REPORTS ▾ RESOURCES ▾ CONTACT US FAQs ABOUT US

- Adopt A Highway ▶
- Bridge Management System ▶
- Client Server Applications ▶
- Code Tables ▶
- Outdoor Advertising ▶
- Pavement Management System ▶
- Design ▶
- Safety Management System ▶
- Stormwater ▶
- Traffic Management System ▶
- Traveler Information System ▶
- Travelway Features ▶
- Travelways Management System ▶
- Emergency Operations Map
- Intelligent Transportation System
- Inventory Validation
- Railroad Management System
- Routine Maintenance
- STIP Management System
- State of the System
- Striping Inventory System
- Travelway Lane

Missouri Department of **TRANSPORTATION**  
MoDOT  
888-ASK-MoDOT (275-6636)

Data Zone TMS Maps Traveler Info ARAN Viewer

Ask A TMS Question

# Timing of TMS Data



## Crash Data

- 2017 crashes finalized Nov. 1, 2018
- Paper reports – May 2018
- Electronic reports – October 2018

# Timing of TMS Data



## Crash Data

- 315 out of 600 agencies reporting electronically
- Large agencies still reporting by paper
  - KCPD
  - St. Louis City
  - Lee's Summit
  - St. Peters

# Timing of TMS Data



## Crash Data

- Crashes processed by MSHP show up in TMS the next day
- 2019 crash reports in TMS

# Timing of TMS Data



# Timing of TMS Data



## TMS Annual Data Freeze

- Finalize all 2018 roadway, traffic and pavement data for official reporting

What does this mean to our partners?

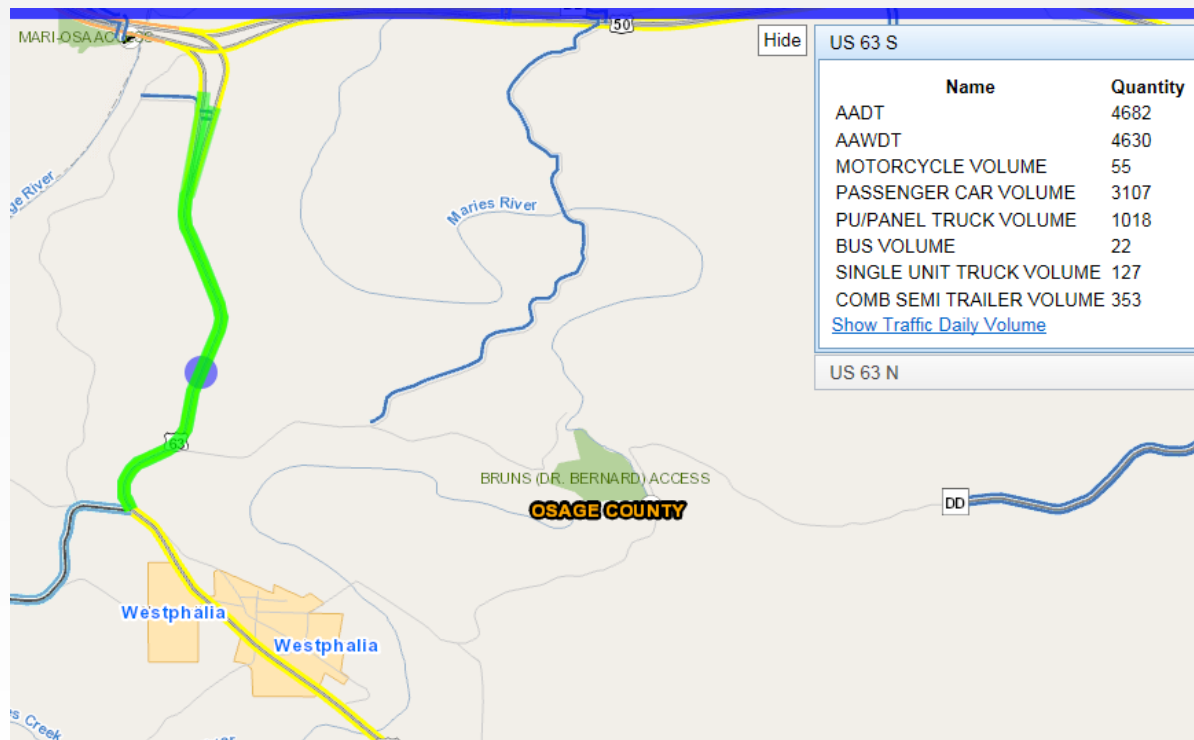


# Timing of TMS Data



## Traffic Data

- 2018 AADT will be available



# Timing of TMS Data



## Mileage

- 2018 mileage and VMT will be available

A screenshot of a web application interface titled "All Systems VMT - Home - Help". The interface includes a navigation bar with buttons for "My Layouts", "Save Layout", "Export to Excel", "Summary Type", and "Sum". Below this is a yellow warning banner that reads "Caution! This grid has fields that are filtered. Those fields are: YEAR = 2017". A "Filter Area" dialog box is open, showing a list of years: "(Show All)", "2015", "2016", and "2017". The "2017" option is selected with a checkmark. The dialog also has "OK" and "Cancel" buttons. To the right of the filter dialog is a "Column Area" with a table header "FUNCTIONAL\_CLASS" and a "Data Area" with a table header "VMT".

# Timing of TMS Data



## TMS route updates (quarterly)

- Update TMS line work to include new construction
- General corrections for missing roads, spelling errors, etc.

# TMS Data Zone



## MoDOT Network (Virtual Machine)

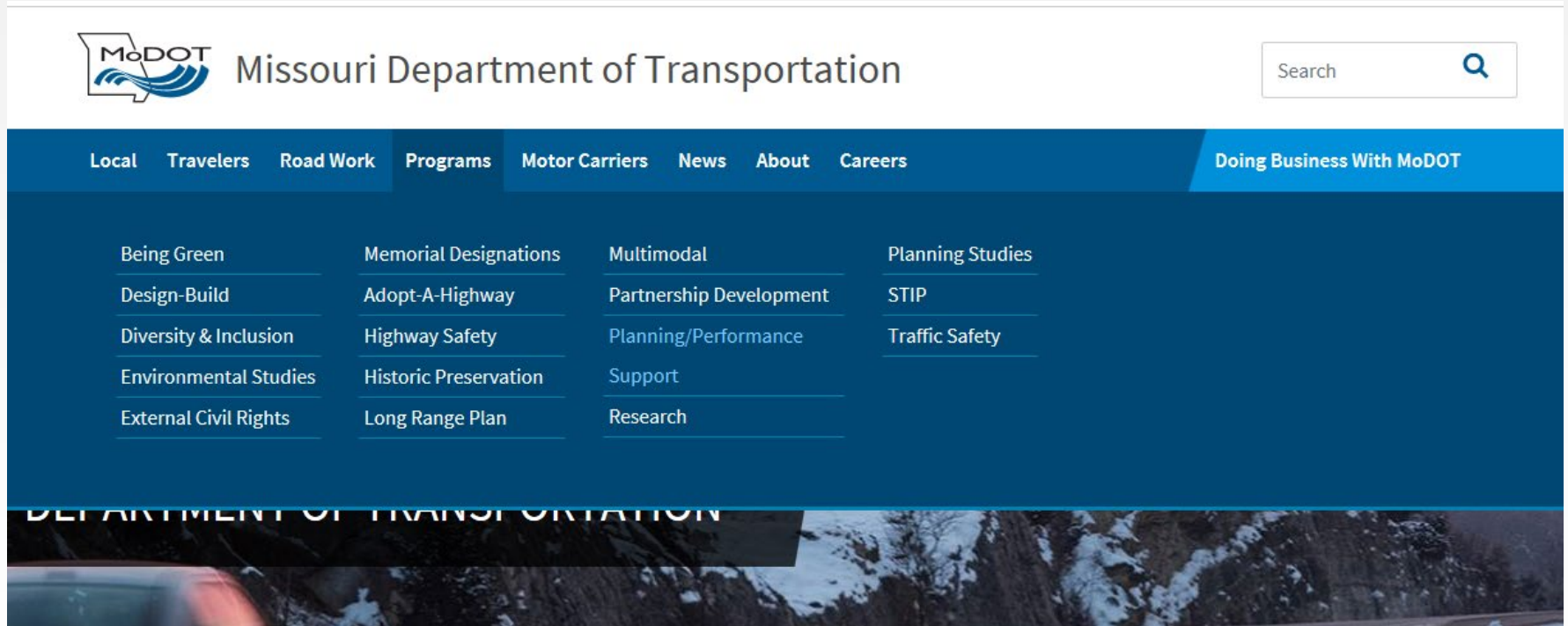
The screenshot shows the MoDOT website home page. At the top is a dark navigation bar with white text for 'APPLICATIONS', 'NEWS', 'REPORTS', 'RESOURCES', 'CONTACT US', 'FAQS', and 'ABOUT US'. Below this is a large hero image of a cable-stayed bridge at night, illuminated with blue and white lights. In the upper right of the hero image, the text 'Missouri Department of TRANSPORTATION' is displayed in white, with the MoDOT logo and the phone number '888-ASK-MoDOT (275-6636)' below it. At the bottom of the page, there are four rounded rectangular buttons with icons and labels: 'Data Zone' (with a bridge icon), 'TMSMaps' (with a green map icon), 'Traveler Info' (with a green map icon showing data points), and 'ARAN Viewer' (with a white van icon). At the very bottom center, the text 'Ask A TMS Question' is displayed.

# TMS Data Zone



Website available to external customers

<https://www.modot.org/>

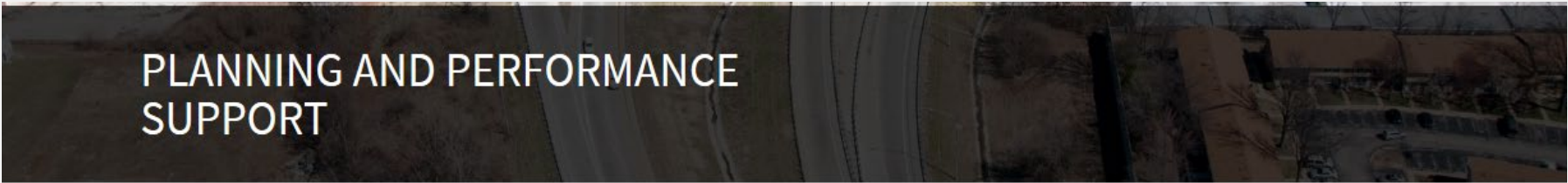


# TMS Data Zone



Website available to external customers

<https://www.modot.org/>



## EXPLORE THIS TOPIC

- Home
- Long-Range Transportation Plan
- Statewide Transportation Improvement Program
- ▼ Metropolitan Planning Organizations
- List of Missouri MPOs
- Regional Planning Commissions

## Planning and Performance Support

### MODOT'S PLANNING AND PERFORMANCE SUPPORT

MoDOT maintains two primary planning documents: a five-year statewide transportation improvement plan and a 20-year long-range transportation plan. The STIP focuses on the next five years of transportation construction across the state, while the Long-Range Transportation Plan takes a broader look at transportation needs for all modes of transportation and sets the direction for the annual STIP updates.

[MoDOT's Current Statewide Transportation Improvement Program](#)

[MoDOT's Current Long-Range Transportation Plan](#)

[MoDOT's Datazone](#)

# TMS Data Zone



Add to Favorites bar

Missouri Department of  
**TRANSPORTATION**



888-ASK-MoDOT (275-6636)



TRAFFIC



SAFETY



PLANNING



BRIDGE



DESIGN

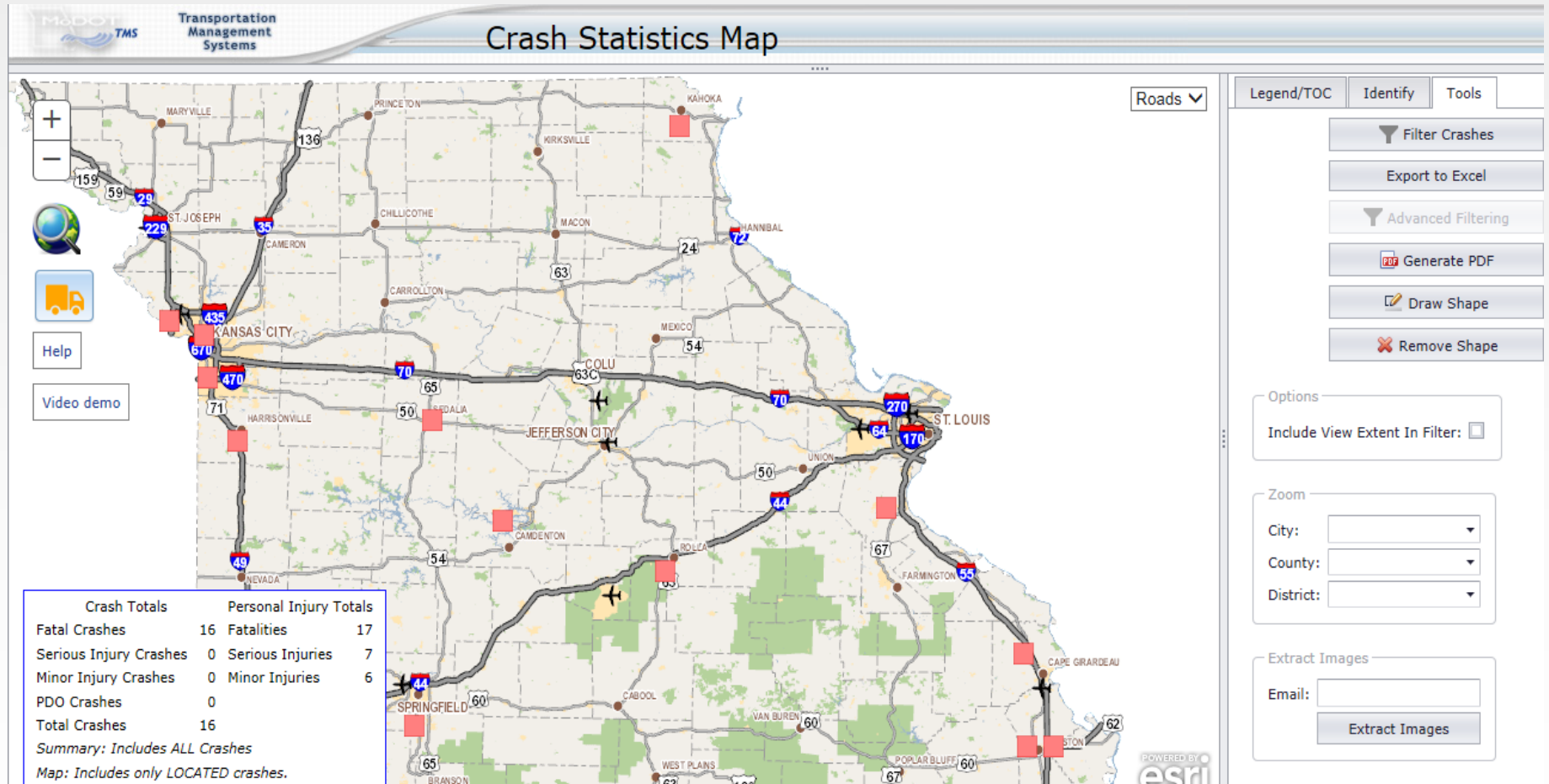


CONSTRUCTION



MULTIMODAL

# Crash Statistics Map





# Crash Statistics Map



## Crash Filter

### 1. Select Crash Attribute

- ▼ Crash Filters
  - ▶ Crash Attributes
  - ▶ Roadway Attributes
  - ▶ Involving

(† indicates LOCATED crashes only)

### 2. Select Filter Type

Equal To

### 3. Select Values

- 2019
- 2018
- 2017
- 2016
- 2015
- 2014
- 2013
- 2012
- 2011
- 2010
- 2009

### 4. Complete

Add Filter

When you select a filter, information about the filter will appear in this area.

#### Filters

Severity Equals 'FATAL' Year Equals '2019'

# TMSMaps



The screenshot shows the website's navigation menu at the top: APPLICATIONS ▾, NEWS, REPORTS ▾, RESOURCES ▾, CONTACT US, FAQs, and ABOUT US. The main header features the text "Missouri Department of TRANSPORTATION" and the MoDOT logo with the phone number 888-ASK-MoDOT (275-6636). Below the header are four interactive buttons: "Data Zone" (with a bridge image), "TMSMaps" (with a road map of Missouri), "Traveler Info" (with a map of Missouri showing traffic data), and "ARAN Viewer" (with an image of a white ARAN van). At the bottom center, there is a link that says "Ask A TMS Question".

# TMSMaps

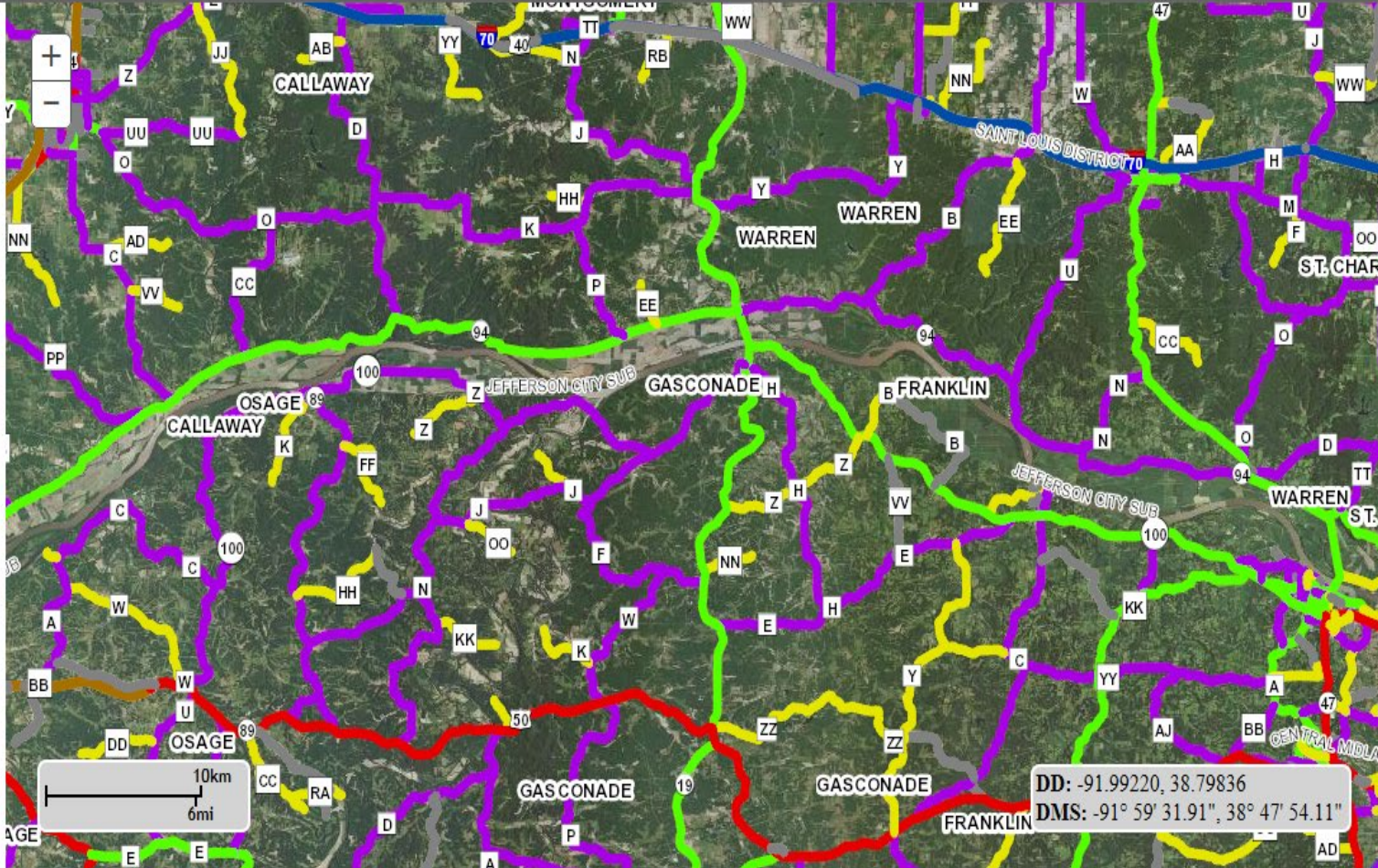


TMSMaps



**Legend**

- Travelway Data
  - Outdoor Advertising Control
  - Access Control
  - Alias
  - Scenic Byway
  - Truck Routes
  - Federal Aid Routes
  - Federal System Class
  - State System Class
  - Functional Class
    - INTERSTATE
    - FREEWAY
    - EXPRESSWAY
    - PRINCIPAL ARTERIAL
    - MINOR ARTERIAL
    - MAJOR COLLECTOR
    - COLLECTOR
    - MINOR COLLECTOR
    - LOCAL
  - Owner
  - Roadway Type
  - Speed Limit
  - ODA NHS FAP Comparison
  - Continuous Operations Routes

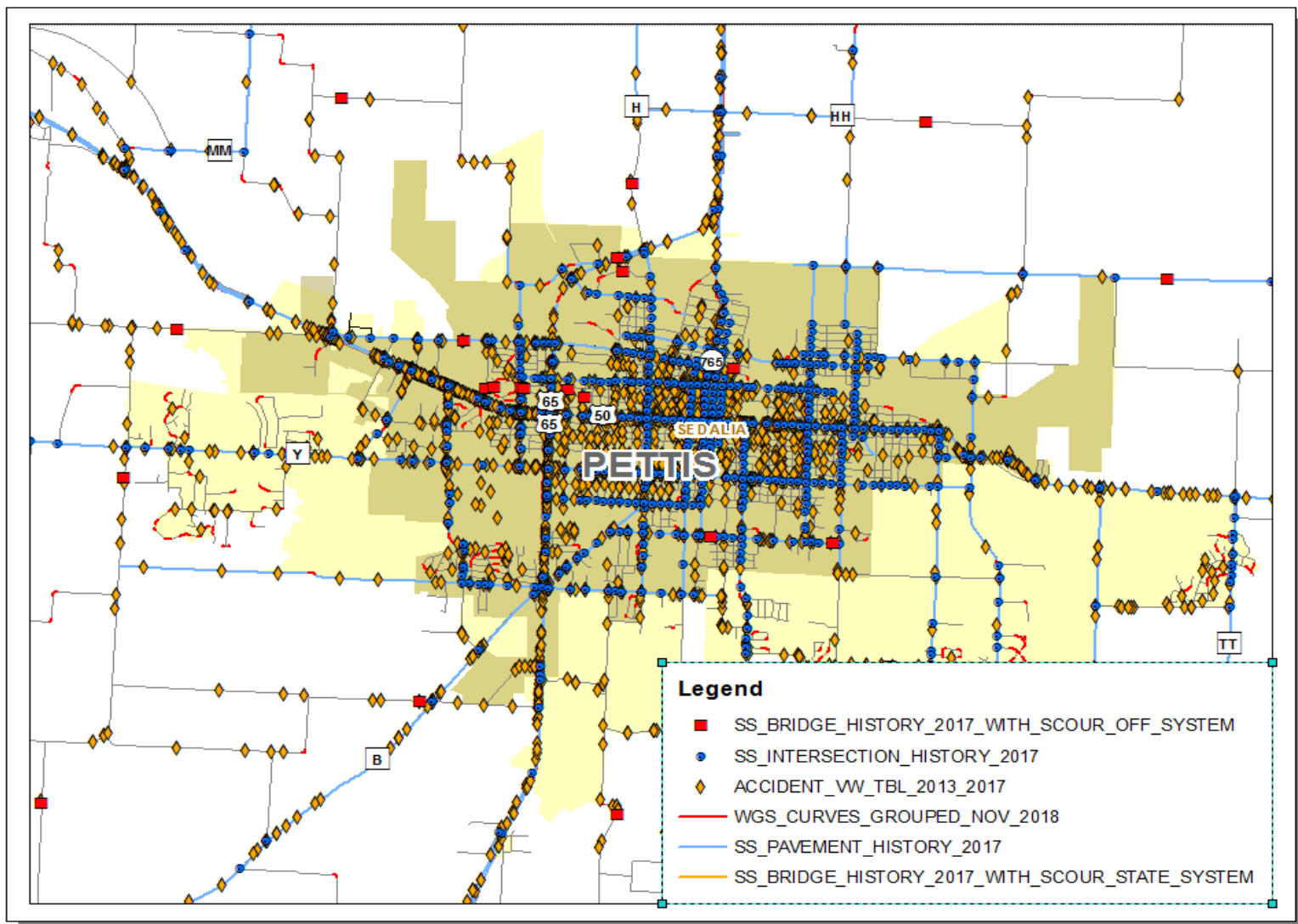


# Demo



- Crash Statistics Map
- TMSMaps

# What's included in the annual transportation data?



# Access to TMS



- TMS DataZone Website:
  - Available to external customers:  
<http://datazone.modot.org/>
- Safety Data Access:
  - Contact Mike Henderson or Eva Voss,  
MoDOT Transportation Planning

# Questions?



## MoDOT Transportation Planning:

Myrna Tucker

[myrna.tucker@modot.mo.gov](mailto:myrna.tucker@modot.mo.gov)

Darrell Knierim

[darrell.knierim@modot.mo.gov](mailto:darrell.knierim@modot.mo.gov)