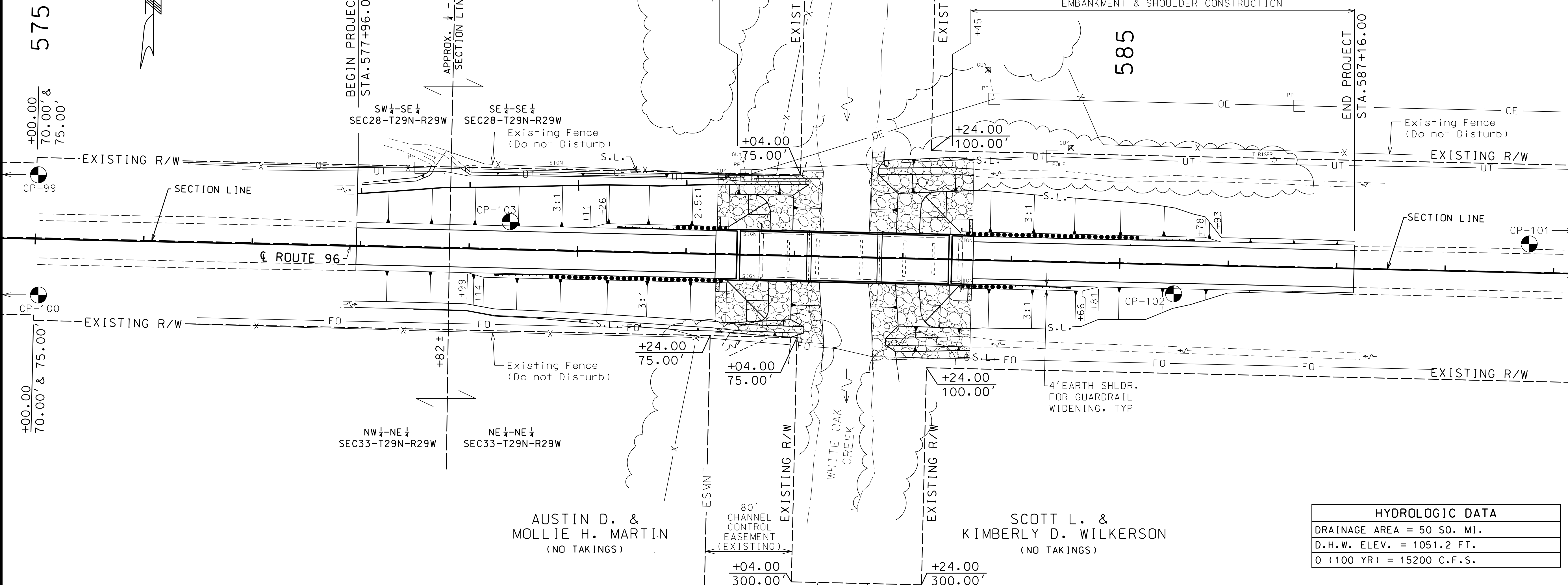


EDWIN L. &  
GLENDA K. ARNER  
(NO TAKINGS)

GRASSLANDS CONSULTANTS  
(NO TAKINGS)

GUARDRAIL, DRAIN FLUME, PAVEMENT,  
EMBANKMENT & SHOULDER CONSTRUCTION

GUARDRAIL, DRAIN FLUME, PAVEMENT,  
EMBANKMENT & SHOULDER CONSTRUCTION



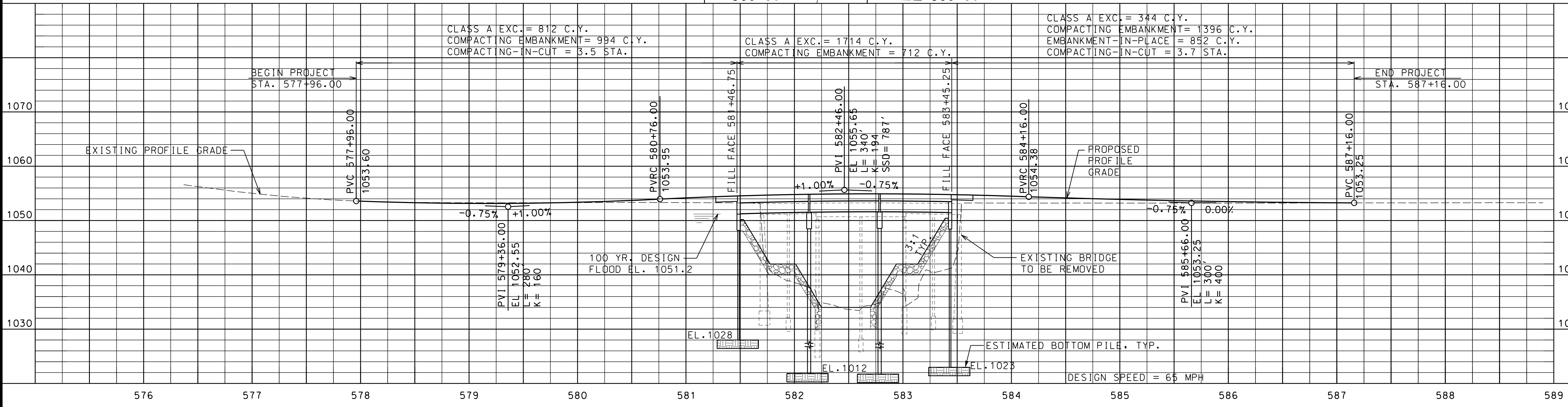
SW 1/4-SE 1/4  
SEC28-T29N-R29W

NW 1/4-NE 1/4  
SEC33-T29N-R29W

AUSTIN D. &  
MOLLIE H. MARTIN  
(NO TAKINGS)

SCOTT L. &  
KIMBERLY D. WILKERSON  
(NO TAKINGS)

HYDROLOGIC DATA	
DRAINAGE AREA =	50 SQ. MI.
D.H.W. ELEV. =	1051.2 FT.
Q (100 YR) =	15200 C.F.S.



CLASS A EXC. = 812 C.Y.  
COMPACTING EMBANKMENT = 994 C.Y.  
COMPACTING-IN-CUT = 3.5 STA.

CLASS A EXC. = 1714 C.Y.  
COMPACTING EMBANKMENT = 712 C.Y.

CLASS A EXC. = 344 C.Y.  
COMPACTING EMBANKMENT = 1396 C.Y.  
EMBANKMENT-IN-PLACE = 852 C.Y.  
COMPACTING-IN-CUT = 3.7 STA.

ROUTE	96	STATE	MO
DISTRICT	SW	SHEET NO.	4
COUNTY	JASPER		
JOB NO.	J7S3171		
CONTRACT ID.			
PROJECT NO.			
BRIDGE NO.	A8873		

DATE	DESCRIPTION

MISSOURI HIGHWAYS AND TRANSPORTATION  
COMMISSION

105 WEST CAPITOL  
JEFFERSON CITY, MO 65102  
1-888-ASK-MODOT (1-888-273-6636)

P.O. Box 236  
Liberty, Missouri 64069  
816-781-6182  
865-241-8011 (WATS)  
816-781-0643 (FAX)

**VENSTRA & KIMM, INC.**  
Certificate of Authority No. F00362673