

Missouri Department of Transportation

2002

District 6
Traffic Volume Map

Prepared by:

Missouri Department of Transportation
Transportation Planning

2217 St. Mary's Blvd.
Jefferson City, MO 65109
Phone (573) 526-8058
Fax (573) 526-8052

www.modot.org

This report contains information that is protected from disclosure by federal law, 23 USC Section 409 and the Missouri Open Records Law (Sunshine Act), Section 610.021 RSMo. Please review MoDOT's policy and procedure manual on the Sunshine Act before releasing any of the information contained herein.



AADT = Average Annual Daily Traffic

Note: Traffic Volumes Represent Estimated Average Daily Traffic

Note: Truck Volumes Shown on Map Represent the 2002 Average Daily Traffic and Have Not Been Seasonally Adjusted.

Legend

Point of Count

- Interstate
- US Routes
- MO Routes
- RT, Spur and Alternate Routes
- Business Routes and Loops

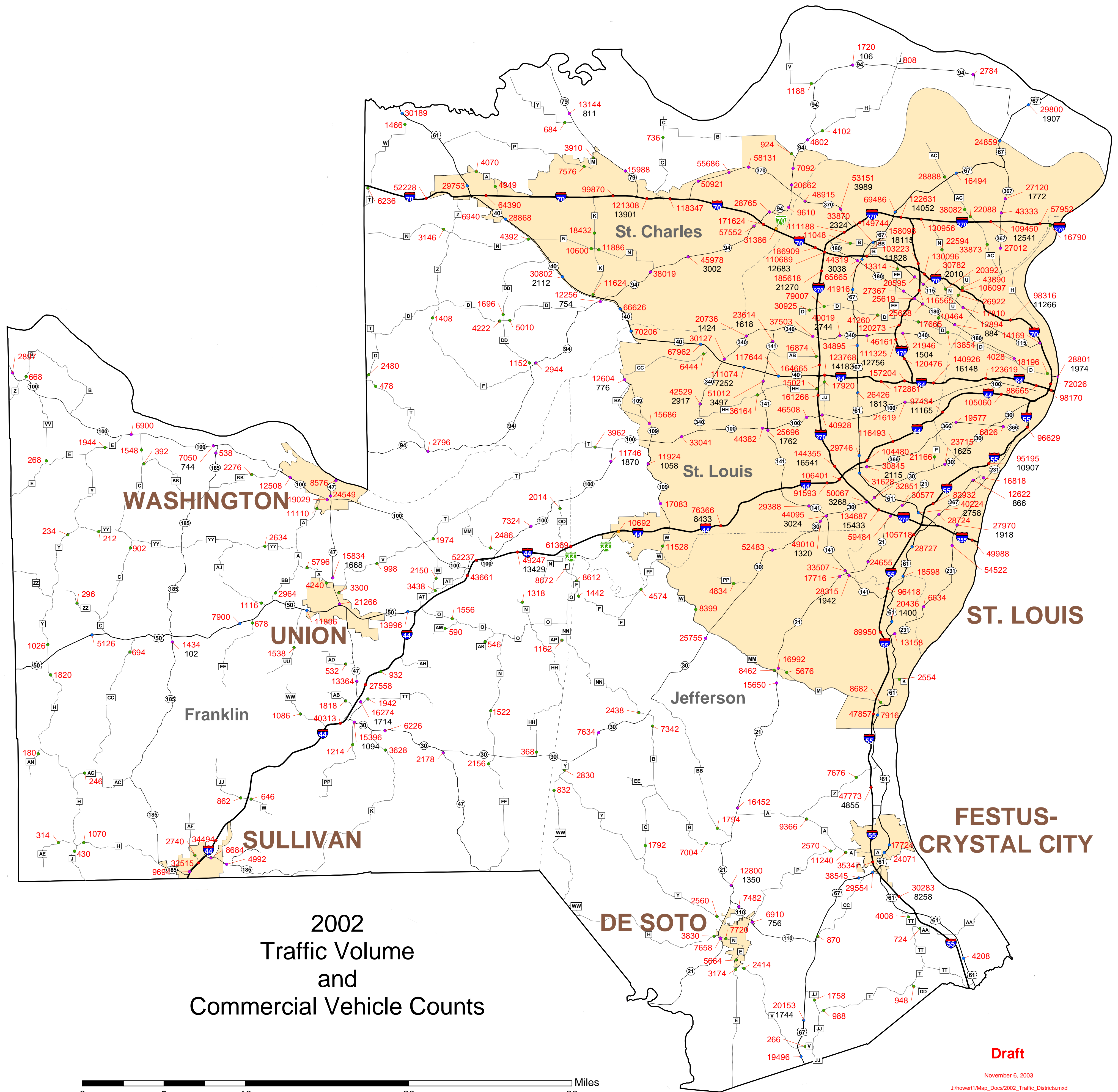
23462 Traffic Volume (AADT)

1673 Truck Volume

Urban Areas

Counties

2002
Traffic Volume
and
Commercial Vehicle Counts



Draft

November 6, 2003

J:\howert1\Map_Docs\2002_Traffic_Districts.mxd