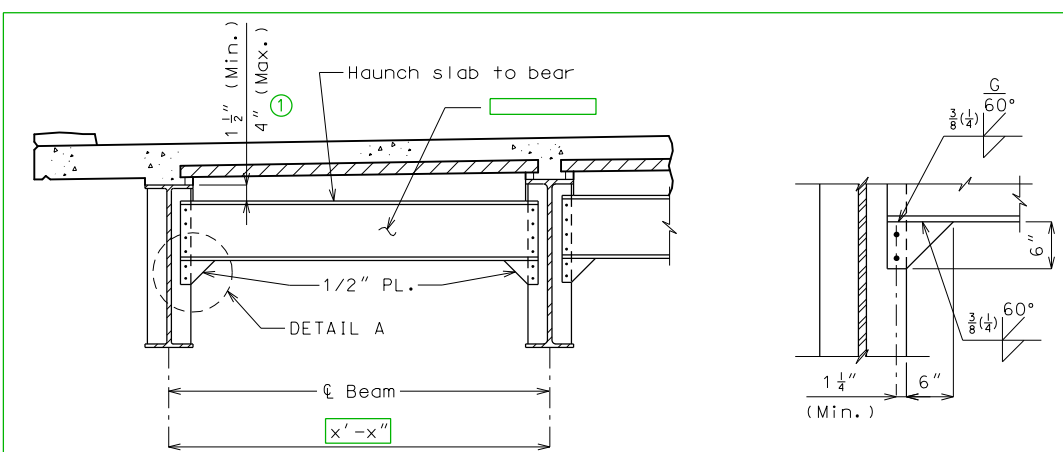


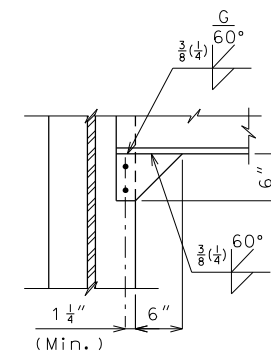
TYPICAL PART SECTION SHOWING END DIAPHRAGMS

(W21 thru W24) Omit this detail if End Diaphragms (slab haunched to bear) are not used.



TYPICAL PART SECTION SHOWING END DIAPHRAGMS

(W27 thru W40) Omit these details if End Diaphragms (slab haunched to bear) are not used.



DETAIL A

Standard Drawing Guidance (do not show on plans):

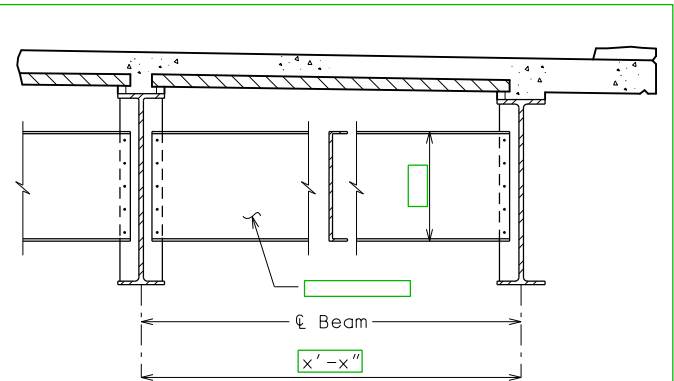
Angle size should be shown without inch (") marks on the plans.

Do not show fillet weld size unless by design and size of weld exceeds Sec 1080.

Show specialty welds information as given unless by design.

Delete panels for CIP slab.

① Modify if necessary in accordance with EPG 751.14.5.3.



TYPICAL PART SECTION SHOWING CROSS FRAMES AND INTERMEDIATE DIAPHRAGMS

Replace this detail with alternate details if flange connection angle is required by design.

DATE PREPARED

8/1/2022

ROUTE STATE

* MO

DISTRICT SHEET NO.

BR *

COUNTY

* JOB NO.

* CONTRACT ID.

PROJECT NO.

BRIDGE NO.

DIA11

DESCRIPTION

DATE

MISSOURI HIGHWAYS AND TRANSPORTATION COMMISSION

105 WEST CAPITOL

JEFFERSON CITY, MO 65102

1-888-ASK-MODOT (1-888-275-6636)

MODOT

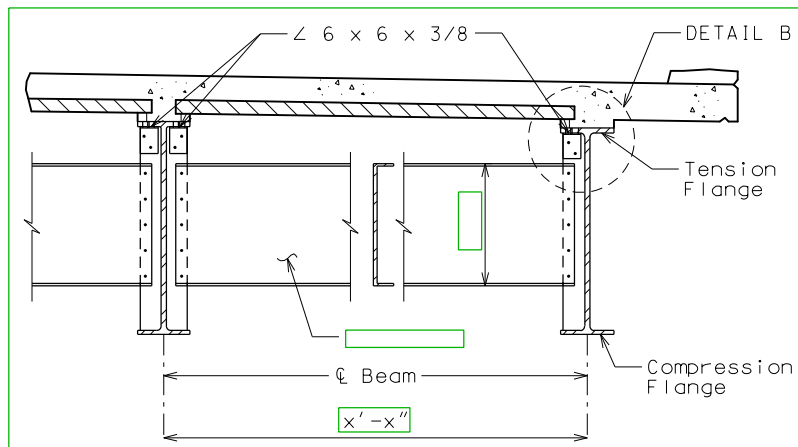
IF A SEAL IS PRESENT ON THIS SHEET IT HAS BEEN ELECTRONICALLY SEALED AND DATED.

STEEL DIAPHRAGMS

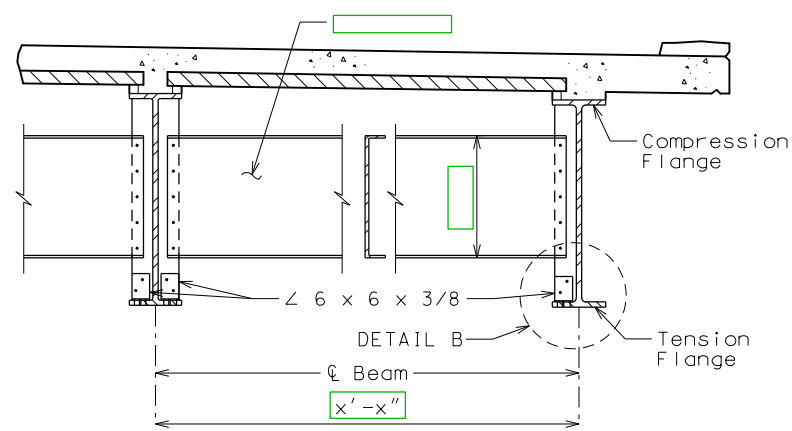
Detailed Checked

Note: This drawing is not to scale. Follow dimensions.

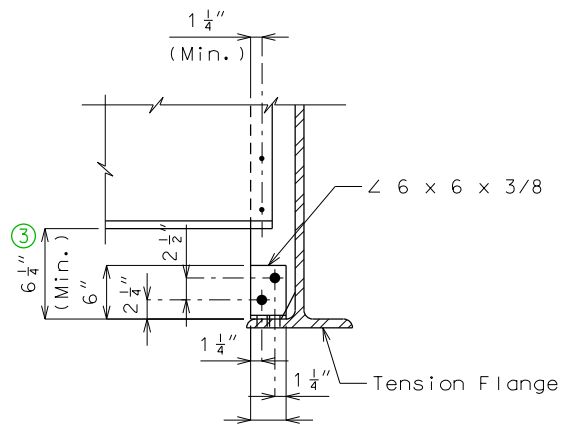
Sheet No. of



TYPICAL PART SECTION SHOWING CROSS FRAMES AND INTERMEDIATE DIAPHRAGMS TOP FLANGE IN TENSION

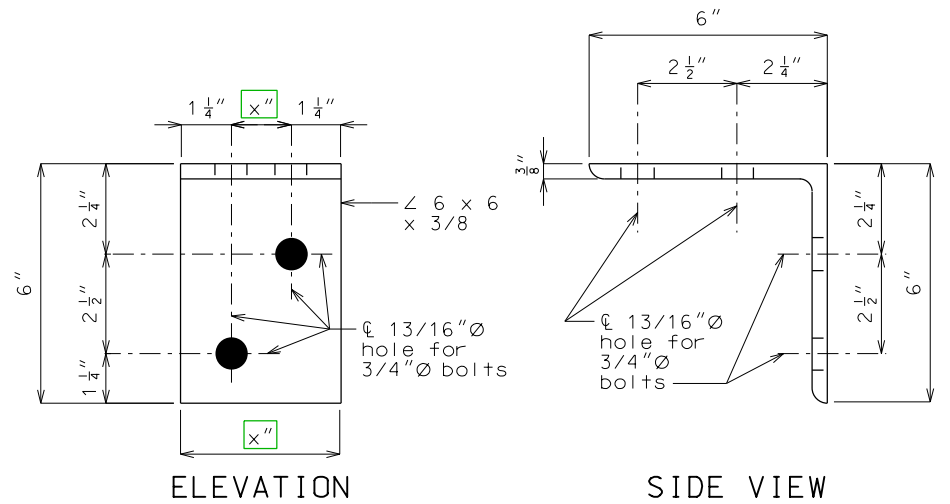


TYPICAL PART SECTION SHOWING INTERMEDIATE DIAPHRAGMS BOTTOM FLANGE IN TENSION



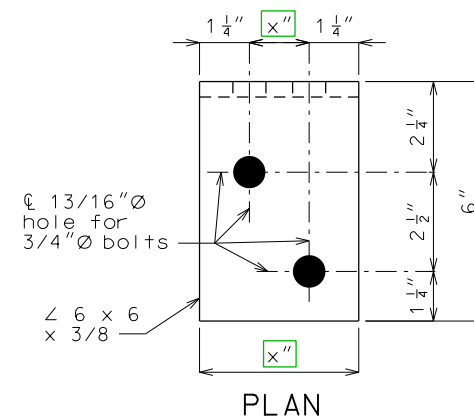
DETAIL B

(Bottom flange shown, top flange similar.)



ELEVATION

SIDE VIEW



PLAN

DETAIL OF FLANGE CONNECTION ANGLE

Note: Bolts shall be 3/4-inch diameter ASTM F3125 Grade A325
 ② Type 1 Type 3 that connect the 6 x 6 x 3/8 angle to the top flange and placed so the nut is on the inside of flange (toward the web).

Use these alternate details if Flange Connection Angle is required by design.

② Use Type 3 for weathering steel bolted connections and Type 1 for painted or galvanized steel connections.

③ Verify clearance for cross slope.