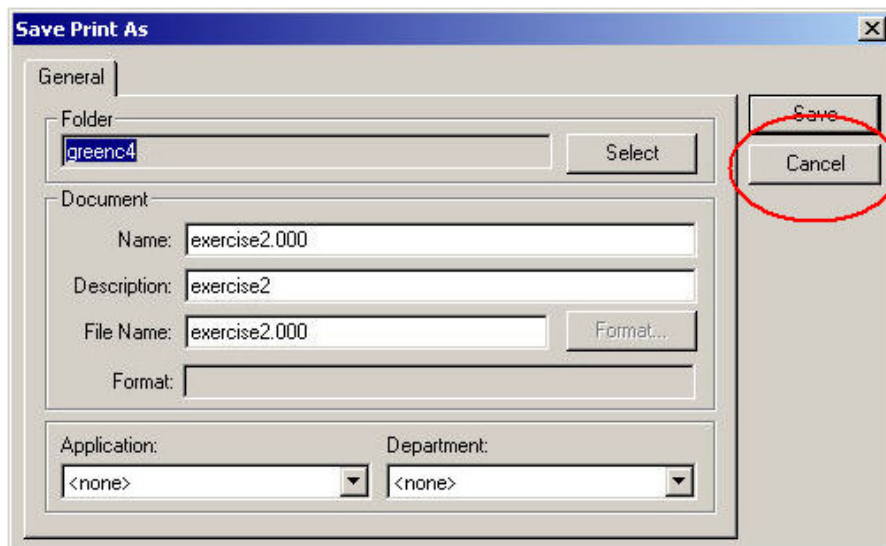
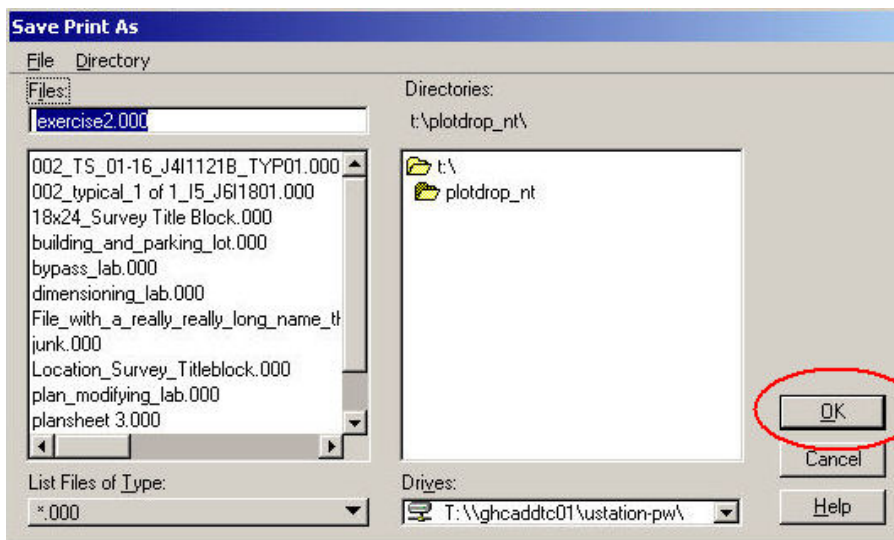


Descartes Plotting – Storing the Plotdrop File

When using the HMR plotting through Descartes, the plot drop file that it creates needs to be created outside of ProjectWise. To do that, do the plotting steps like normal until you get the dialog box that says "**Save Print As**". Here is where you want to click on the "**Cancel**" button to get the plot drop file out of ProjectWise.



Then just navigate to the **T:\plotdrop_nt** folder to store the Descartes plotdrop file.



Then the rest of the HMR plotting routine remains the same.