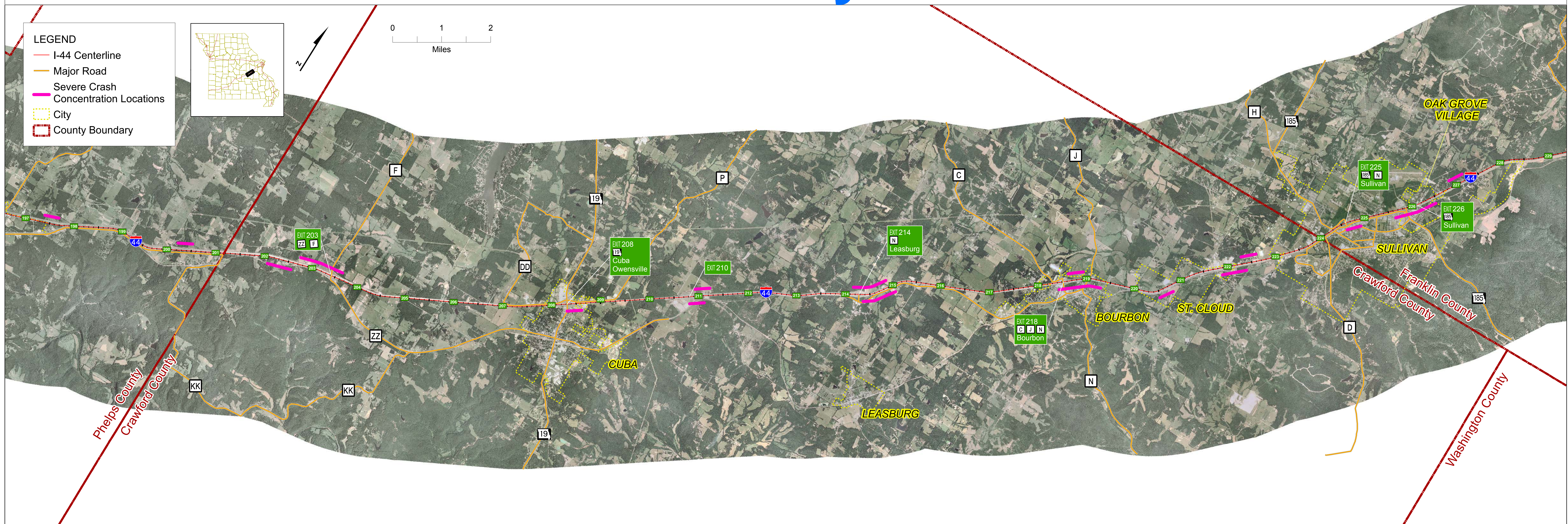


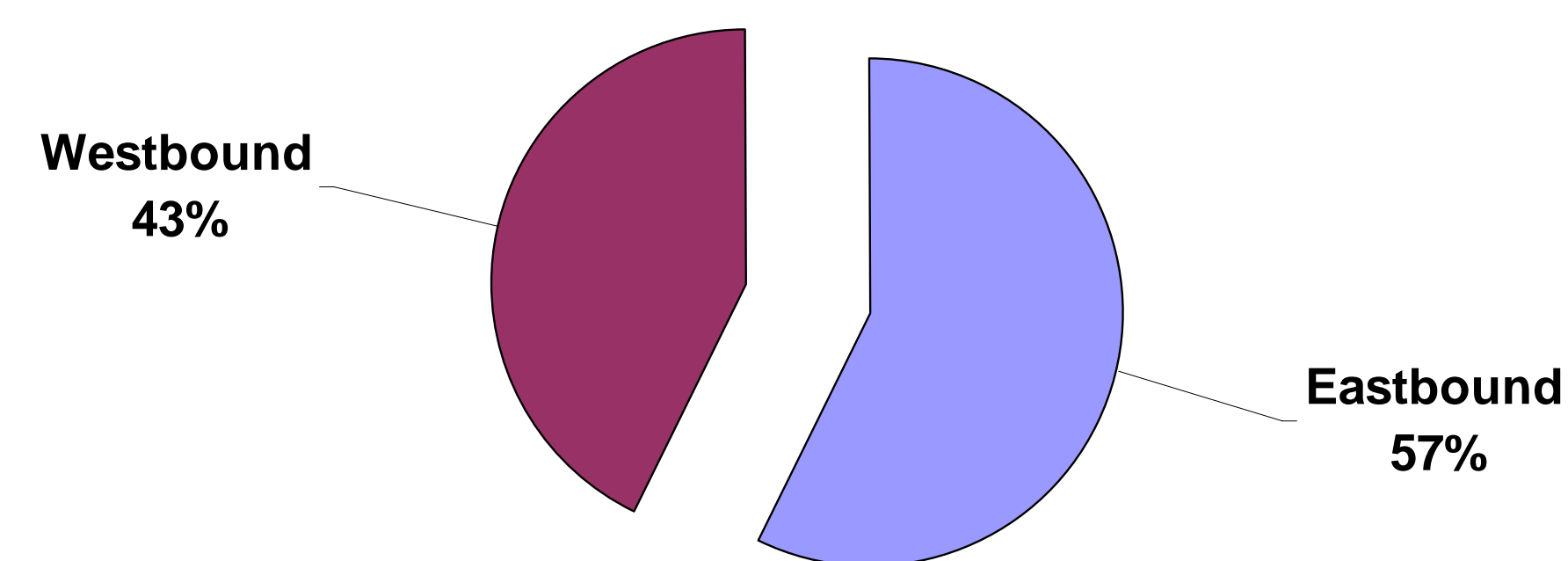
# Crawford County Crash Data



## Prevailing Types of Crashes in Crawford County

1. Out of Control  
*Crashes where vehicle contacts a fixed object or ran off the road*
2. Rear End
3. Other  
*Crashes where vehicle contacts "other object"*

### Crawford County Directional Crash Summary



#### Crash Type Analysis

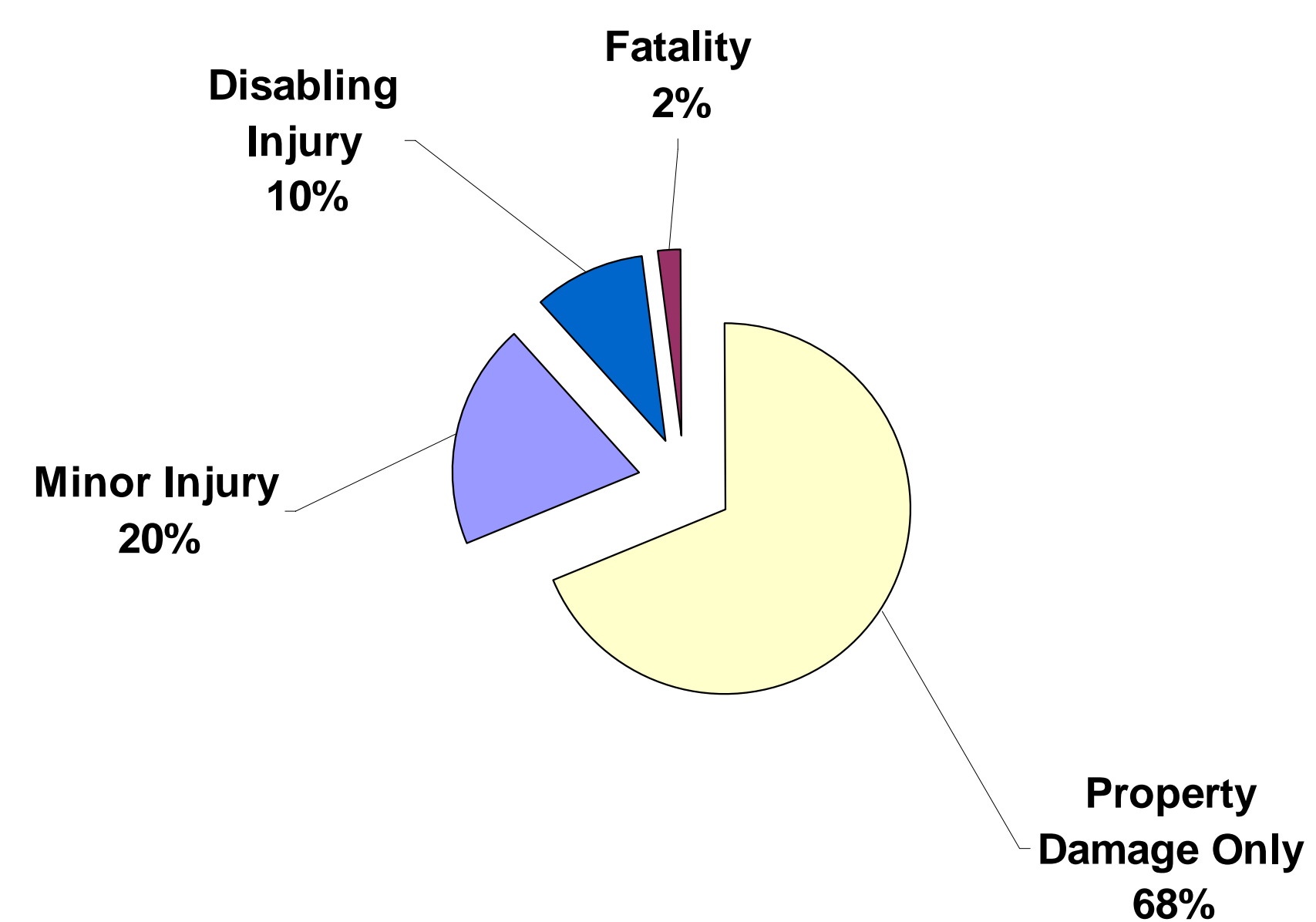
- 57% Eastbound crashes combined with prevailing crash types noted above are indicative of unexpected, sudden stopping or reduced speed related to traffic congestion as motorists approach the urban area of St. Louis.

## Crawford County Crash Rate Summary

	Crawford County	I-44 Study Corridor	Missouri State Average for Interstates
All Crashes	81.80	84.38	113.02
Property Damage Only	59.63	62.61	84.13
Minor Injury	14.21	15.02	28.02
Disabling Injury	6.82	5.46	
Fatality	1.13	1.28	0.87

Source: MoDOT TMS, 2001 - 2005. All Rates Expressed in Number of Crashes per Hundred Million Vehicle Miles Traveled. Red Text Indicates Rates Higher Than State Average for Similar Facilities.

### Crawford County Crash Severity Summary

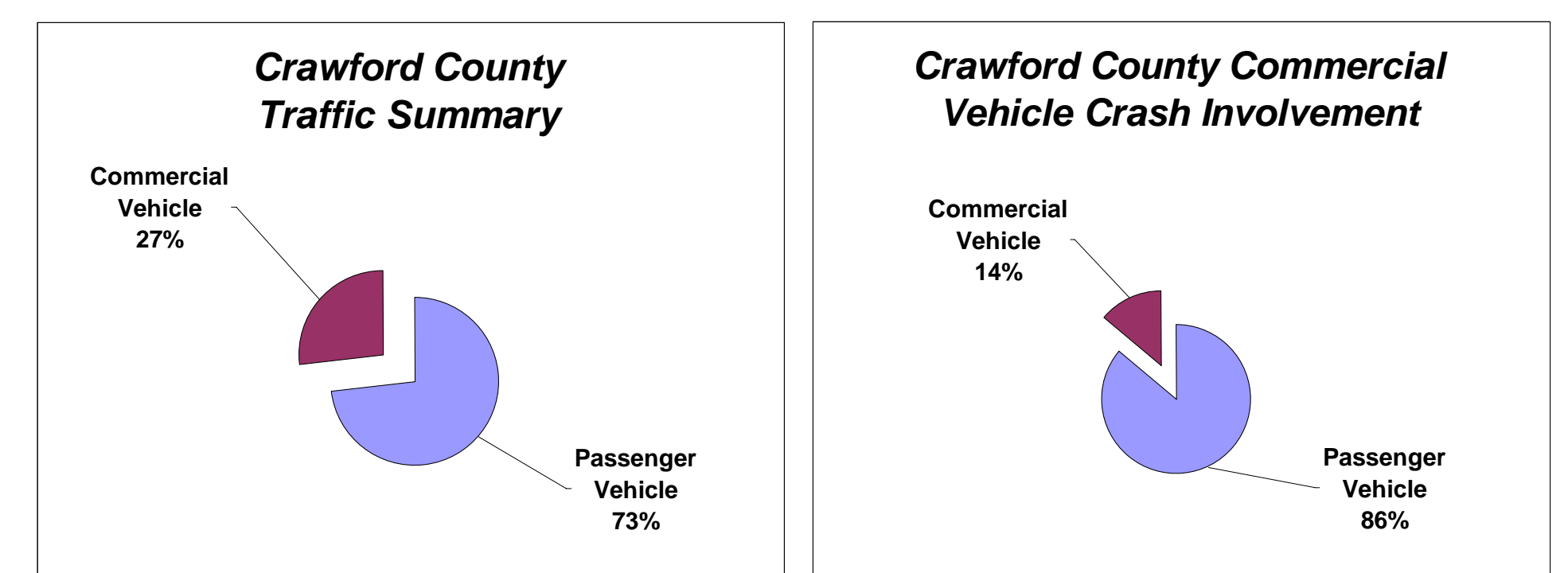


#### Crash Rate and Severity Analysis

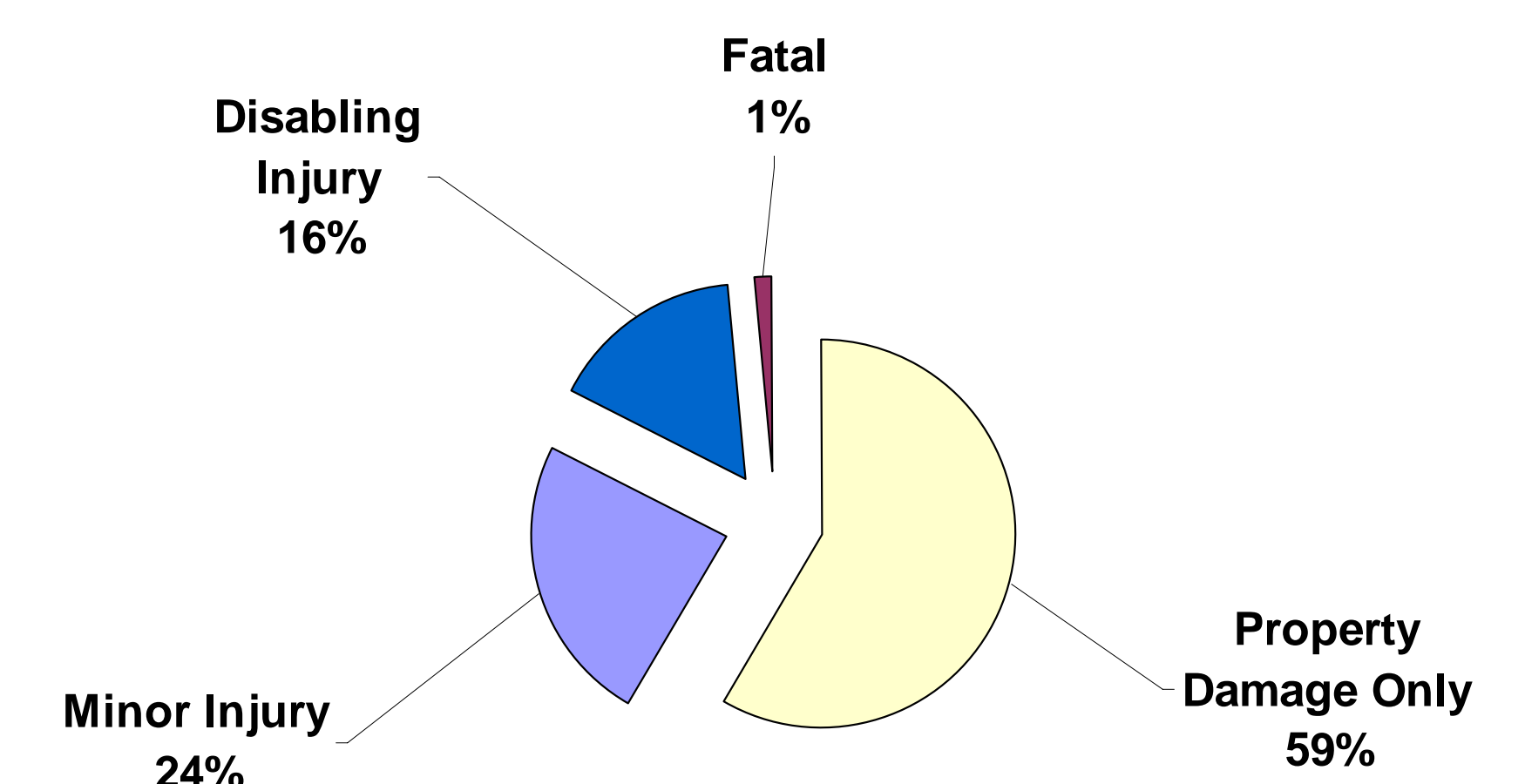
- Crawford County and the I-44 Study Corridor's Fatality Rate is higher than the Missouri State Average for Interstates.

## Commercial Vehicle Crashes in Crawford County

Crashes in which at least one vehicle involved was a commercial vehicle



### Crawford County Commercial Vehicle Crash Severity Summary



#### Commercial Vehicle Crash Analysis

- Commercial Vehicles account for 27% of the traffic volume in Crawford County, but are only involved in 14% of the crashes.  
- Commercial Vehicle crashes tend to be more severe than passenger vehicle only crashes.