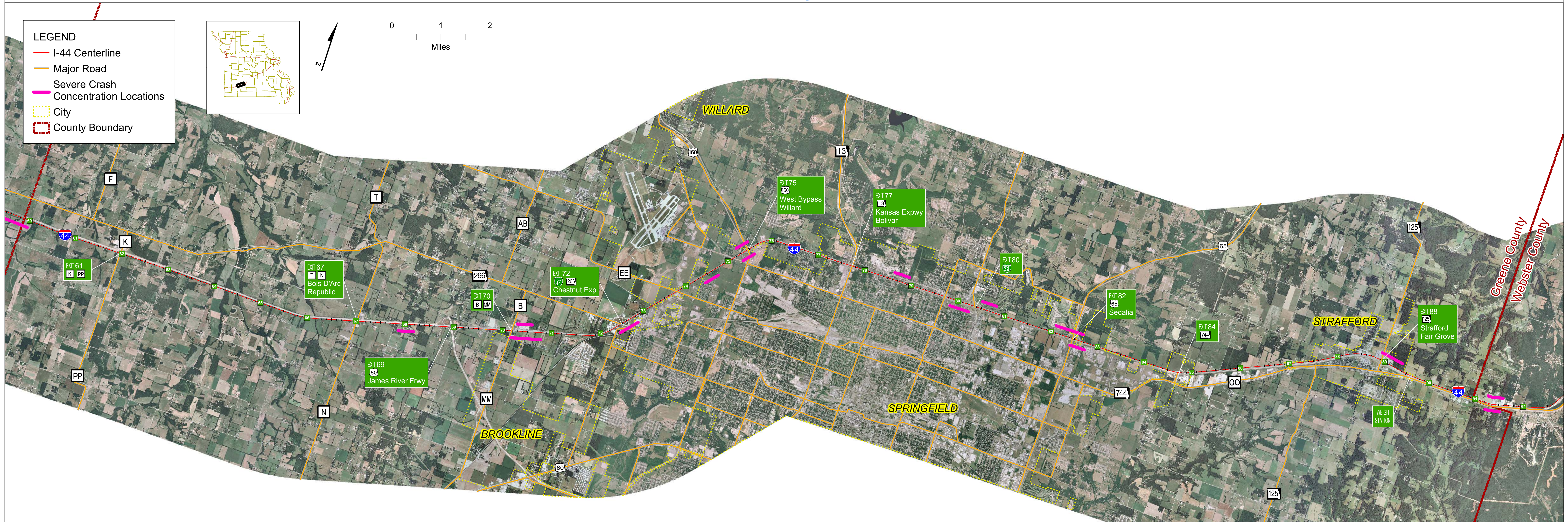
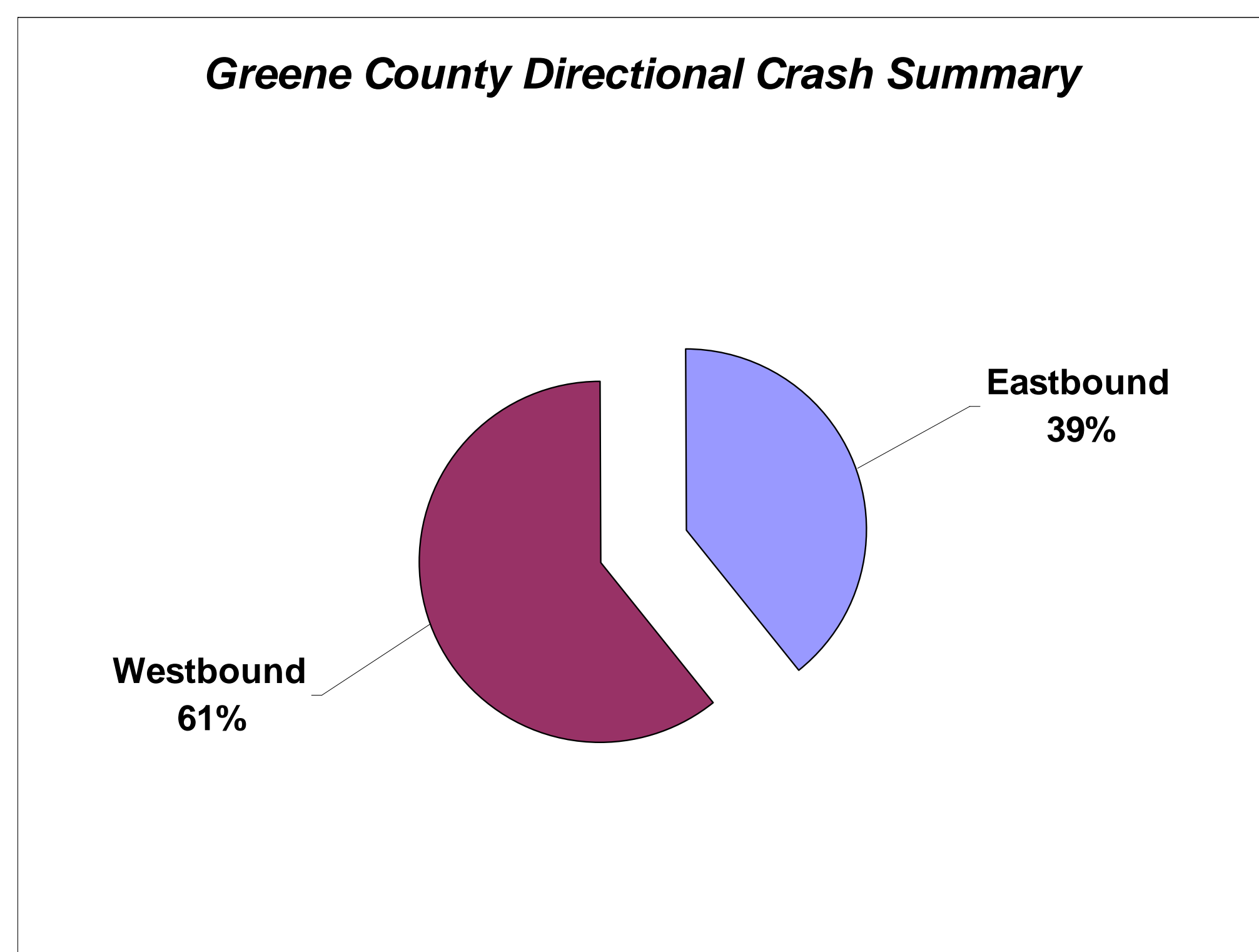


Greene County Crash Data



Prevailing Types of Crashes in Greene County

1. Rear End
2. Out of Control
Crashes where vehicle contacts a fixed object or ran off the road
3. Passing



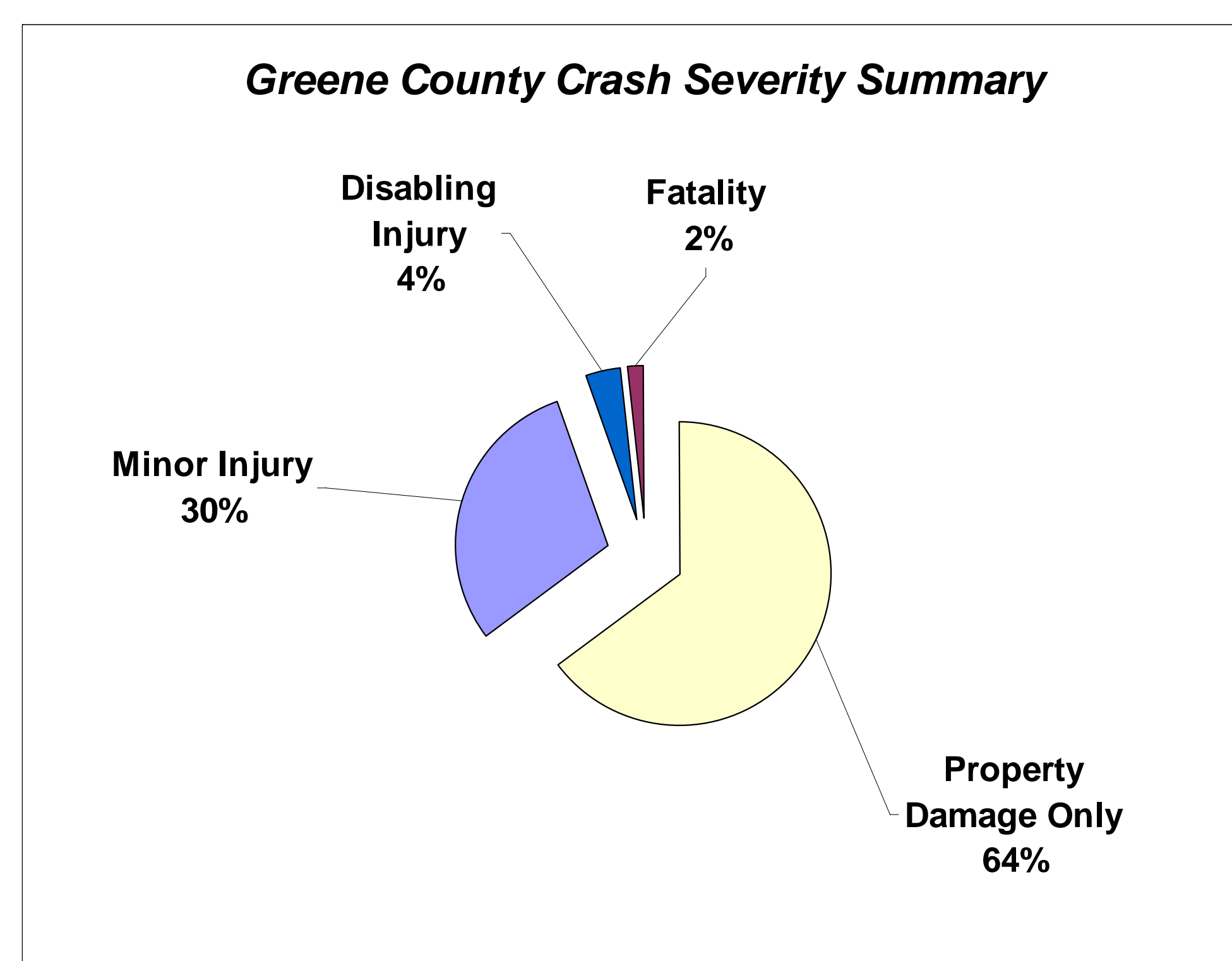
Crash Type Analysis

- 61% Westbound crashes combined with prevailing crash types noted above are indicative of unexpected, sudden stopping or reduced speed related to traffic congestion as motorists approach the urban area of Springfield.

Greene County Crash Rate Summary

	Greene County	I-44 Study Corridor	Missouri State Average for Interstates
All Crashes	81.79	84.38	113.02
Property Damage Only	56.81	62.61	84.13
Minor Injury	20.65	15.02	28.02
Disabling Injury	3.00	5.46	
Fatality	1.33	1.28	0.87

Source: MoDOT TMS, 2001 - 2005. All Rates Expressed in Number of Crashes per Hundred Million Vehicle Miles Traveled. Red Text Indicates Rates Higher Than State Average for Similar Facilities

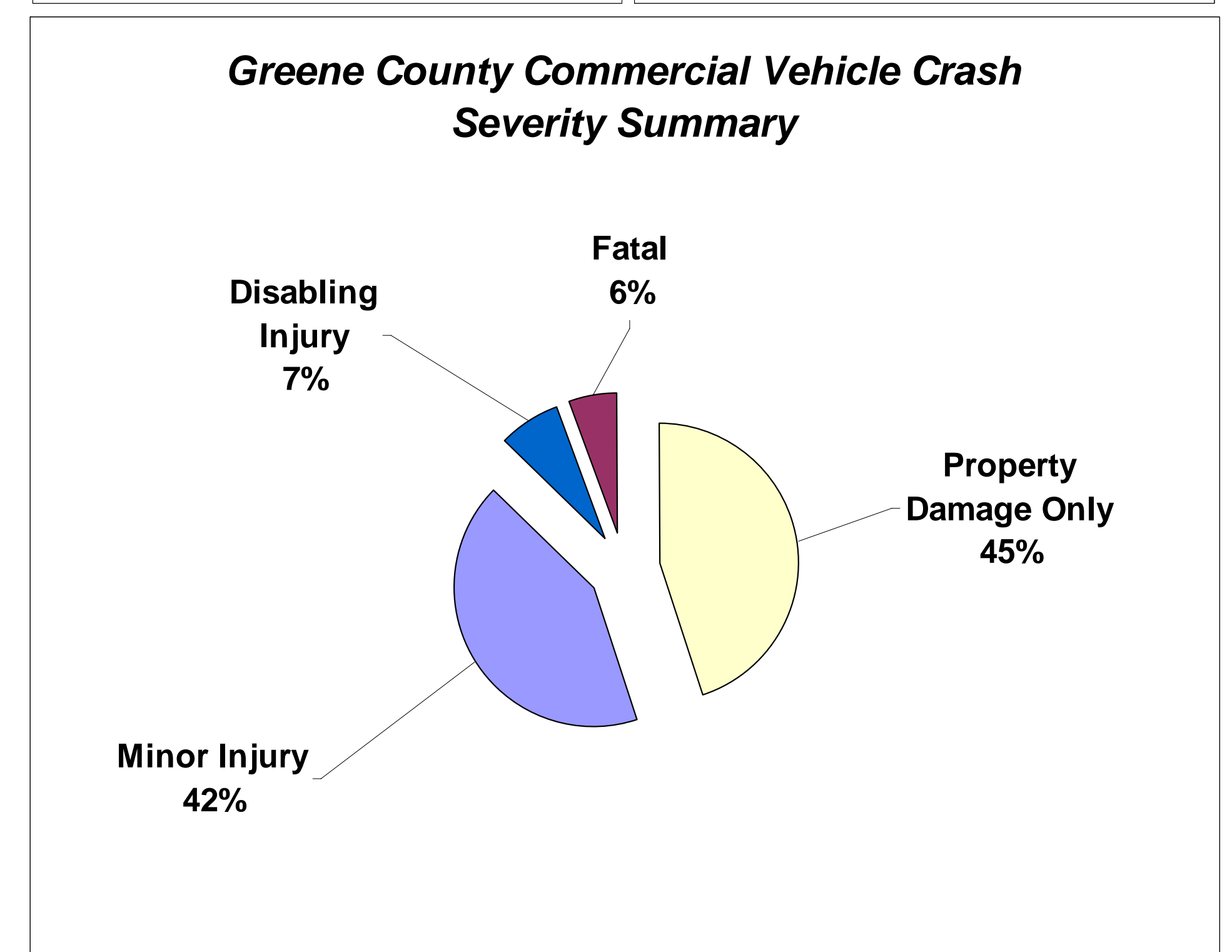
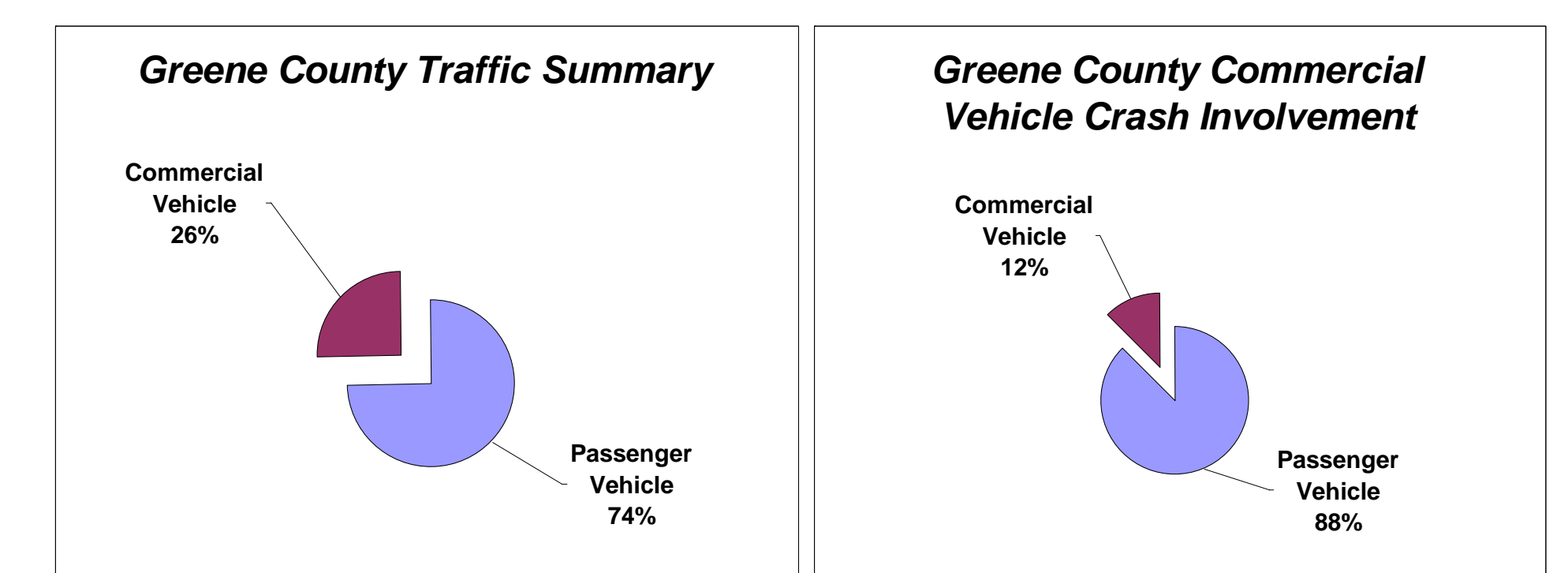


Crash Rate and Severity Analysis

- Greene County and the I-44 Study Corridor's Fatality Rate is higher than the Missouri State Average for Interstates.

Commercial Vehicle Crashes in Greene County

Crashes in which at least one vehicle involved was a commercial vehicle



Commercial Vehicle Crash Analysis

- Commercial Vehicles account for 26% of the traffic volume in Greene County, but are only involved in 12% of the crashes.
- Commercial Vehicle crashes tend to be more severe than passenger vehicle only crashes.