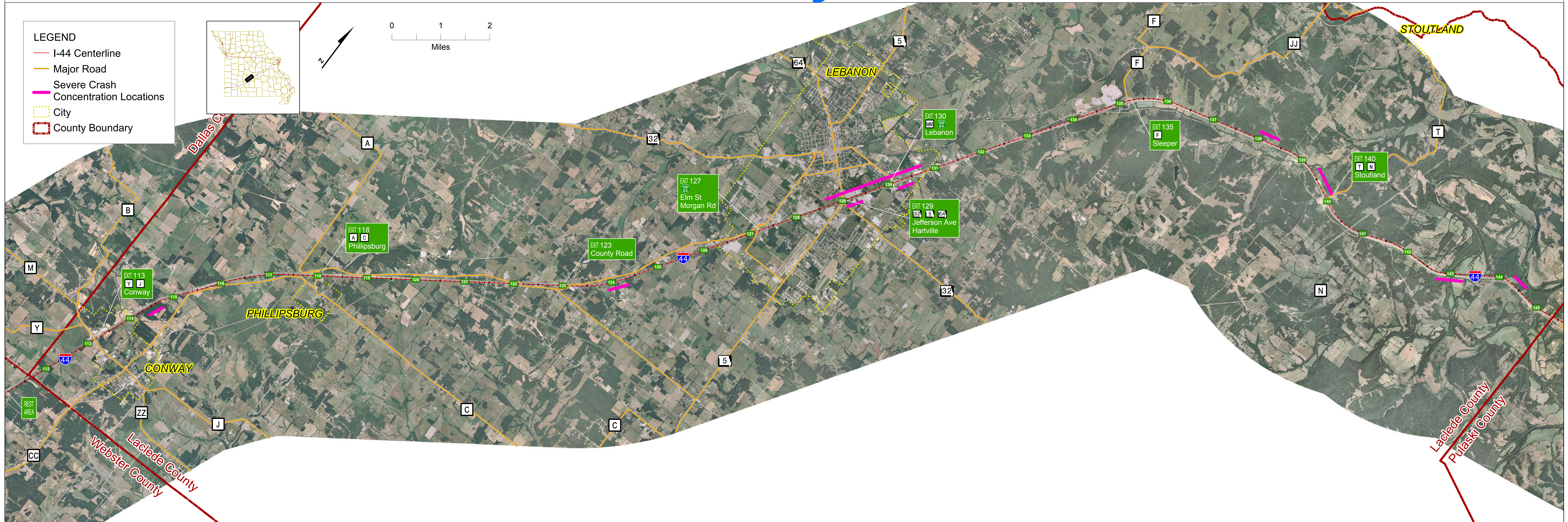


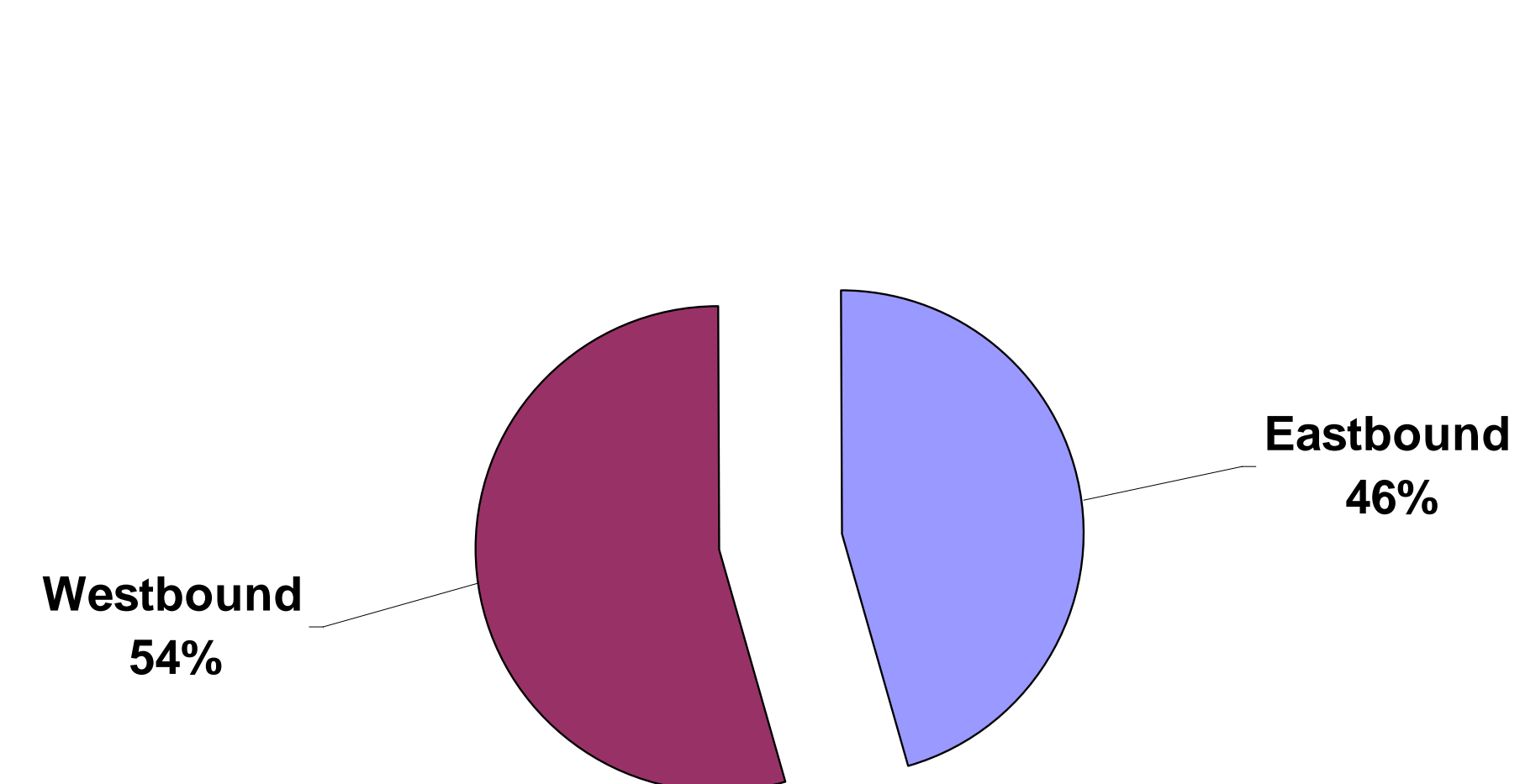
# Laclede County Crash Data



## Prevailing Types of Crashes in Laclede County

1. Out of Control  
*Crashes where vehicle contacts a fixed object or ran off the road*
2. Rear End
3. Other  
*Crashes where vehicle contacts "other object"*

### Laclede County Directional Crash Summary



#### Crash Type Analysis

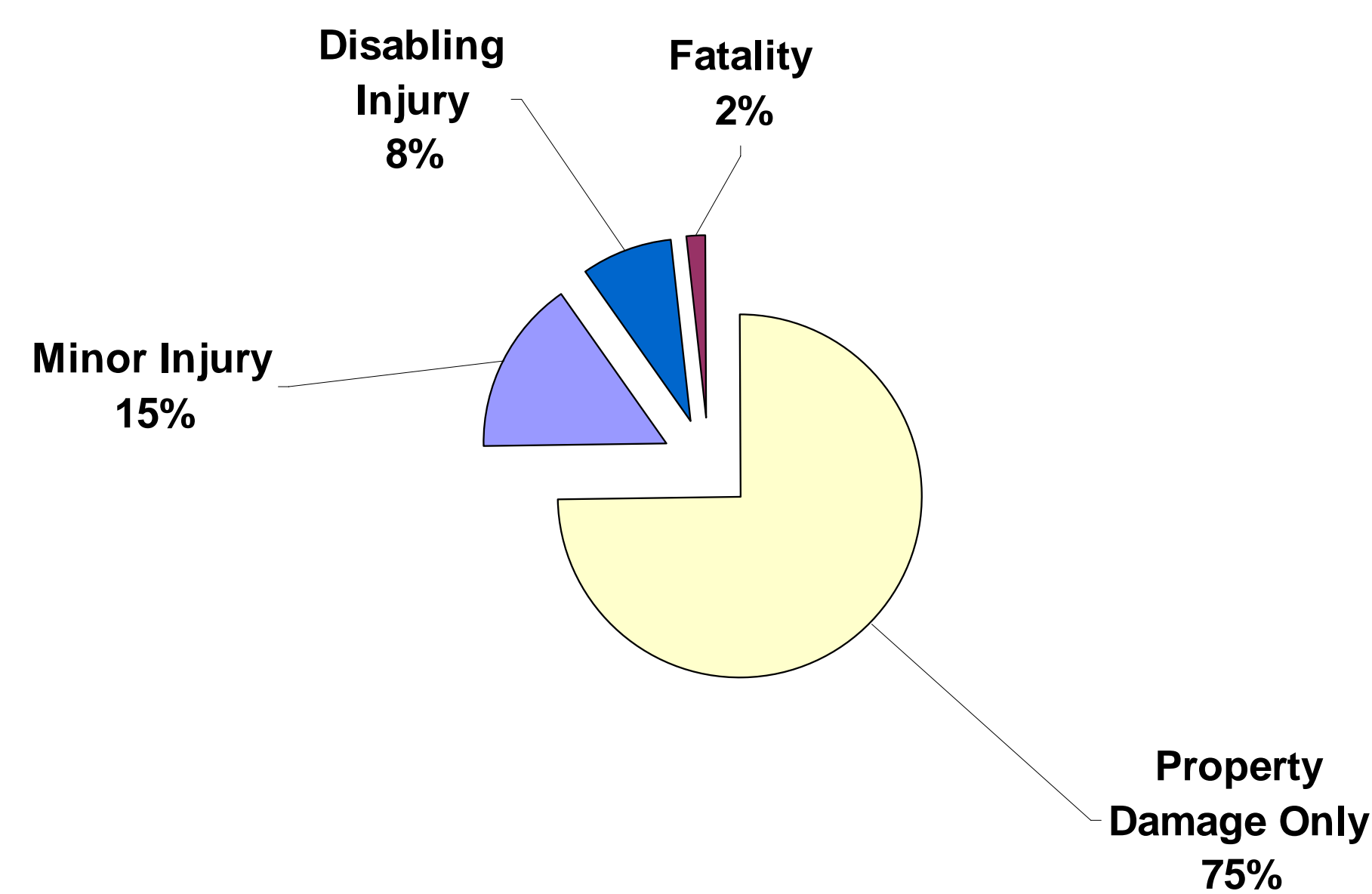
- Prevailing crash types noted above are indicative of unexpected, sudden stopping or reduced speed.

## Laclede County Crash Rate Summary

	Laclede County	I-44 Study Corridor	Missouri State Average for Interstates
All Crashes	69.32	84.38	113.02
Property Damage Only	53.24	62.61	84.13
Minor Injury	9.74	15.02	28.02
Disabling Injury	5.35	5.46	
Fatality	0.99	1.28	0.87

Source: MoDOT TMS, 2001 - 2005. All Rates Expressed in Number of Crashes per Hundred Million Vehicle Miles Traveled  
Red Text Indicates Rates Higher Than State Average for Similar Facilities

### Laclede County Crash Severity Summary

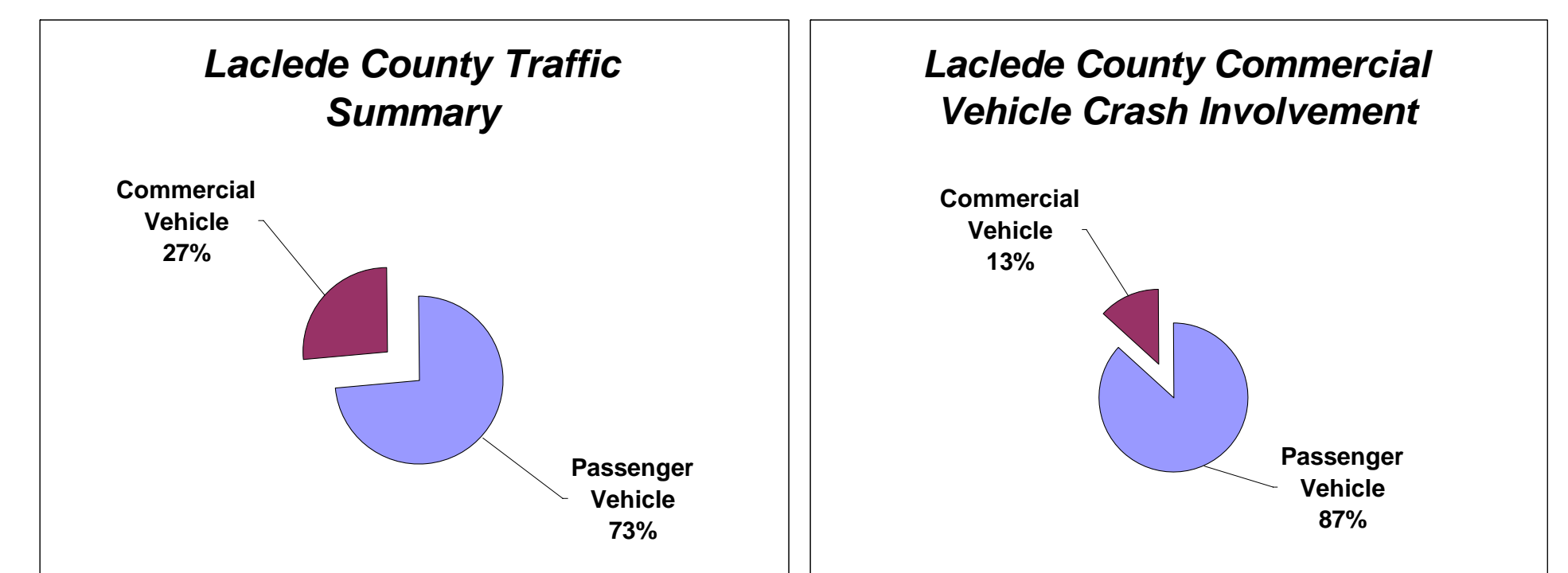


#### Crash Rate and Severity Analysis

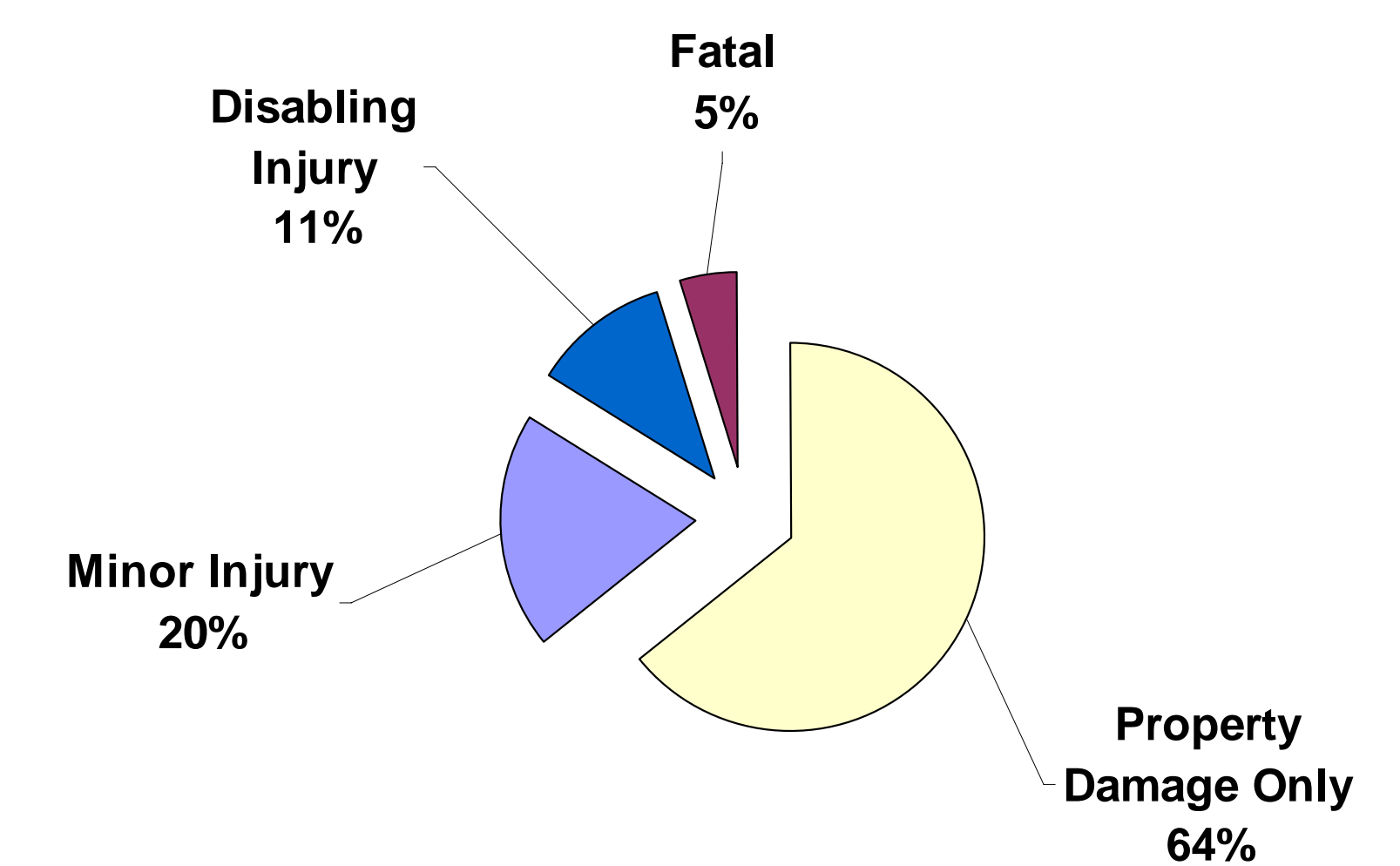
- Laclede County and the I-44 Study Corridor's Fatality Rate is higher than the Missouri State Average for Interstates.

## Commercial Vehicle Crashes in Laclede County

*Crashes in which at least one vehicle involved was a commercial vehicle*



### Laclede County Commercial Vehicle Crash Severity Summary



#### Commercial Vehicle Crash Analysis

- Commercial Vehicles account for 27% of the traffic volume in Laclede County, but are only involved in 13% of the crashes.  
- Commercial Vehicle crashes tend to be more severe than passenger vehicle only crashes.