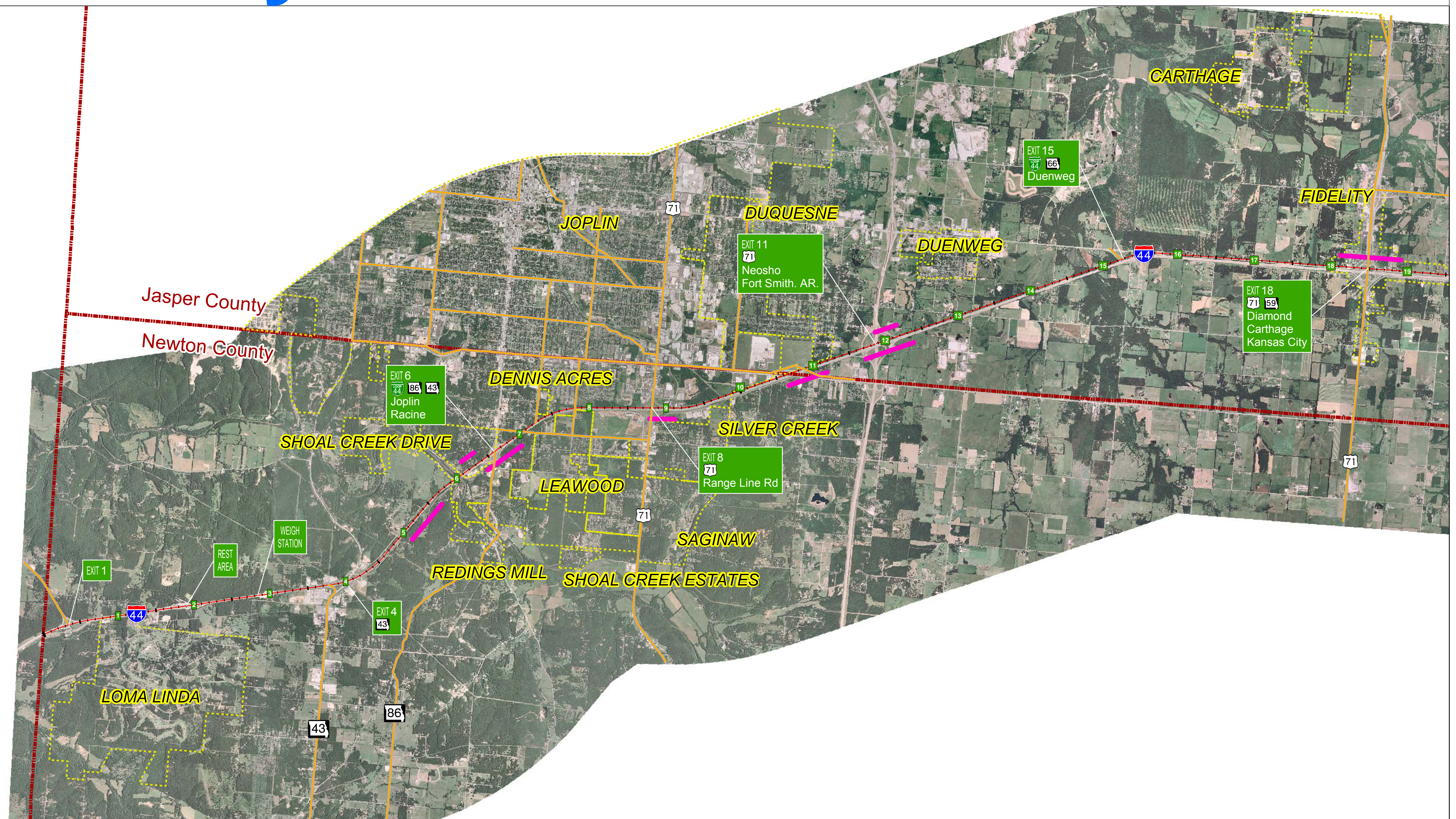
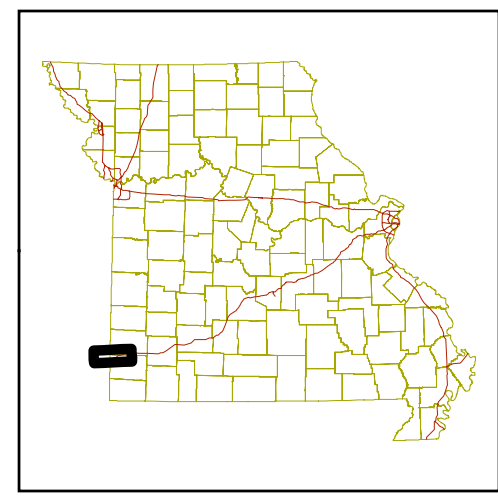


Newton County Crash Data

LEGEND

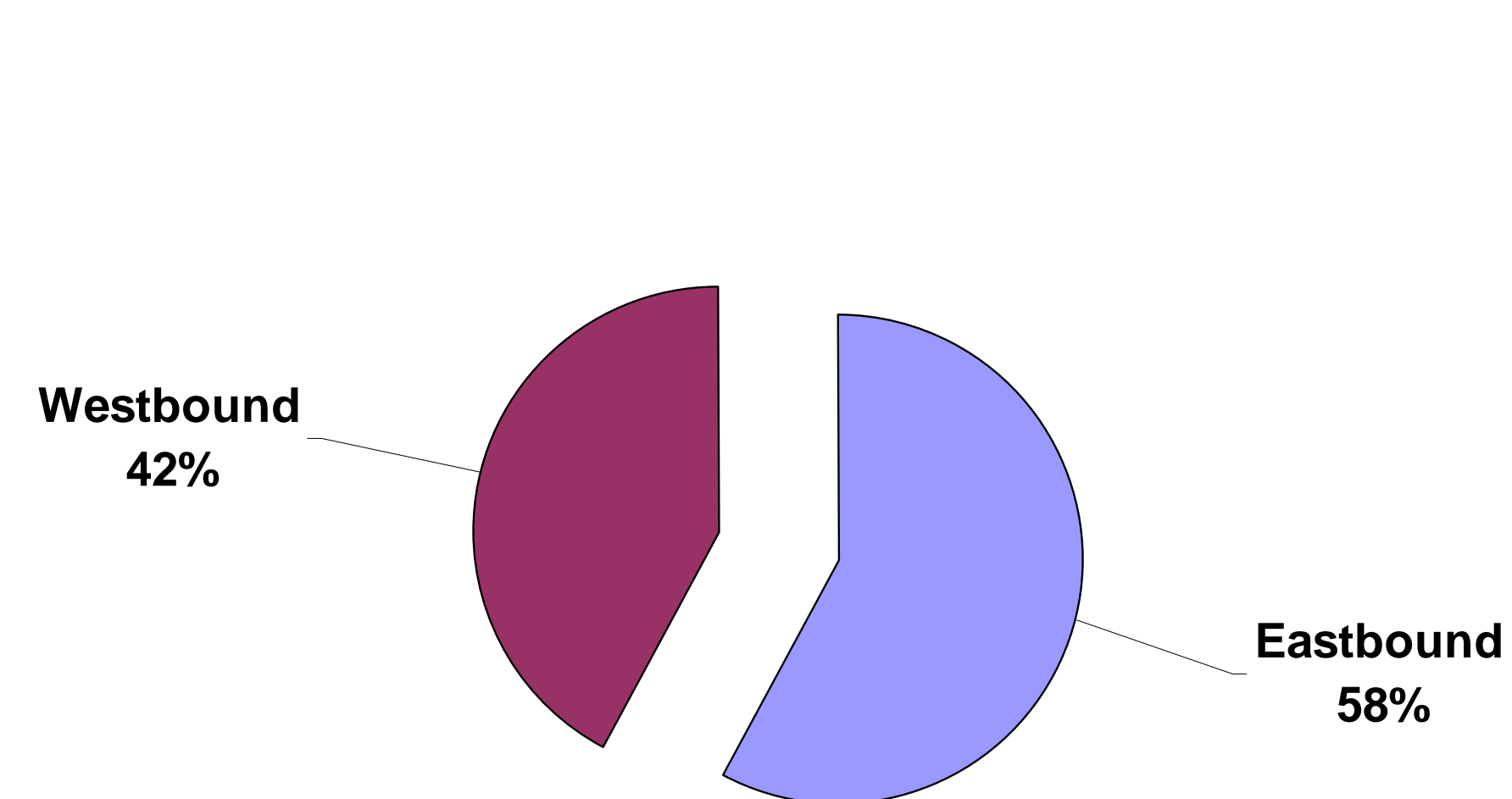
- I-44 Centerline
- Major Road
- Severe Crash
- Concentration Locations
- City
- County Boundary



Prevailing Types of Crashes in Newton County

1. Out of Control
Crashes where vehicle contacts a fixed object or ran off the road
2. Rear End
3. Passing

Newton County Directional Crash Summary



Crash Type Analysis

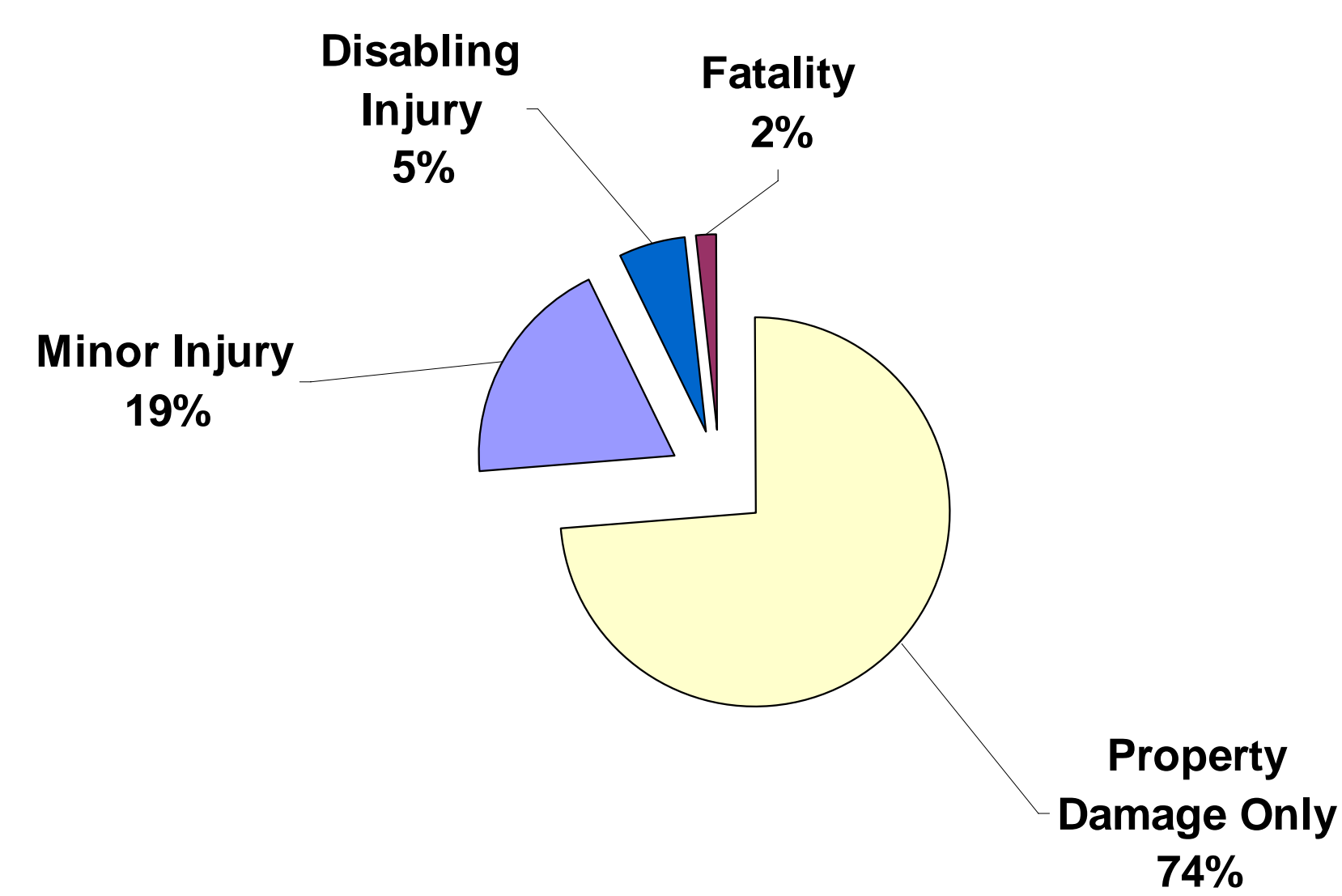
- 58% Eastbound crashes combined with prevailing crash types noted above are indicative of unexpected, sudden stopping or reduced speed related to traffic congestion as motorists approach the urban area of Joplin.
- Westbound traffic has already adapted to the urban setting when entering Newton County.

Newton County Crash Rate Summary

	Newton County	I-44 Study Corridor	Missouri State Average for Interstates
All Crashes	121.57	84.38	113.02
Property Damage Only	88.57	62.61	84.13
Minor Injury	24.95	15.02	28.02
Disabling Injury	5.98	5.46	
Fatality	2.07	1.28	0.87

Source: MoDOT TMS, 2001 - 2005. All Rates Expressed in Number of Crashes per Hundred Million Vehicle Miles Traveled. Red Text Indicates Rates Higher Than State Average for Similar Facilities.

Newton County Crash Severity Summary

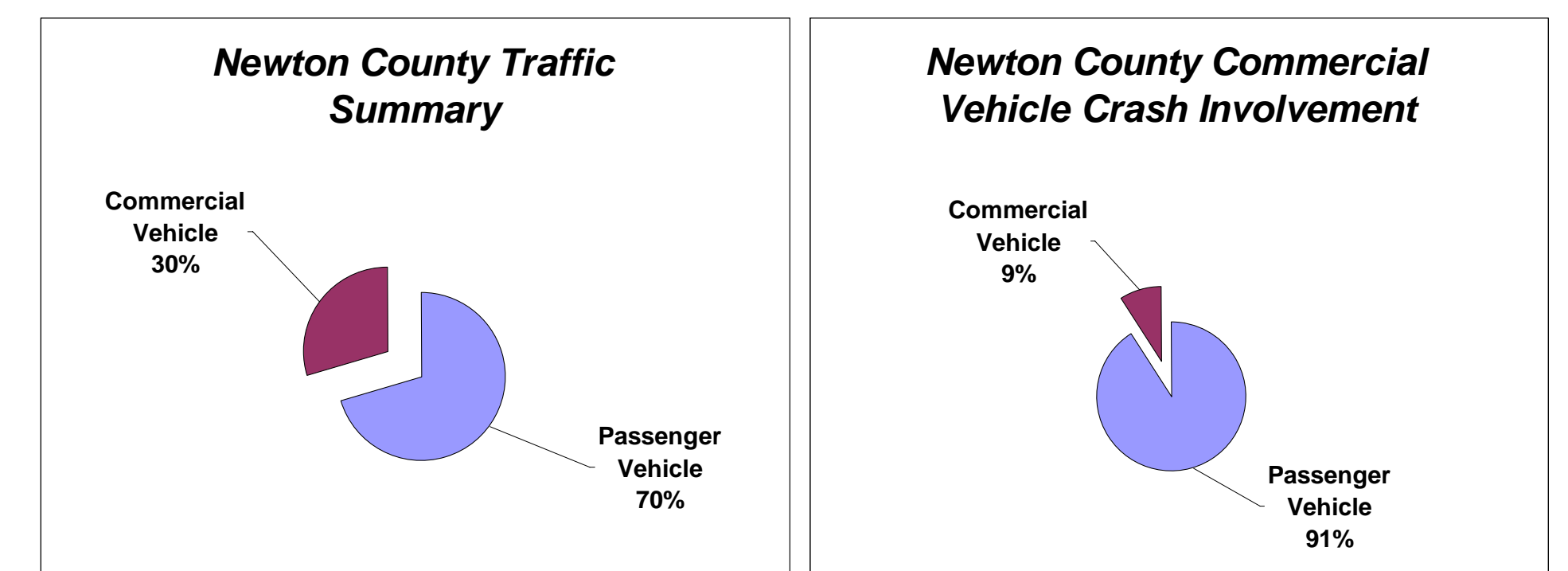


Crash Rate and Severity Analysis

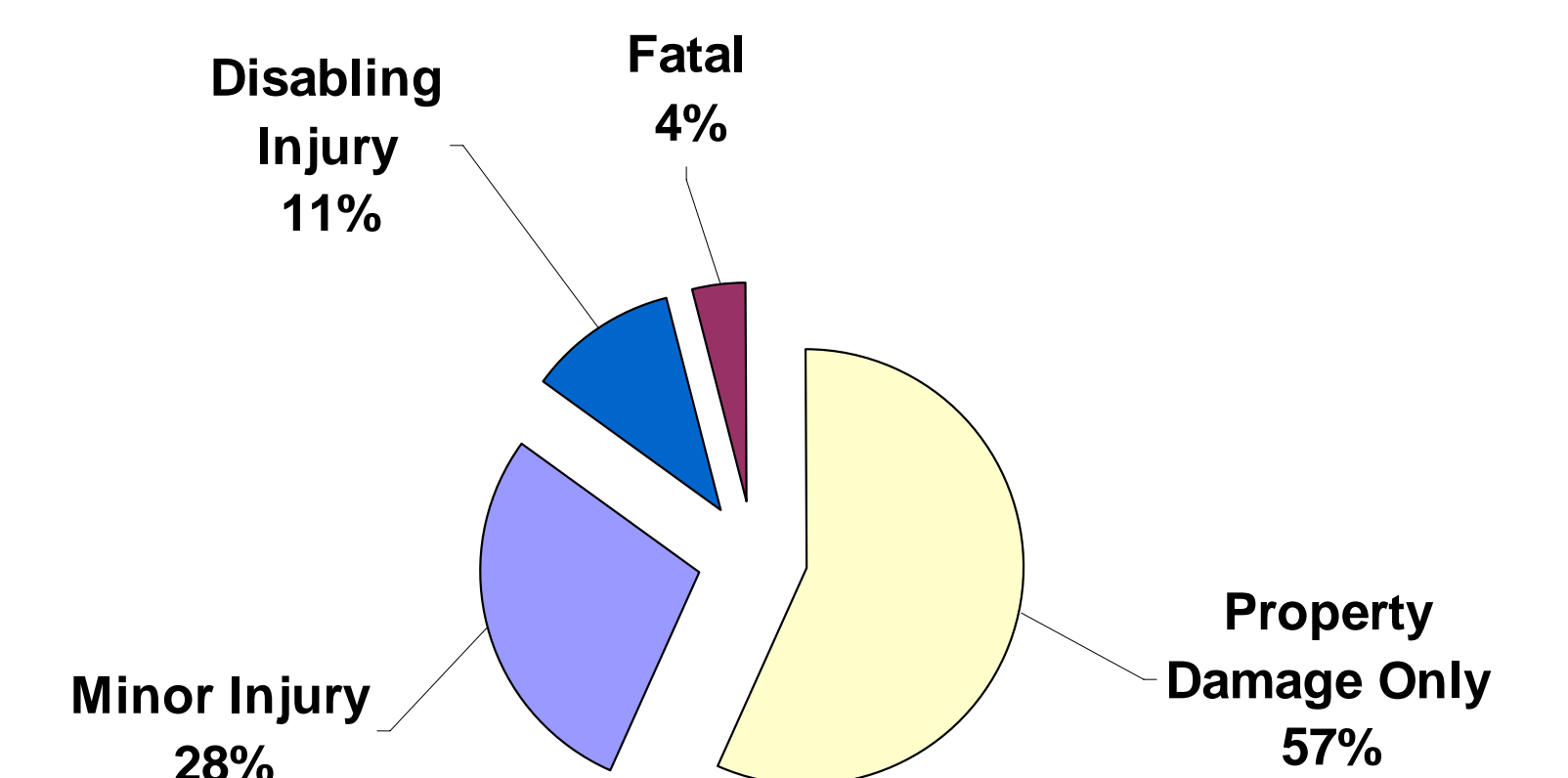
- Newton County's Crash Rate and Property Damage Only Rate exceeds that of the I-44 Study Corridor and the Missouri State Average for Interstates.
- Newton County and the I-44 Study Corridor's Fatality Rate is higher than the Missouri State Average for Interstates.

Commercial Vehicle Crashes in Newton County

Crashes in which at least one vehicle involved was a commercial vehicle



Newton County Commercial Vehicle Crash Severity Summary



Commercial Vehicle Crash Analysis

- Commercial Vehicles account for 30% of the traffic volume in Newton County, but are only involved in 9% of the crashes.
- Commercial Vehicle crashes tend to be more severe than passenger vehicle only crashes.