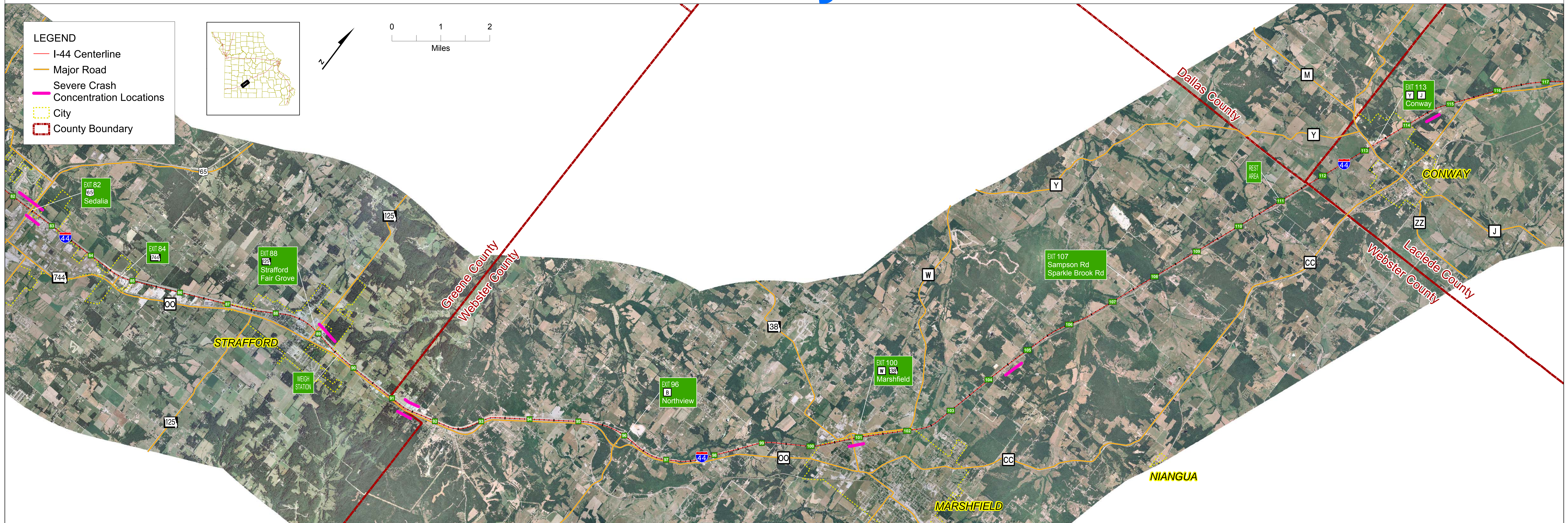


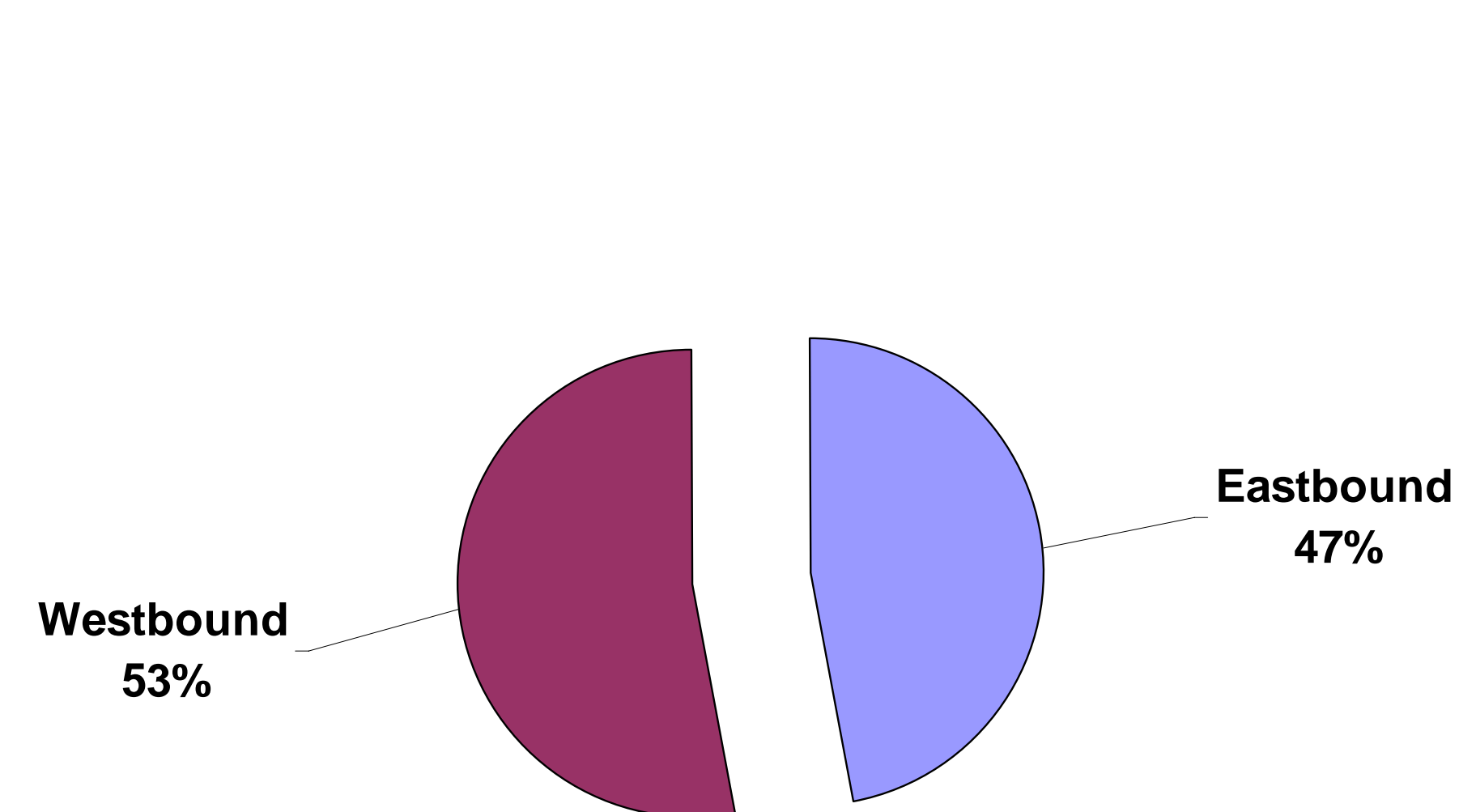
# Webster County Crash Data



## Prevailing Types of Crashes in Webster County

1. Out of Control  
*Crashes where vehicle contacts a fixed object or ran off the road*
2. Rear End
3. Other  
*Crashes where vehicle contacts "other object"*

### Webster County Directional Crash Summary



#### Crash Type Analysis

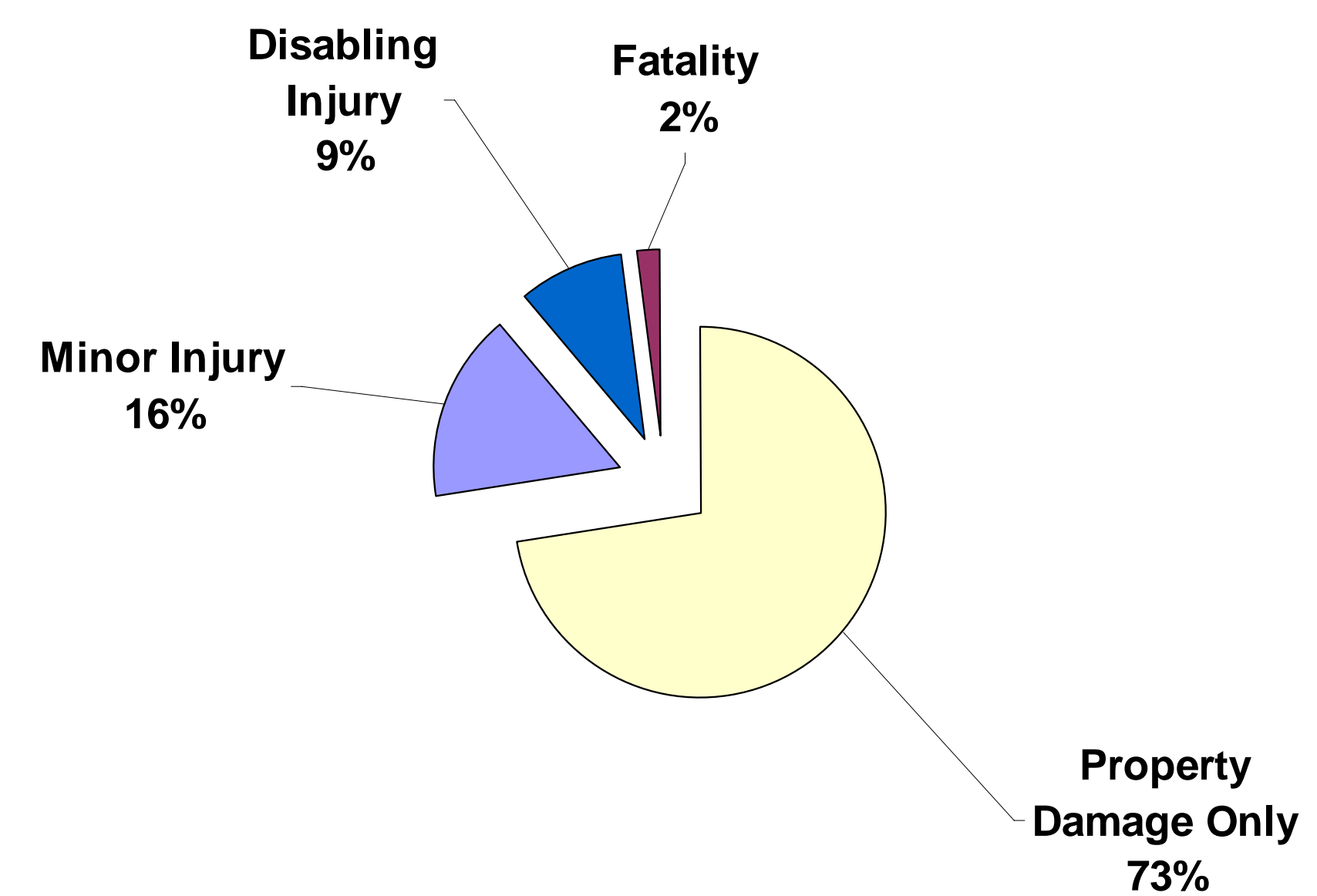
- Prevailing crash types noted above are indicative of unexpected, sudden stopping or reduced speed.

## Webster County Crash Rate Summary

	Webster County	I-44 Study Corridor	Missouri State Average for Interstates
All Crashes	45.73	84.38	113.02
Property Damage Only	33.78	62.61	84.13
Minor Injury	6.92	15.02	28.02
Disabling Injury	4.20	5.46	
Fatality	0.82	1.28	0.87

Source: MoDOT TMS, 2001 - 2005. All Rates Expressed in Number of Crashes per Hundred Million Vehicle Miles Traveled  
Red Text Indicates Rates Higher Than State Average for Similar Facilities

### Webster County Crash Severity Summary

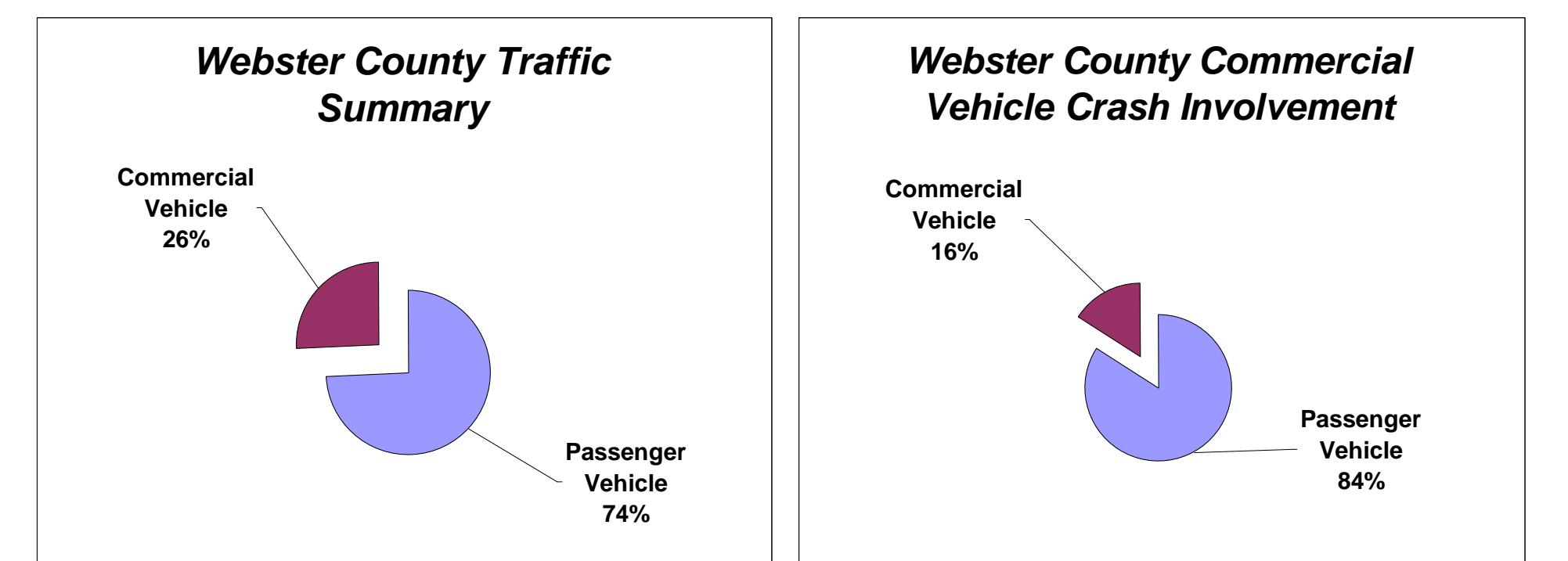


#### Crash Rate and Severity Analysis

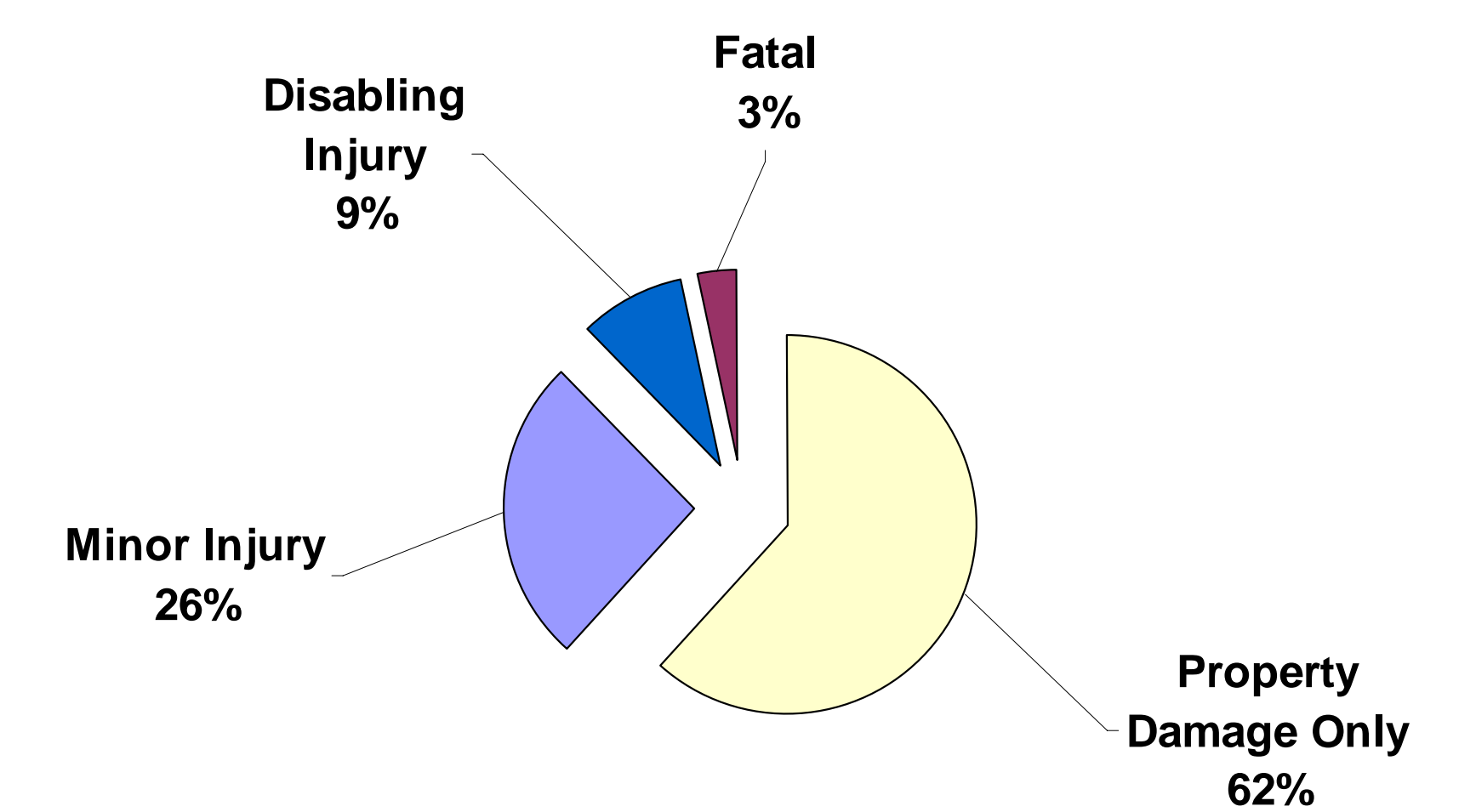
- The I-44 Study Corridor's Fatality Rate is higher than the Missouri State Average for Interstates.

## Commercial Vehicle Crashes in Webster County

Crashes in which at least one vehicle involved was a commercial vehicle



### Webster County Commercial Vehicle Crash Severity Summary



#### Commercial Vehicle Crash Analysis

- Commercial Vehicles account for 26% of the traffic volume in Webster County, but are only involved in 16% of the crashes.  
- Commercial Vehicle crashes tend to be more severe than passenger vehicle only crashes.