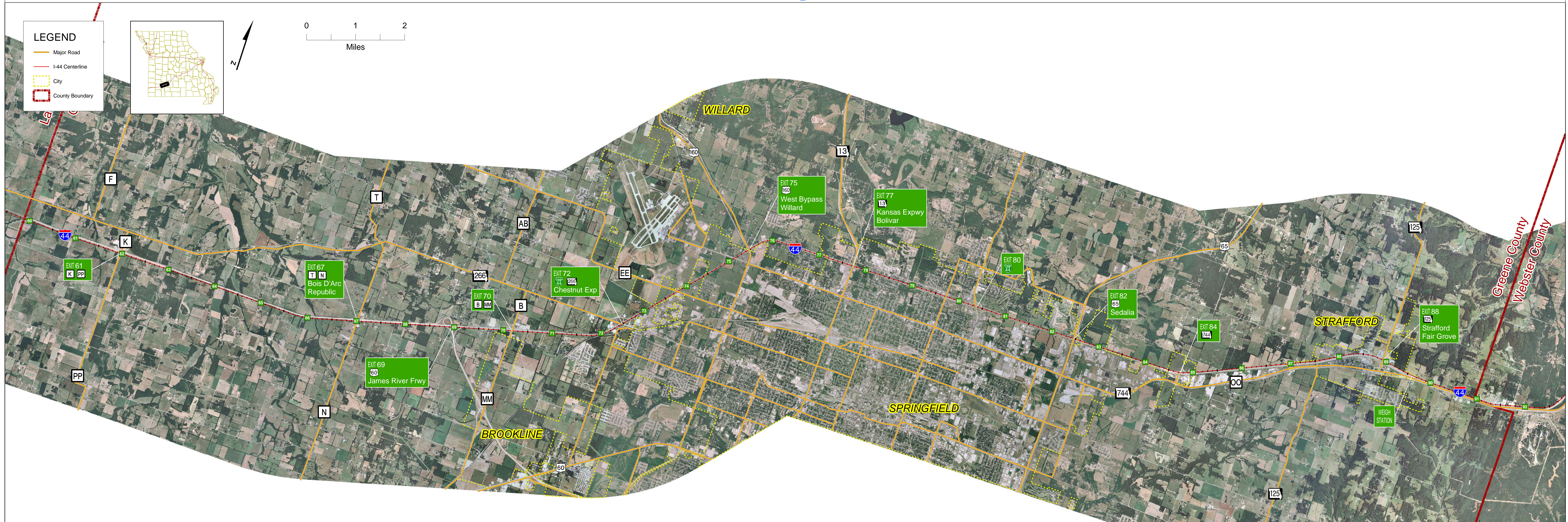
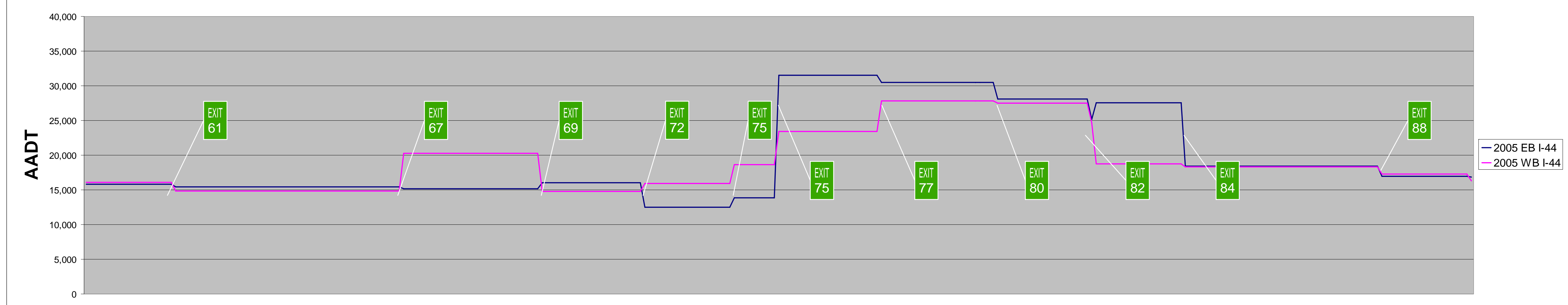


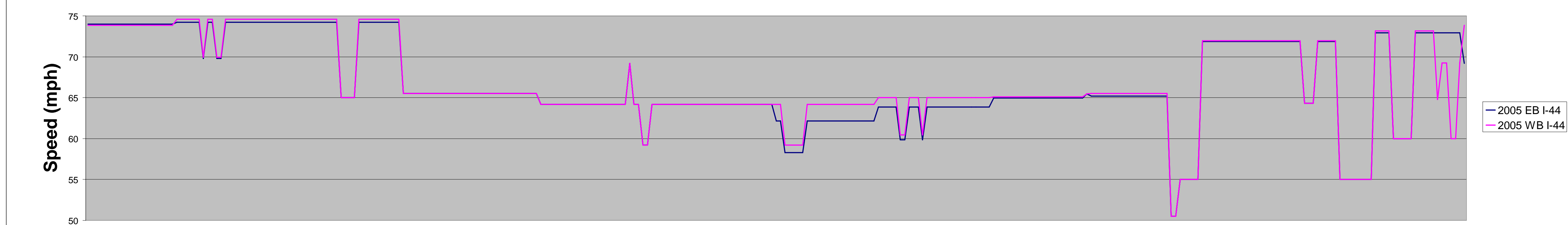
Greene County Traffic Data



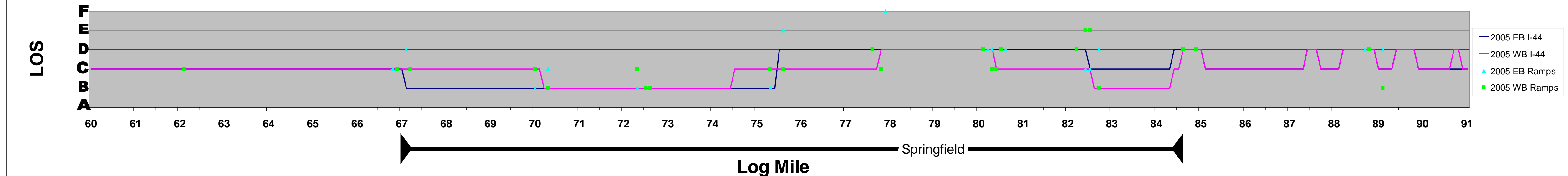
Greene County 2005 Annual Average Daily Traffic (AADT) by Log Mile



Greene County 2005 Average Passenger Car Speed by Log Mile



Greene County 2005 Design Hour Level of Service (LOS) by Log Mile



2005 Analysis

Between Joplin and Springfield

Operations are generally fair, with most sections operating at level of service C. Commercial vehicles make up 28% of the total traffic in the eastbound direction and 26% of the total traffic in the westbound direction.

Through Springfield

Eastbound, the section through the heart of Springfield, between US 160 and US 65, has volumes high enough to result in somewhat congested operations at level of service D. Westbound, the section of Springfield between MO 13 (Kansas Expressway) and Loop 44/Route H (Glenstone) has volumes high enough to result in level of service D as well. The sections of Springfield east and west of these sections have generally good to fair operations, ranging between level of service B and C. Commercial vehicles make up 21%-31% of the total traffic eastbound and 22%-29% of the total traffic westbound.

Between Springfield and Marshfield

Operations are generally fair to somewhat congested, which is slightly worse than the rural section between Joplin and Springfield due to higher volumes and several horizontal curves that result in lower speeds. There are also a few vertical curves that result in lower speeds. Levels of service in this section range from C to D. Commercial vehicles make up 22%-29% of the total traffic eastbound and 22%-23% of the total traffic westbound.

Quality of Operations	Level of Service	Evaluation Thresholds
Good	LOS A, LOS B	Suitable for rural
		Suitable for urban
Fair	LOS C	Suitable for rural
		Suitable for urban
Somewhat Congested	LOS D	Not desirable for rural
		Suitable for urban
Congested	LOS E	Not desirable for rural
		Not desirable for urban
Poor	LOS F	Not desirable for rural
		Not desirable for urban

Please see Level of Service board for definitions of LOS A, B, C, D, E, and F.