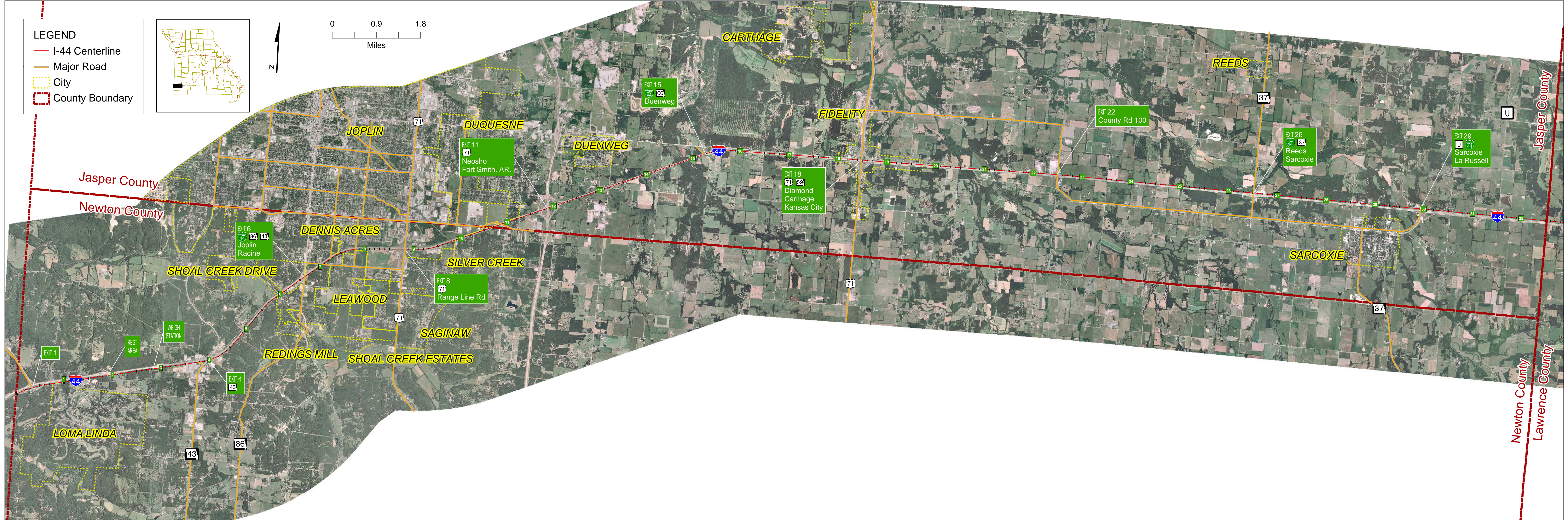
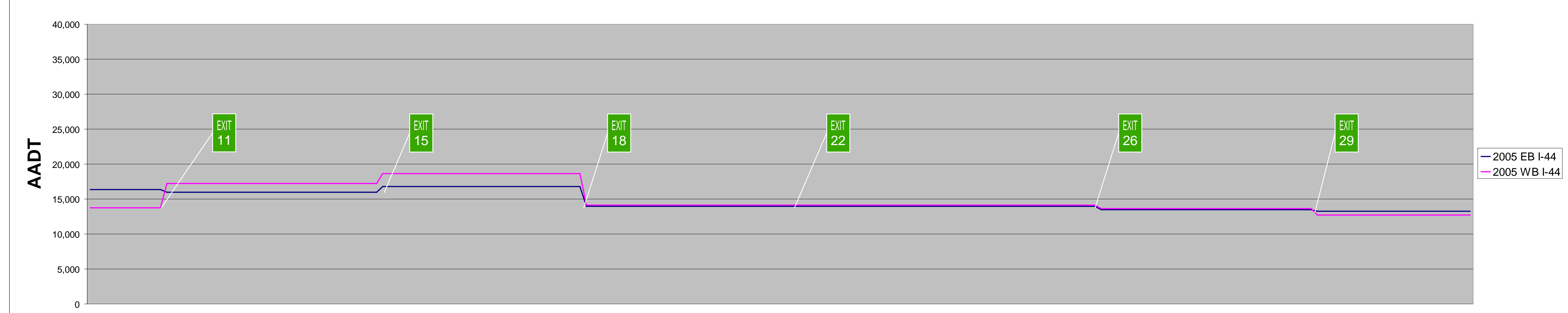


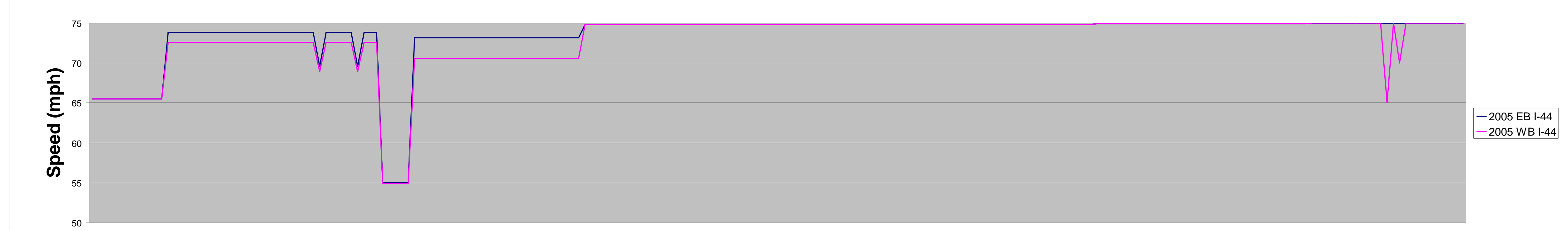
# Jasper County Traffic Data



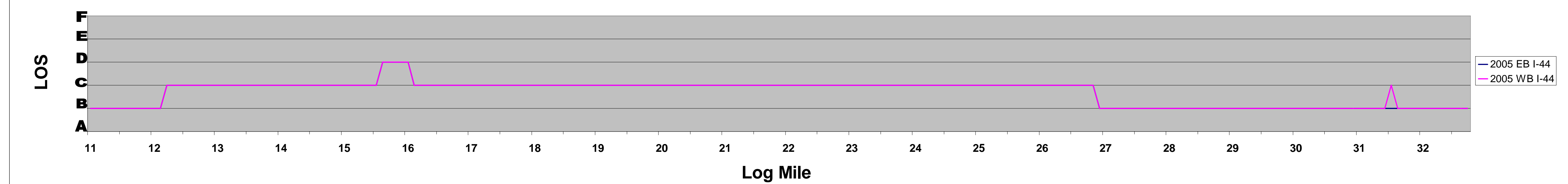
Jasper County 2005 Annual Average Daily Traffic (AADT) by Log Mile



Jasper County 2005 Average Passenger Car Speed by Log Mile



Jasper County 2005 Design Hour Level of Service (LOS) by Log Mile



## 2005 Analysis

### Through Joplin

Operations are generally good, with all sections operating at level of service B. Commercial vehicles make up 29% of the total traffic eastbound and 30% of the total traffic westbound.

### Between Joplin and Springfield

Operations are generally good to fair, with most sections operating at level of service B or C. There is one section with a horizontal curve that was analyzed with a lower speed which resulted in level of service D. Commercial vehicles make up 28%-29% of the total traffic in the eastbound direction and 26%-30% of the total traffic in the westbound direction.

Quality of Operations	Level of Service	Evaluation Thresholds
Good	LOS A, LOS B	Suitable for rural
		Suitable for urban
Fair	LOS C	Suitable for rural
		Suitable for urban
Somewhat Congested	LOS D	Not desirable for rural
		Suitable for urban
Congested	LOS E	Not desirable for rural
		Not desirable for urban
Poor	LOS F	Not desirable for rural
		Not desirable for urban

Please see Level of Service board for definitions of LOS A, B, C, D, E, and F.