

SIU 4 Key Map

Footprint of Recommended Preferred Alternative. Alignment Details Shown On Chapter II-12 Through II-26.

Tentative Location of Potential Noise Walls
 Noise Analysis Representative Receptor Location



SECTION 4
Rocheport to Route Z

Legend
Prime Farmland
 All areas prime farmland
 Farmland of statewide importance
 Prime farmland if drained
 Prime farmland if protected

Proposed Trails
 Primary
 Secondary
 Tertiary

Architectural Survey Results
 On or Eligible for the NRHP
 Not Eligible for the NRHP

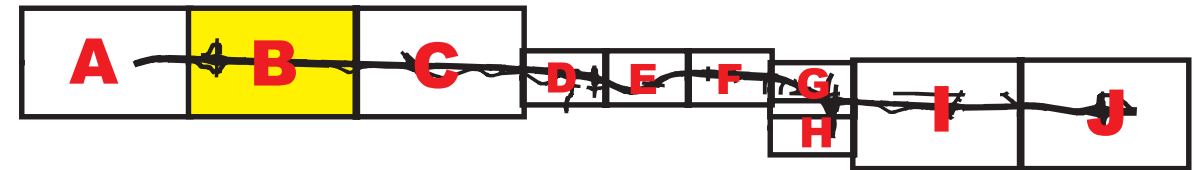
Sites Potentially Eligible for Further Environmental Assessment
 Wells

0 500 1,000
 Scale in Feet
 Aerial Photography November 2000

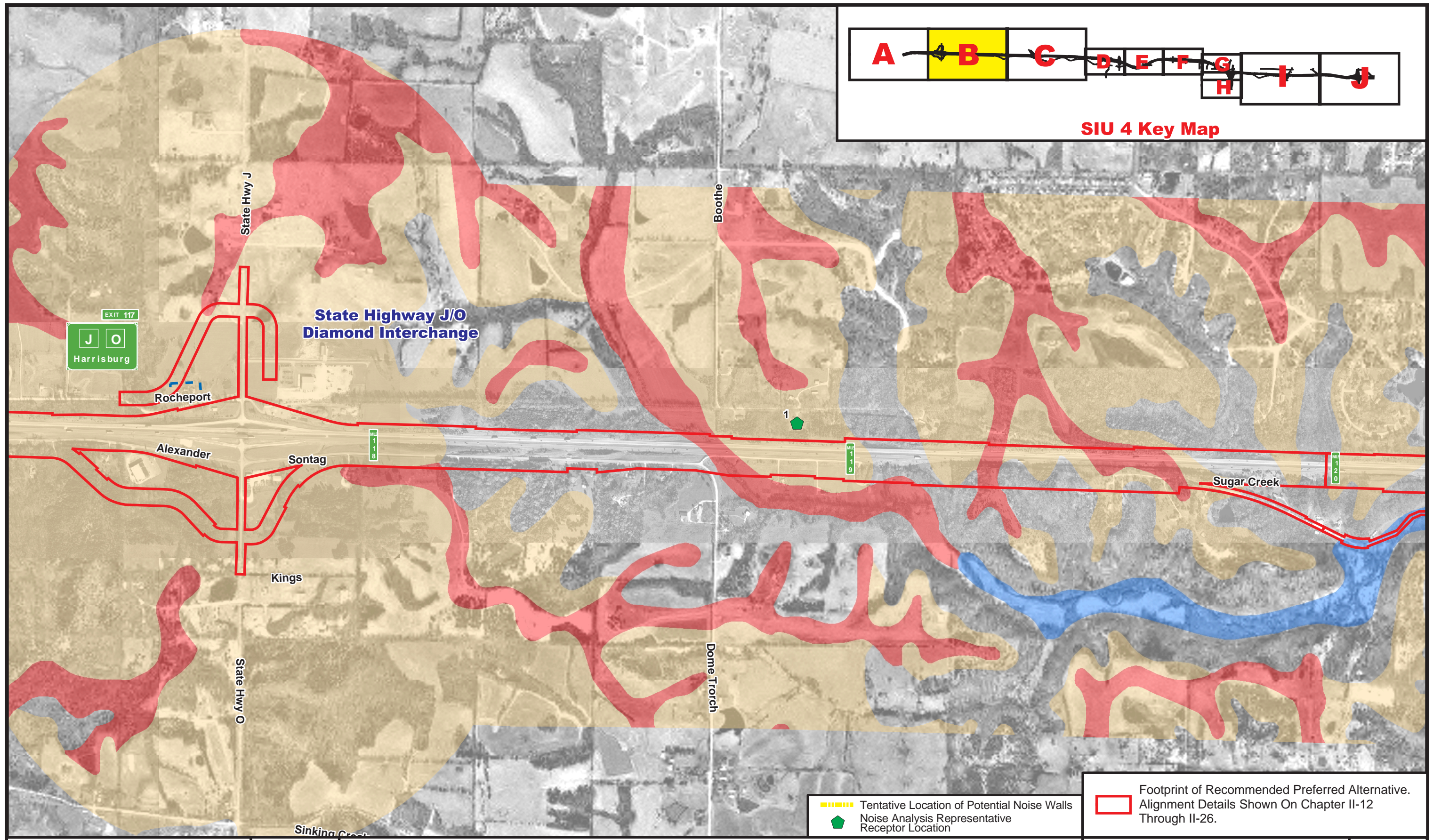


Environmental Resources Map

EXHIBIT III-5A

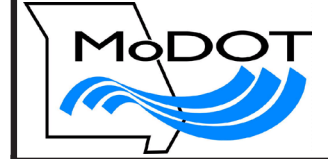


SIU 4 Key Map



- ▬▬▬▬▬ Tentative Location of Potential Noise Walls
- ▬ Noise Analysis Representative Receptor Location

Footprint of Recommended Preferred Alternative. Alignment Details Shown On Chapter II-12 Through II-26.



SECTION 4
Rocheport to Route Z

Legend

Prime Farmland

- All areas prime farmland
- Farmland of statewide importance
- Prime farmland if drained
- Prime farmland if protected

Proposed Trails

- ▬ Primary
- ▬ Secondary
- ▬ Tertiary

Architectural Survey Results

- On or Eligible for the NRHP
- Not Eligible for the NRHP

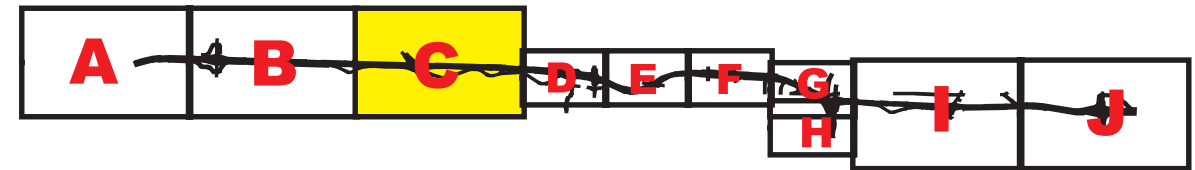
- ✱ Sites Potentially Eligible for Further Environmental Assessment
- Wells

0 500 1,000
Scale in Feet
Aerial Photography November 2000

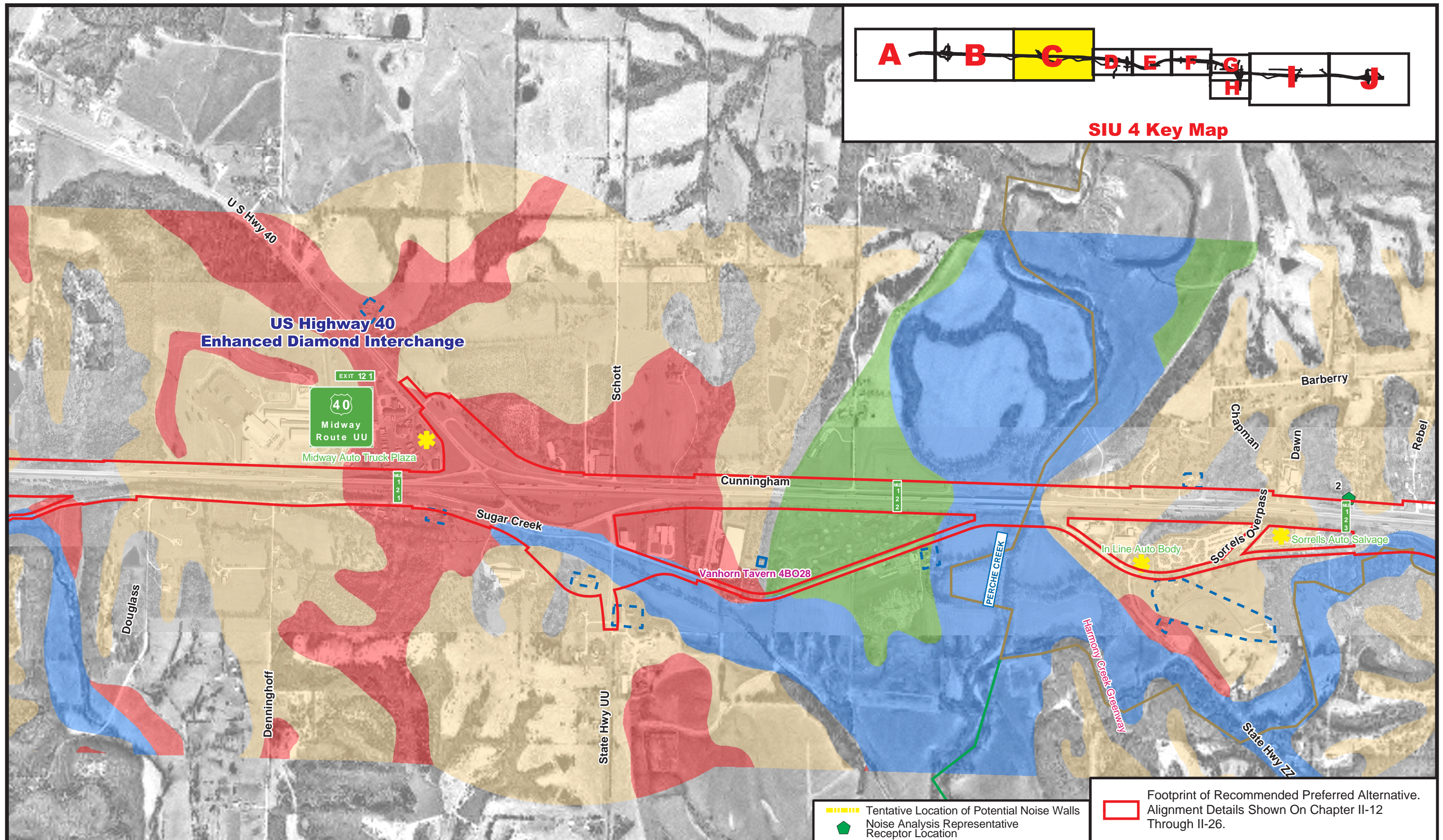


Environmental Resources Map

EXHIBIT III-5B

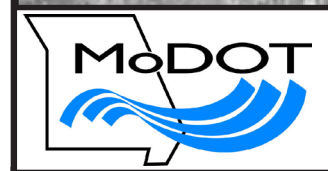


SIU 4 Key Map



Tentative Location of Potential Noise Walls
 Noise Analysis Representative Receptor Location

Footprint of Recommended Preferred Alternative. Alignment Details Shown On Chapter II-12 Through II-26.



SECTION 4
Rocheport to Route Z

Legend
Prime Farmland
 All areas prime farmland
 Farmland of statewide importance
 Prime farmland if drained
 Prime farmland if protected

Proposed Trails
 Primary
 Secondary
 Tertiary

Architectural Survey Results
 On or Eligible for the NRHP
 Not Eligible for the NRHP

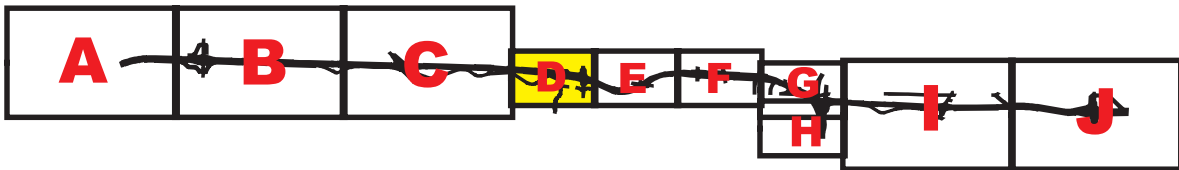
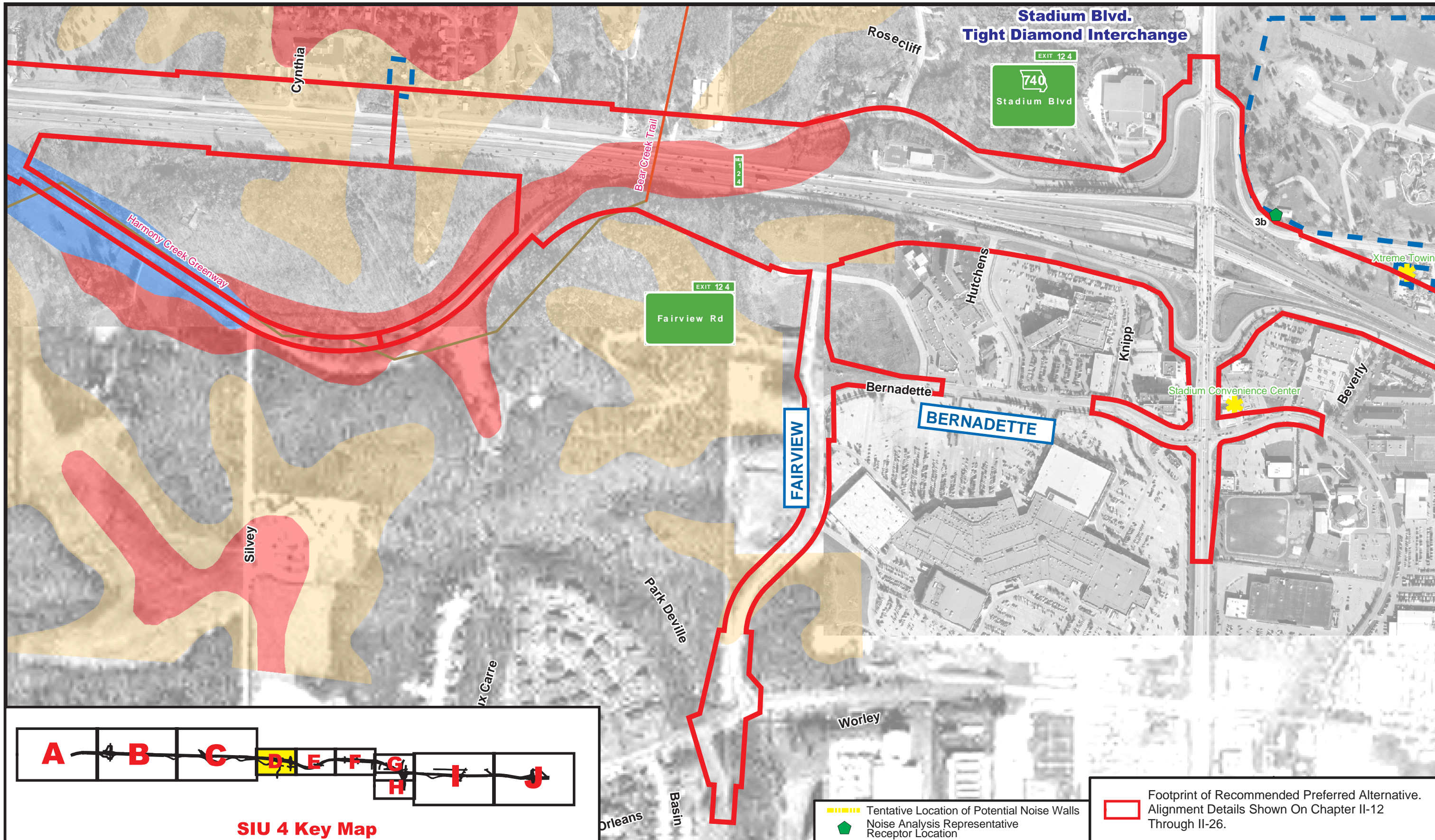
Sites Potentially Eligible for Further Environmental Assessment
 Wells

0 500 1,000
 Scale in Feet
 Aerial Photography November 2000



Environmental Resources Map

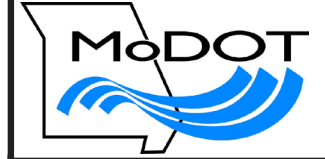
EXHIBIT III-5C



SIU 4 Key Map

Tentative Location of Potential Noise Walls
 Noise Analysis Representative Receptor Location

Footprint of Recommended Preferred Alternative. Alignment Details Shown On Chapter II-12 Through II-26.



SECTION 4
Rocheport to Route Z

Legend

Prime Farmland

- All areas prime farmland
- Farmland of statewide importance
- Prime farmland if drained
- Prime farmland if protected

Proposed Trails

- Primary
- Secondary
- Tertiary

Architectural Survey Results

- On or Eligible for the NRHP
- Not Eligible for the NRHP

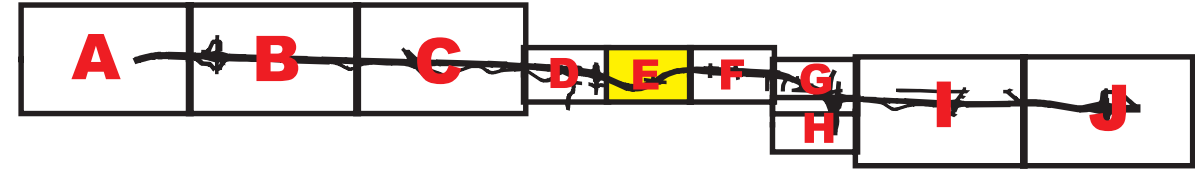
Sites Potentially Eligible for Further Environmental Assessment
 Wells

0 250 500
 Scale in Feet
 Aerial Photography November 2000

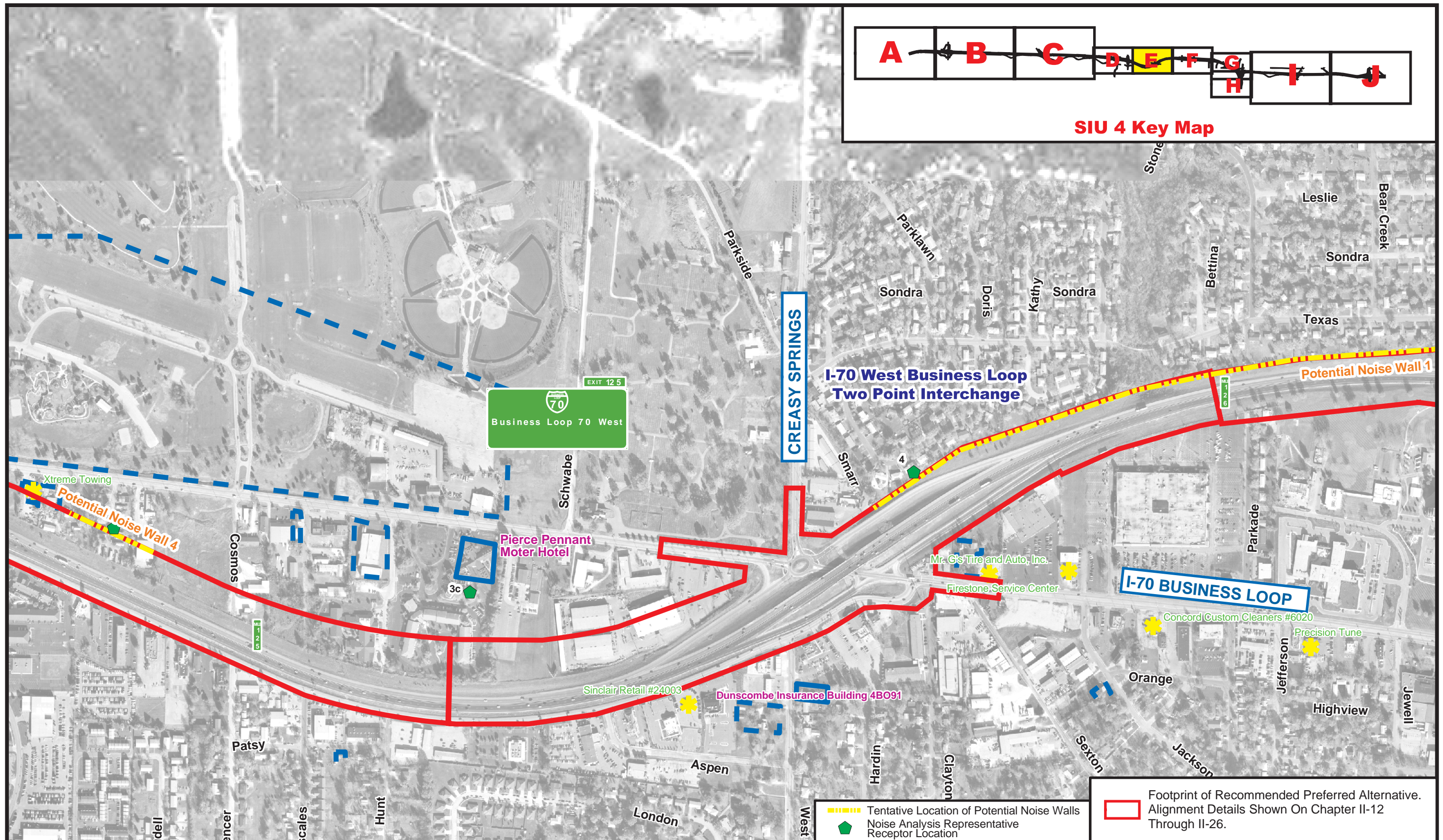





Environmental Resources Map

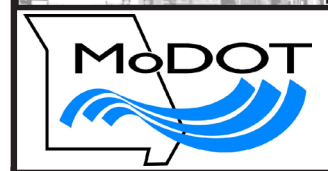
EXHIBIT III-5D



SIU 4 Key Map



 Footprint of Recommended Preferred Alternative. Alignment Details Shown On Chapter II-12 Through II-26.
 Tentative Location of Potential Noise Walls
 Noise Analysis Representative Receptor Location






SECTION 4
Rocheport to Route Z

Legend



Prime Farmland



-  All areas prime farmland
-  Prime farmland if drained
-  Farmland of statewide importance
-  Prime farmland if protected

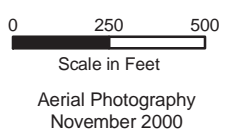
Proposed Trails

-  Primary
-  Secondary
-  Tertiary

Architectural Survey Results

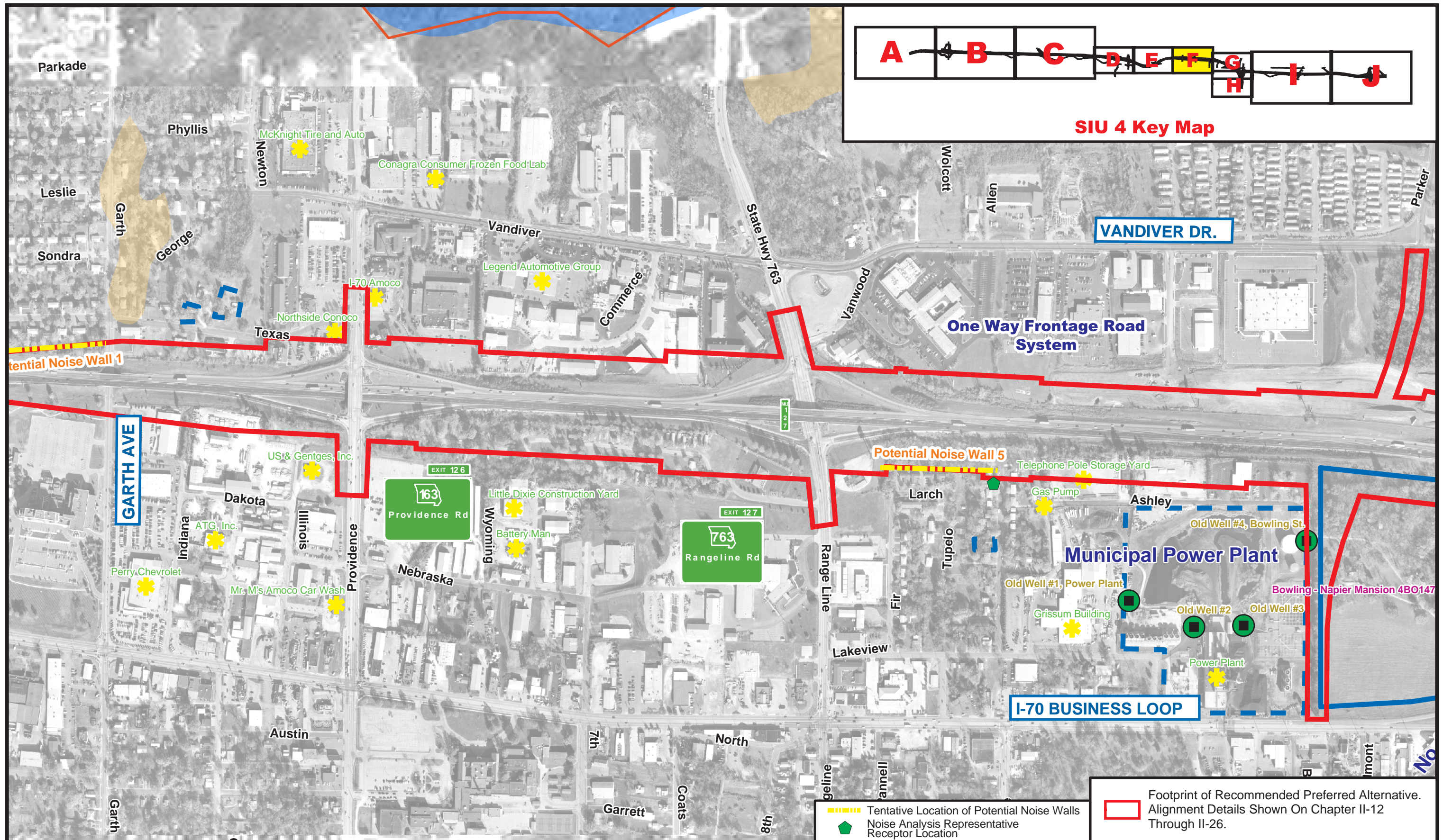
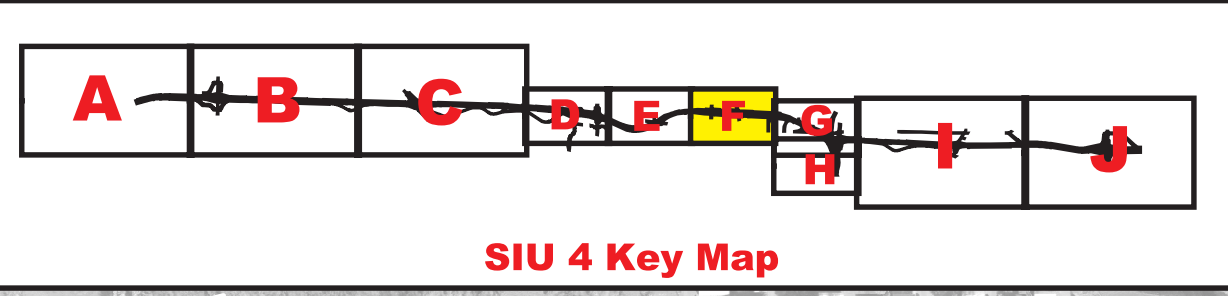
-  On or Eligible for the NRHP
-  Not Eligible for the NRHP

 Sites Potentially Eligible for Further Environmental Assessment
 Wells



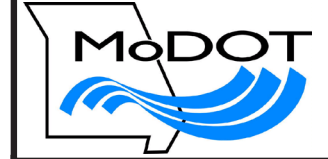
Environmental Resources Map

EXHIBIT III-5E



Tentative Location of Potential Noise Walls
 Noise Analysis Representative Receptor Location

Footprint of Recommended Preferred Alternative. Alignment Details Shown On Chapter II-12 Through II-26.



SECTION 4
Rocheport to Route Z

Legend

Prime Farmland

- All areas prime farmland
- Farmland of statewide importance
- Prime farmland if drained
- Prime farmland if protected

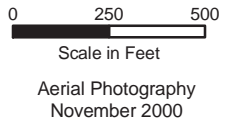
Proposed Trails

- Primary
- Secondary
- Tertiary

Architectural Survey Results

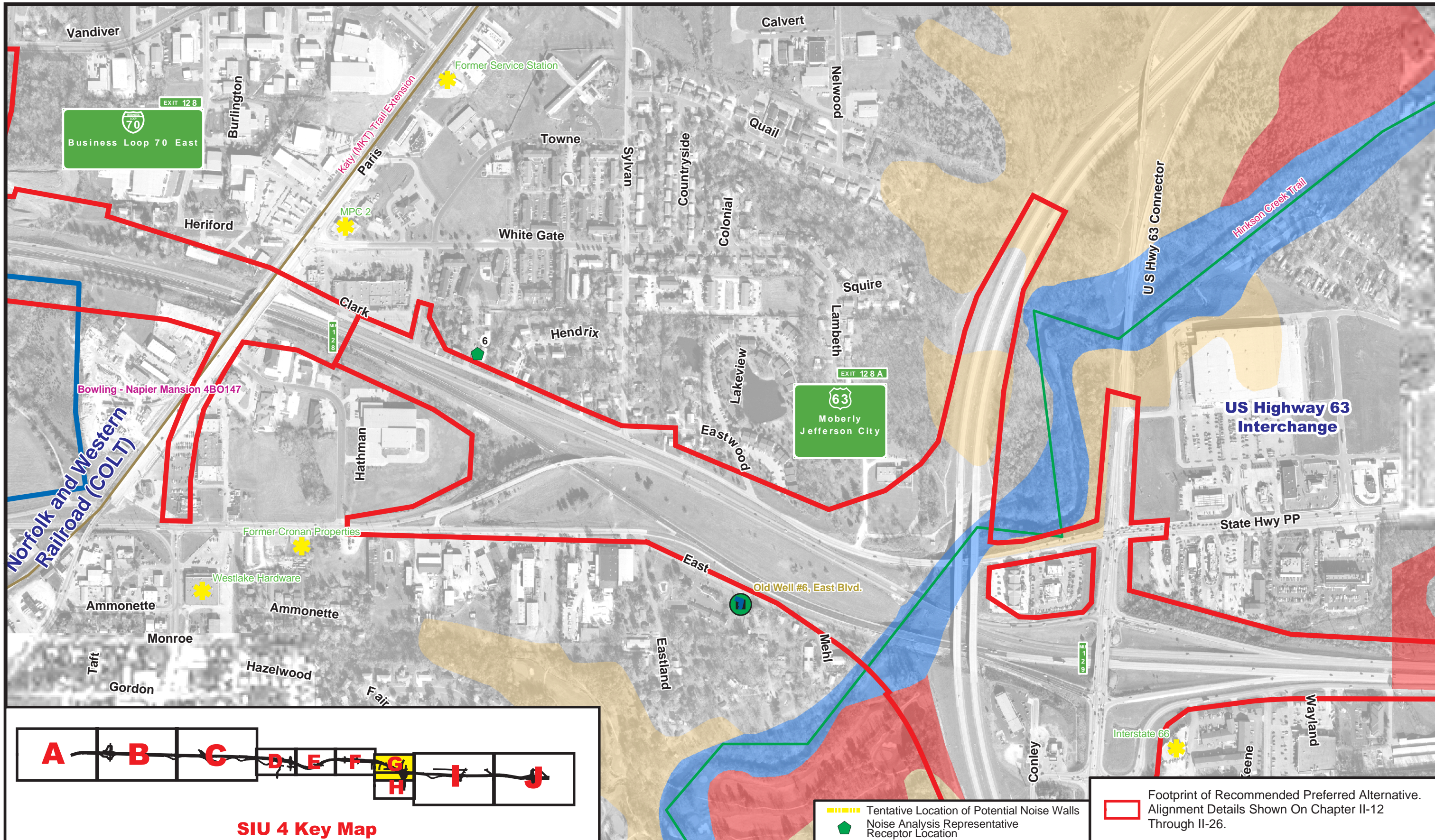
- On or Eligible for the NRHP
- Not Eligible for the NRHP

Sites Potentially Eligible for Further Environmental Assessment
 Wells



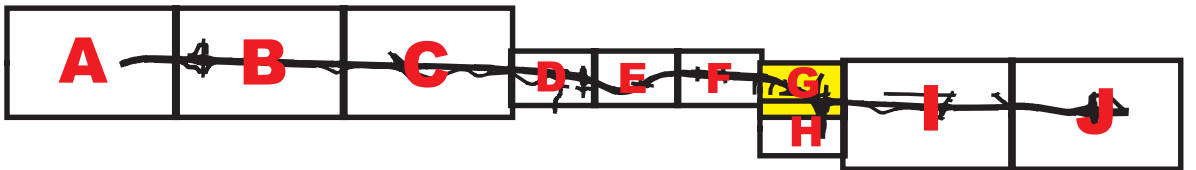
Environmental Resources Map

EXHIBIT III-5F



Footprint of Recommended Preferred Alternative. Alignment Details Shown On Chapter II-12 Through II-26.

Tentative Location of Potential Noise Walls
 Noise Analysis Representative Receptor Location



SIU 4 Key Map



SECTION 4
 Rocheport to Route Z

Legend
Prime Farmland
 All areas prime farmland
 Farmland of statewide importance
 Prime farmland if drained
 Prime farmland if protected

Proposed Trails
 Primary
 Secondary
 Tertiary

Architectural Survey Results
 On or Eligible for the NRHP
 Not Eligible for the NRHP

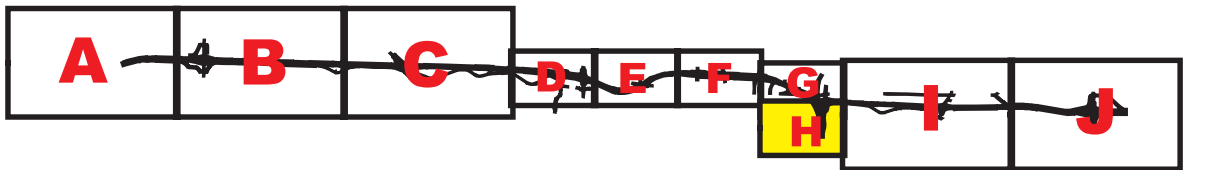
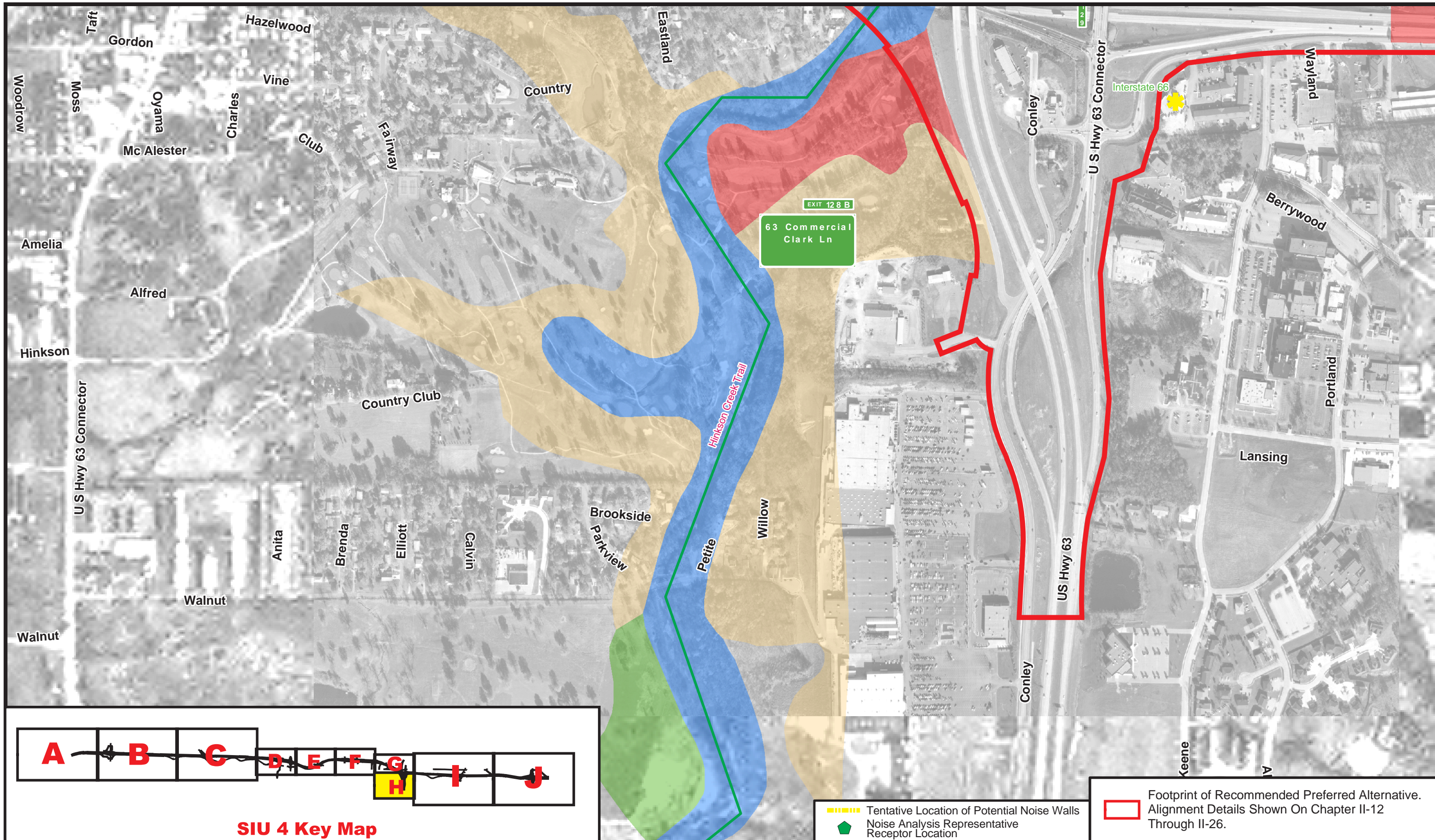
Sites Potentially Eligible for Further Environmental Assessment
 Wells

0 250 500
 Scale in Feet
 Aerial Photography November 2000



Environmental Resources Map

EXHIBIT III-5G



SIU 4 Key Map

Tentative Location of Potential Noise Walls
 Noise Analysis Representative Receptor Location

Footprint of Recommended Preferred Alternative. Alignment Details Shown On Chapter II-12 Through II-26.



SECTION 4
Rocheport to Route Z

Legend

Prime Farmland

- All areas prime farmland
- Prime farmland if drained
- Farmland of statewide importance
- Prime farmland if protected

Proposed Trails

- Primary
- Secondary
- Tertiary

Architectural Survey Results

- On or Eligible for the NRHP
- Not Eligible for the NRHP

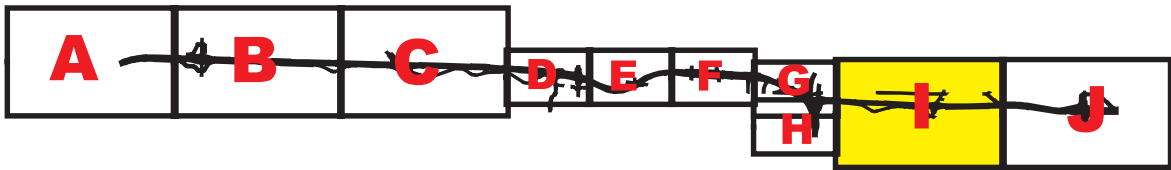
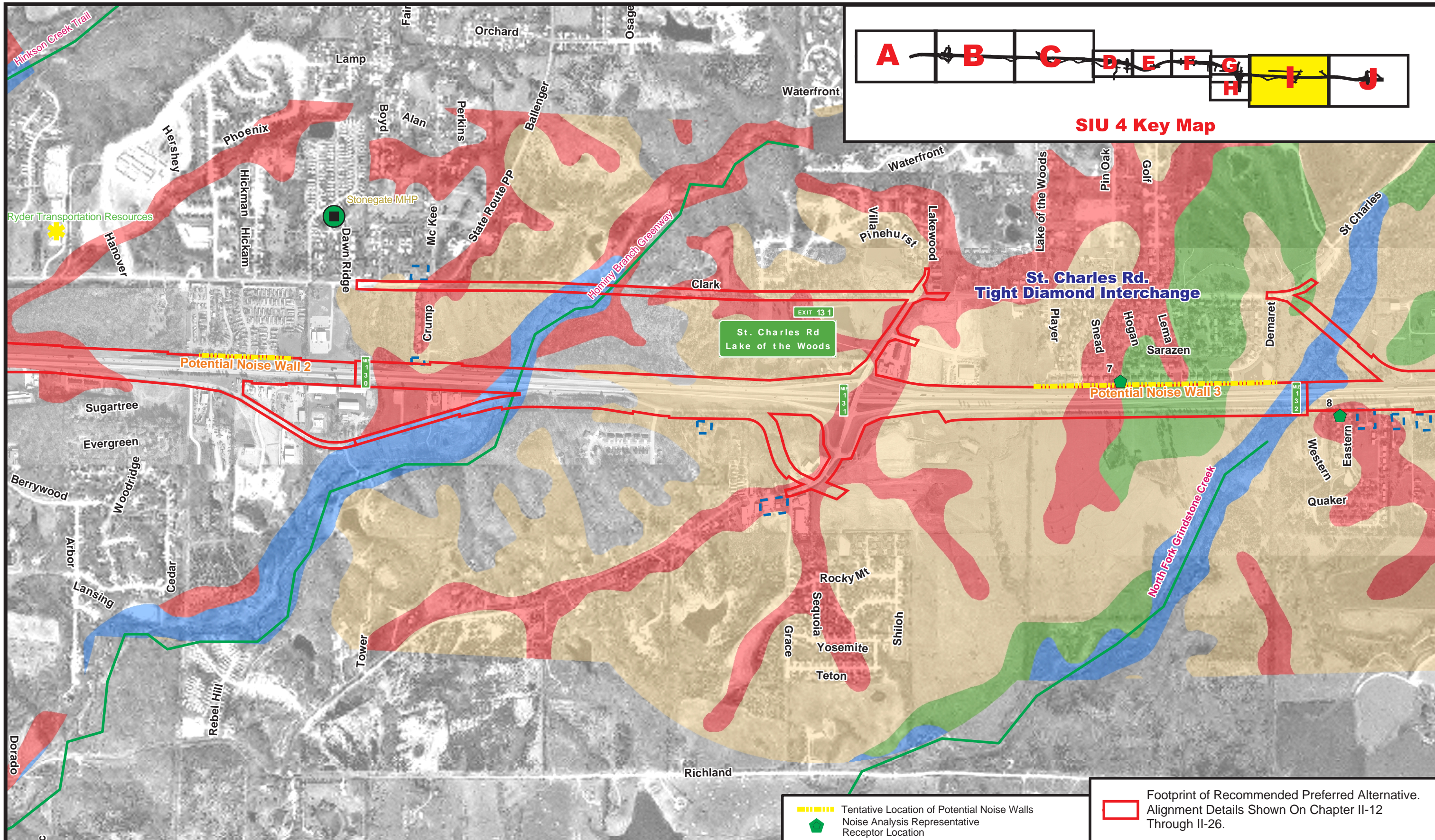
Sites Potentially Eligible for Further Environmental Assessment
 Wells

0 250 500
 Scale in Feet
 Aerial Photography November 2000



Environmental Resources Map

EXHIBIT III-5H



SIU 4 Key Map

**St. Charles Rd.
Tight Diamond Interchange**

Potential Noise Wall 2

Potential Noise Wall 3

St. Charles Rd
Lake of the Woods

North Fork Grindstone Creek

Hinkson Creek Trail

Hornity Branch Greenway



SECTION 4
Rocheport
to
Route Z

Legend
Prime Farmland
 All areas prime farmland
 Farmland of statewide importance
 Prime farmland if drained
 Prime farmland if protected

Proposed Trails
 Primary
 Secondary
 Tertiary

Architectural Survey Results
 On or Eligible for the NRHP
 Not Eligible for the NRHP

Sites Potentially Eligible for Further Environmental Assessment
 Wells

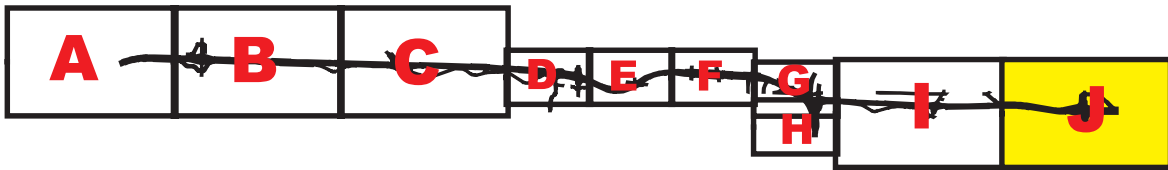
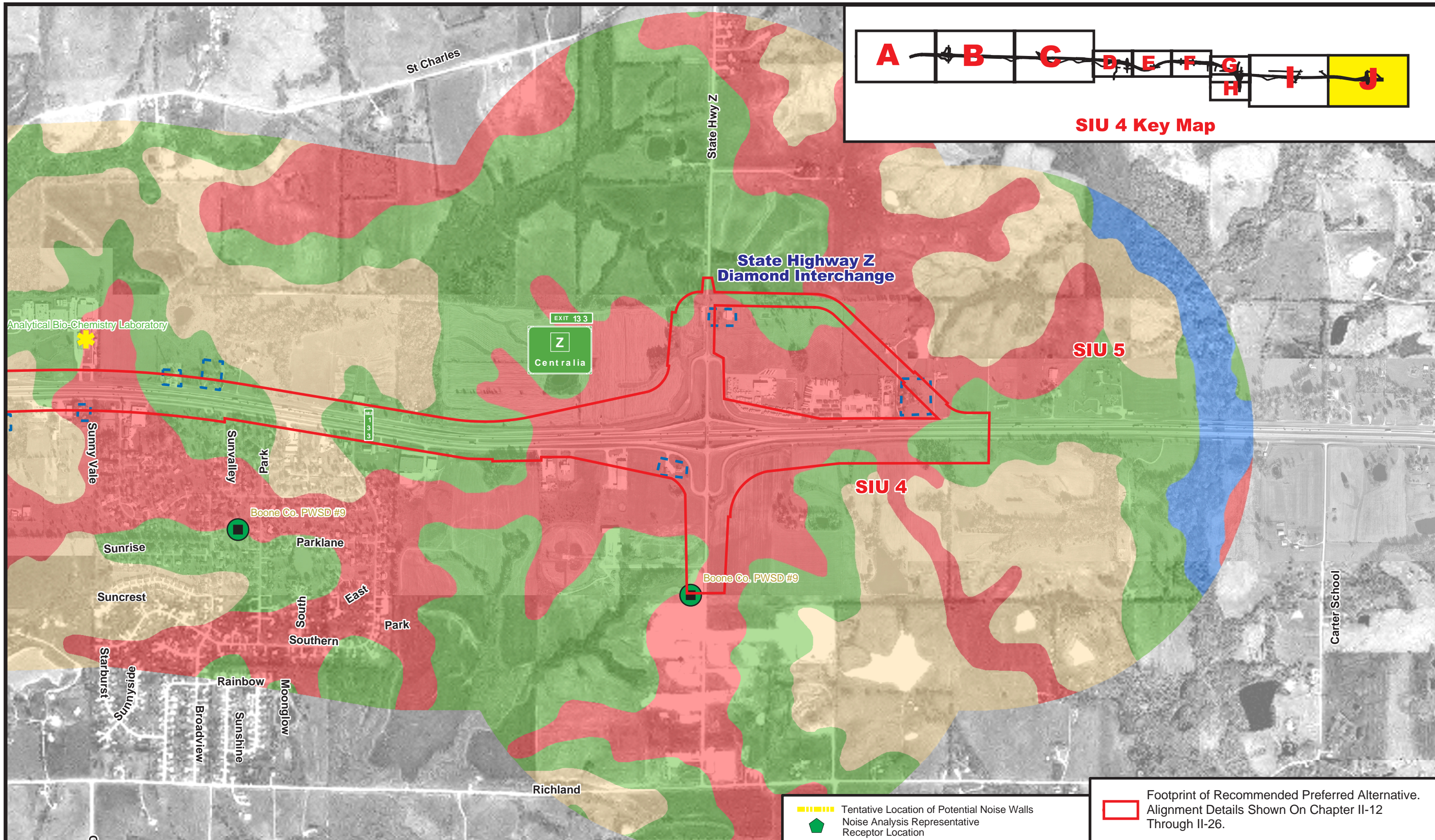
0 500 1,000
 Scale in Feet
 Aerial Photography November 2000






Footprint of Recommended Preferred Alternative. Alignment Details Shown On Chapter II-12 Through II-26.

Environmental Resources Map

EXHIBIT III-51






SIU 4 Key Map



 Footprint of Recommended Preferred Alternative. Alignment Details Shown On Chapter II-12 Through II-26.
 Tentative Location of Potential Noise Walls
 Noise Analysis Representative Receptor Location





SECTION 4
Rocheport to Route Z

Legend
Prime Farmland
 All areas prime farmland
 Farmland of statewide importance
 Prime farmland if drained
 Prime farmland if protected

Proposed Trails
 Primary
 Secondary
 Tertiary

Architectural Survey Results
 On or Eligible for the NRHP
 Not Eligible for the NRHP

 Sites Potentially Eligible for Further Environmental Assessment
 Wells


 Scale in Feet
 Aerial Photography November 2000



Environmental Resources Map

EXHIBIT III-5J