



DO YOUR PART TO MAKE MISSOURI'S ROADS SAFER!
The challenge is simple: when you get into any vehicle, buckle up your safety belt. If you are a driver, put the cellphone down. Turn it off if you have to. Every trip, every time!

Accept the challenge and challenge a friend, relative or members of your community to buckle their seat belts and put their phones down while driving.

www2.modot.org/BuckleUpPhoneDown/



Area Road Work This Year

- The new bridge on Route JJ near Bellflower will open this spring. It was the first bridge to go under construction that was funded through Governor Parson's Focus On Bridge program.
- The Smith Branch Bridge on Missouri Route 161 will be replaced this year.
- Work continues on the I-70 Loutre River Bridges.
- The addition of climbing lanes on I-70 at Mineola Hill, east and west bound lanes.

www.modot.org/mineola-hill-climbing-lanes-design-build

Know YOUR Road Work!

Sign up for e-updates!

Keep informed about this project and others in your area by subscribing to MoDOT's free e-update service at modot.org/northeast. You can select by highway, project and/or county!

Receive text alerts on road closures and weather-related information from MoDOT.



Missouri Department of Transportation

Welcome to E-updates and Text Alerts

Create your new account or update an existing one to receive up-to-the minute information from MoDOT e-mailed and/or text messaged directly to you.

New Subscriber

[Click Here](#)

Returning Subscriber

Customer ID

Password

[Login](#)

[If you have forgotten your password, Click Here](#)



Built in 1963, the existing Missouri Route 19 bridge over Interstate 70 is in poor condition and is in need of replacement. In the early 2000s, a study was conducted along the Interstate 70 corridor, which included replacing the Route 19 bridge and reconfiguring the interchange area. Since the study was completed in 2005, updated options to meet current and future needs related to traffic flow for the bridge and interchange area have been developed.

In order to comply with the Federal Highway Administration, MoDOT needs your input and feedback on the original study, plus the newly developed options. Please learn about the options, complete the survey, which is also available on our website, and share any comments you may have, as well as which option you prefer and why you prefer it.

The existing Highway 19 bridge over Interstate 70 is 28 feet wide and carries an annual average of 5000 vehicles per day. All designs, featured in our displays at the public meeting and online, as well as inside this handout, feature improvements to make the bridge wider and carry more traffic, as we expect more growth in this area in the coming years.

While the project is not actually funded at this time, it is expected to be included in Missouri's Statewide Transportation Improvement Program (STIP). If added to the STIP, construction could begin as soon as Fall 2022.



Your input is needed

Four options are presented for the replacement of the Route 19 bridge over I-70. Customer input can help determine the best value for your tax dollars.

Be in the know!

Sign up for e-updates!

Keep informed about this project and others by subscribing to MoDOT's free e-update service at modot.org/northeast.

Receive text alerts on road closures and weather related information from MoDOT.

Questions?

Contact MoDOT Project Manager Kimberly Trainor at 573-248-2576, kimberly.trainor@modot.mo.gov or Area Engineer Erik Maninga, 573-864-4993 or email erik.manninga@modot.mo.gov.

Traveler Information Map

Check MoDOT's Traveler Info Map for weather-related road conditions, flood closures & work zone locations.



Missouri Department of Transportation
1-888 ASK MODOT (275-6636)
www.modot.org/northeast



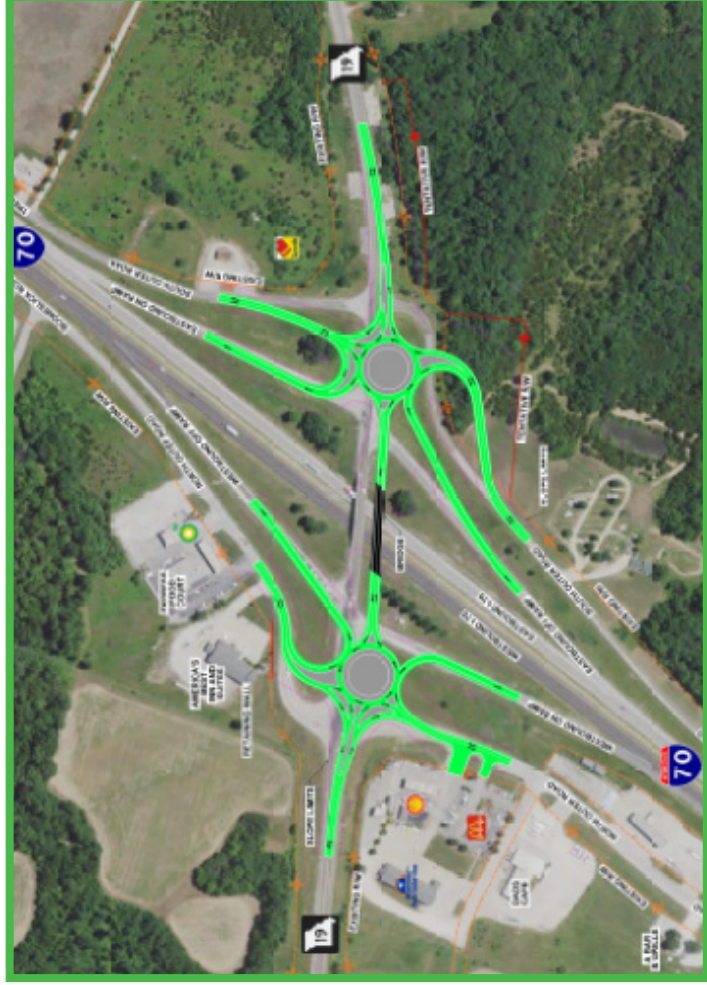
Transportation News in a MoDOT Minute

Sign up for MoDOT's electronic newsletter at www.modot.org

2020 MoDOT RECOMMENDATION

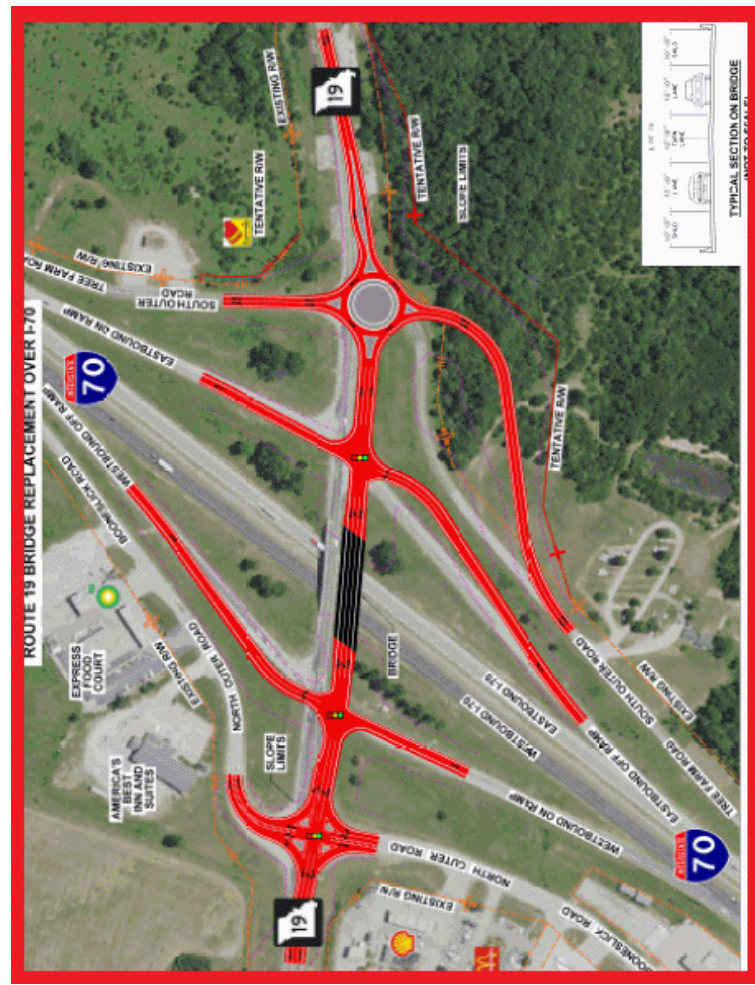
- Green Option
- Cost - \$9.72 Million
- Realign Route 19 to the West
- 6-leg roundabout intersections
- 36' Wide Bridge
- Free Flowing Traffic
- No traffic signals to maintain
- 51% Predicted crash reduction
- Learning curve for traveling thru 6-leg roundabout

RECOMMENDATION



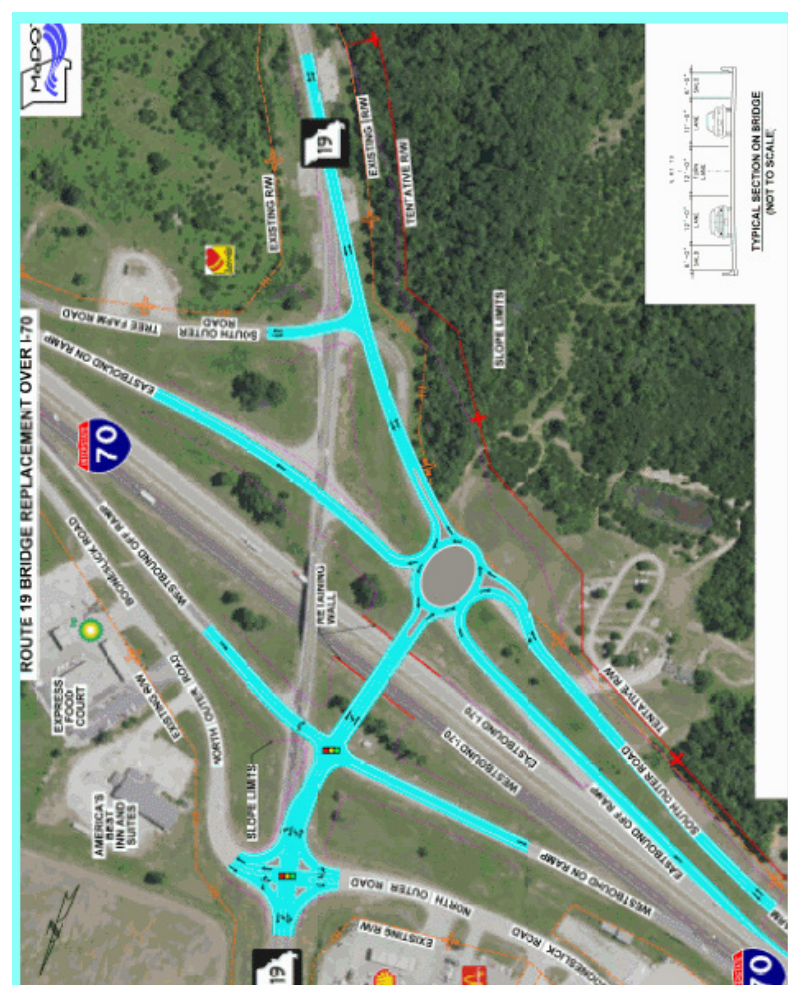
Red Option

- Cost - \$9.78 Million
- Realign Route 19 to the West
- Reconstruct North Outer Road Signal
- 4-leg Roundabout at South Outer Road
- 56' Wide Bridge
- Intersections similar to existing configuration
- Future traffic congestion due to 3 closely spaced signals
- Highest bridge cost
- Signal maintenance costs



Blue Option

- Cost - \$9.45 Million
- Realign Route 19 to the West
- Reconstruct North Outer Road Signal
- 5-leg oval roundabout for South Intersections
- 48' Wide Bridge
- North intersection similar to existing
- Lowest cost
- Extended closure of Eastbound Off Ramp and South Outer Road
- Future traffic congestion due to 2 closely spaced signals



2005 'Improve I-70' Orange Option

- Cost - \$25.7 Million
- Realign Route 19 to the West
- Reconstruct ramps and outer roads at greater spacing
- 48' Wide Bridge
- No traffic signals to maintain
- Highest Cost
- Access changes for all businesses
- Greatest environmental impacts

