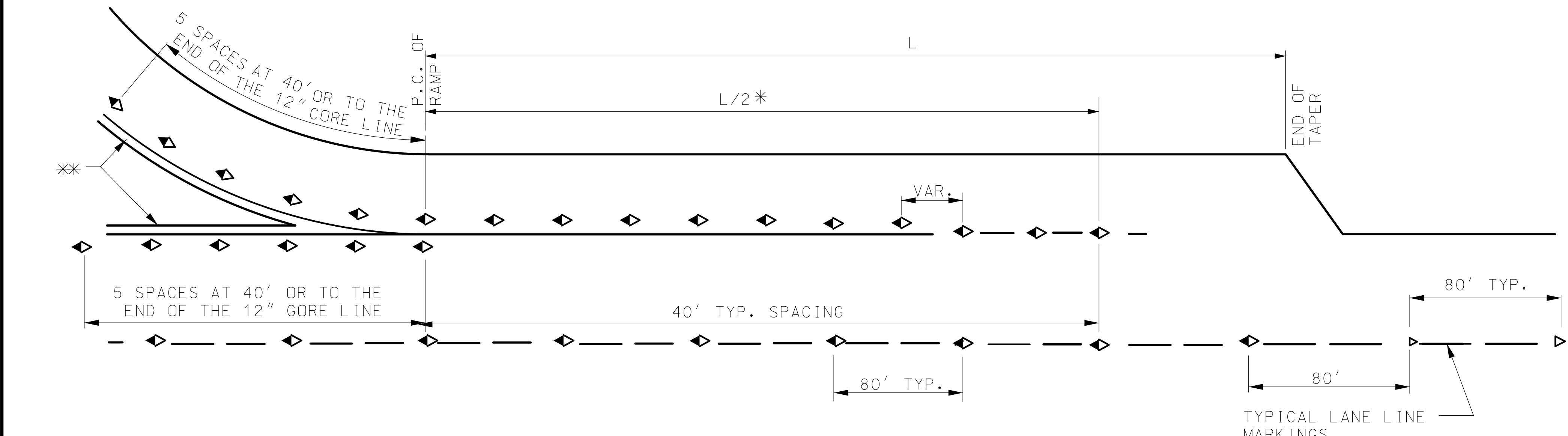
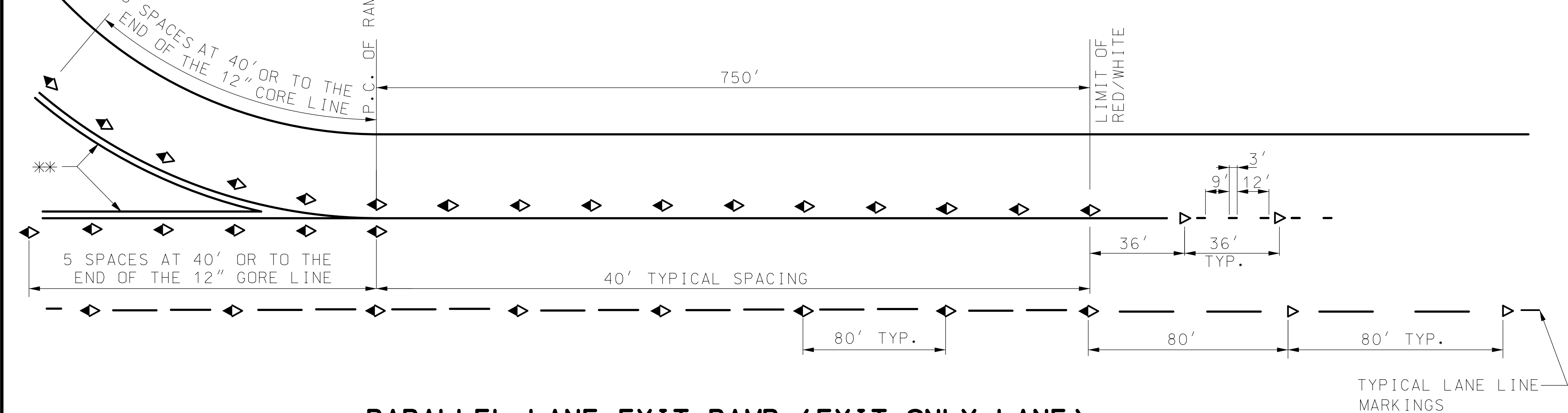


PARALLEL LANE EXIT RAMP (MULTI-LANE)



PARALLEL LANE EXIT RAMP (SINGLE LANE)



PARALLEL LANE EXIT RAMP (EXIT ONLY LANE)

- ◇ RED/WHITE IPM
- ▽ WHITE IPM
- * LIMIT OF IPM'S
- ** 12" GORE LINE
- IPM INLAID PAVEMENT MARKER

GENERAL NOTES:

ALL IPM'S ON DIAMOND INTERCHANGES SHALL BE RED/WHITE SPACED FROM 750 FEET UPSTREAM OF THE P.C. OF THE EXIT RAMP TO THE P.C. OF THE ENTRANCE RAMP, EXCEPT AS OTHERWISE SHOWN.

FOR HALF DIAMOND INTERCHANGE ENTRANCE RAMPS, PLACE THE RED/WHITE IPM'S ON ADJACENT LANES FROM THE GORE POINT TO 750 FEET UPSTREAM.

DIRECTIONAL INTERCHANGES DO NOT REQUIRE RED/WHITE IPM'S, HOWEVER, THE ENGINEER MAY ELECT TO INSTALL RED/WHITE MARKERS INSTEAD OF ONE-WAY WHITE IPM'S.

IPM'S INSTALLED NEXT TO A SOLID LINE SHALL BE PLACED A MINIMUM OF 2" AND A MAXIMUM OF 4" OFF THE LINE.

IPM'S INSTALLED FOR LANE LINE DELINEATION SHALL BE INSTALLED IN LINE WITH THE PAVEMENT MARKINGS AND PLACED IN THE CENTER OF THE GAP. LONGITUDINAL AND TRANSVERSE DEVIATIONS SHALL BE KEPT TO A MINIMUM. THE IPM'S SHALL BE INSTALLED SO THAT THEY ARE ALIGNED TRANSVERSELY.

IPM'S INSTALLED FOR LANE LINE MARKINGS ON MULTILANE EXIT RAMPS ARE TO BE TERMINATED APPROXIMATELY ADJACENT TO THE LAST MARKER INSTALLED IN THE GORE. INTERSTATE-INTERSTATE INTERCHANGES AND COLLECTOR DISTRIBUTORS ARE THE ONLY EXCEPTIONS. FOR INSTALLATION DIAGRAM SEE COLLECTOR DISTRIBUTOR EXIT RAMP ON SHEET 2 OF 4.

IPM'S SHALL BE PLACED IN THE FIRST GAP AFTER TRANSITIONING FROM A SOLID TO AN INTERMITTENT LANE LINE.

ENTRANCE AND EXIT RAMP IPM'S SHALL BE ALIGNED TRANSVERSELY WITH LANE LINE IPM'S WHEN MARKING THE TRANSITION TO THE 80 FOOT SPACING.

A LONGITUDINAL ADJUSTMENT TO THE LOCATION OF THE MARKER SHALL BE MADE IN ORDER TO AVOID DAMAGE TO DETERIORATED PAVEMENTS OR TRANSVERSE JOINTS

IN LOCATIONS WHERE CONCRETE AND BITUMINOUS SURFACES ABUT, THE IPM SHALL BE INSTALLED IN THE CONCRETE SURFACE.

MARKERS SHALL BE OFFSET A MINIMUM OF 2" FROM LONGITUDINAL JOINT AND MINIMUM OF 6" FROM TRANSVERSE JOINT.

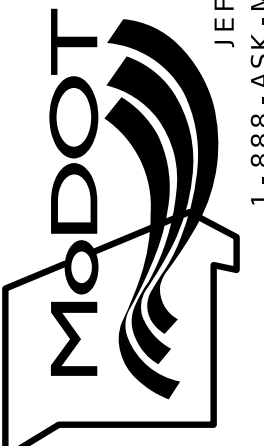
DRAWINGS ARE NOT TO SCALE.

INLAID PAVEMENT MARKERS
EXIT AND ENTRANCE RAMPS

DATE PREPARED 11/30/2022	
ROUTE	STATE MO
DISTRICT	SHEET NO.
COUNTY	
JOB NO.	
CONTRACT ID.	
PROJECT NO.	
BRIDGE NO.	

DATE	DESCRIPTION

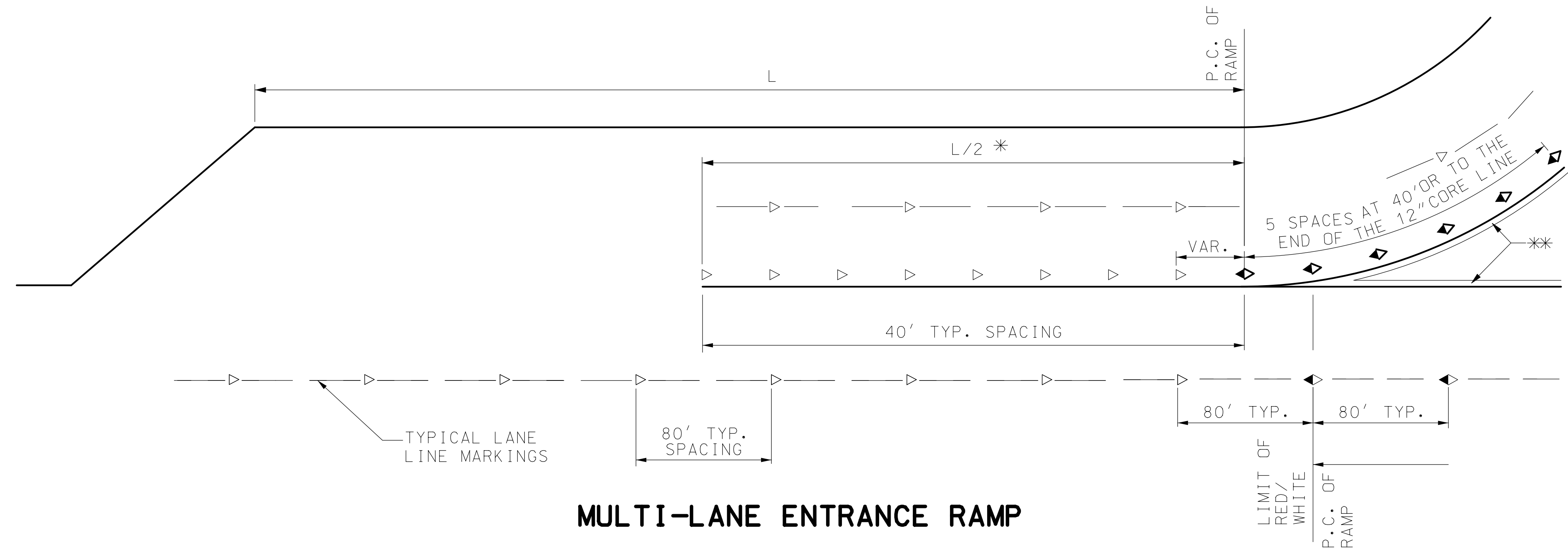
MISSOURI HIGHWAYS AND TRANSPORTATION COMMISSION



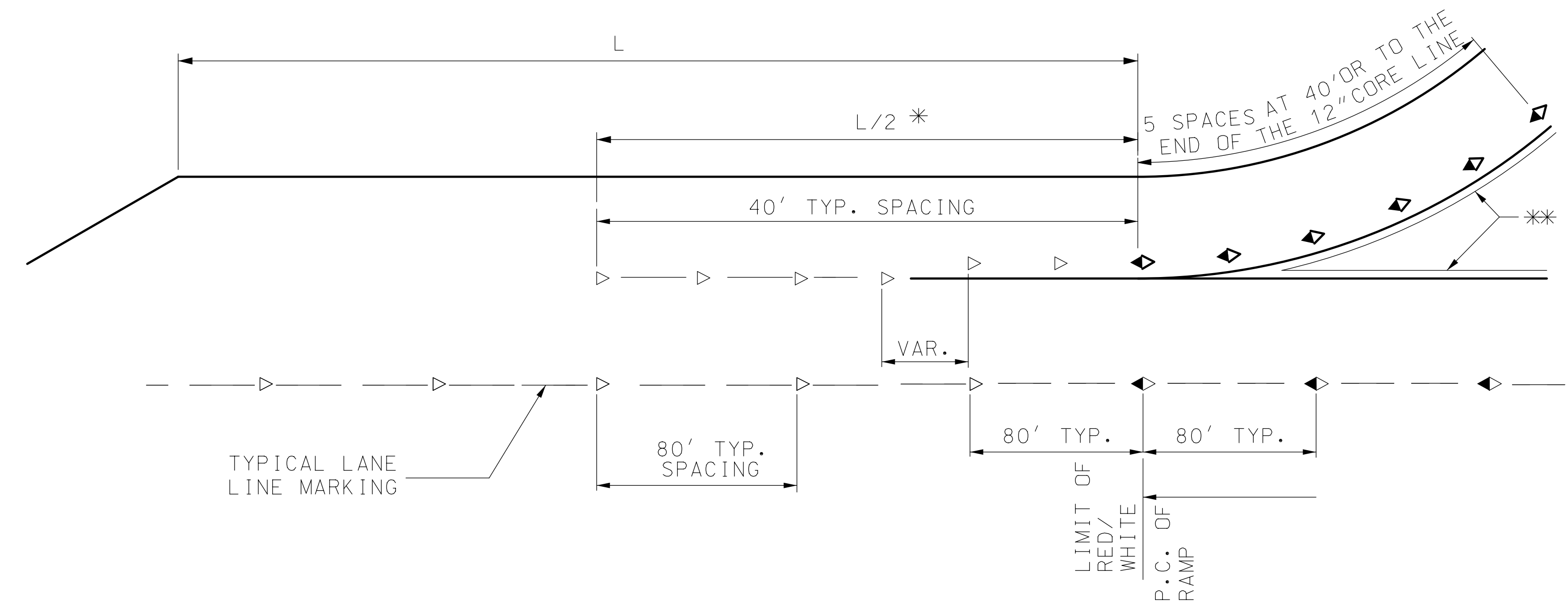
105 WEST CAPITOL
JEFFERSON CITY, MO 65102
1-888-ASK-MODOT (1-888-275-6636)

IF A SEAL IS PRESENT ON THIS SHEET IT HAS BEEN ELECTRONICALLY SEALED AND DATED.

- ◊ RED/WHITE IPM
- ▽ WHITE IMP
- * LIMIT OF IPM'S
- ** 12" GORE LINE
- IPM INLAID PAVEMENT MARKER



MULTI-LANE ENTRANCE RAMP



SINGLE LANE ENTRANCE RAMP

INLAID PAVEMENT MARKERS
EXIT AND ENTRANCE RAMPS

DATE PREPARED		11/30/2022	
ROUTE	STATE	MO	
DISTRICT	SHEET NO.		
COUNTY			
JOB NO.			
CONTRACT ID.			
PROJECT NO.			
BRIDGE NO.			
DATE	DESCRIPTION		
MISSOURI HIGHWAYS AND TRANSPORTATION COMMISSION		105 WEST CAPITOL JEFFERSON CITY, MO 65102 1-888-ASK-MODOT (1-888-275-6636)	

IF A SEAL IS PRESENT ON THIS SHEET IT HAS BEEN ELECTRONICALLY SEALED AND DATED.