

Safety Improvements Project Overview

February 2024



SAFETY
IMPROVEMENTS PROJECT
A LIFESAVING PARTNERSHIP



SAINT LOUIS COUNTY
Missouri



Project Goals

1. Reduce **fatal and serious injury crashes** within the budget of \$52 million.
2. Maximize safety improvements for **pedestrians and roadway users** distributed **equitably** across the project area.
3. Provide improvements with **reasonable maintenance** and service life.
4. Construct improvements with an **emphasis on safety** for workers and the traveling public.
5. Deliver the project by **June 30, 2026** using a **diverse workforce**.

Team Members

Project Director (Procurement & Design) – Stacey Smith *

Project Director (Construction) – Nick Gibbons *

Team Advisor – Tim Hellebusch

Team Members – Glenn Konersmann, Daniel Steinmeyer, Chris Becker, Loriell Campbell

Team Support – Eddie Watkins, Dave Simmons, Katy Harlan, Rachel Sudduth

St. Louis County – Betty Tesfu, Ryan Pierce, Glenn Henninger, Joe Kulesa, Doug Moore

FHWA – Felix Gonzalez

* Stacey will be Project Director until Winter 2024/2025. Nick will be Project Director for the remainder of the project.

Project History

- Highway Safety Improvement Program (HSIP)
 - Federal-aid program for significant reduction in traffic fatalities and serious injuries
 - Available to all public roads
 - Data-driven approach focused on performance required
- MoDOT receives funding annually from HSIP
 - MoDOT offered \$2 million to St. Louis County to match
 - St. Louis County committed funds within a few days

Budget and Financial Partnership

	MoDOT Roadways	St. Louis County Roadways *
Engineering, Stipends, RW, UT	\$8,500,000	\$1,000,000
Design-Build Contract	\$39,500,000	\$3,000,000
<i>Total Budget</i>	<u>\$48,000,000</u>	<u>\$4,000,000</u>

* St. Louis County project includes work on St. Louis County Roads only. This budget consists of \$2 million in Federal Safety Funds and \$2 million in St. Louis County funds.

Data Analysis

- Crash Data Analysis Period: 2016 to 2020
- Results: 5,321 fatal and serious injury crashes on all roads in three counties
- Possible Scope: over 400 locations for competing Design-Build teams to choose from

Design-Build Procurement Process

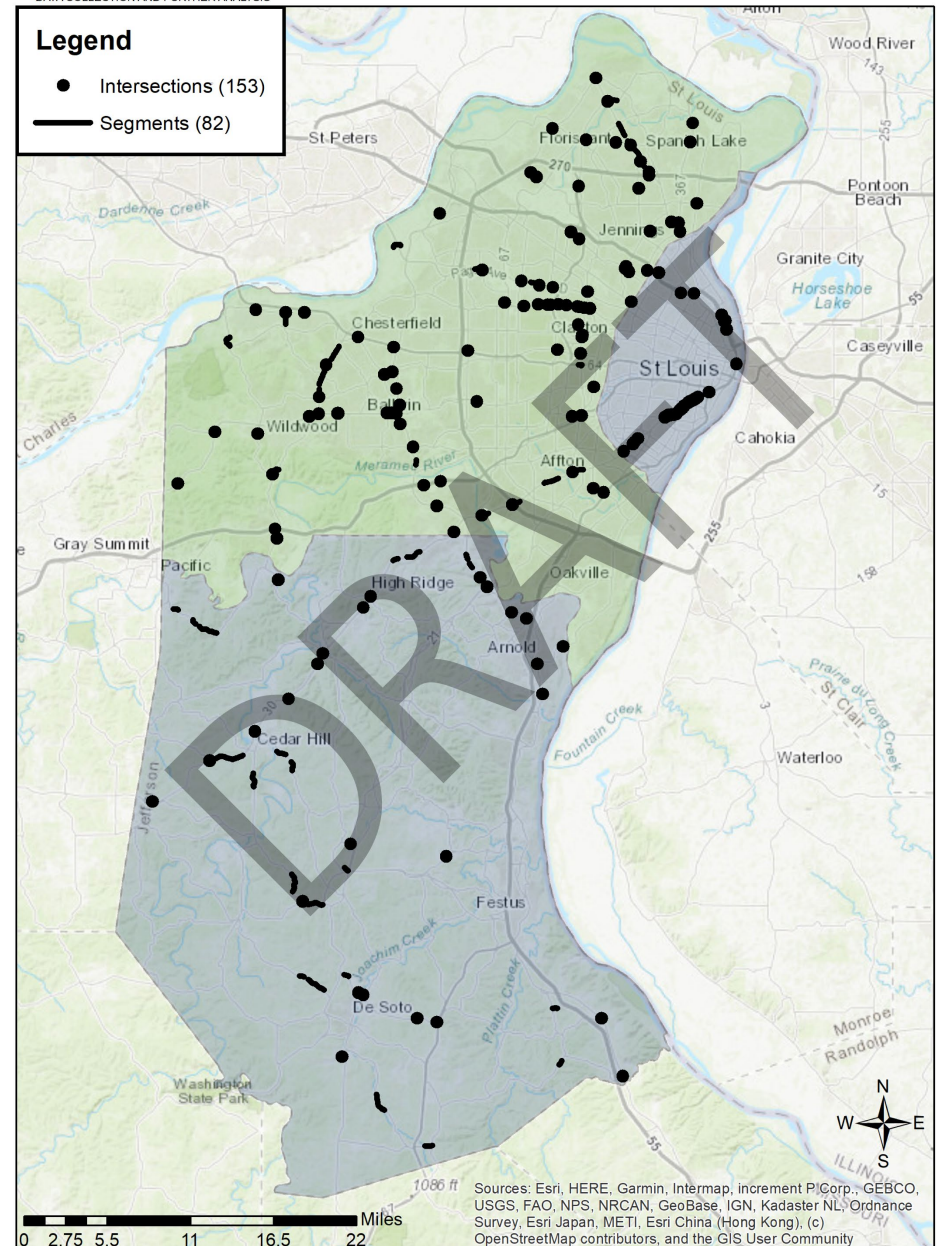
- MoDOT wrote Request for Proposals outlining competition and contract requirements
- Teams maximized general and systemic safety improvements by:
 - Selecting locations and countermeasures
 - Maximizing efficiency in design and constructability
- Also considered:
 - Maintenance requirements
 - Construction requirements

Diversity Requirements

- Disadvantaged Business Enterprise (DBE)
 - 18% for Professional Services
 - 14% for Construction Activities
- Workforce Diversity
 - 14.7% Minority
 - 6.9% Female
 - 2 On-the-Job Trainees (OJT) for Construction

Project Scope

- Over 230 locations in Jefferson County, St. Louis City, and St. Louis County
 - Includes over 30 locations on St. Louis County roads

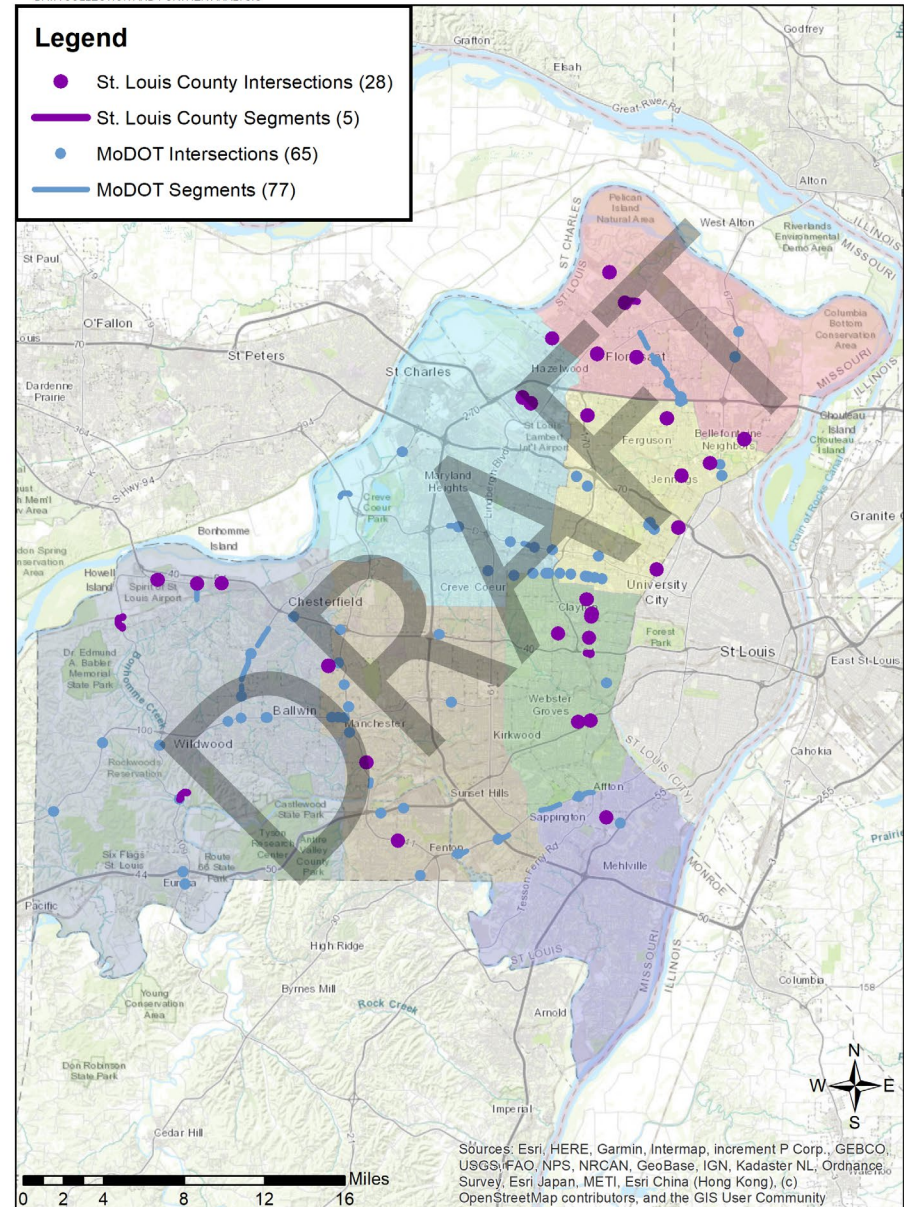


St. Louis County Scope

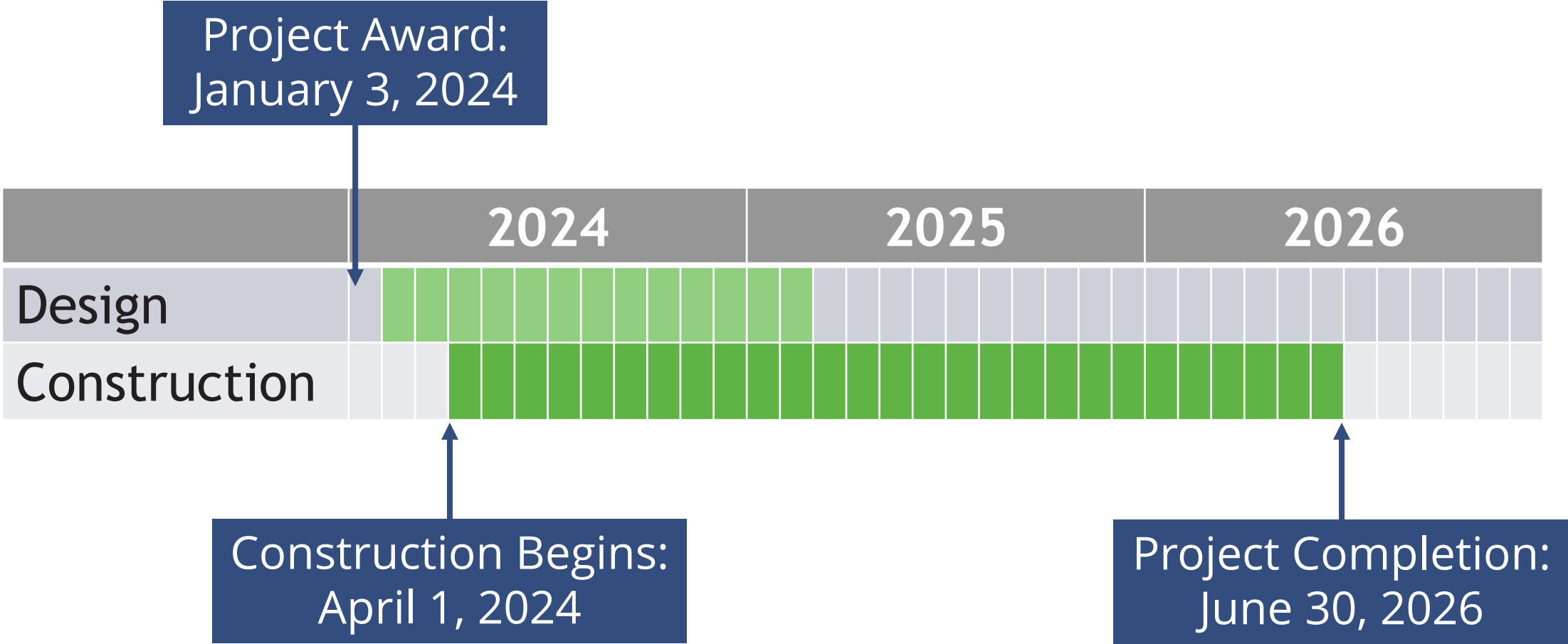
- This project includes work on St. Louis County and MoDOT roads in all seven districts of St. Louis County

FOR PLANNING USE ONLY
 THE LOCATIONS SHOWN ARE CONCEPTUAL
 AND SUBJECT TO CHANGE BASED ON ADDITIONAL
 DATA COLLECTION AND FURTHER ANALYSIS

February 2024



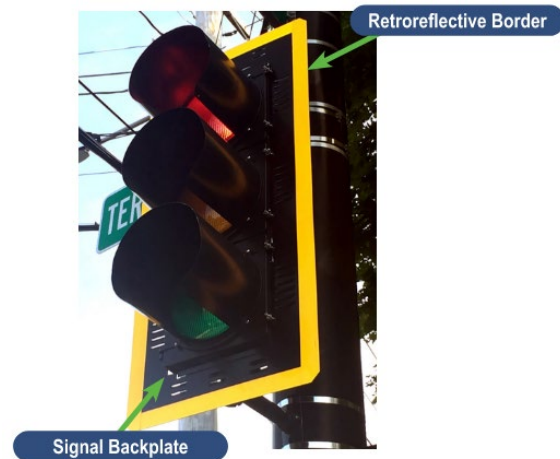
Project Schedule



Individual locations will be completed throughout each year.

What will be constructed first?

- Construction will begin in April, installing retroreflective backplates to make signals more visible and signs to make curves more visible.



\$1.2 Billion

In estimated societal savings due to crash reduction



Source: Missouri Department of Transportation and Federal Highway Administration



170

Fatal and Serious Injury Crashes Reduced
(Estimated) over ten-year period