

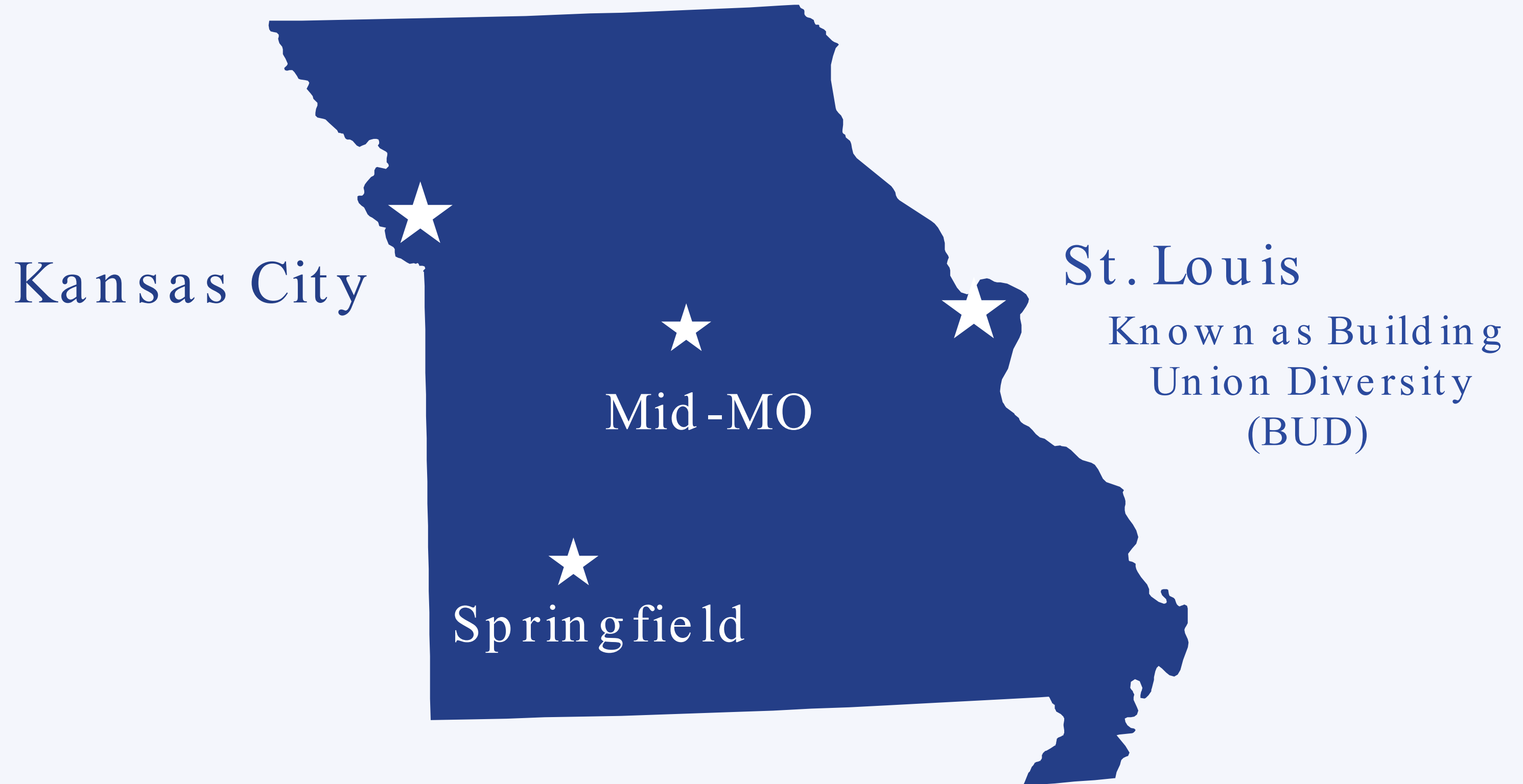


The Missouri Works Initiative (MWI) is a workforce development non-profit sponsored & supported by the Missouri AFL-CIO  
Our mission: Eliminate barriers to economic opportunities by connecting Missourians to the necessary resources to build life-sustaining careers.





# MWI Apprentice Ready Programs:



Problem :

The construction  
workforce  
doesn't look like  
the greater  
community

Women make up 10% of the  
construction workforce

African Americans make up 6.5%  
of the construction workforce

The average age of the construction  
worker is 42



# Solution:

Create an Industry -  
Recognized point of entry  
for underrepresented,  
underemployed, &  
unemployed people to  
access a life-sustaining  
career in the union trades

27% of BUD grads are women

78% of BUD grads are people of  
color

The median age of BUD grads is  
25





# Our Training Model

CLASSROOM  
TRAINING

HANDS-ON  
LEARNING

TRADE  
PLACEMENT  
ADVISING







# The Multi Craft Curriculum

- Created by North America's Building Trades Unions (NABTU)
- Recognized by US DOL and MO Dept. of Workforce Development
- 120 hours of coursework covering:
  - Construction Math
  - Tool Recognition
  - Blueprint Reading
  - Safety Training (OSHA-10 and First Aid/CPR)
  - Heritage of the American Worker
  - Diversity Awareness

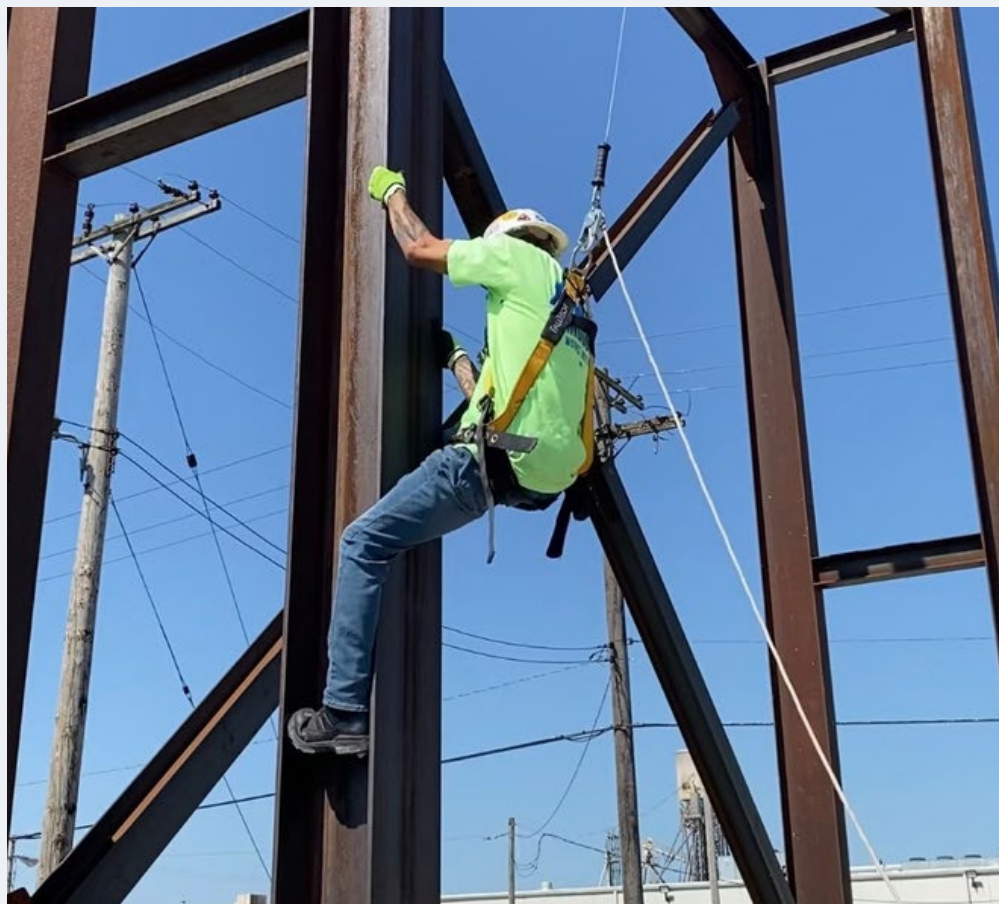






# Preparing a Well-Rounded Construction Worker

- Provide support services, including:
  - Workwear
  - Weekly Stipends
  - Transportation Assistance
  - Tool assistance upon placement
- Prepare for life success:
  - Worker Wellness
  - Financial Literacy
  - Essential Skills
- Connect students with a mentor





# How To Get Involved

- Hire graduates
- Refer applicants
- Host job site visits





