

STA. 282+72.71 ROUTE HH =
 STA. 14+27.42 RAMP 2 =
 STA. 0+00.00 RAMP 4 =
 STA. 0+00.00 DR. RUSSELL SMITH WAY

SW 1/4 - SW 1/4
 SEC. 16-T28N-R31W

SW 1/4 - SE 1/4
 SEC. 16-T28N-R31W

NW 1/4 - NW 1/4
 SEC. 21-T28N-R31W

NW 1/4 - NE 1/4
 SEC. 21-T28N-R31W

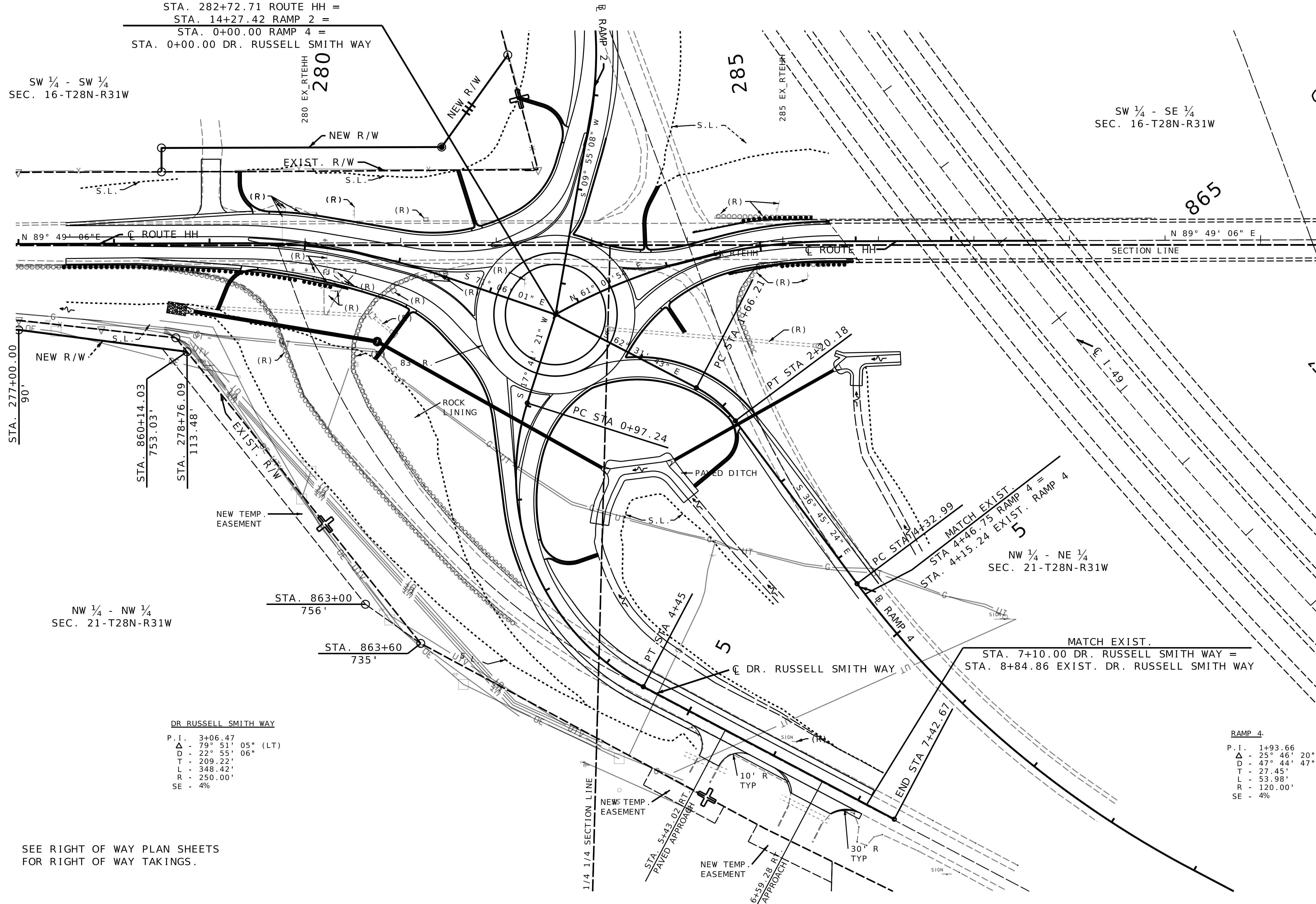
DR RUSSELL SMITH WAY
 P.I. 3+06.47
 Δ - 79° 51' 05" (LT)
 D - 22° 55' 06"
 T - 209.22'
 L - 348.42'
 R - 250.00'
 SE - 4%

RAMP 4
 P.I. 1+93.66
 Δ - 25° 46' 20" (RT)
 D - 47° 44' 47"
 T - 27.45'
 L - 53.98'
 R - 120.00'
 SE - 4%

SEE RIGHT OF WAY PLAN SHEETS
 FOR RIGHT OF WAY TAKINGS.



ALL BEARINGS ARE STATE PLANE, WESTERN ZONE.



ANDERSON ENGINEERING
 EMPLOYEE OWNED
 ENGINEERS • SURVEYORS • LABORATORIES • DRILLING
 1745 S. GARRISON AVE., CARTHAGE, MISSOURI 64836 • PHONE 417-388-9351
 ANDERSON.COM 00062.AC-INC.COM

STATE OF MISSOURI
 SEAN LEE MATLOCK
 NUMBER PE-27633
 PROFESSIONAL ENGINEER
 THIS SHEET HAS BEEN
 SIGNED, SEALED AND DATED
 ELECTRONICALLY.

DRAWING INFO.		REVISIONS		NO.	
DATE	BY	DESCRIPTION	NO.	DATE	BY

JASPER COUNTY, MISSOURI
 PLANS
 SEC 21, T28N, R31W
 ROUTE HH
 SHEET NUMBER
07

IF A SEAL IS PRESENT ON THIS SHEET, IT HAS BEEN ELECTRONICALLY SEALED AND DATED.

© COPYRIGHT ANDERSON ENGINEERING, INC., 2022