

2009-10 District Winner

Tool and Equipment Challenge Showcase
<http://wwwi/intranet/or/SolutionsAtWork/ToolEquip.htm>

March 2010

Prepared by Organizational Results
 Missouri Department of Transportation

Pocket Hitches

Description

Pocket hitches were fabricated for dump trucks to accept multiple attachments.

Benefit

Pocket hitches make changing attachments fast, safe and secure. Hitches are designed to work with a variety of implements including edge rut boxes.



Parts and Labor

Pocket on trucks:

2 ft. – 4" x 4" x $\frac{3}{8}$ " square steel tubing	\$23
6 in. – 2" x $\frac{1}{4}$ " flat steel plate	\$1

Hitch for motorized chipper:

5 ft. – 3" x 3" x $\frac{3}{8}$ " square steel tubing	\$37
18 in. – 1- $\frac{3}{4}$ " round stock	\$11

Hitch for chipper box:

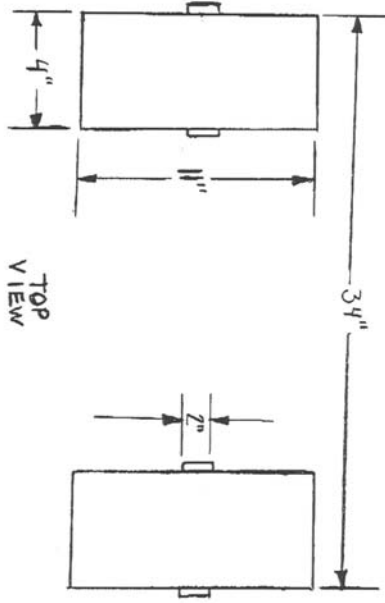
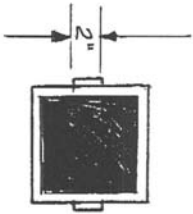
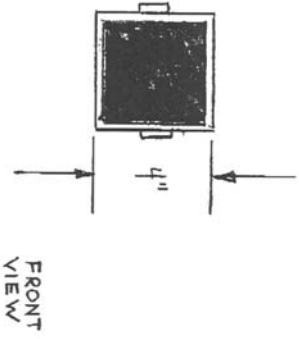
2 ft. – 3" x 3" x $\frac{3}{8}$ " square steel tubing	\$15
4 ft. – 2- $\frac{1}{2}$ " x 2- $\frac{1}{2}$ " x $\frac{1}{4}$ " square steel tubing	\$17
4 ft. – 2" x 2" x $\frac{1}{4}$ " square steel tubing	\$12
30 in. – 1- $\frac{3}{4}$ " round stock	\$11

Total **\$127**
Labor **8 hours**



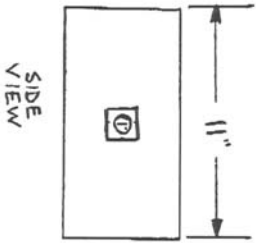
For More Information

Contact Mark Willis at mark.willis@modot.mo.gov or (417) 451-7007. Additional photos can be seen by accessing the Tool and Equipment Challenge homepage at <http://wwwi/intranet/or/SolutionsAtWork/ToolEquip.htm>.



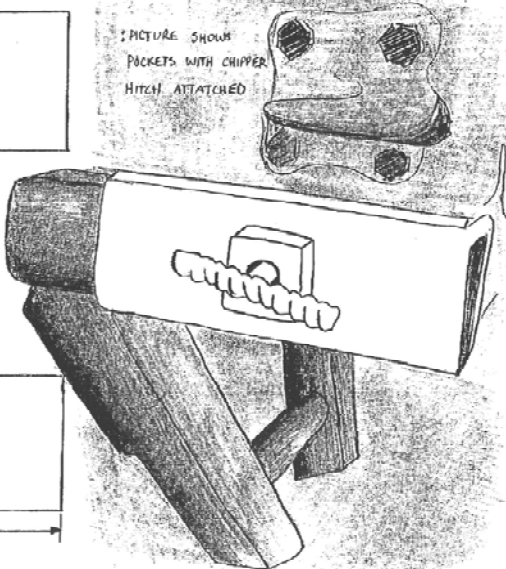
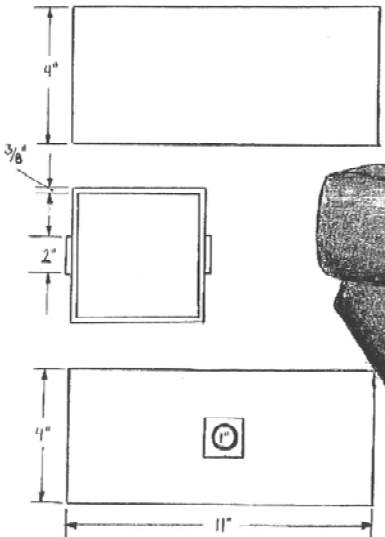
POCKETS

: THESE POCKETS ARE WELDED TO BACK OF DUMP TRUCK. CAN BE USED MANY WAYS. NEEDS MAINTENANCE HAS FABRICATED THREE TYPES; SELF-PROPELLED CHIPPER HITCH, PUSHER HITCH FOR PUSHING THE REGULAR CHIPPER BOX, AND A HITCH TO HOLD AN EDGE-RUT BOX. ALL CAN BE MOUNTED IN UNDER FIVE MINUTES WHEN USING THESE POCKETS.



BACK END OF TRUCK

PICTURE SHOWS POCKETS WITH CHIPPER HITCH ATTACHED



CHIPPER HITCH

: HITCH SLIDES IN POCKETS
ON TRUCKS. PINS THROUGH
ONE INCH HOLE IN POCKETS.
USED WITH SELF-PROPELLED
CHIPPER ON BIG CHIP SEATS.

