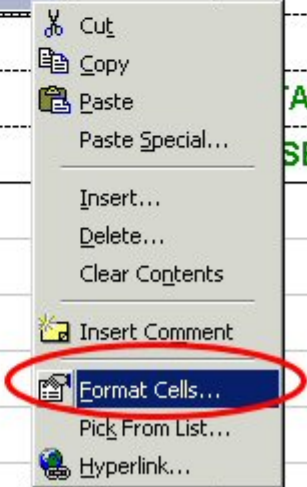


Quantab – Inputting Stations

At times, you may have been working in the Quantab worksheet and been inputting stations for the 2B sheet and not be able to get formulas to work out that you have set up in the excel sheet. In order to get the formulas to work, you will need to change the format of the cells. Here is how that can be done.

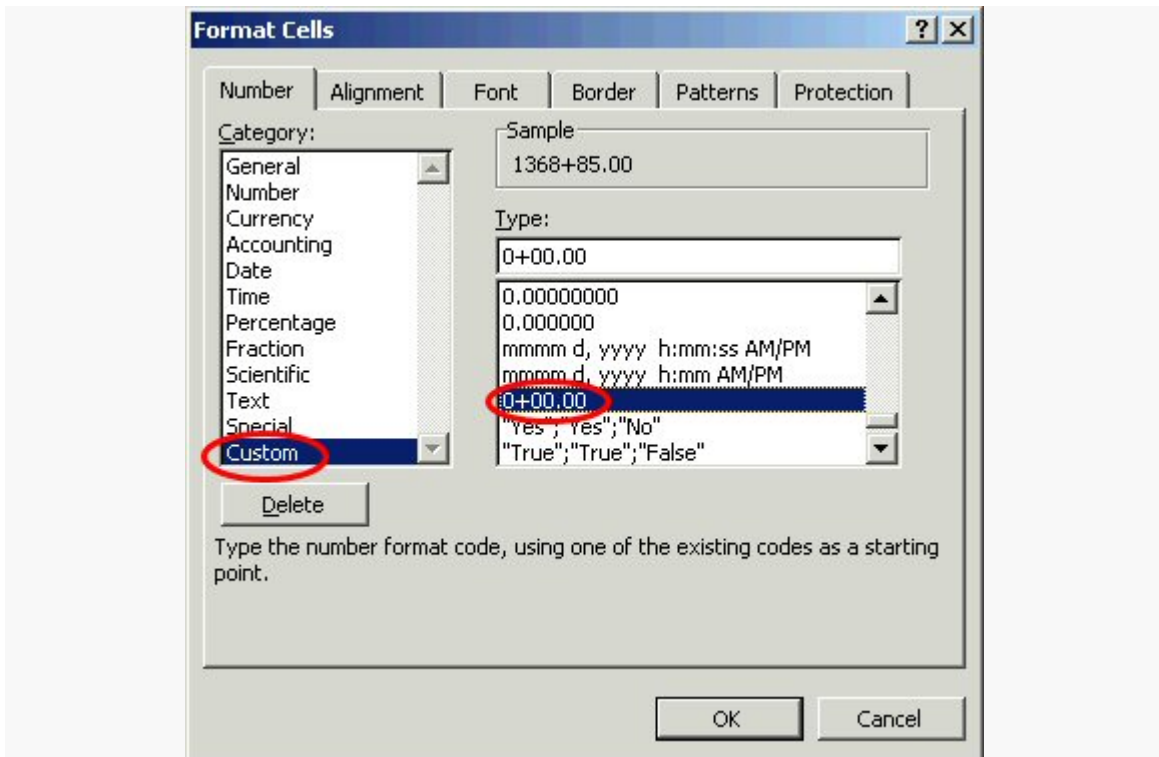
1. In the excel file, highlight (left click and hold it and drag over the stations you want to format) and do a right click over the highlighted cells. Select the **Format Cells** option.

	A	B	C	D	E	F	G
1	RUN	1.6	1.6	1.3	1.0	1.0	1.3
2	Auto Size Columns						
3	Toggle Grid						
4	0.40	8" NON-REINFORCED CONCRETE PAVEMENT					
5	0.30						
6	0.30				LENGTH	WIDTH	AREA
7	0.30	STA.	STA.	LOCATION	FEET	FEET	SQ. YDS
8	0.25	136885	139280	RTE. 94	2395	28	7451.11
9	0.25	136795	136885	RTE. 94	90	26	260
10	0.25	139280	139370	RTE. 94	90	26	260
11	0.25	3890	5510.9	RTE. 94	1621	28	5042.80
12	0.25	3800	3890	RTE. 94	90	26	260
13	0.25	5510.9	5595.9	RTE. 94	85	26	245.56
14	0.25						
15	0.30					TOTALS	13519.4
16	0.30					SE	13519
17	0.25						
18	0.25						
19	0.25						
20	0.25						
21	0.25						
22	0.25						
23	0.25						



Quantab – Inputting Stations

2. Next click on the **Number** tab and choose the **Custom option** under the **Category** column. Then under the **Type** column, choose the **0+00.00** option to format the chosen cells.



3. Now when have formulas set up in your excel file, they should work. The inputted stations will show up as stations even though you inputted the numbers as whole numbers and the formulas that you have set up for the quantity sheet should work.

Quantab – Inputting Stations

C10 = 139370				
	A	B	C	D
1	RUN	1.6	1.6	1.3
2	Auto Size Columns			
3	Toggle Grid			
4	0.40	8" NON-REINFORCED CONCRETE PAVEMENT		
5	0.30			
6	0.30			L
7	0.30	STA.	STA.	LOCATION
8	0.25	1368+85.00	1392+80.00	RTE. 94
9	0.25	1367+95.00	1368+85.00	RTE. 94
10	0.25	1392+80.00	1393+70.00	RTE. 94
11	0.25	38+90.00	55+10.90	RTE. 94
12	0.25	38+00.00	38+90.00	RTE. 94
13	0.25	55+10.90	55+95.90	RTE. 94
14	0.25			
15	0.30			
16	0.30			
17	0.25			