

"THIS MEDIA SHOULD NOT BE CONSIDERED A CERTIFIED DOCUMENT."

**Standard Drawing Guidance**  
(do not show on plans):

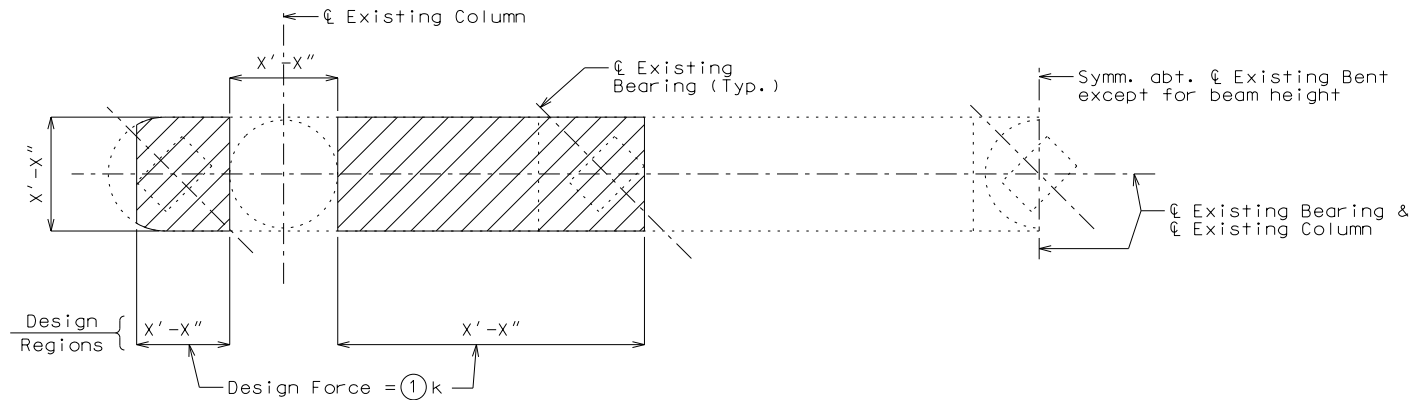
Modify standard drawing details as required.

① Compute factored Design Force

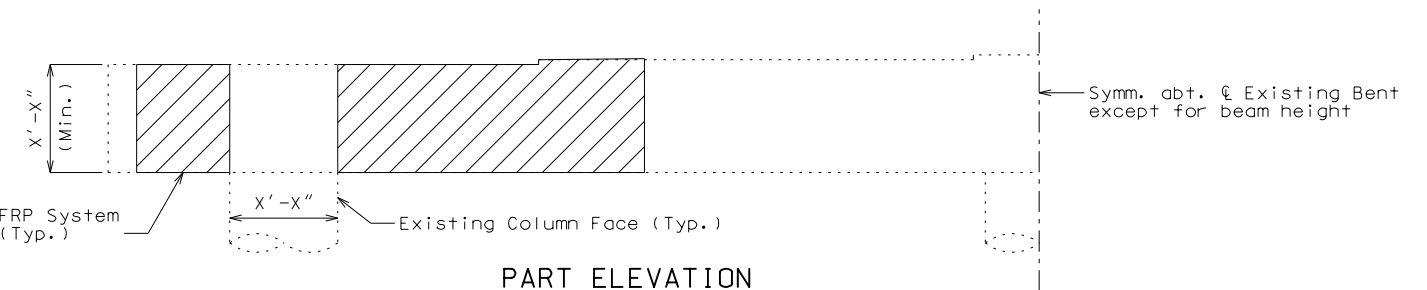
Use pay item Fiber Reinforced Polymer Wrap, \_\_\_sq. foot.

Add the following note to Expansion Bent Details.  
Protective Coating - Concrete Bents and Piers (Epoxy or Urethane) shall not be applied on the FRP system.

DATE PREPARED	
11/19/2020	
ROUTE	STATE
*	MO
DISTRICT	SHEET NO.
BR	*
COUNTY	
*	
JOB NO.	
*	
CONTRACT ID.	
PROJECT NO.	
BRIDGE NO.	
RHB08	



PART PLAN



PART ELEVATION

FRP WRAP AT INT. BENT NO.

Notes:

Design Force is the factored shear force at any cross section in each design region that shall be resisted entirely by the FRP reinforcement.

See special provisions.

DESCRIPTION

DATE

MISSOURI HIGHWAYS AND TRANSPORTATION COMMISSION

105 WEST CAPITOL  
JEFFERSON CITY, MO 65102  
1-888-ASK-MODOT (1-888-275-6636)

IF A SEAL IS PRESENT ON THIS SHEET IT HAS BEEN ELECTRONICALLY SEALED AND DATED.

BENT CAP SHEAR STRENGTHENING USING FRP WRAP

Detailed  
Checked

Note: This drawing is not to scale. Follow dimensions. Sheet No. of