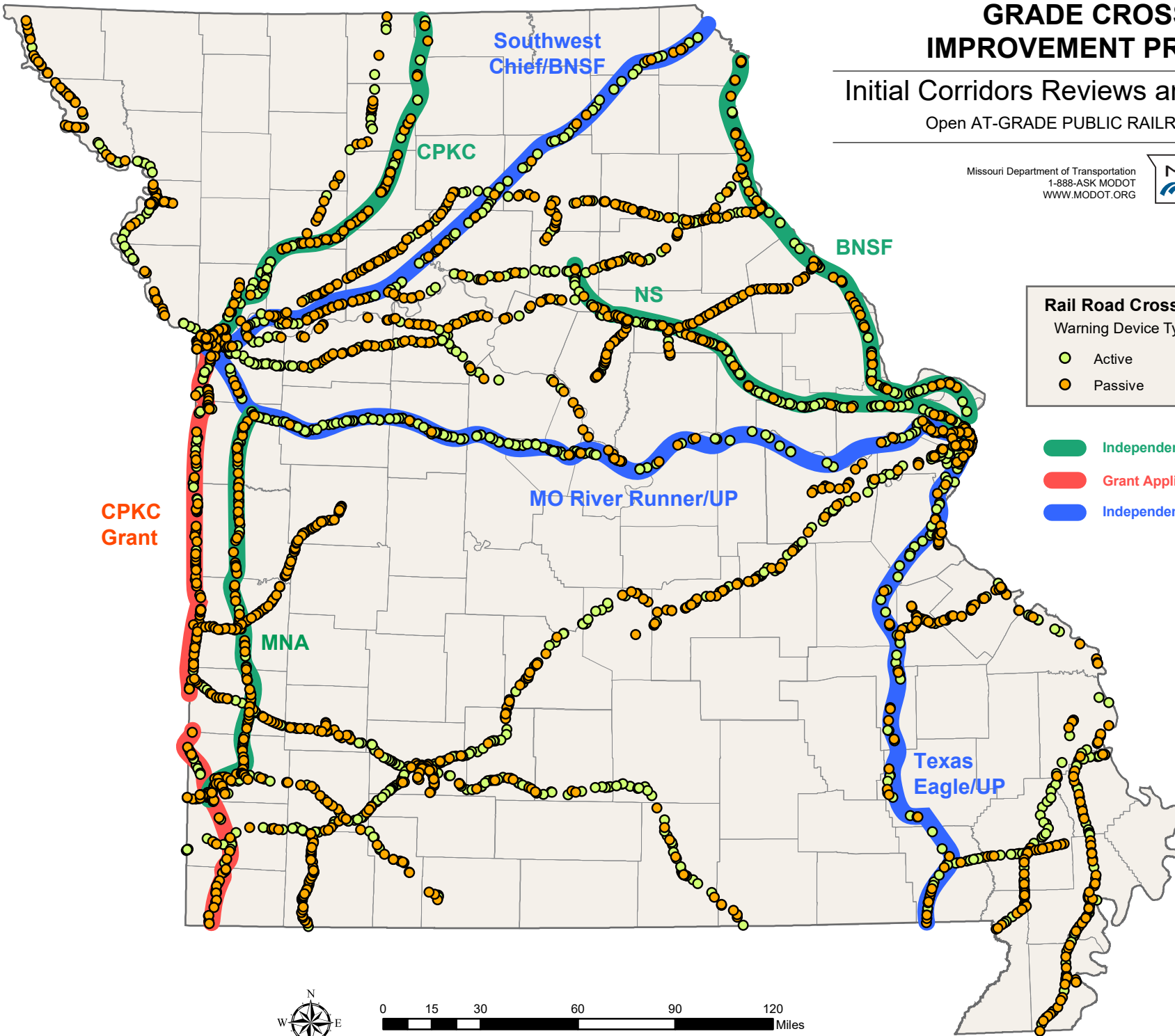


GRADE CROSSING IMPROVEMENT PROGRAM

Initial Corridors Reviews and Improvements

Open AT-GRADE PUBLIC RAILROAD CROSSING

Missouri Department of Transportation
1-888-ASK MODOT
WWW.MODOT.ORG



Rail Road Crossing
Warning Device Type

- Active
- Passive

- Independent Review of Freight Rail to Begin
- Grant Application
- Independent Review Completed

