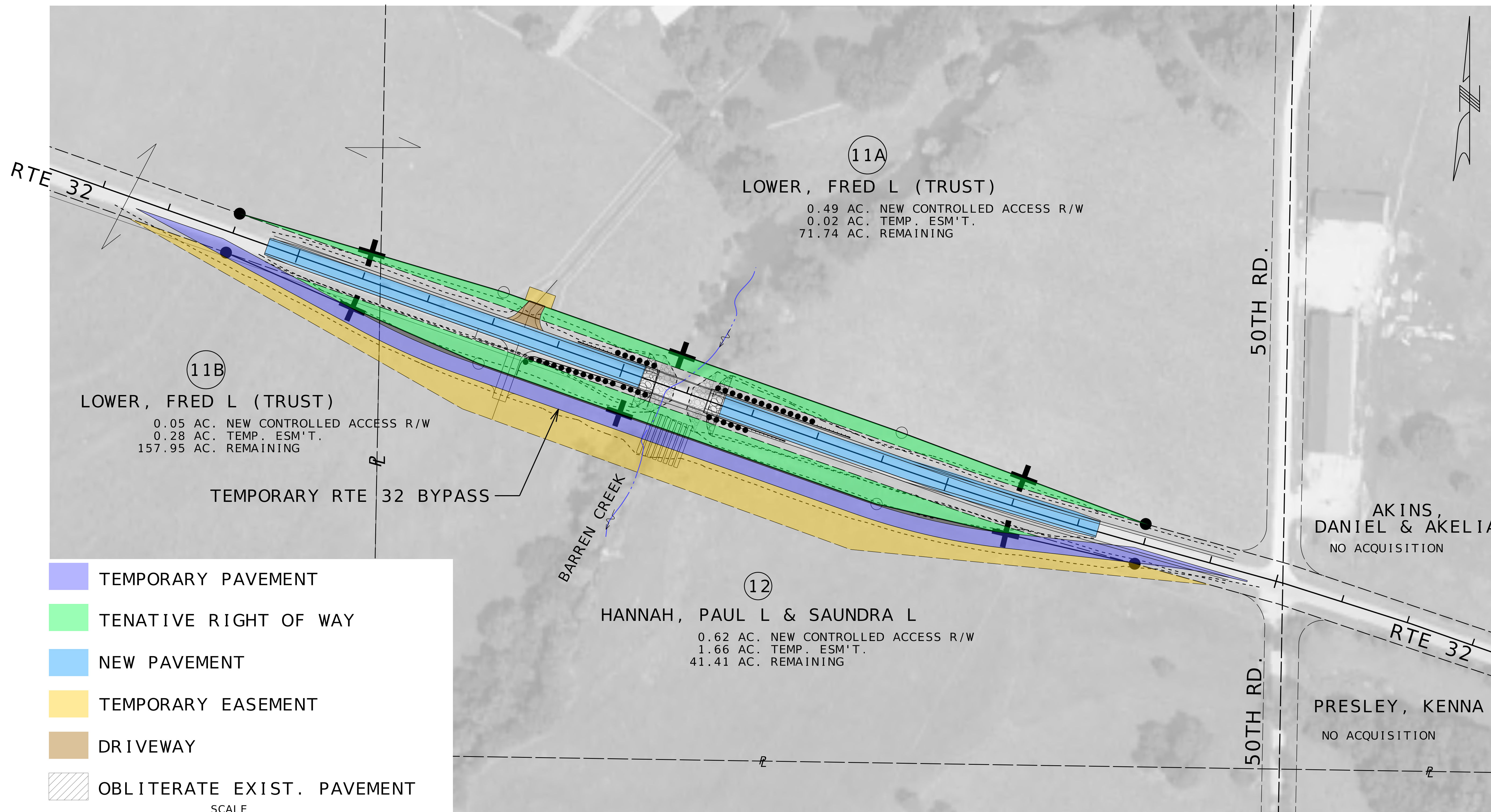
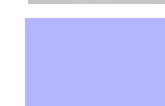







PRELIMINARY PLANS
CEDAR/POLK COUNTY
ROUTE 32



-  TEMPORARY PAVEMENT
-  TENTATIVE RIGHT OF WAY
-  NEW PAVEMENT
-  TEMPORARY EASEMENT
-  DRIVEWAY
-  OBLITERATE EXIST. PAVEMENT

