

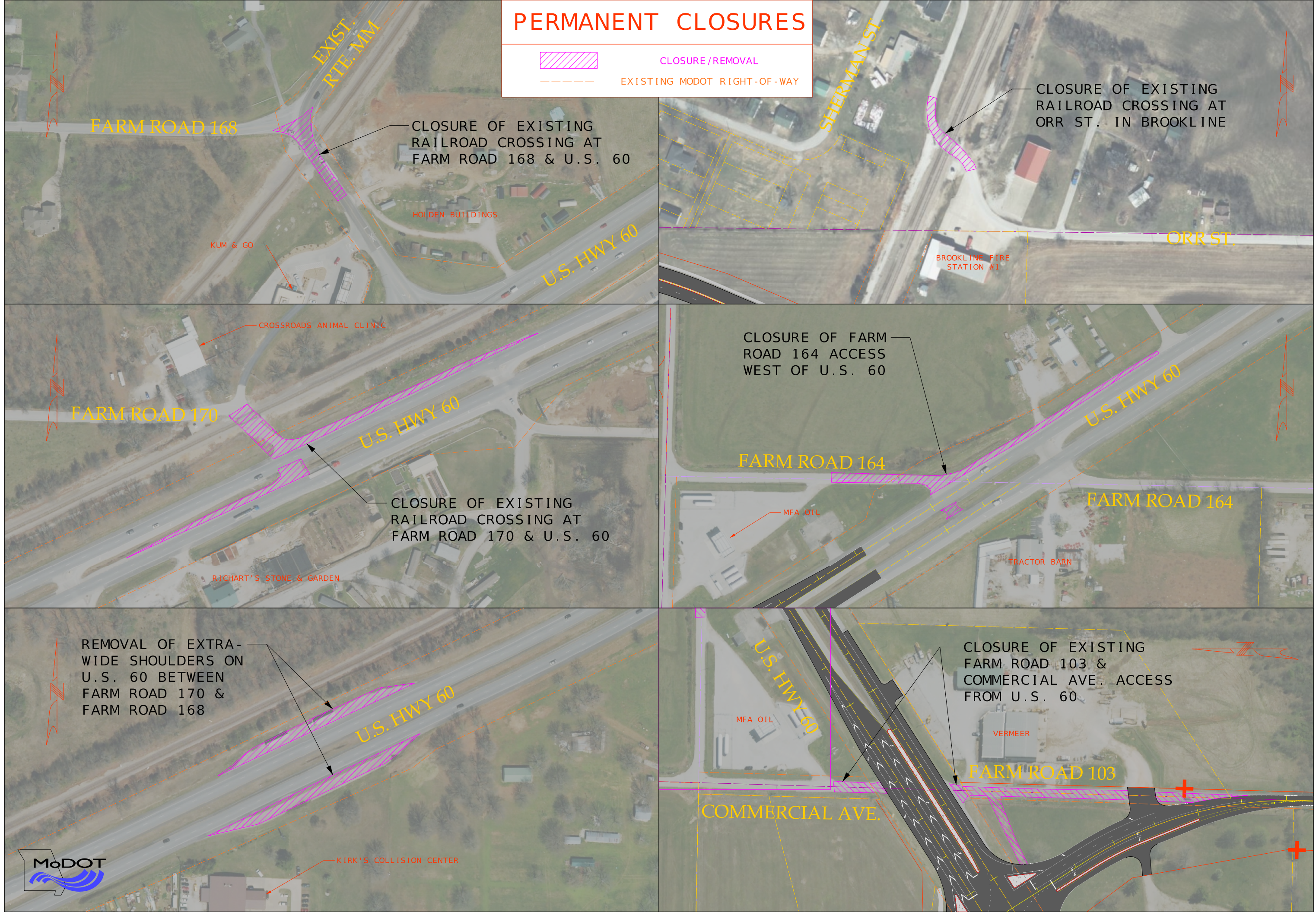
# PERMANENT CLOSURES



CLOSURE/REMOVAL



EXISTING MODOT RIGHT-OF-WAY



FARM ROAD 168

CLOSURE OF EXISTING RAILROAD CROSSING AT FARM ROAD 168 & U.S. 60

HOLDEN BUILDINGS

KUM & GO

U.S. HWY 60

SHERMAN ST.

CLOSURE OF EXISTING RAILROAD CROSSING AT ORR ST. IN BROOKLINE

ORR ST.

BROOKLINE FIRE STATION #1

FARM ROAD 170

CROSSROADS ANIMAL CLINIC

U.S. HWY 60

CLOSURE OF EXISTING RAILROAD CROSSING AT FARM ROAD 170 & U.S. 60

RICHART'S STONE & GARDEN

CLOSURE OF FARM ROAD 164 ACCESS WEST OF U.S. 60

FARM ROAD 164

MFA OIL

FARM ROAD 164

TRACTOR BARN

REMOVAL OF EXTRA-WIDE SHOULDERS ON U.S. 60 BETWEEN FARM ROAD 170 & FARM ROAD 168

U.S. HWY 60

KIRK'S COLLISION CENTER

CLOSURE OF EXISTING FARM ROAD 103 & COMMERCIAL AVE. ACCESS FROM U.S. 60

U.S. HWY 60

MFA OIL

VERMEER

FARM ROAD 103

COMMERCIAL AVE.

