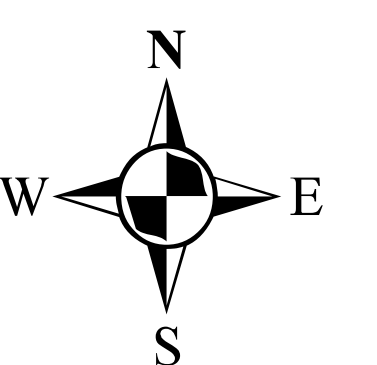


# Functional Classification System

**ST. LOUIS**  
 St. Charles County  
 Franklin County  
 Jefferson County  
 St. Louis County  
 St. Louis City  
 Missouri

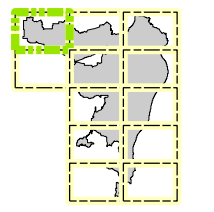
FUNCTIONAL CLASS	
Interstate	
Other Freeway and Expressway	
Other Principal Arterial	
Minor Arterial	
Major Collector	
Minor Collector	
Local	
CITY	
URBAN AREA	



# Functional Classification System

## ST. LOUIS

St. Charles County  
Franklin County  
Jefferson County  
St. Louis County  
St. Louis City  
Missouri



**Functional Class**

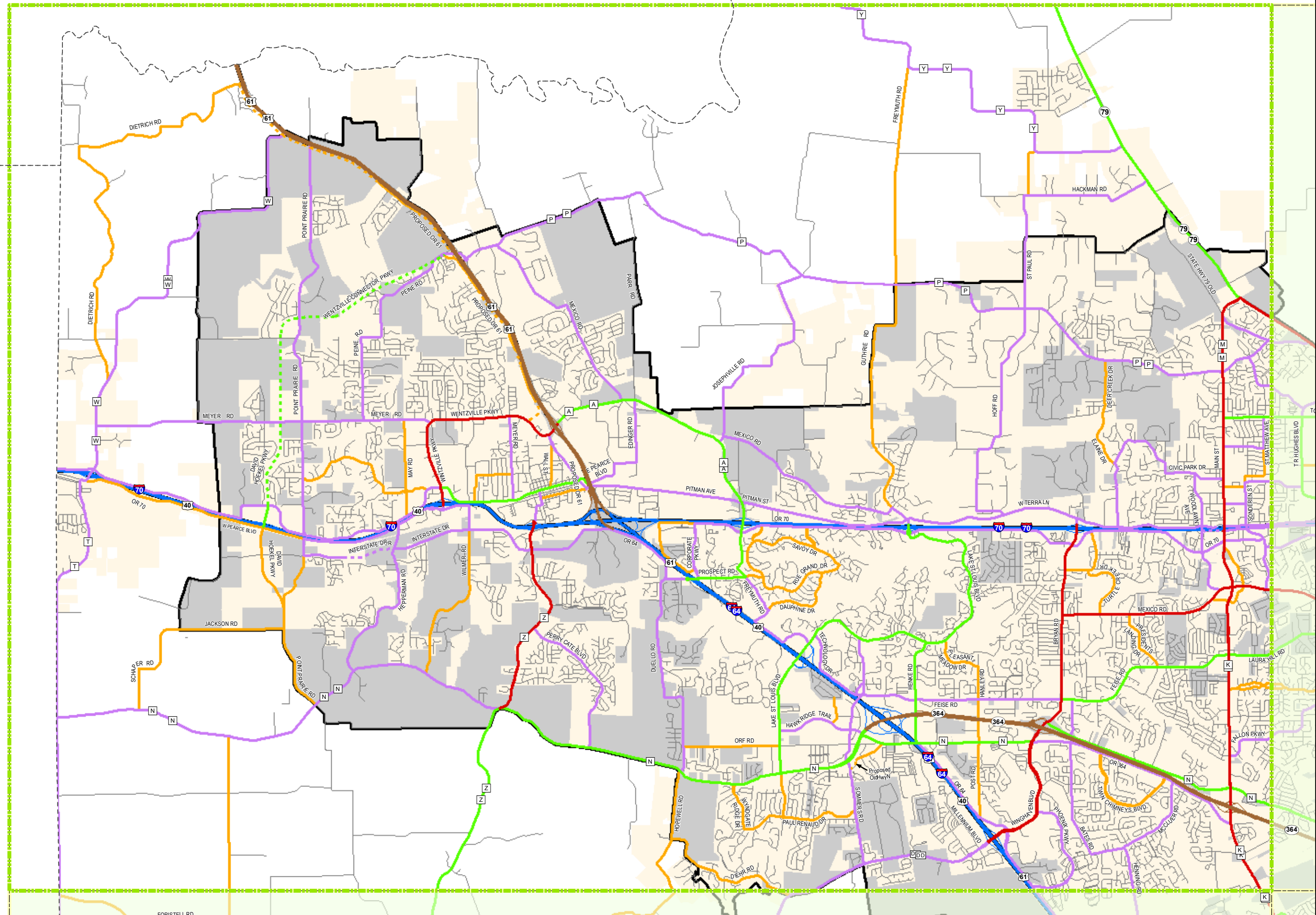
- Interstate
- Freeway and Expressway
- Other Principal Arterial
- Minor Arterial
- Major Collector
- Minor Collector
- Local
- City
- Urban Area



Transportation Planning

105 W. Capitol Ave.  
Jefferson City, MO 65102  
Phone (573) 526-8055  
Fax (573) 526-8052

Approved January 10, 2024

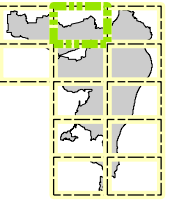


# Functional Classification System

ST. LOUIS

St. Charles County  
Franklin County  
Jefferson County  
St. Louis County  
St. Louis City  
Missouri

Page  
2



## Functional Class

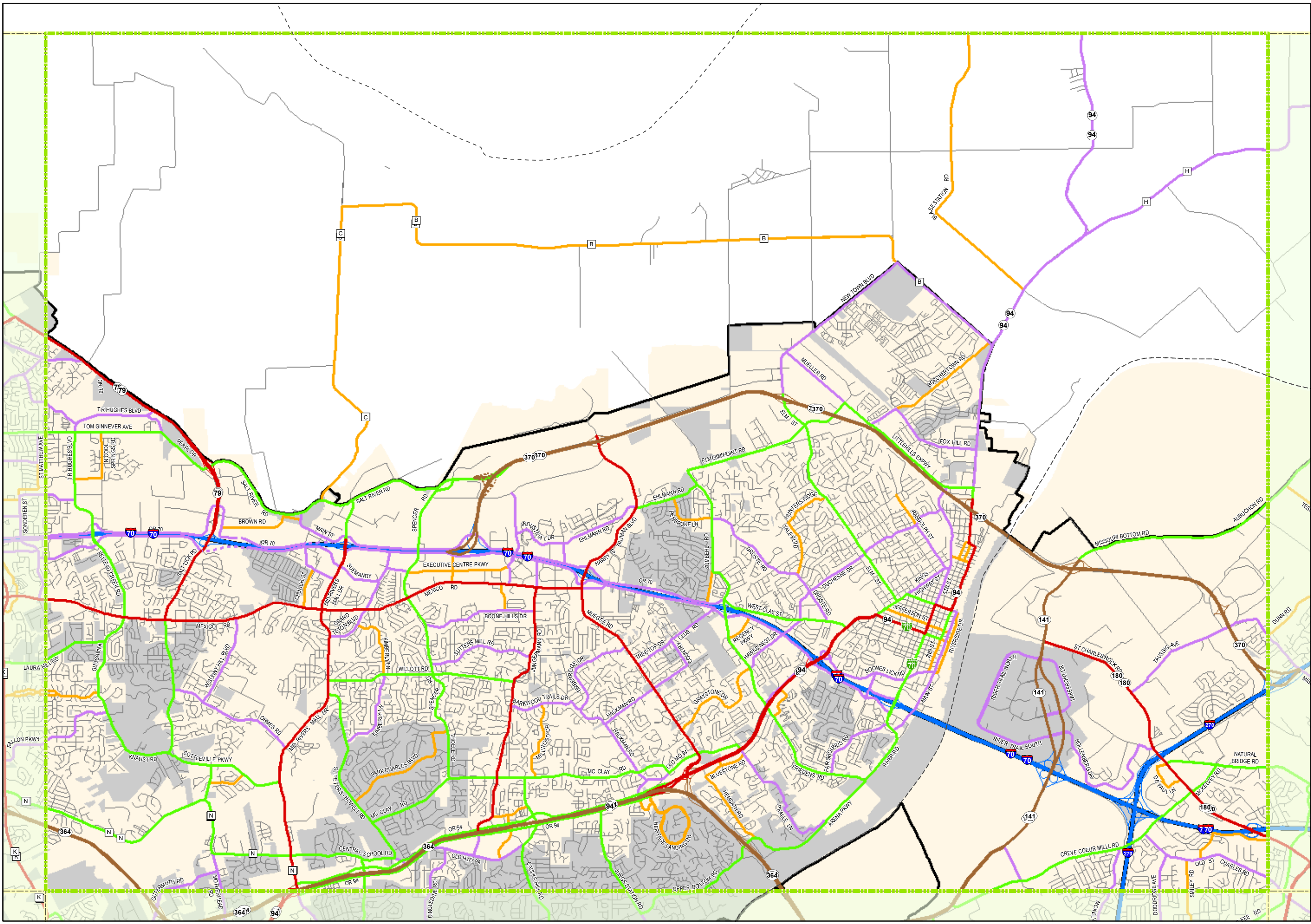
- Interstate
- Freeway and Expressway
- Other Principal Arterial
- Minor Arterial
- Major Collector
- Minor Collector
- Local
- City
- Urban Area



Transportation Planning

105 W. Capitol Ave.  
Jefferson City, MO 65102  
Phone (573) 526-8055  
Fax (573) 526-8052

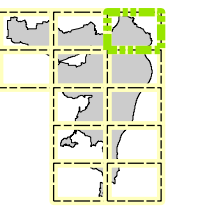
Approved January 10, 2024



# Functional Classification System

## ST. LOUIS

St. Charles County  
Franklin County  
Jefferson County  
St. Louis County  
St. Louis City  
Missouri



**Functional Class**

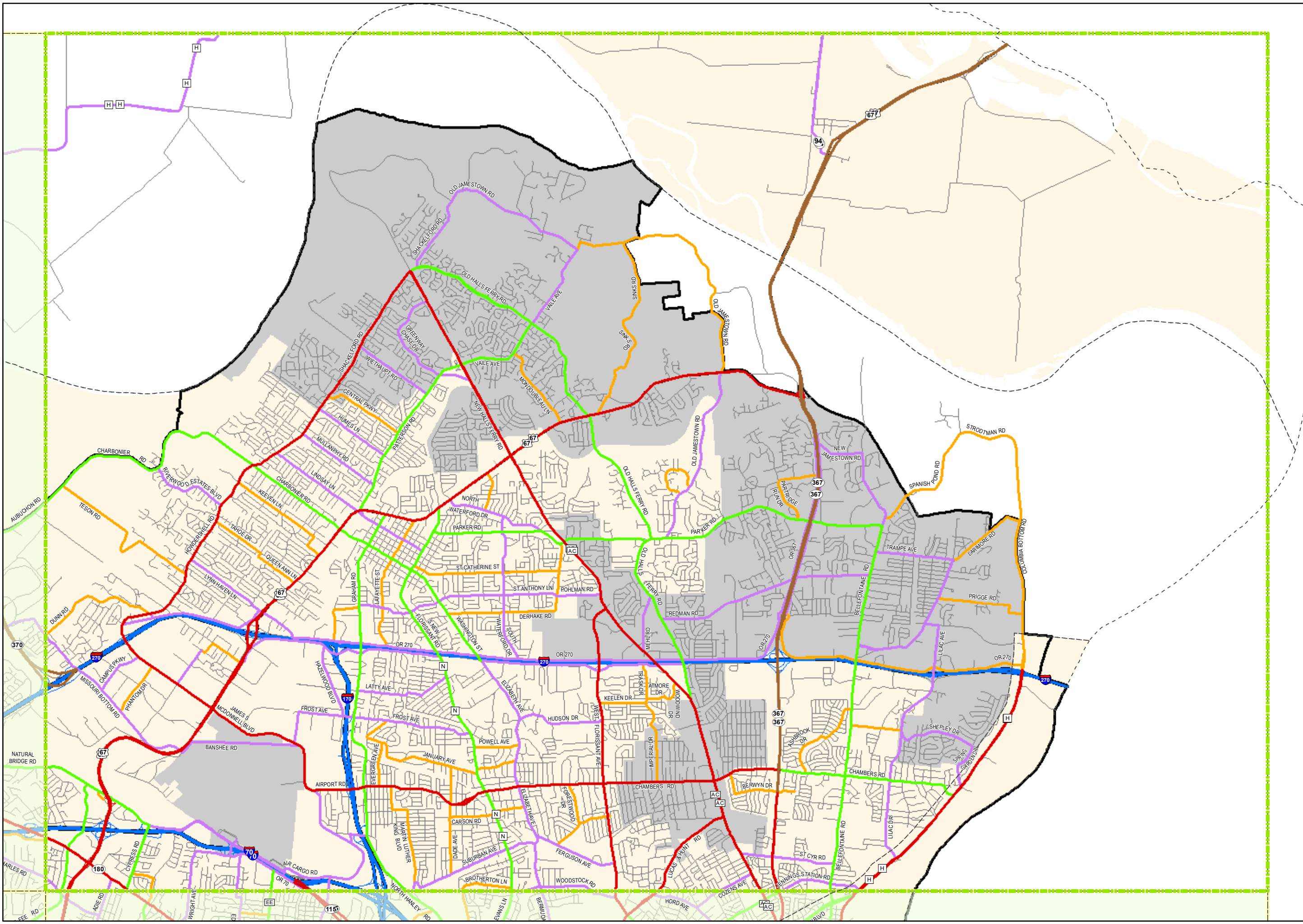
- Interstate
- Freeway and Expressway
- Other Principal Arterial
- Minor Arterial
- Major Collector
- Minor Collector
- Local
- City
- Urban Area



Transportation Planning

105 W. Capitol Ave.  
Jefferson City, MO 65102  
Phone (573) 526-8055  
Fax (573) 526-8052

Approved January 10, 2024

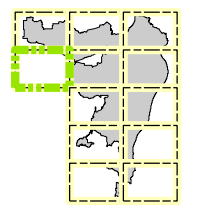


Document Path: Z:\FunctionalClassMaps\FunctionalClassMaps\Functio

# Functional Classification System

## ST. LOUIS

St. Charles County  
Franklin County  
Jefferson County  
St. Louis County  
St. Louis City  
Missouri



**Functional Class**

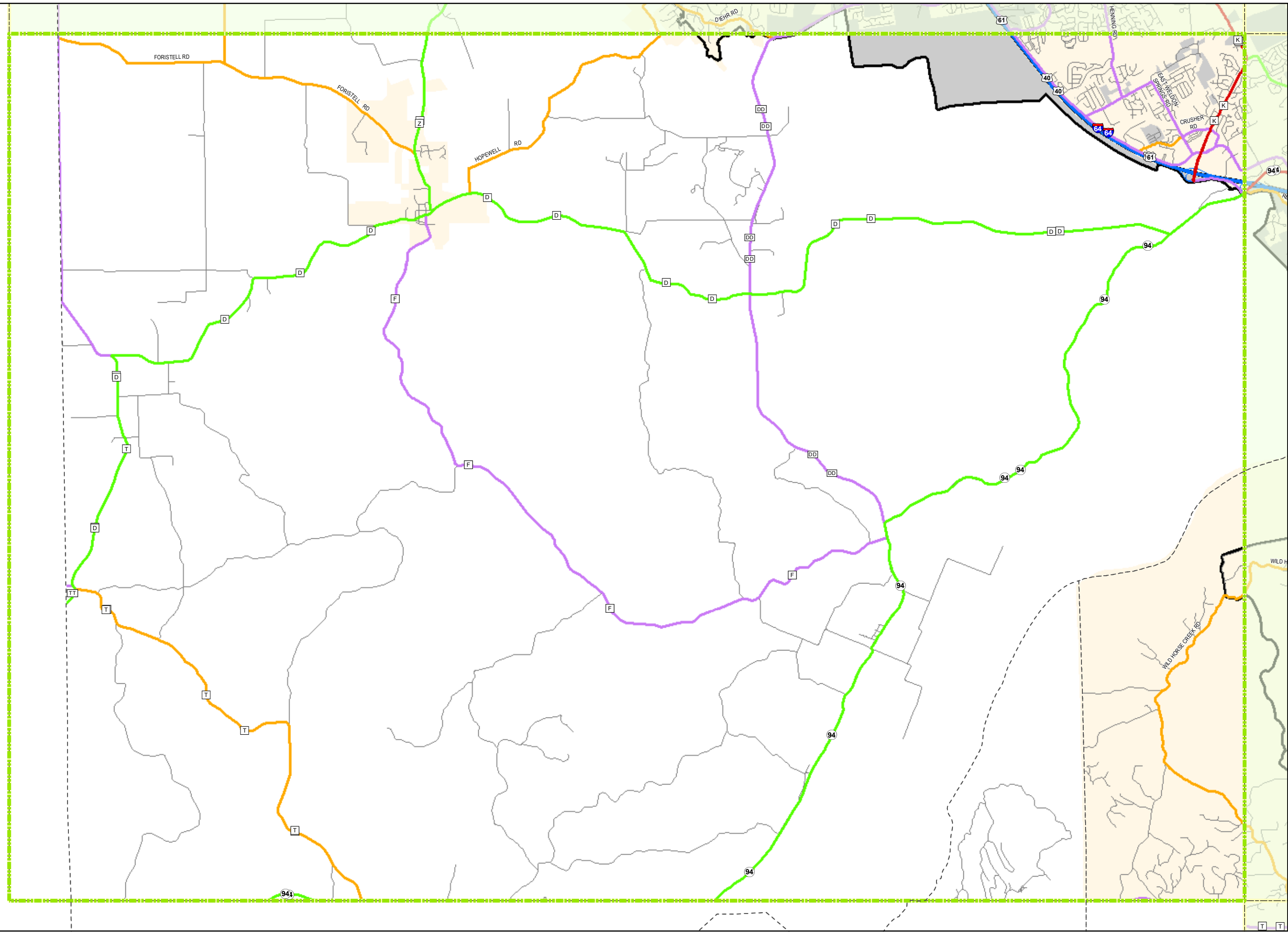
- Interstate
- Freeway and Expressway
- Other Principal Arterial
- Minor Arterial
- Major Collector
- Minor Collector
- Local
- City
- Urban Area



Transportation Planning

105 W. Capitol Ave.  
Jefferson City, MO 65102  
Phone (573) 526-8055  
Fax (573) 526-8052

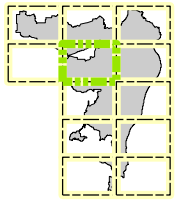
Approved January 10, 2024



# Functional Classification System

## ST. LOUIS

St. Charles County  
Franklin County  
Jefferson County  
St. Louis County  
St. Louis City  
Missouri



### Functional Class

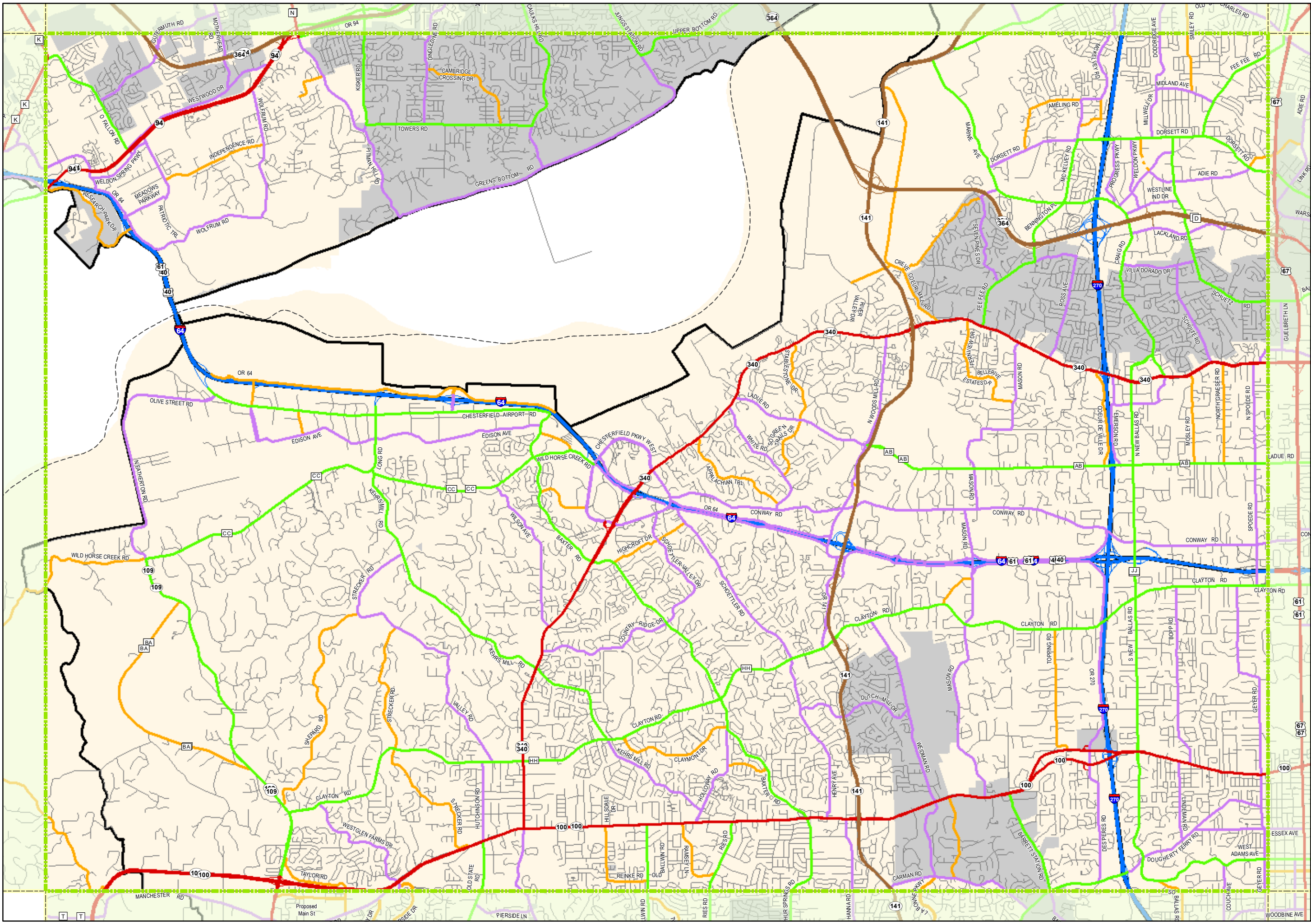
- Interstate
- Freeway and Expressway
- Other Principal Arterial
- Minor Arterial
- Major Collector
- Minor Collector
- Local
- City
- Urban Area



Transportation Planning

105 W. Capitol Ave.  
Jefferson City, MO 65102  
Phone (573) 526-8055  
Fax (573) 526-8052

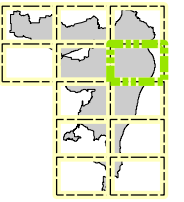
Approved January 10, 2024



# Functional Classification System

## ST. LOUIS

St. Charles County  
Franklin County  
Jefferson County  
St. Louis County  
St. Louis City  
Missouri



### Functional Class

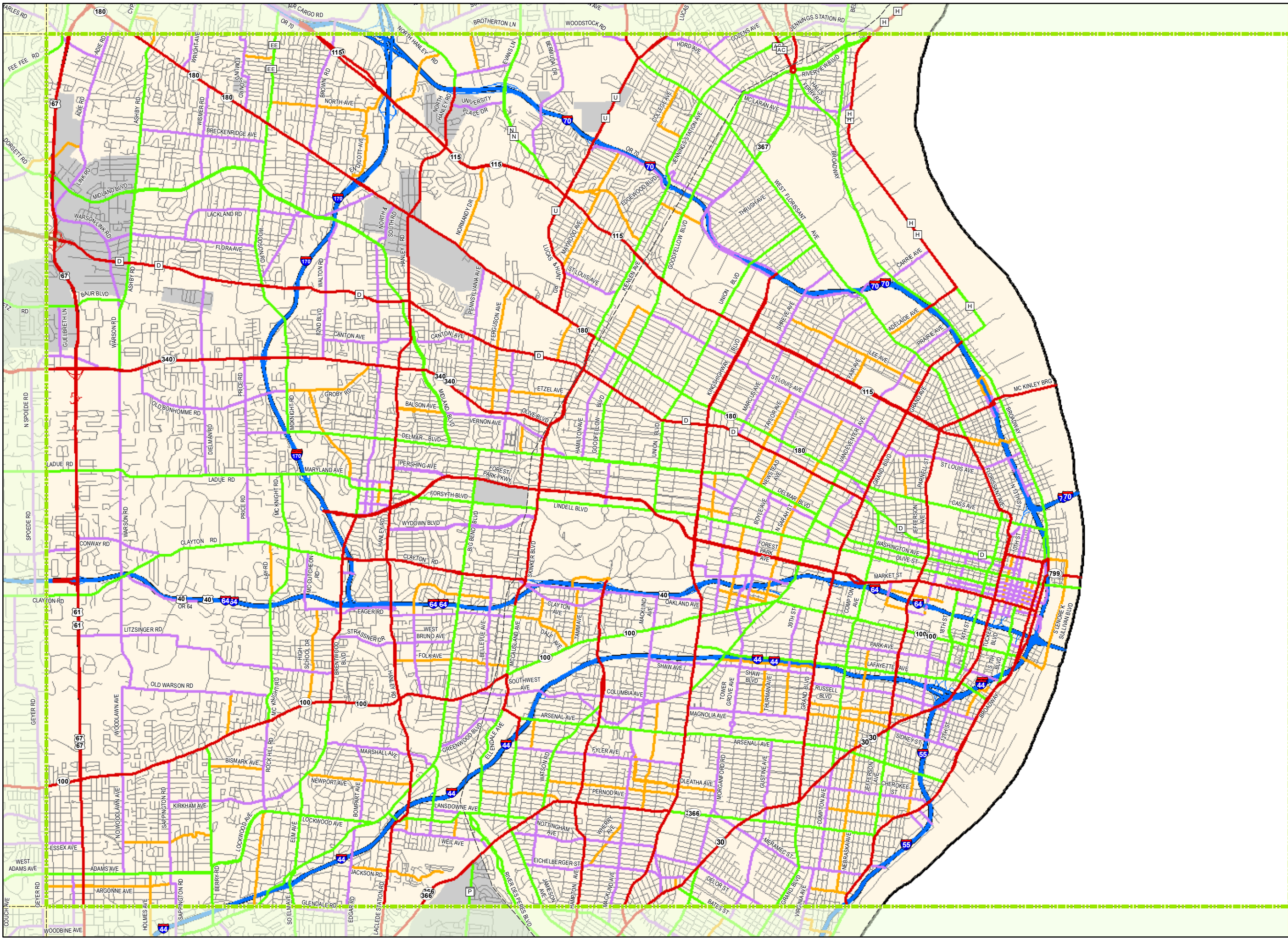
- Interstate
- Freeway and Expressway
- Other Principal Arterial
- Minor Arterial
- Major Collector
- Minor Collector
- Local
- City
- Urban Area



Transportation Planning

105 W. Capitol Ave.  
Jefferson City, MO 65102  
Phone (573) 526-8055  
Fax (573) 526-8052

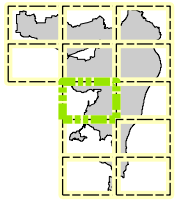
Approved January 10, 2024



# Functional Classification System

ST. LOUIS

St. Charles County  
Franklin County  
Jefferson County  
St. Louis County  
St. Louis City  
Missouri



### Functional Class

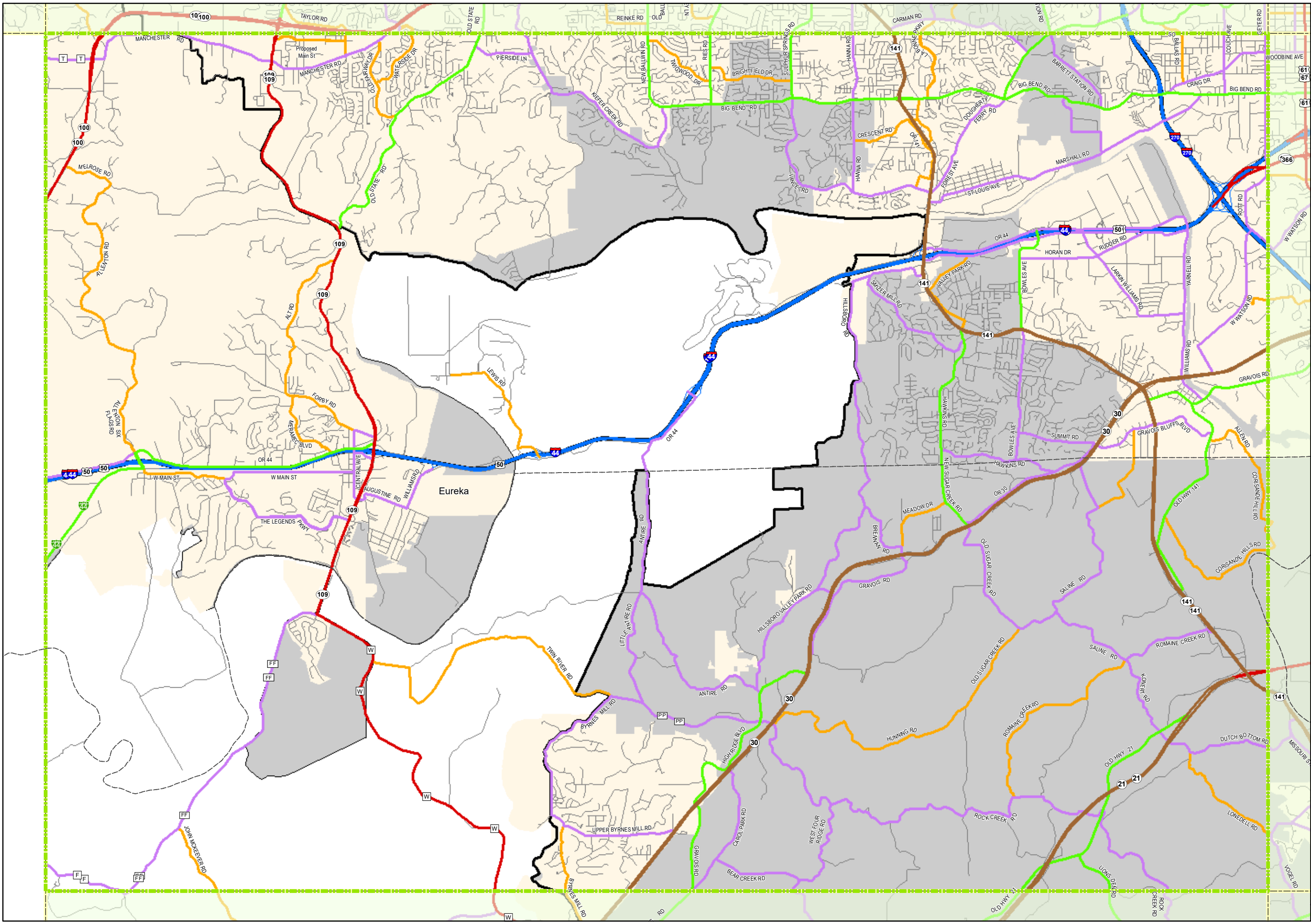
- Interstate
- Freeway and Expressway
- Other Principal Arterial
- Minor Arterial
- Major Collector
- Minor Collector
- Local
- City
- Urban Area



Transportation Planning

105 W. Capitol Ave.  
Jefferson City, MO 65102  
Phone (573) 526-8055  
Fax (573) 526-8052

Approved January 10, 2024





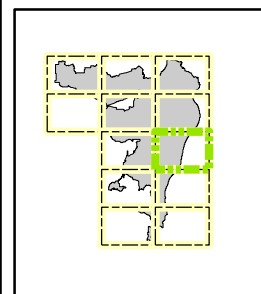
# Functional Classification System

ST. LOUIS

St. Charles County  
Franklin County  
Jefferson County  
St. Louis County  
St. Louis City

Missouri

Page  
8



## Functional Class

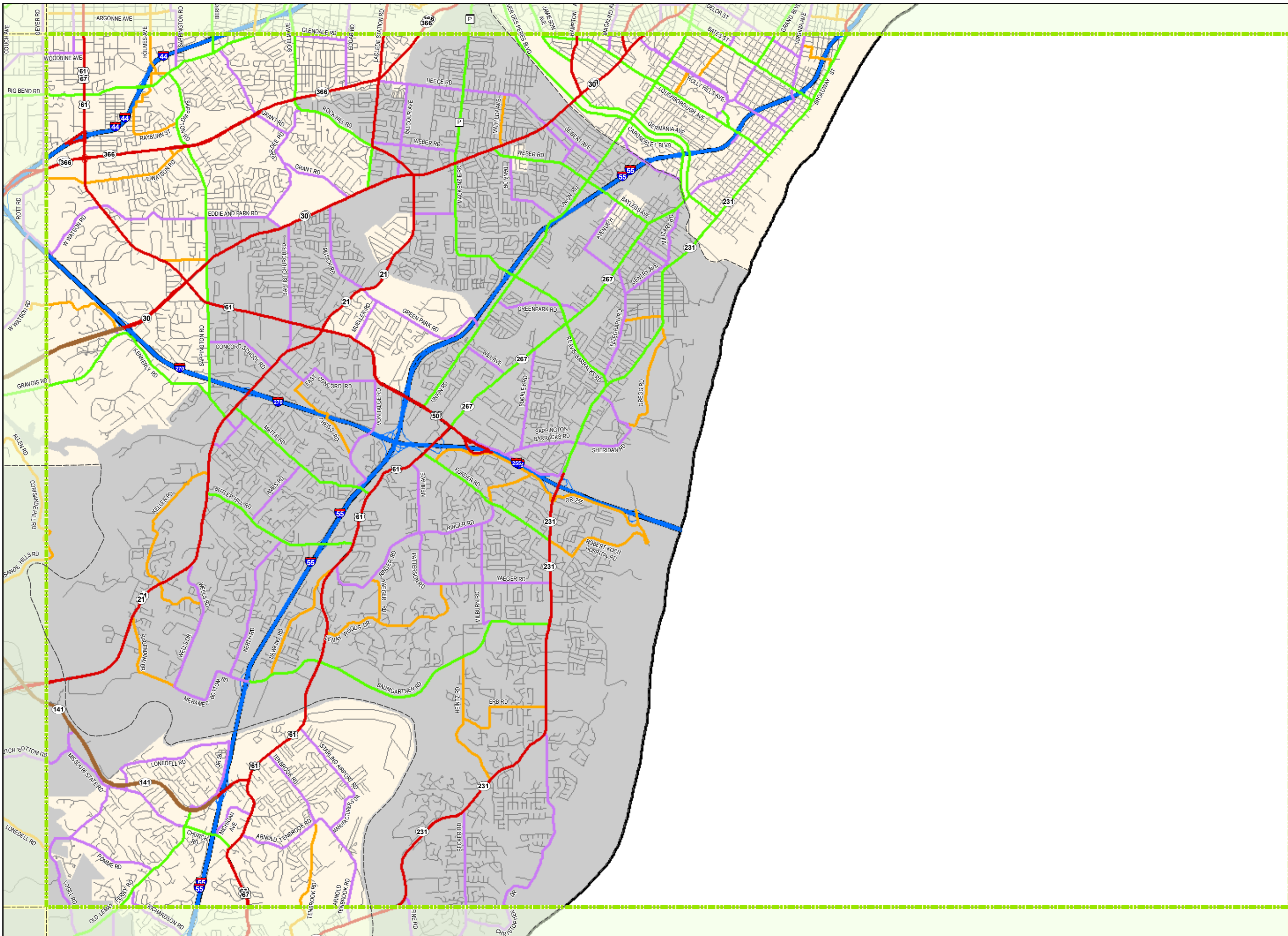
- Interstate
- Freeway and Expressway
- Other Principal Arterial
- Minor Arterial
- Major Collector
- Minor Collector
- Local
- City
- Urban Area



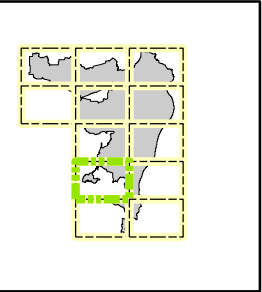
Transportation Planning

105 W. Capitol Ave.  
Jefferson City, MO 65102  
Phone (573) 526-8055  
Fax (573) 526-8052

Approved January 10, 2024



**Functional Classification System**  
**ST. LOUIS**  
 St. Charles County  
 Franklin County  
 Jefferson County  
 St. Louis County  
 St. Louis City  
 Missouri



**Functional Class**

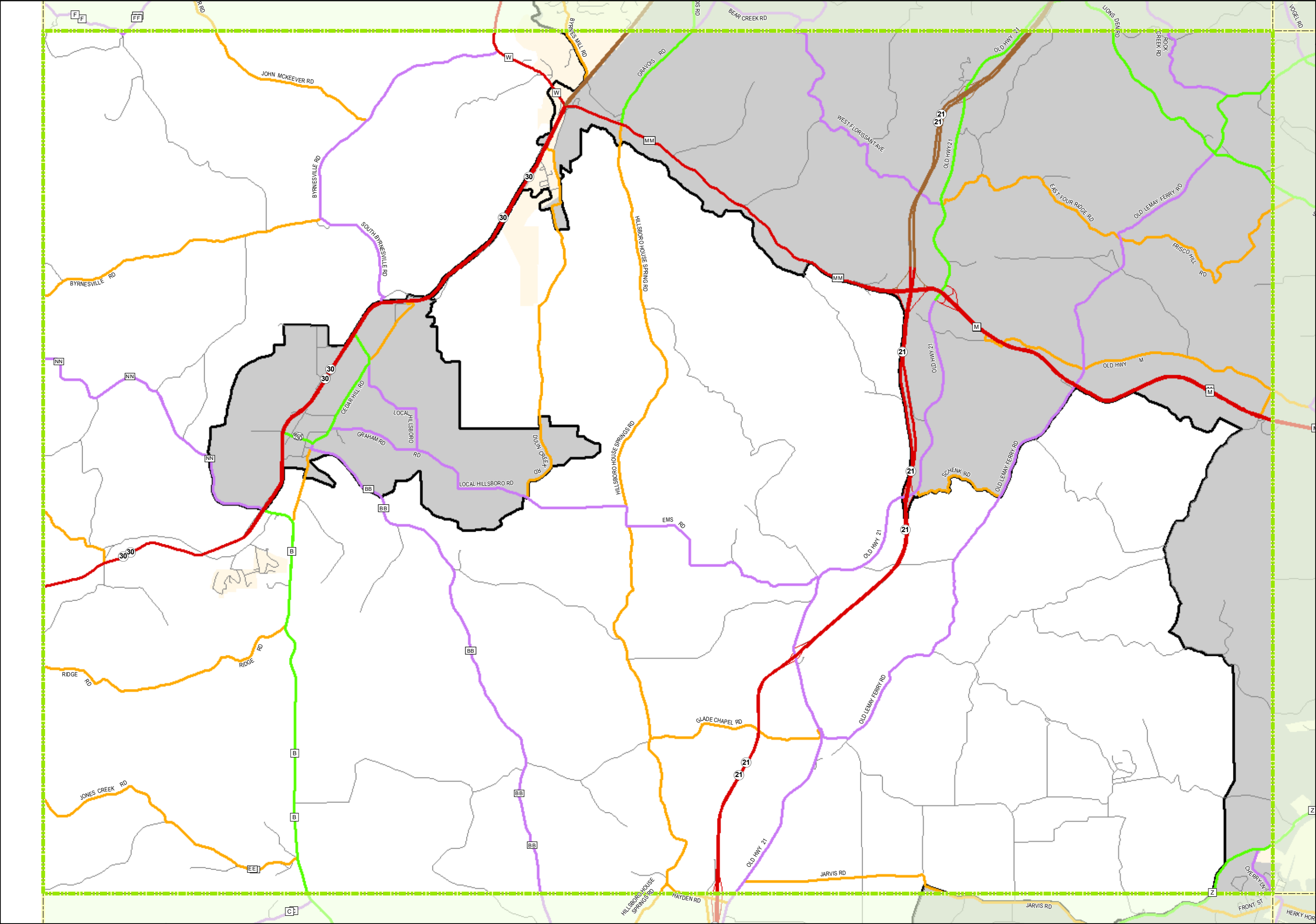
- Interstate
- Freeway and Expressway
- Other Principal Arterial
- Minor Arterial
- Major Collector
- Minor Collector
- Local
- City
- Urban Area



Transportation Planning

105 W. Capitol Ave.  
 Jefferson City, MO 65102  
 Phone (573) 526-8055  
 Fax (573) 526-8052

Approved January 10, 2024



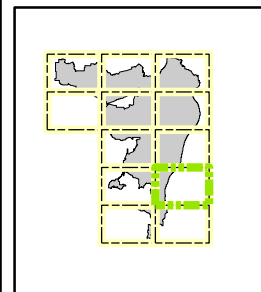
# Functional Classification System

**ST. LOUIS**

St. Charles County  
Franklin County  
Jefferson County  
St. Louis County  
St. Louis City

**Missouri**

Page  
**10**



**Functional Class**

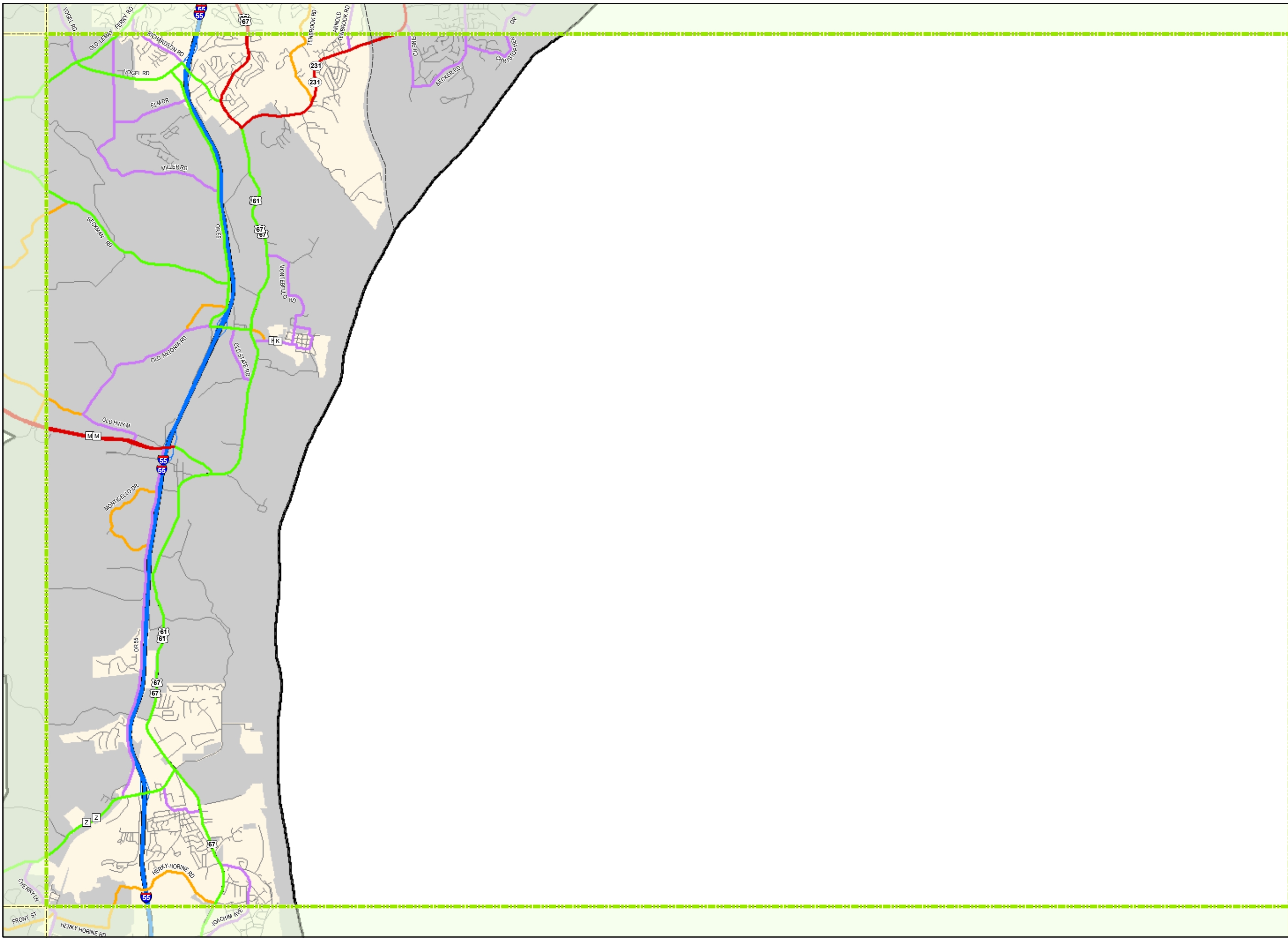
	Interstate
	Freeway and Expressway
	Other Principal Arterial
	Minor Arterial
	Major Collector
	Minor Collector
	Local
	City
	Urban Area



Transportation Planning

105 W. Capitol Ave.  
Jefferson City, MO 65102  
Phone (573) 526-8055  
Fax (573) 526-8052

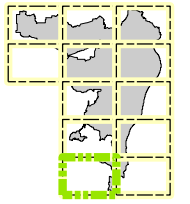
Approved January 10, 2024



# Functional Classification System

ST. LOUIS

St. Charles County  
Franklin County  
Jefferson County  
St. Louis County  
St. Louis City  
Missouri



### Functional Class

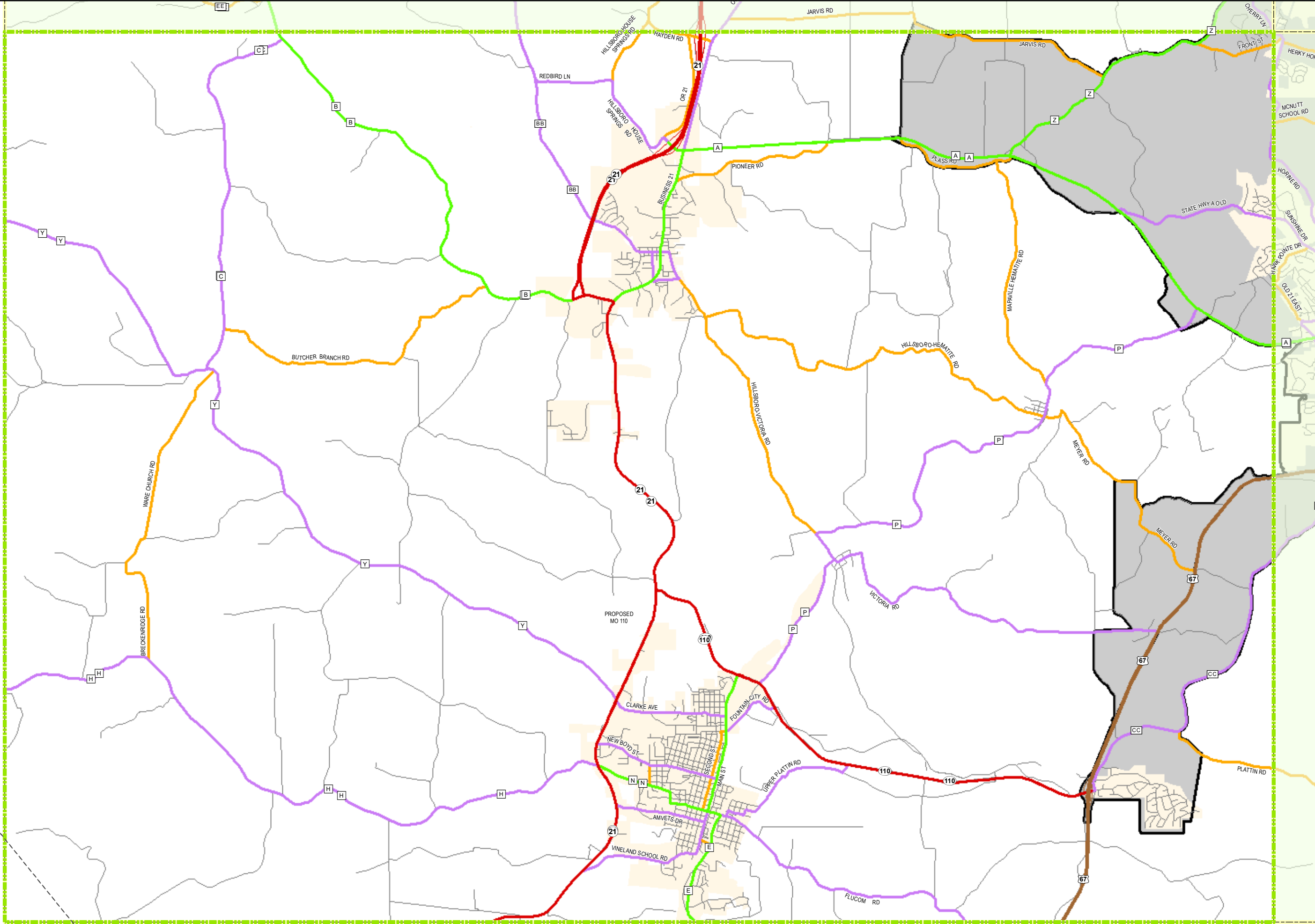
- Interstate
- Freeway and Expressway
- Other Principal Arterial
- Minor Arterial
- Major Collector
- Minor Collector
- Local
- City
- Urban Area



Transportation Planning

105 W. Capitol Ave.  
Jefferson City, MO 65102  
Phone (573) 526-8055  
Fax (573) 526-8052

Approved January 10, 2024

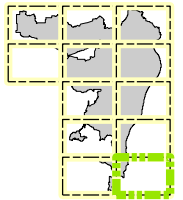


# Functional Classification System

## ST. LOUIS

St. Charles County  
Franklin County  
Jefferson County  
St. Louis County  
St. Louis City

Missouri



### Functional Class

- Interstate
- Freeway and Expressway
- Other Principal Arterial
- Minor Arterial
- Major Collector
- Minor Collector
- Local
- City
- Urban Area



Transportation Planning

105 W. Capitol Ave.  
Jefferson City, MO 65102  
Phone (573) 526-8055  
Fax (573) 526-8052

Approved January 10, 2024

