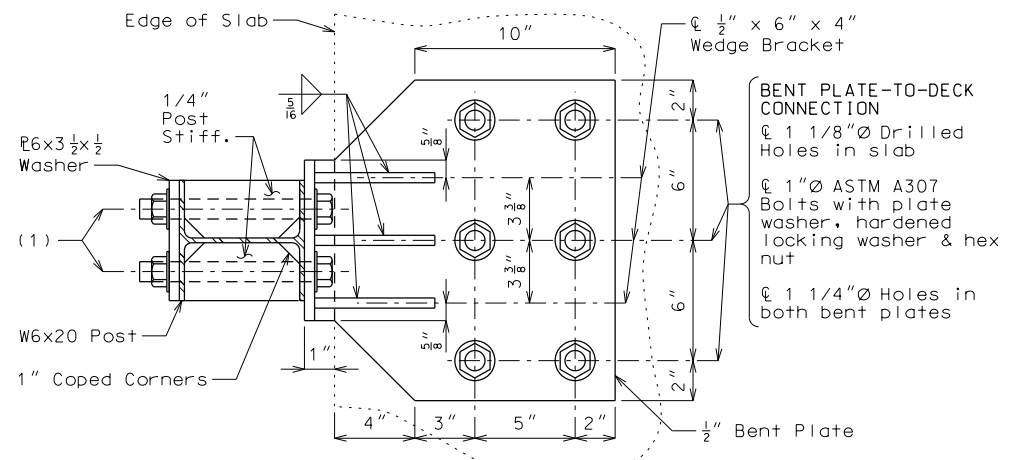
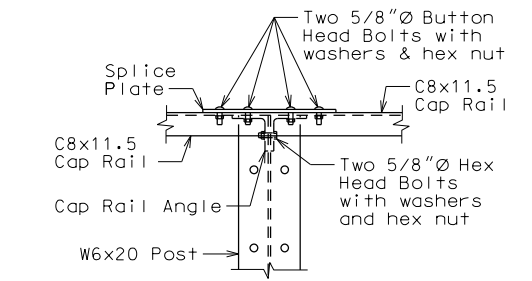


"THIS MEDIA SHOULD NOT BE CONSIDERED A CERTIFIED DOCUMENT."

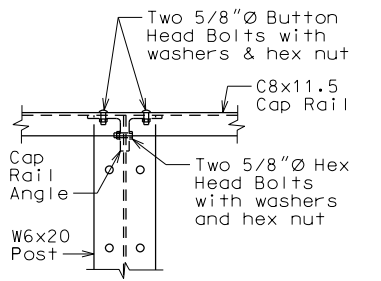


- (1) POST-TO-BENT PLATE CONNECTION
 ☉ Two 1"Ø ASTM F3125 Grade A325 Type 1 Bolts with hardened washers and hex nuts
 ☉ 1 1/16" x 1 1/2" Vertical Slotted Hole in both upper post flanges
 ☉ 1 1/16"Ø Hole in washer plate, inside lower post flange and both bent plates

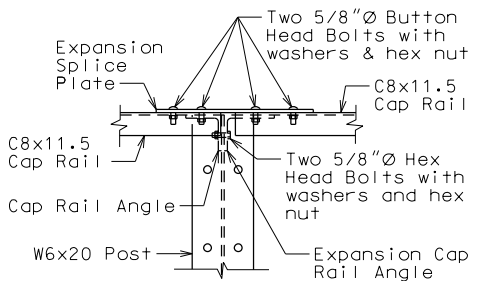
SECTION C-C



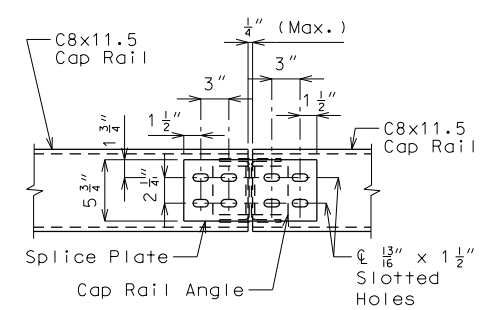
ELEVATION OF TYPICAL SPLICE



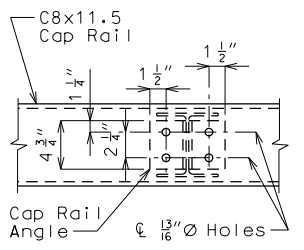
ELEVATION OF RAIL POST CONNECTION



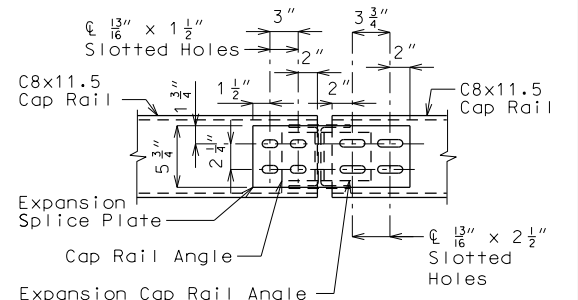
ELEVATION OF EXPANSION SPLICE



PLAN OF TYPICAL SPLICE

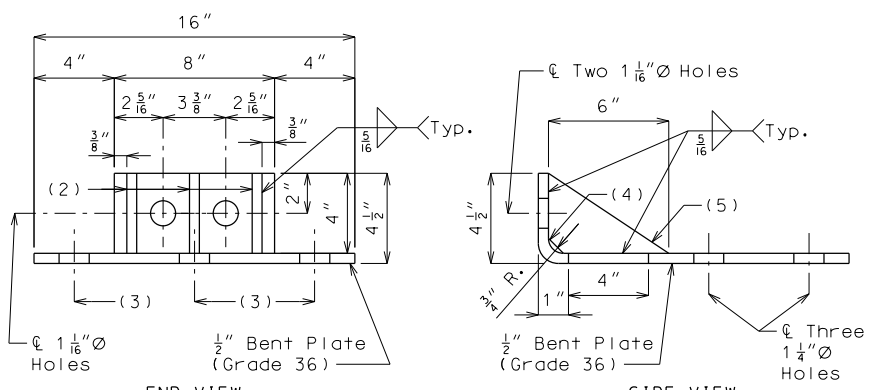


PLAN OF RAIL POST CONNECTION



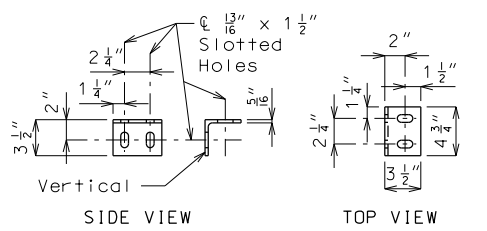
PLAN OF EXPANSION SPLICE

Expansion slots shall be on the same side of post as the expansion joint.

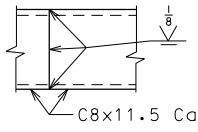


- (2) 1/2" x 6" x 4" Wedge Bracket
 (3) ☉ Two 1 1/4"Ø Holes
 (4) 3/4" Coped Corners
 (5) Three 1 1/2" x 6" x 4" Wedge Brackets

BENT PLATE AND WEDGE BRACKET

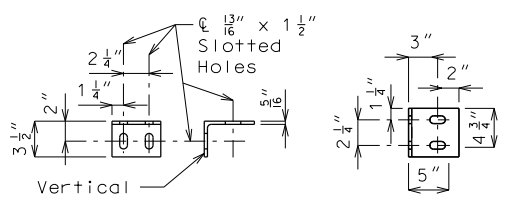


CAP RAIL ANGLE
 L3 1/2 x 3 1/2 x 1/16

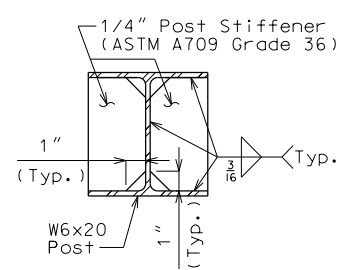


OPTIONAL SPLICE

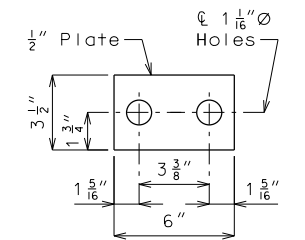
One shop or field splice per panel may be provided at any location.



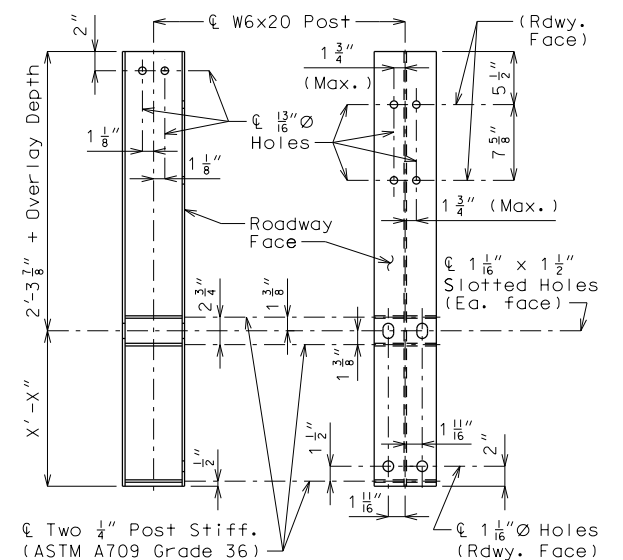
EXPANSION CAP RAIL ANGLE
 L5 x 3 1/2 x 1/16



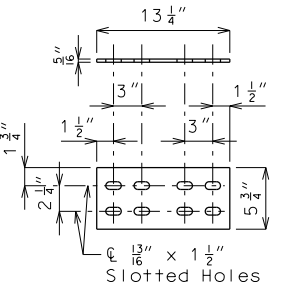
POST STIFFENERS



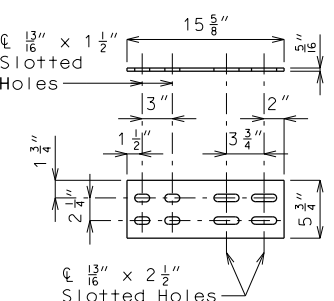
WASHER PLATE



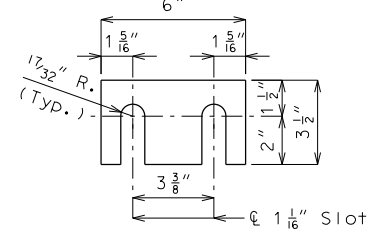
DETAILS OF POST



SPLICE PLATE



EXPANSION SPLICE PLATE



SHIM PLATE

Shim plates 6 x 3 x 1/16-inch may be used between the W6x20 post and 1/2-inch bent plate connection as required for horizontal alignment.

Shim plates may vary in thickness from 1/16 inch to the thickness required, and may be used in multiples.

Shim plates shall be galvanized after fabrication.

DATE PREPARED 7/27/2020	
ROUTE *	STATE MO
DISTRICT BR	SHEET NO. *
COUNTY *	
JOB NO. *	
CONTRACT ID. *	
PROJECT NO. *	
BRIDGE NO. THRIE 3B	
DESCRIPTION	DATE

MISSOURI HIGHWAYS AND TRANSPORTATION COMMISSION
 105 WEST CAPITOL JEFFERSON CITY, MO 65102
 1-888-ASK-MODOT (1-888-275-6636)

