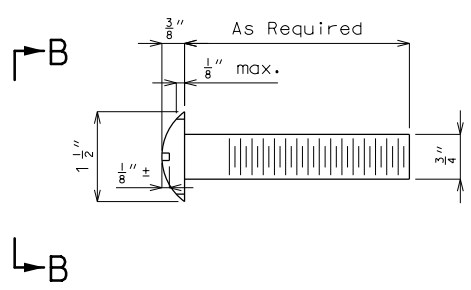
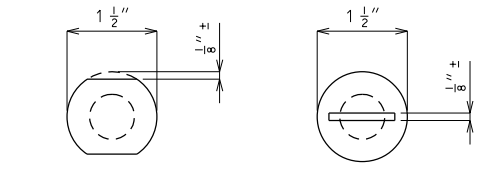


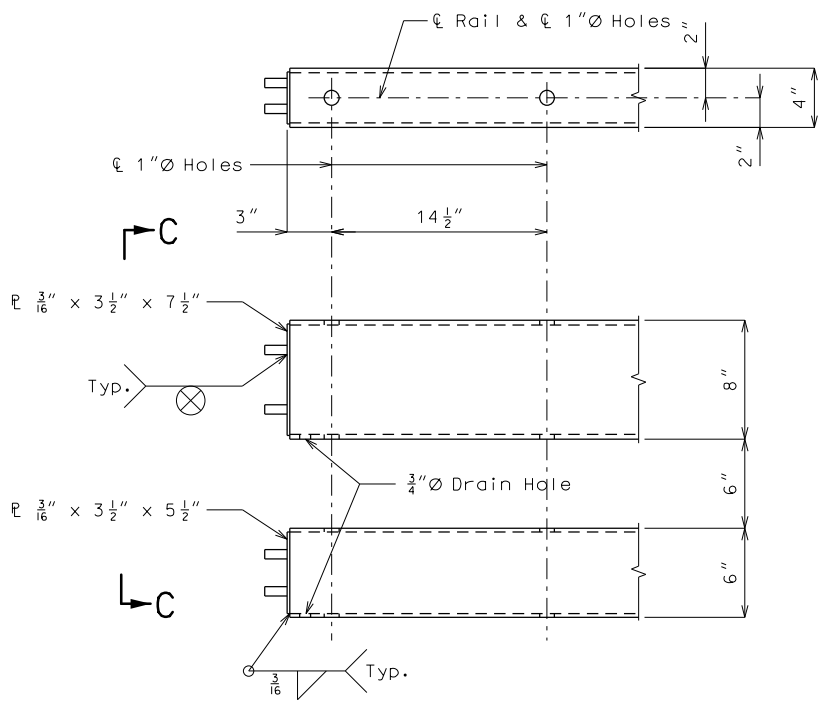
"THIS MEDIA SHOULD NOT BE CONSIDERED A CERTIFIED DOCUMENT."



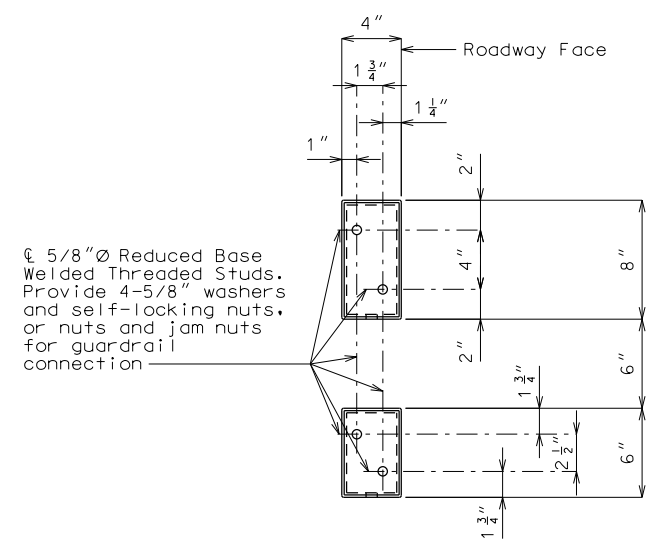
DETAIL OF $\frac{3}{4}$ " \varnothing ROUND HEAD BOLT



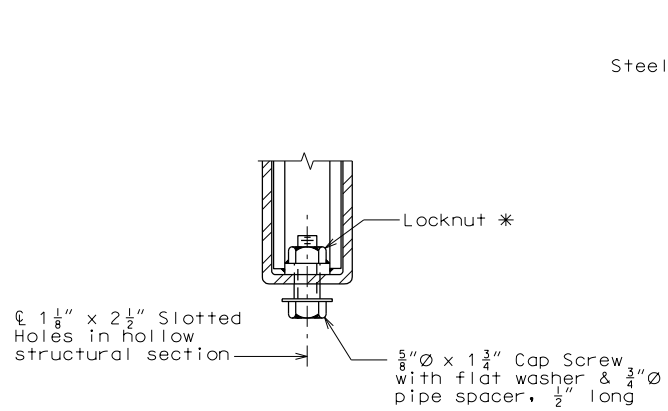
VIEW B-B
Without Slot or Recess With Slot



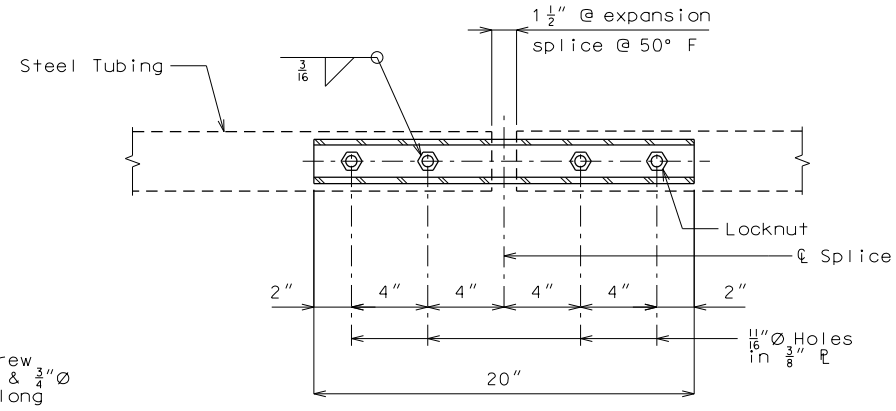
END OF RAIL DETAILS



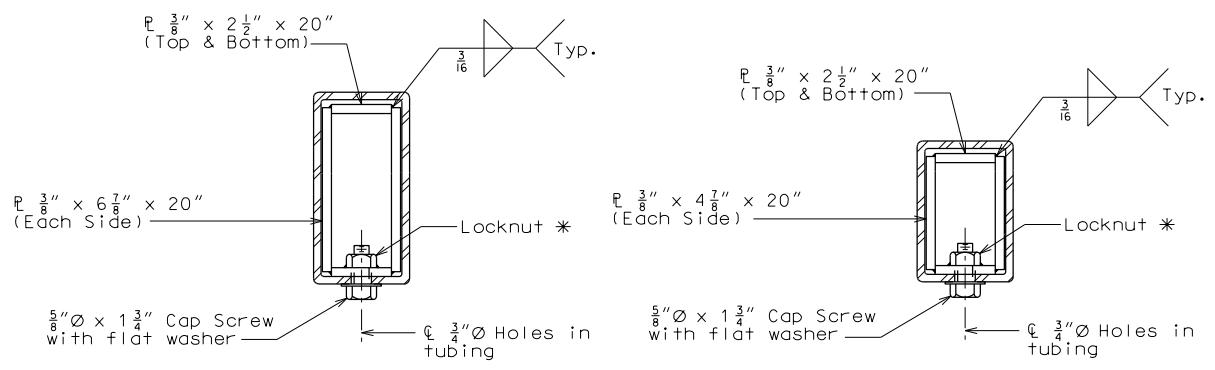
SECTION C-C



RAIL SPLICE CONNECTION AT EXPANSION JOINT



PLAN BOTTOM SPLICE TYPICAL



TOP RAIL BOTTOM RAIL

SECTIONS AT RAIL SPLICE

Notes:

- Fabrication of structural steel shall be in accordance with Sec 712 and 1080.
- Hollow structural sections shall be in accordance with ASTM designation A 500 Grade B Structural Steel Tubing and shall meet the longitudinal CVN requirements of 15 ft-lbs at 0° F. see Sec 1080 for reporting.
- All other steel shapes and plates shall be in accordance with AASHTO M 270 Grade 36 except posts shall be in accordance with AASHTO M 270, Grade 50.
- All anchor bolts shall be ASTM F1554 Grade 36 with ASTM A563 Grade A hex nuts and ASTM F436 hardened washers.
- Bolts, cap screws, and nuts shall be in accordance with ASTM designation A307 except for high strength bolts, nuts and washers noted which shall be in accordance with AASHTO M 164.
- All anchor bolts, bolts, nuts, cap screws, washers and lock washers shall be galvanized in accordance with AASHTO M 232 (ASTM A153), Class C.
- All posts, railing, rail splices, and angles shall be galvanized after shop fabrication in accordance with AASHTO M 111 and ASTM A385. Galvanized rail shall not be painted.
- Railing shall be in accordance with Sec 713, except as noted.
- All field drilled holes shall be coated with an approved zinc rich paint before erection.
- HSS = Hollow Structural Section

* Tack weld nut to plate.

DATE PREPARED 7/27/2020	
ROUTE *	STATE MO
DISTRICT BR	SHEET NO. *
COUNTY *	
JOB NO. *	
CONTRACT ID.	
PROJECT NO.	
BRIDGE NO. TTR3	
DESCRIPTION	DATE

MISSOURI HIGHWAYS AND TRANSPORTATION COMMISSION

105 WEST CAPITOL
JEFFERSON CITY, MO 65102
1-888-ASK-MODOT (1-888-275-6636)

IF A SEAL IS PRESENT ON THIS SHEET IT HAS BEEN ELECTRONICALLY SEALED AND DATED.