

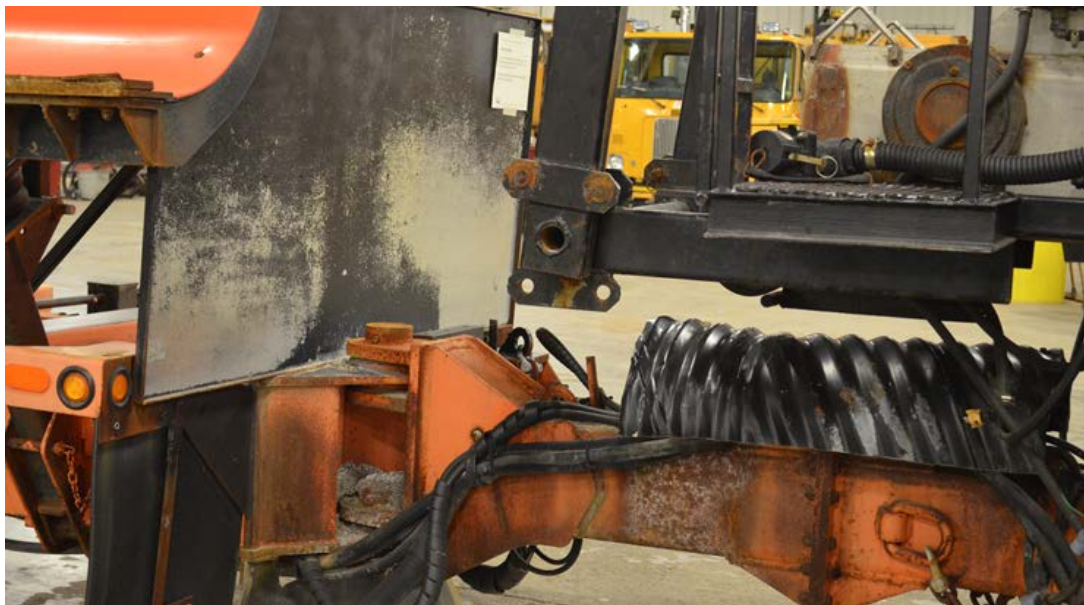
First-Round Winner

Innovations Challenge
<http://wwwi/intranet/cr/SolutionsAtWork/Innovations.htm>

April 2014

Prepared by Customer Relations
Missouri Department of Transportation

Tow Plow Salt Deflector



Description

The Tow Plow Salt Deflector was designed to deflect salt from the plow to prevent salt buildup.

Benefit

Using the deflector allows more salt to be directed onto the roadway and less time is needed for cleaning the plow. With salt deflecting onto the roadway instead of the plow, less salt is used, saving winter operation costs. In addition, using the deflector has greatly reduced electrical system failures. With the easier and faster cleanup and maintenance of plows, more time is available for workers to do other tasks. The deflector can be built and used statewide.

Parts and Labor

Total: \$75
Labor: 16 hours

For More Information:

Contact Russell Fisher at russell.fisher@modot.mo.gov or (816) 380-3721.

Additional photos can be seen at the Innovations Challenge homepage: <http://wwwi/intranet/cr/SolutionsAtWork/Innovations.htm>



TOW PLOW MODIFICATION MATERIALS LIST

1. 16 Feet 8inch of 1inch x1/4 Angle Iron
2. 5 feet 7 inch of 1 ¼ Square Tube
3. 8 feet of 3/16 inch Flat Iron
4. ½ a piece of 18 inch culvert pipe (recycled)
5. 2 Mud flaps
6. 36 various nuts and bolts
7. 1 piece of 7x3feet sheet metal (recycled)

Total shop materials cost \$75.00