



Missouri Department of Transportation

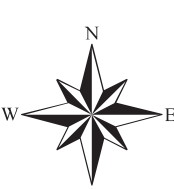
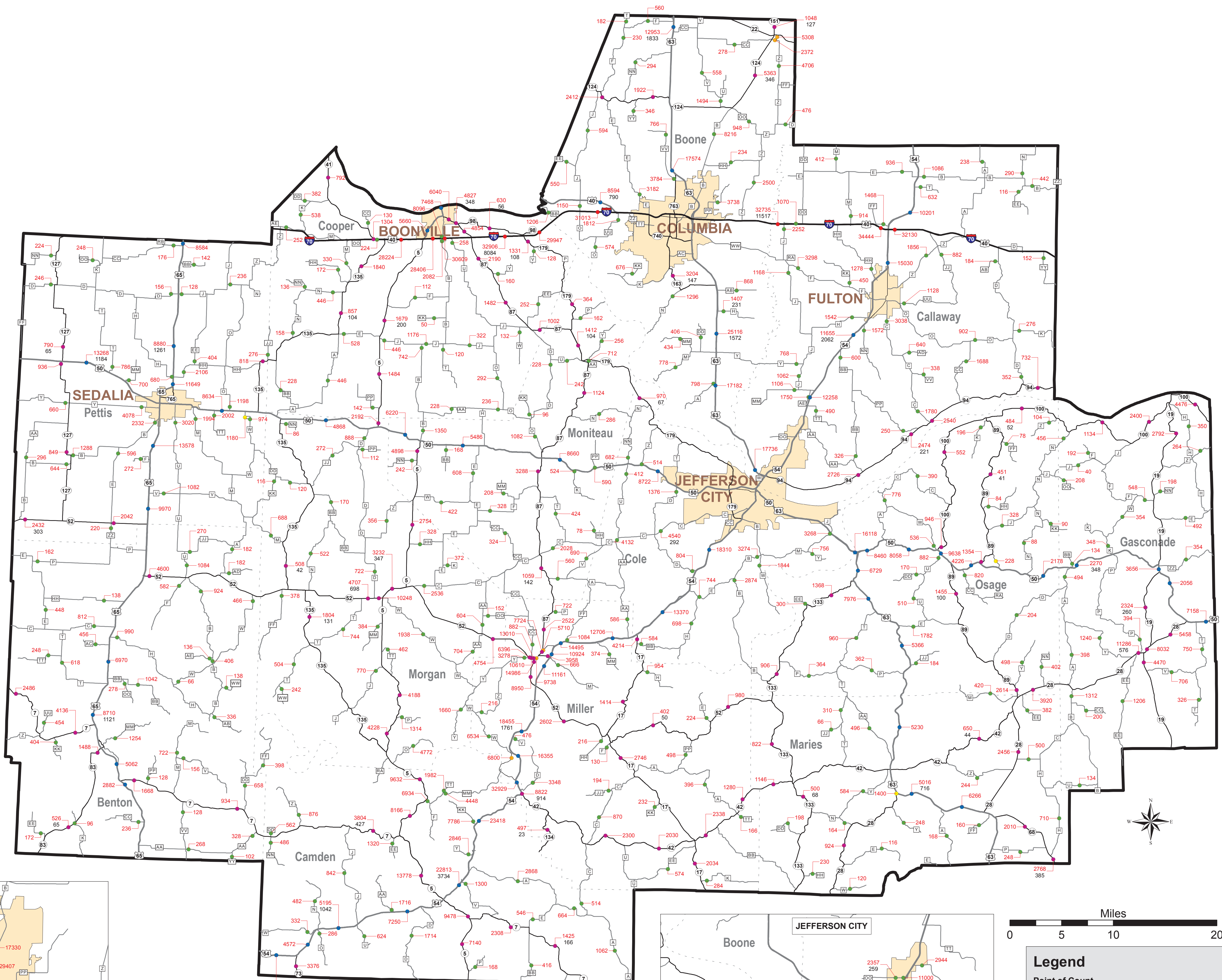
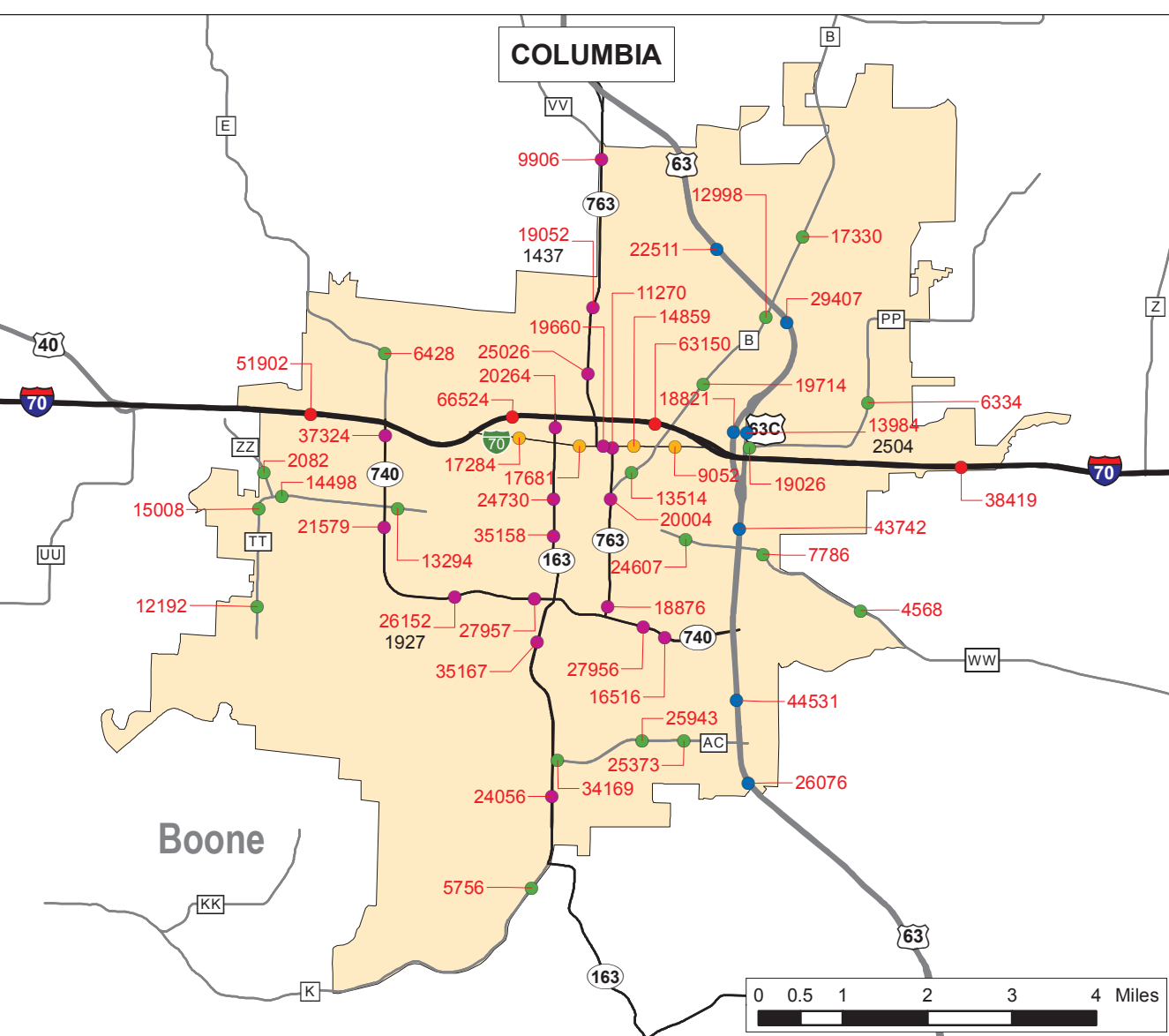
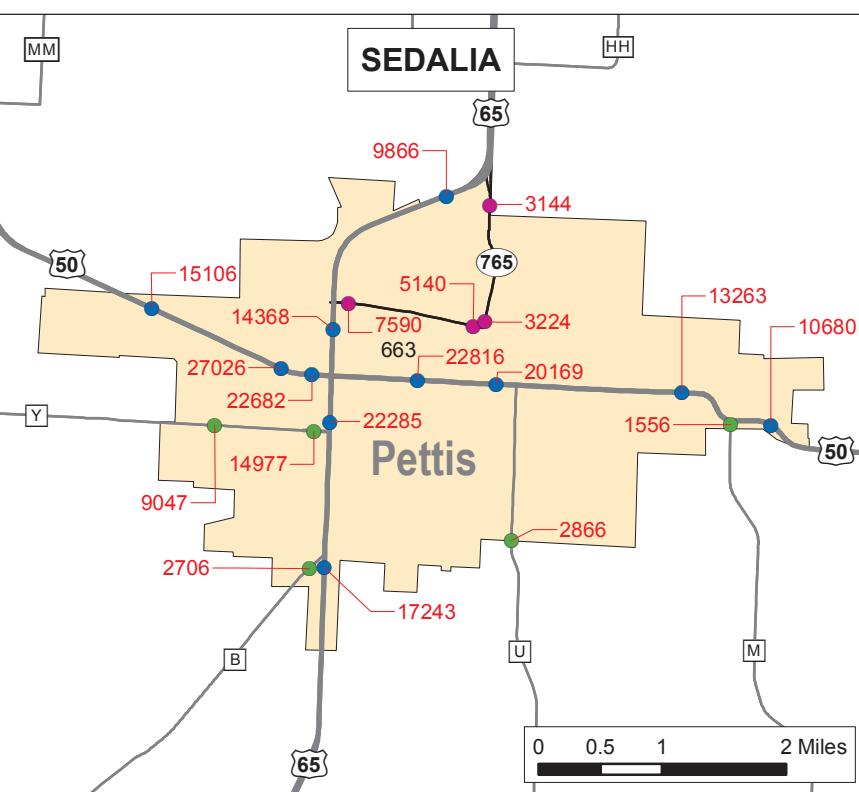
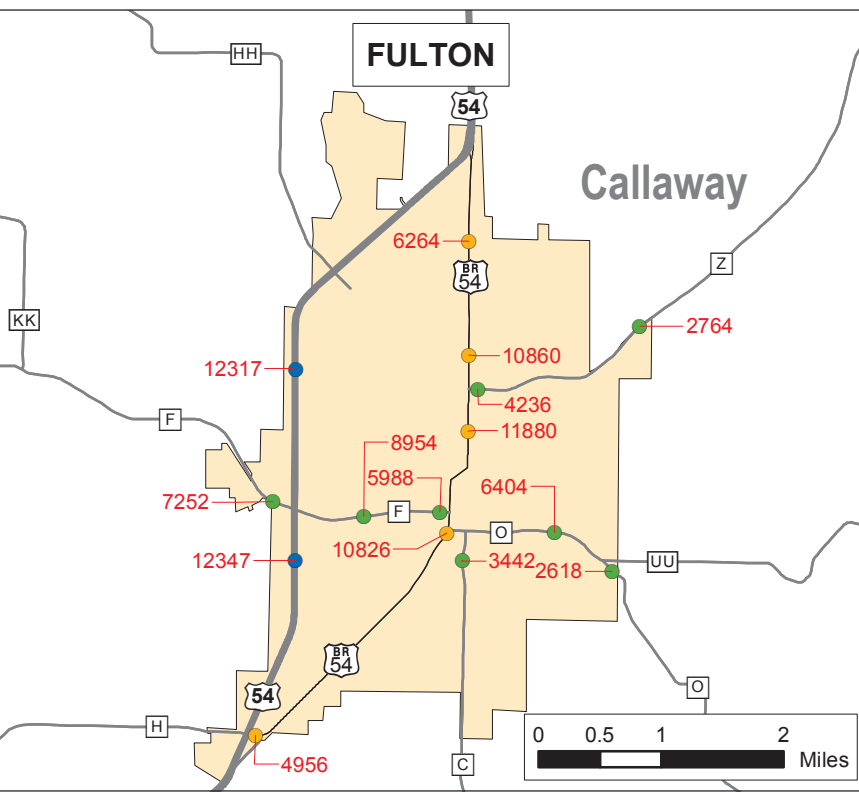
2006

District 5
Traffic Volume Map

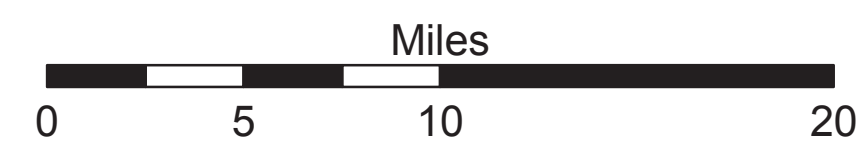
Prepared by:
Missouri Department of Transportation
Transportation Planning
2217 St. Mary's Blvd.
Jefferson City, MO 65109
Phone (573) 526-8058
Fax (573) 526-8052

www.modot.org

This report contains information that is protected from disclosure by federal law, 23 USC Section 409 and the Missouri Open Records Law (Sunshine Act), Section 610.021 RSMo. Please review MoDOT's policy and procedure manual on the Sunshine Act before releasing any of the information contained herein.



2006
Traffic Volume
and
Commercial Vehicle Counts
District 5



Legend

- Interstate
- US Routes
- MO Routes
- Business Routes and Loops
- Lettered and Alternate Routes
- Spur Routes and Alternate Routes
- 23462 Traffic Volume (AADT)
- 1673 Truck Volume
- Urban Areas
- Counties

AADT = Average Annual Daily Traffic
Note: Traffic Volumes Represent Estimated Average Daily Traffic
Note: Truck Volumes Shown on Map Represent the 2006 Average Daily Traffic and Have Not Been Seasonally Adjusted.