

**2012-13 District Winner**

Tool and Equipment Challenge  
<http://wwwi/intranet/cr/SolutionsAtWork/Innovations.htm>

**April 2013**

Prepared by Customer Relations  
Missouri Department of Transportation

**Truck Bed Wedge**



**Description**

This innovation uses pins to secure a wedge in the dump bed to distribute material for edge rut repairs.

**Benefit**

The Truck Bed Wedge provides an even row of material for a motor grader to complete the final grading. This eliminates the need for hydro boxes along with bed converters, hoses, belts and bearings.

**Parts and Labor**

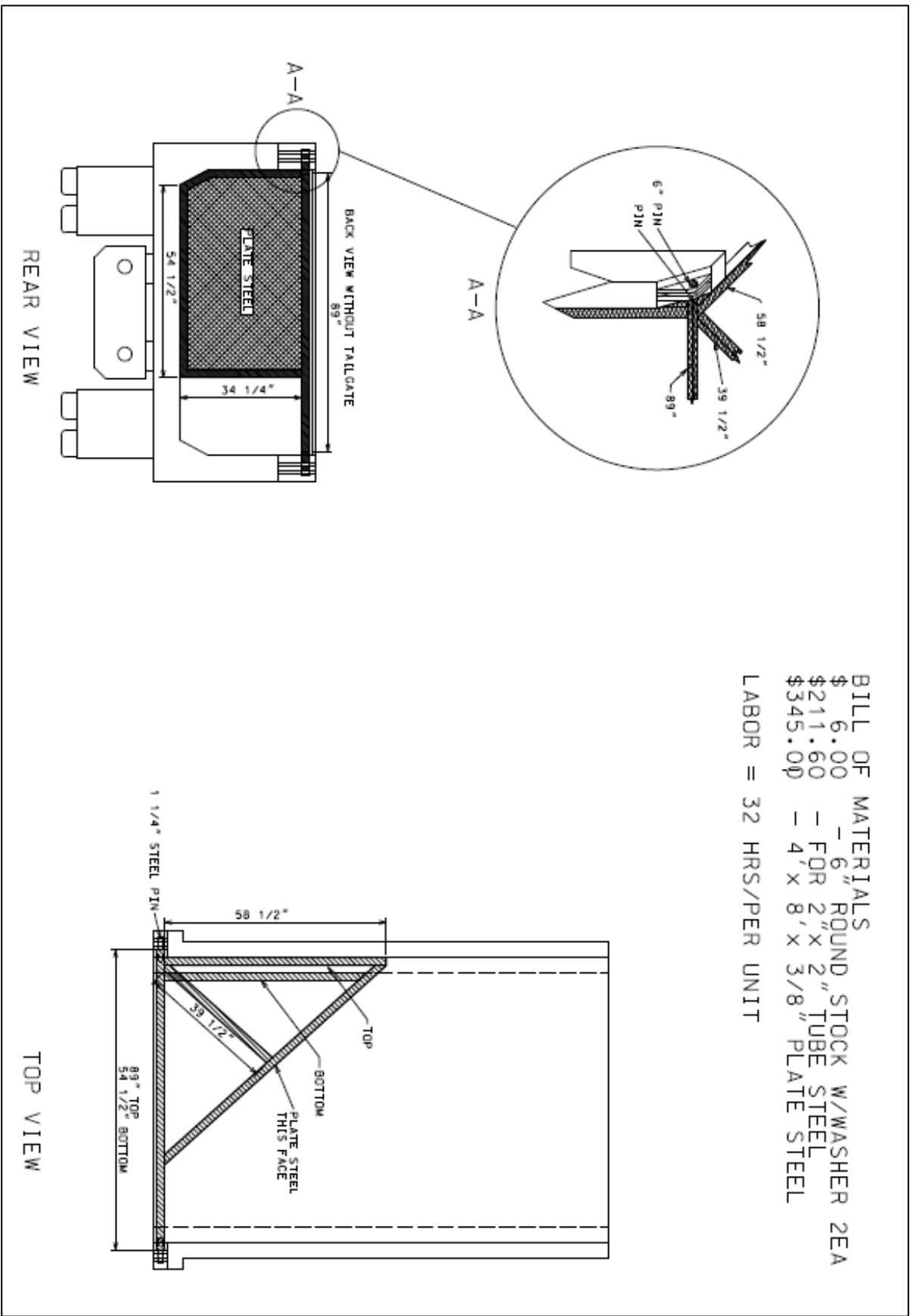
See shop drawing on back

**Total: \$563**

**Labor: 32 hours**

**For More Information**

Contact Jerry Lyston at (314) 223-1044. Additional photos can be seen by accessing the Tool and Equipment homepage at <http://wwwi/intranet/cr/SolutionsAtWork/Innovations.htm>.



BILL OF MATERIALS  
 \$ 6.00 - 6" ROUND STOCK W/WASHER 2EA  
 \$211.60 - FOR 2" X 2" TUBE STEEL  
 \$345.00 - 4' X 8' X 3/8" PLATE STEEL

LABOR = 32 HRS/PER UNIT