

ROUTE 63

② 001 SHEET 1 OF 9
 ADAIR



URBAN LIMITS
 APPROVED 10-52

②

TO GREEN CASTLE

TO GREEN CASTLE

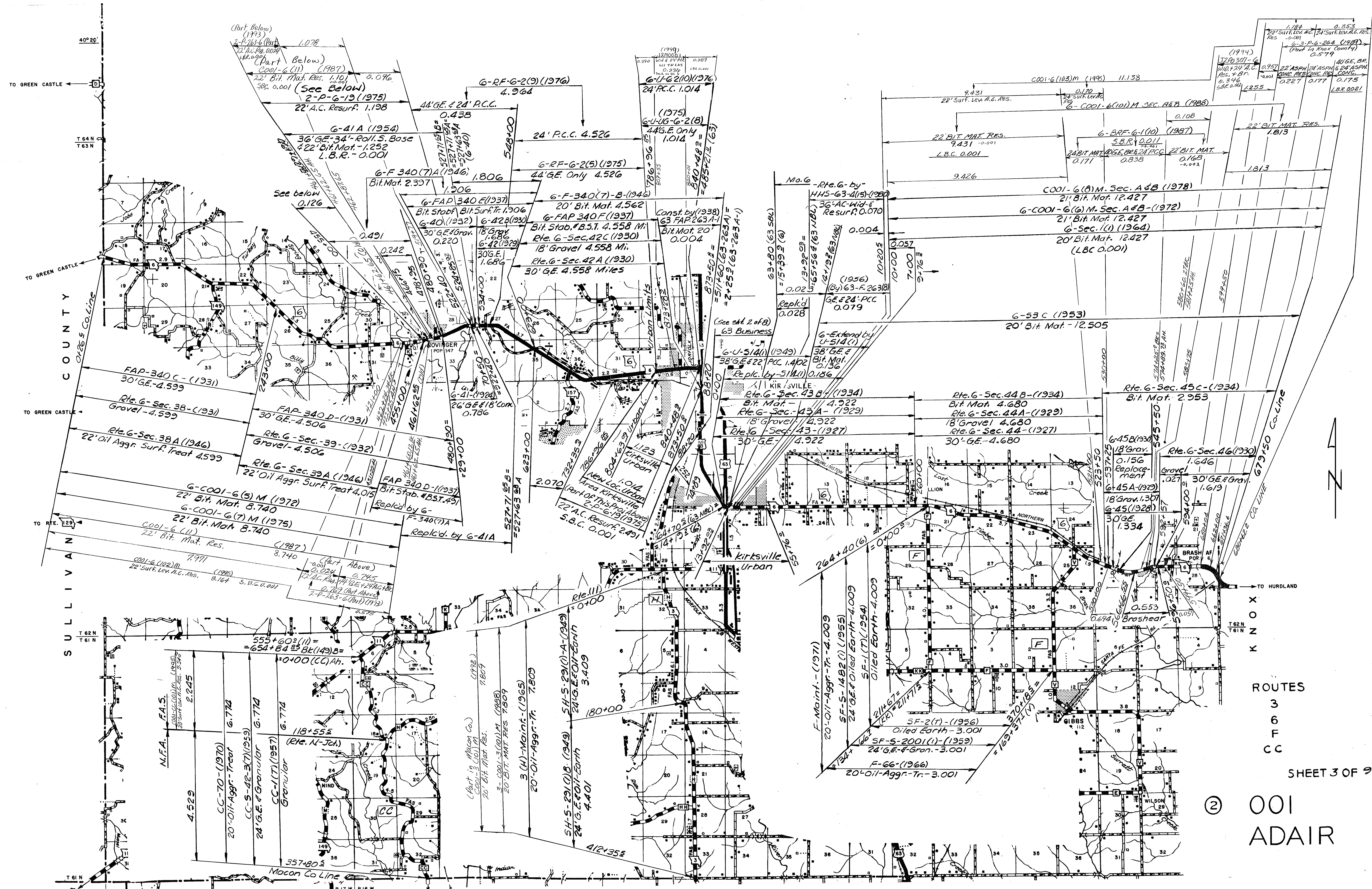
TO Rte. 129

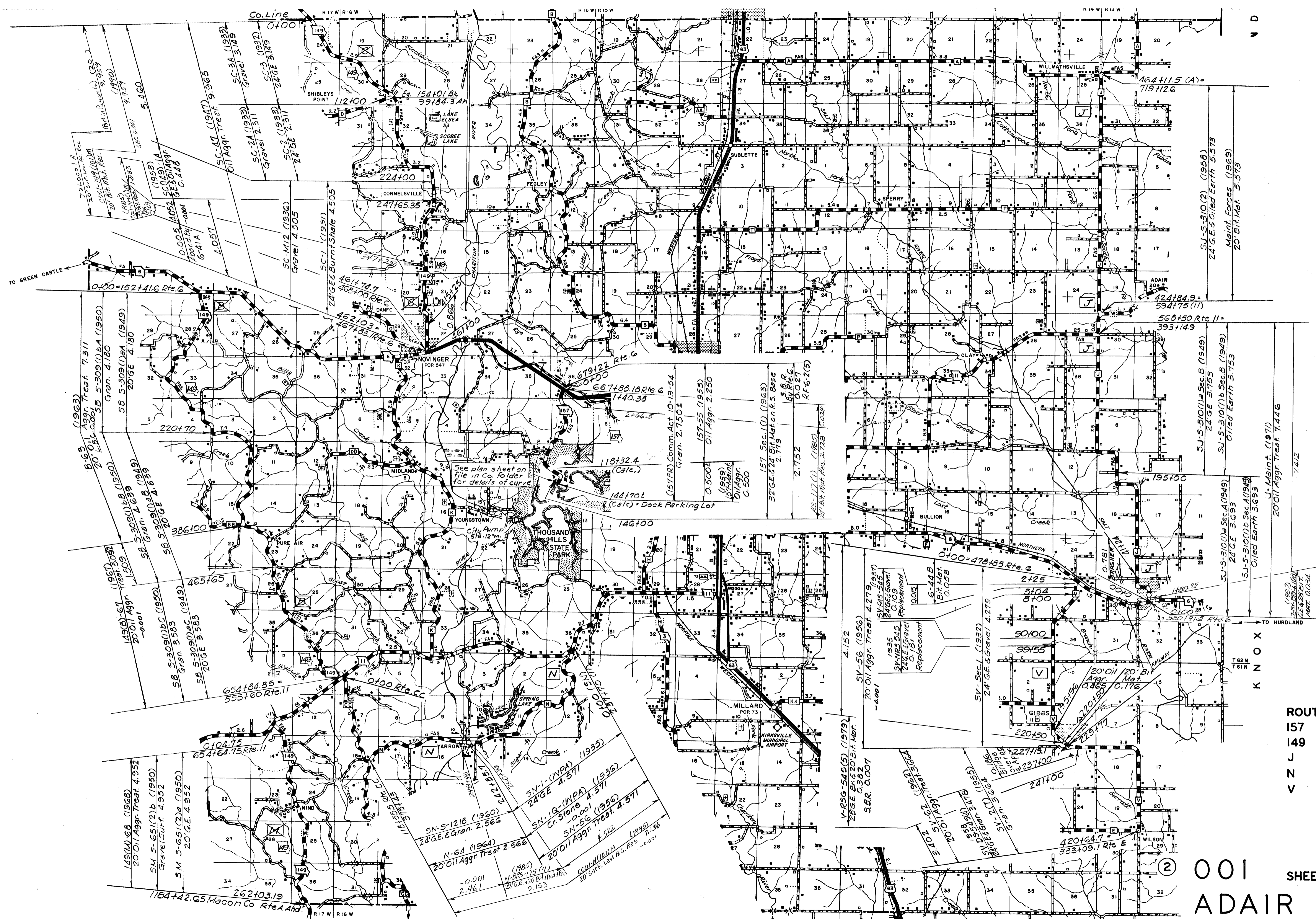
TO HURLAND

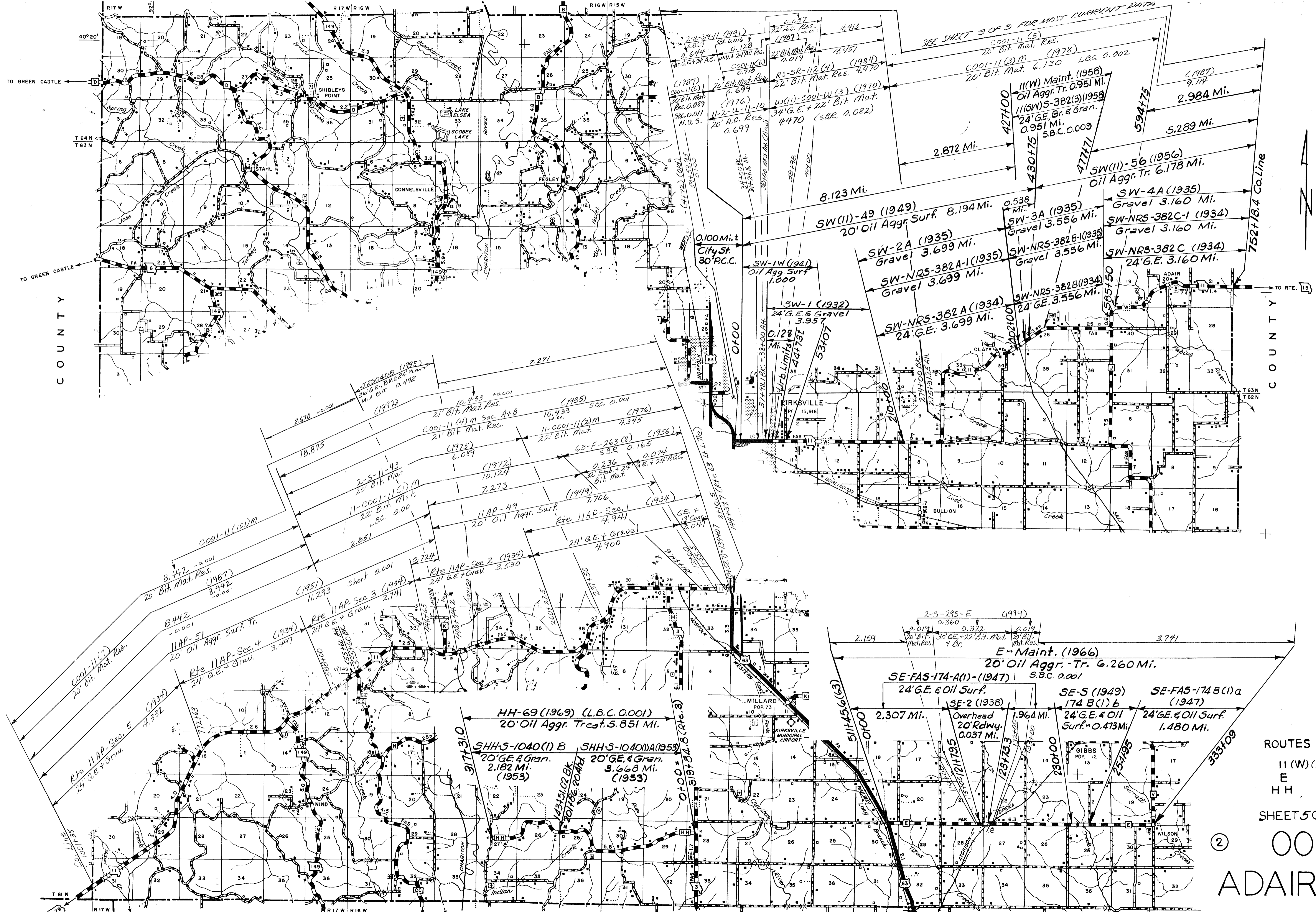
ROUTES
3
6
F
CC

SHEET 3 OF 9

② 001
ADAIR







SEE SHEET 3 OF 9 FOR MOST CURRENT DATA

COOL-11 (5)
20' Bit. Mat. Res.
COOL-11 (3) M (1978)
20' Bit. Mat. 6.130 L.B.C. 0.002

11(W) Maint. (1958)
Oil Aggr. Tr. 0.951 Mi.
11(SW) S-382(3) (1958)
24' G.E. Br. & Gran.
0.951 Mi.
S.B.C. 0.009

SW(11)-56 (1956)
Oil Aggr. Tr. 6.178 Mi.

SW-4A (1935)
Gravel 3.160 Mi.
SW-NRS-382C-1 (1934)
Gravel 3.160 Mi.

SW-NRS-382C (1934)
24' G.E. 3.160 Mi.

SW-2A (1935)
Gravel 3.699 Mi.
SW-NRS-382A-1 (1935)
Gravel 3.699 Mi.

SW-NRS-382A (1934)
24' G.E. 3.699 Mi.

SW(11)-49 (1949)
20' Oil Aggr. Surf. 8.194 Mi.

SW-1W (1941)
Oil Aggr. Surf. 1.000

SW-1 (1932)
24' G.E. & Gravel 3.957

SW-NRS-382B-1 (1935)
Gravel 3.556 Mi.
SW-NRS-382B (1934)
24' G.E. 3.556 Mi.

SW-NRS-382B (1934)
24' G.E. 3.556 Mi.

COOL-11 (4) M (1975)
21' Bit. Mat. Res. 6.089

COOL-11 (2) M (1976)
21' Bit. Mat. Res. 4.375

63-F-263 (8) (1956)
S.B.R. 0.165

11-COOL-11 (C) M (1972)
22' Bit. Mat. L.B.C. 0.00

11AP-49 (1949)
20' Oil Aggr. Surf. 7.706

Rte 11AP-49 (1934)
24' G.E. + Gravel 4.900

Rte 11AP-51 (1934)
24' G.E. + Gravel 3.530

Rte 11AP-51 (1934)
24' G.E. + Gravel 3.530

HH-69 (1969) (L.B.C. 0.001)
20' Oil Aggr. Treat. 5.851 Mi.

SHH-5-1040 (1) B (1953)
20' G.E. & Gran. 2.182 Mi.

SHH-5-1040 (A) (1953)
20' G.E. & Gran. 3.668 Mi.

E-Maint. (1966)
20' Oil Aggr. - Tr. 6.260 Mi.

SE-FAS-174-A(1) (1947)
24' G.E. & Oil Surf. 2.307 Mi.

SE-2 (1938)
Overhead 20' Rdwy. 1.964 Mi.

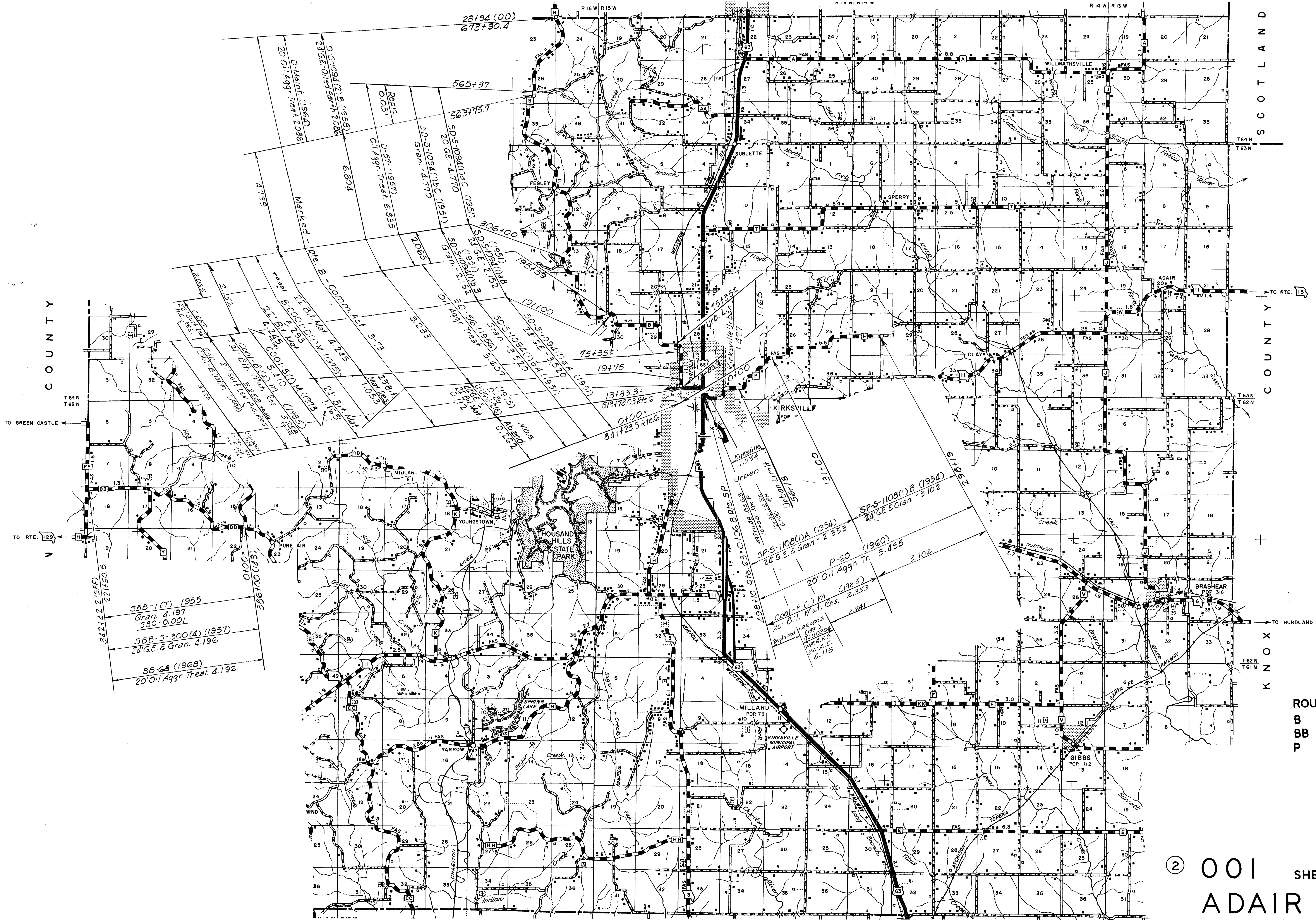
SE-S (1949)
174 B(1) b 24' G.E. & Oil Surf. 0.473 Mi.

SE-FAS-174 B(1) a (1947)
24' G.E. & Oil Surf. 1.480 Mi.

ROUTES
11 (W) (PART)
E
HH

SHEET 5 OF 9

② 001
ADAIR

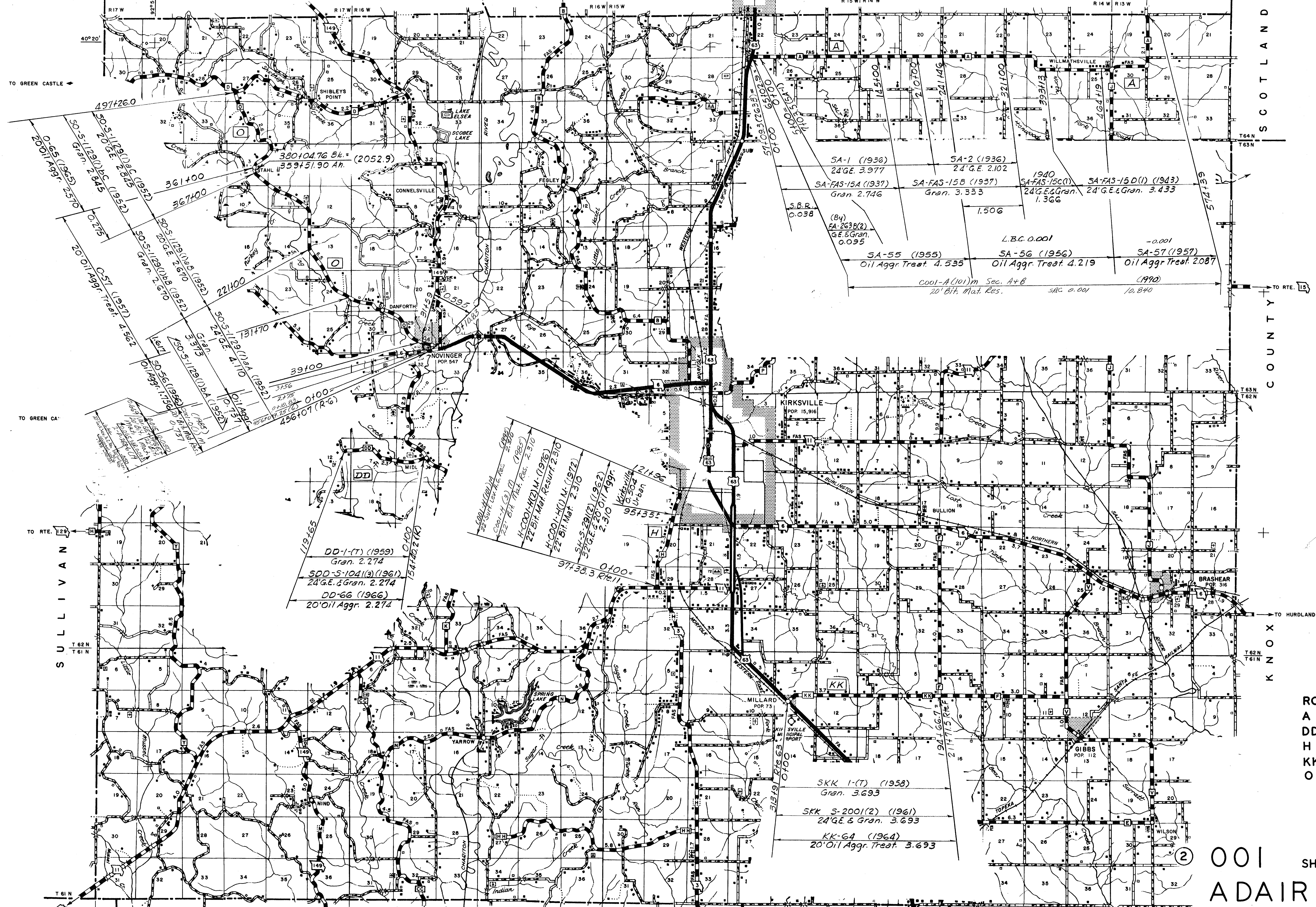


COUNTY

SCOTLAND COUNTY

KNOX COUNTY

ROUTES
B
BB
P



SCOTLAND COUNTY

KNOX

SULLIVAN

ROUTES
A
DD
H
KK
O

001 SHEET 8 OF 9
ADAIR

TO GREEN CASTLE ←

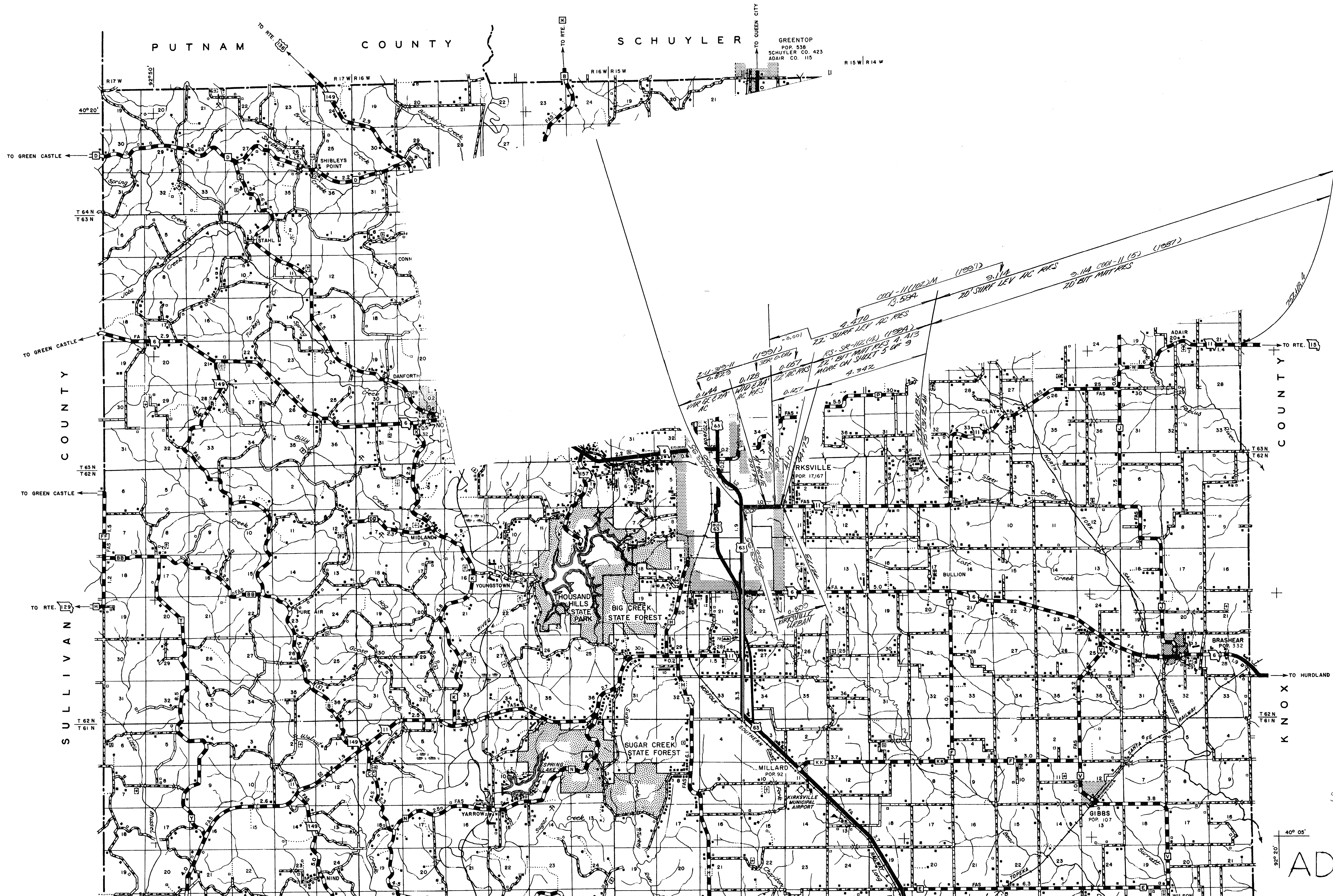
TO GREEN CA...

TO RTE. 15

TO HURLAND

Map annotations include:

- 380+04.76 Bl. = (2052.9)
- 359+51.90 Ah.
- SA-1 (1936) 24' G.E. 3.977
- SA-2 (1936) 24' G.E. 2.102
- SA-FAS-15A (1937) Gran. 2.746
- SA-FAS-15B (1937) Gran. 3.333
- SA-FAS-15C(1) 24' G.E. & Gran. 1.366
- SA-FAS-15D(1) (1943) 24' G.E. & Gran. 3.433
- SA-55 (1955) Oil Aggr. Treat. 4.535
- SA-56 (1956) Oil Aggr. Treat. 4.219
- SA-57 (1957) Oil Aggr. Treat. 2.087
- DD-1(T) (1959) Gran. 2.274
- SDD-S-104(a) (1961) 24' G.E. & Gran. 2.274
- DD-66 (1966) 20' Oil Aggr. 2.274
- SKK 1-(T) (1958) Gran. 3.693
- SKK S-2001(2) (1961) 24' G.E. & Gran. 3.693
- KK-64 (1964) 20' Oil Aggr. Treat. 3.693
- Novinger POP. 547
- Kirkville POP. 15,916
- Brashear POP. 316
- Willmaville
- Yarrow
- Spring Lake
- Millard POP. 73
- Gibbs POP. 112
- Wilson
- Connelville
- Fogley
- Danforth
- Shibley Point
- Stahl
- Elsea
- Scobee Lake
- Chasonton
- Wind
- Topera
- Willmaville
- Novinger
- Kirkville
- Brashear
- Millard
- Gibbs
- Wilson
- Connelville
- Fogley
- Danforth
- Shibley Point
- Stahl
- Elsea
- Scobee Lake
- Chasonton
- Wind
- Topera
- Willmaville



PUTNAM COUNTY

SCHUYLER COUNTY

GREENTOP
POP. 338
SCHUYLER CO. 423
ADAIR CO. 115

SULLIVAN COUNTY

KNOX COUNTY

ROUTES
11 (PART)

SHEET 9 OF 9

001
ADAIR

40° 05'
92° 20'