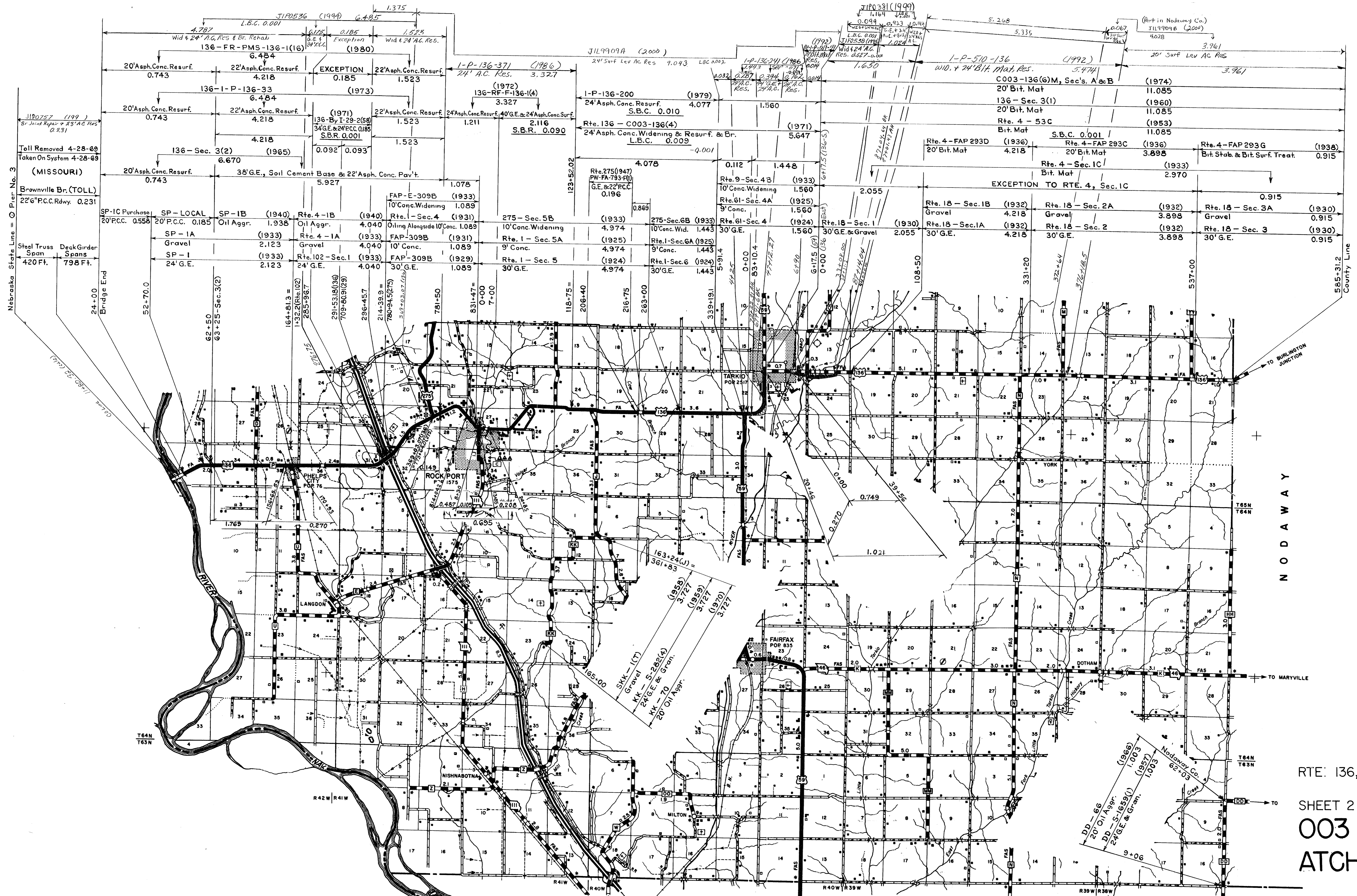


RTE: I-29

SHEET 1 OF 8

003 ①  
 ATCHISON



Nebraska State Line = O Pier No. 3

JIP0757 (199)  
Br. Joint Repair to 23' AC Res.  
Q.231

Toll Removed 4-28-69  
Taken On System 4-28-69  
(MISSOURI)

Brownville Br. (TOLL)  
22' G.P.C.C. Rdwy. 0.231

RTE: 136, KK, DD  
SHEET 2 OF 8  
003 ①  
ATCHISON



00 - Mant. Forces (1973)  
20' Bit. Mat 1.942

00 - S-1655(I) B (1957)  
24' G.E. & Oiled Earth 1.942

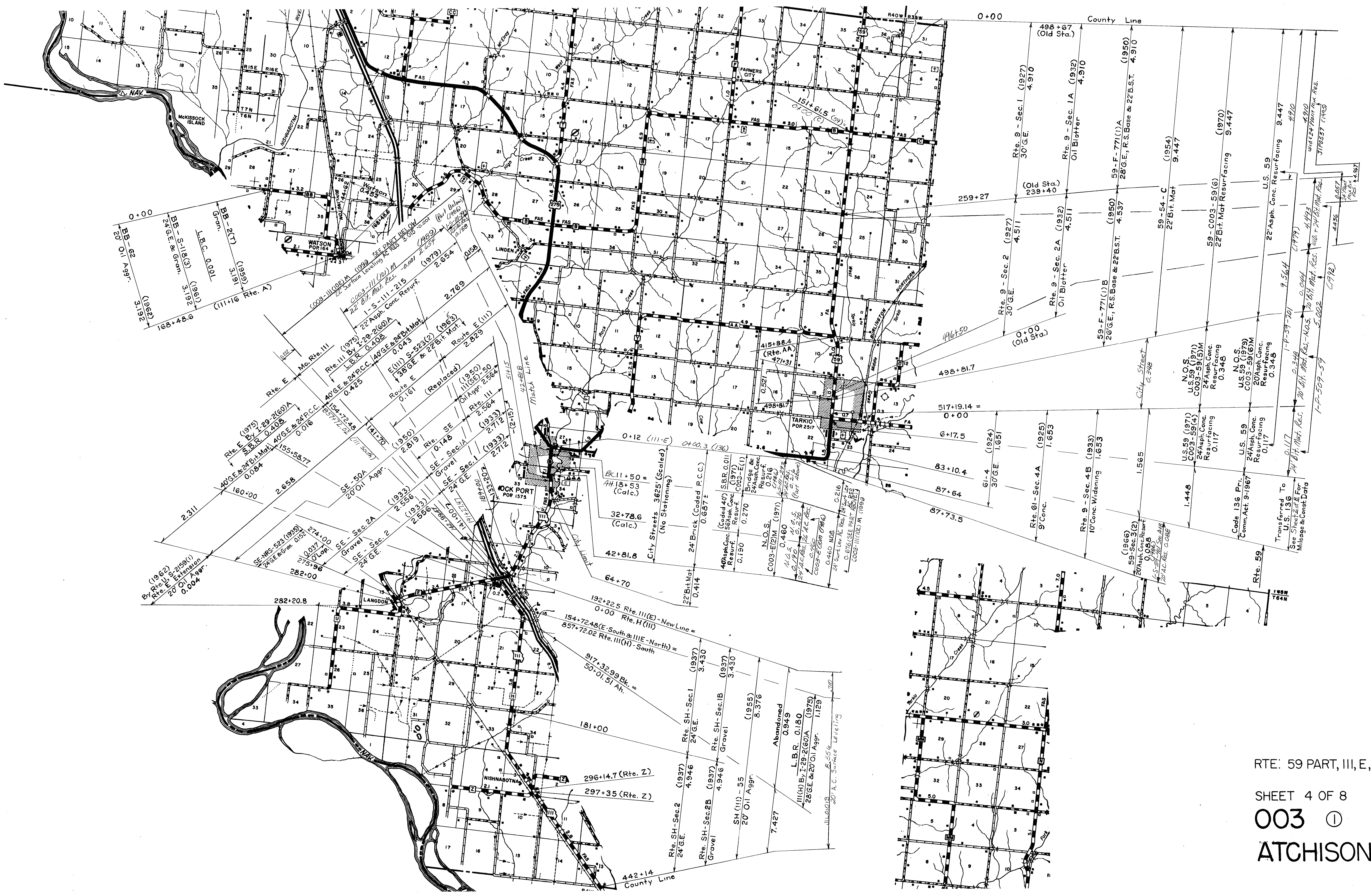
128+80 (W)  
0+0.0

32+34.6 Bk. =  
32+24.6 Ah.

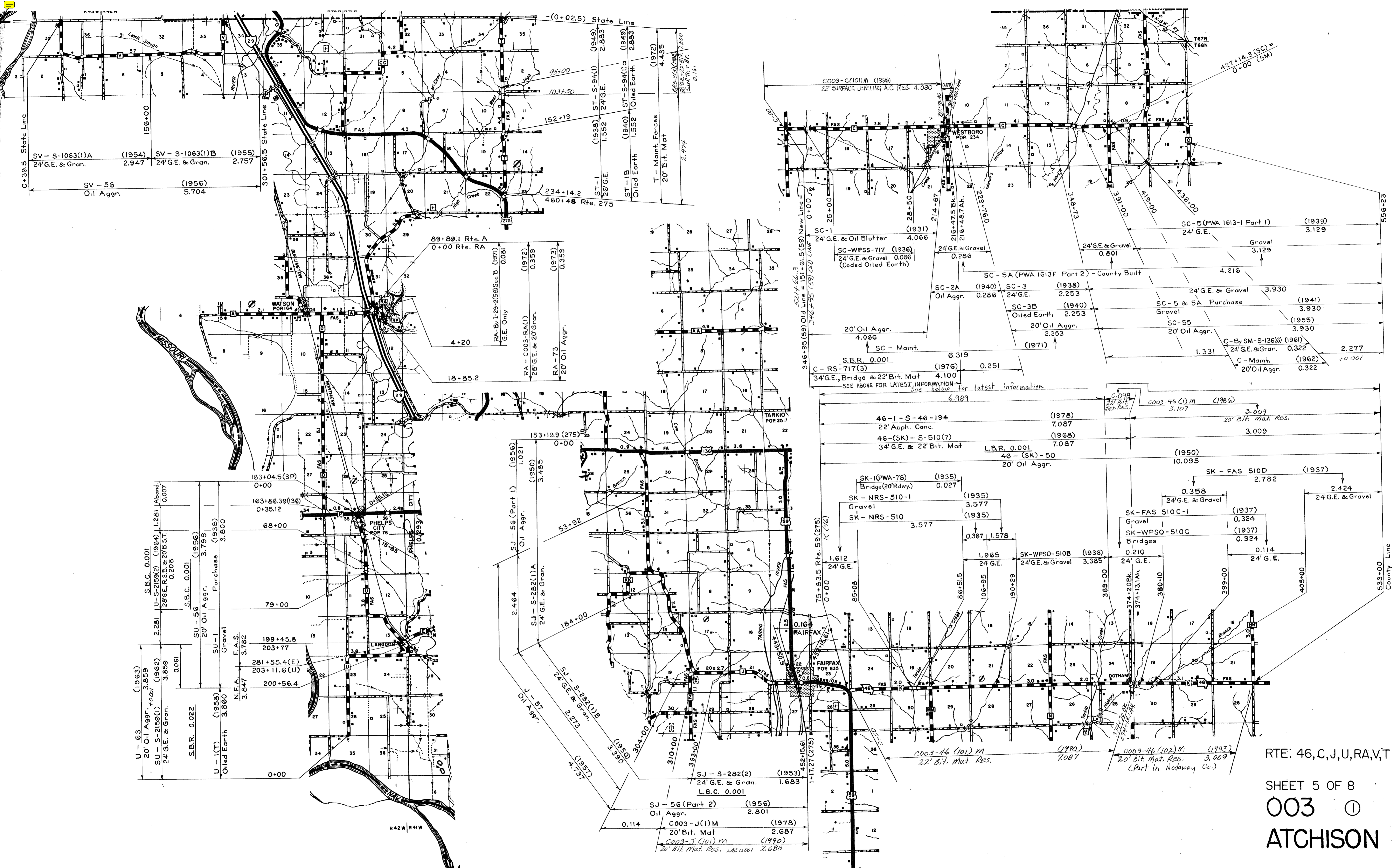
77+74.7 Bk. =  
76+58.9 Ah.

101+30.4

RTE: 59 PART, 136 SPUR,  
275, 00, 136 PART  
SHEET 3 OF 8  
**003** ①  
**ATCHISON**



RTE: 59 PART, III, E, BB  
 SHEET 4 OF 8  
 003 ①  
 ATCHISON



RTE: 46,C,J,U,RA,V,T

SHEET 5 OF 8  
 003  
 ATCHISON



C003-D(2)M  
 20' Bit. Mat  
 D-C003-D(1)  
 20' Bit. Mat Resurf.  
 (1974) 5.031  
 (1969) 5.031  
 D-57  
 20' Oil Aggr.  
 (1957) 5.021  
 D-S-118(I)  
 24' G.E. & Gran.  
 (1955) 5.021  
 SD-1(T)  
 Gran.  
 (1953) 5.021

19+12.6 (Rte. A)  
 0+00  
 265+13.5  
 118+52.4 (Rte. 4)  
 265+63.35  
 119+26.82 (Rte. 136)

AA - Maint. Forces  
 20' Bit. Mat (1972) 4.902  
 SAA - S-1399(I)B  
 24' G.E. & Oiled Earth (1956) 4.902  
 Replaced  
 O.III  
 SAA - I(T)  
 Oiled Earth (1955) 4.791

$150+69.1 = 212+95.6(C)$   
 $150+73.0 = 212+96.5(C)$   
 $202+76.5 = 0+00$   
 $202+80.1(C) = 0+00$   
 $1+605k. = 1+00 An.$   
 $10+38.5$   
 (1957) 2.855  
 O-DS-940(2) (1956) 2.850  
 24' G.E.  
 O-S-940(4) (1956) 2.850  
 24' Gran. Surf.  
 O-63 (1963) 2.850  
 20' Oil Aggr.  
 40.001  
 Absorbed by Rte. C  
 Reconst. Proj. RS-717(3)  
 0.001

SO - 1(T)  
 Gran.  
 (1954) 9.690  
 SO - S6  
 20' Oil Aggr.  
 (1956) 9.690  
 9.148  
 0.206  
 0.187  
 L.B.R. 0.011  
 O-Bv RS-717(3) (1976) 0.030  
 34' G.E. & 22' Bit. Mat  
 O - Sec. 3(1) (1967) 0.295  
 28' G.E., R.S.B. & 20' Oil Aggr.  
 C003 - O(1)M  
 20' Bit. Mat (1976) 9.630  
 2003 - 0 Col. M  
 20' Bit. Mat. Res.  
 (1972) 9.660  
 9.647

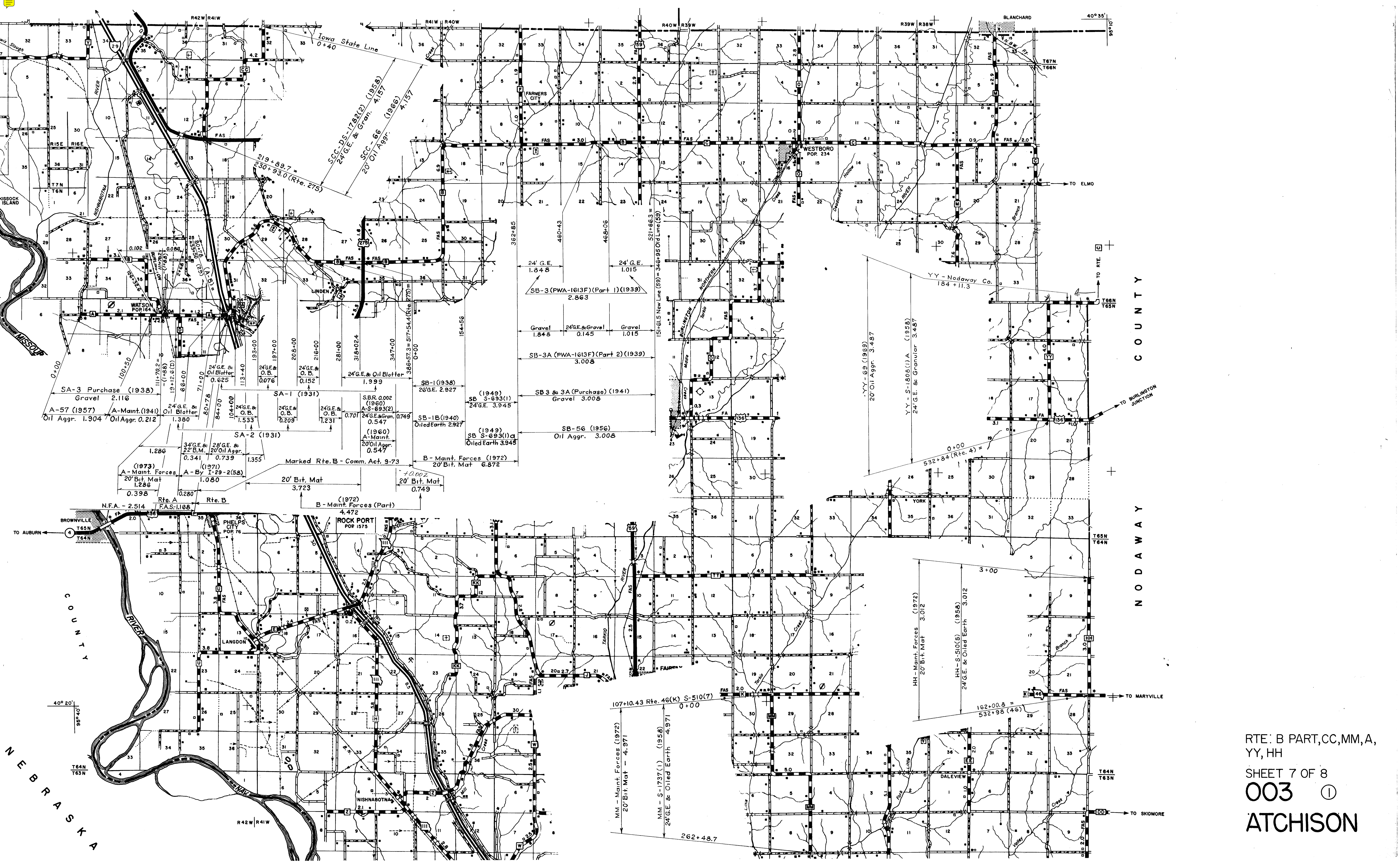
$511+70.7 = 512+44.7 = 52+94.0 (Rte. 4)$   
 $513+04.7$

S.B.R. 0.021 (1974) 0.545  
 Z - By I-29-2(60)B  
 28' G.E. & 20' Oil Aggr. (1973)

Z - Maint. Forces  
 20' Bit. Mat 1.047  
 SZ - S-282(3) (1957) 2.073  
 24' G.E. & Oiled Earth 2.073  
 SZ - 1(T)  
 Oiled Earth (1956) 5.955

W - S-165A(I)A  
 24' G.E. & Oiled Earth (1957) 2.005  
 W - S-165A(I)B  
 24' G.E. & Oiled Earth (1958) 4.935  
 L.B.R. 0.030  
 W - By I-16-29-2(7)95  
 34' G.E. & 22' Bit. Mat (1975) 4.558  
 W - Maint. Forces (1973) 4.558  
 20' Bit. Mat

SEE - 1(T)  
 Gran.  
 (1959) 2.998  
 SEE - S-510(6)  
 24' G.E. & Gran. (1962) 2.998  
 EE - G4  
 20' Oil Aggr. (1964) 2.998



RTE: B PART, CC, MM, A,  
 YY, HH  
 SHEET 7 OF 8  
**003** ①  
**ATCHISON**

C O U N T Y

