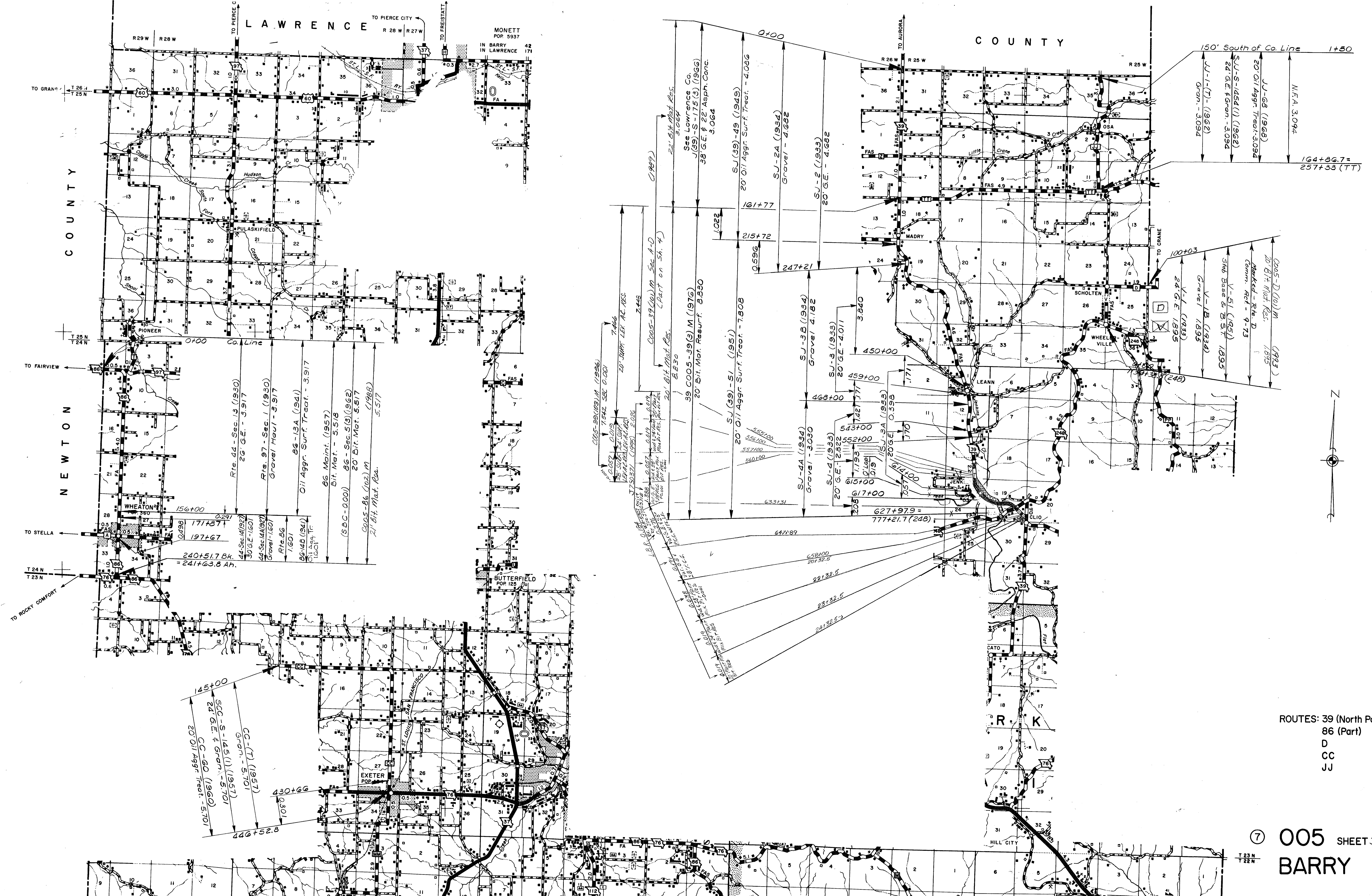
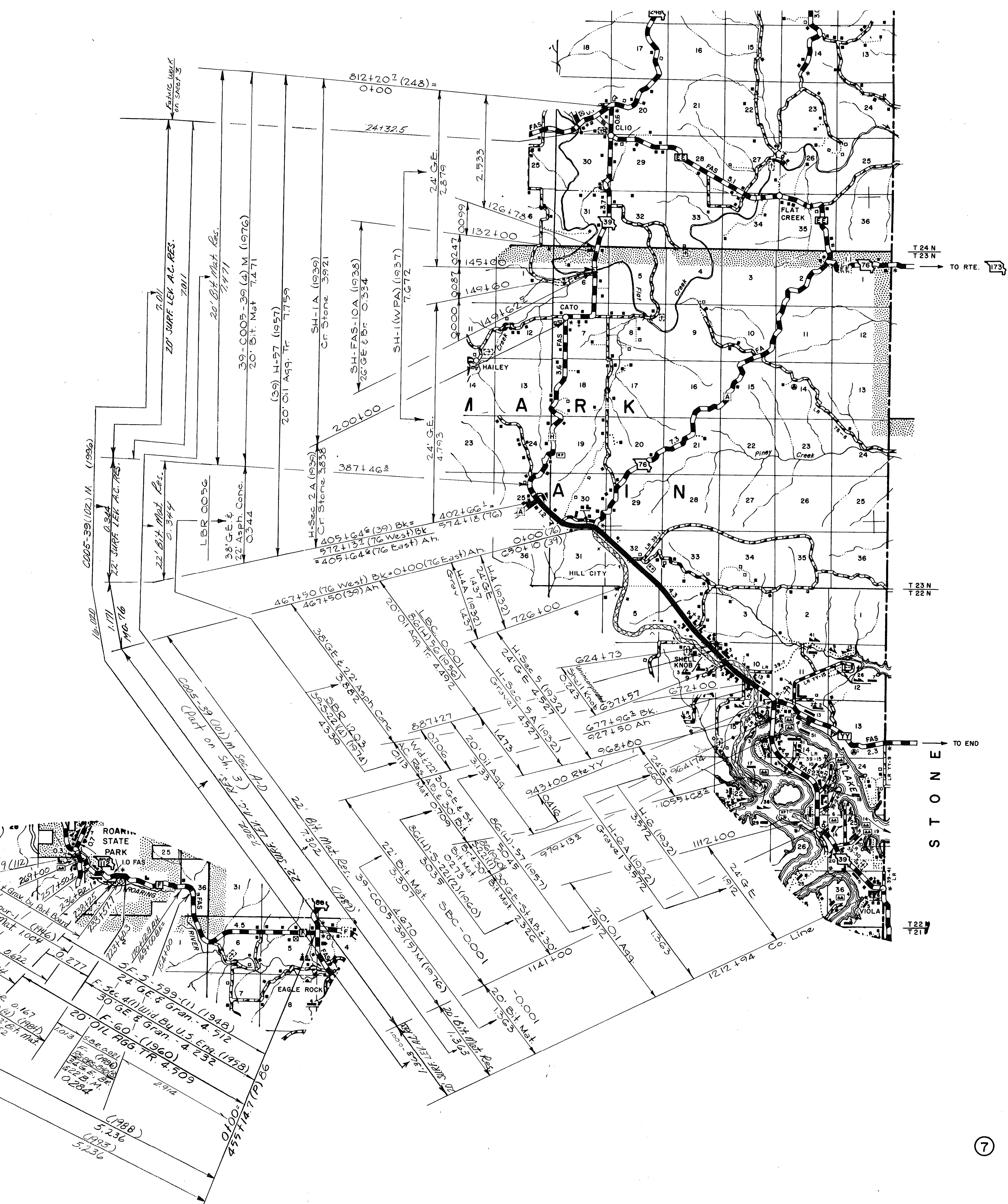
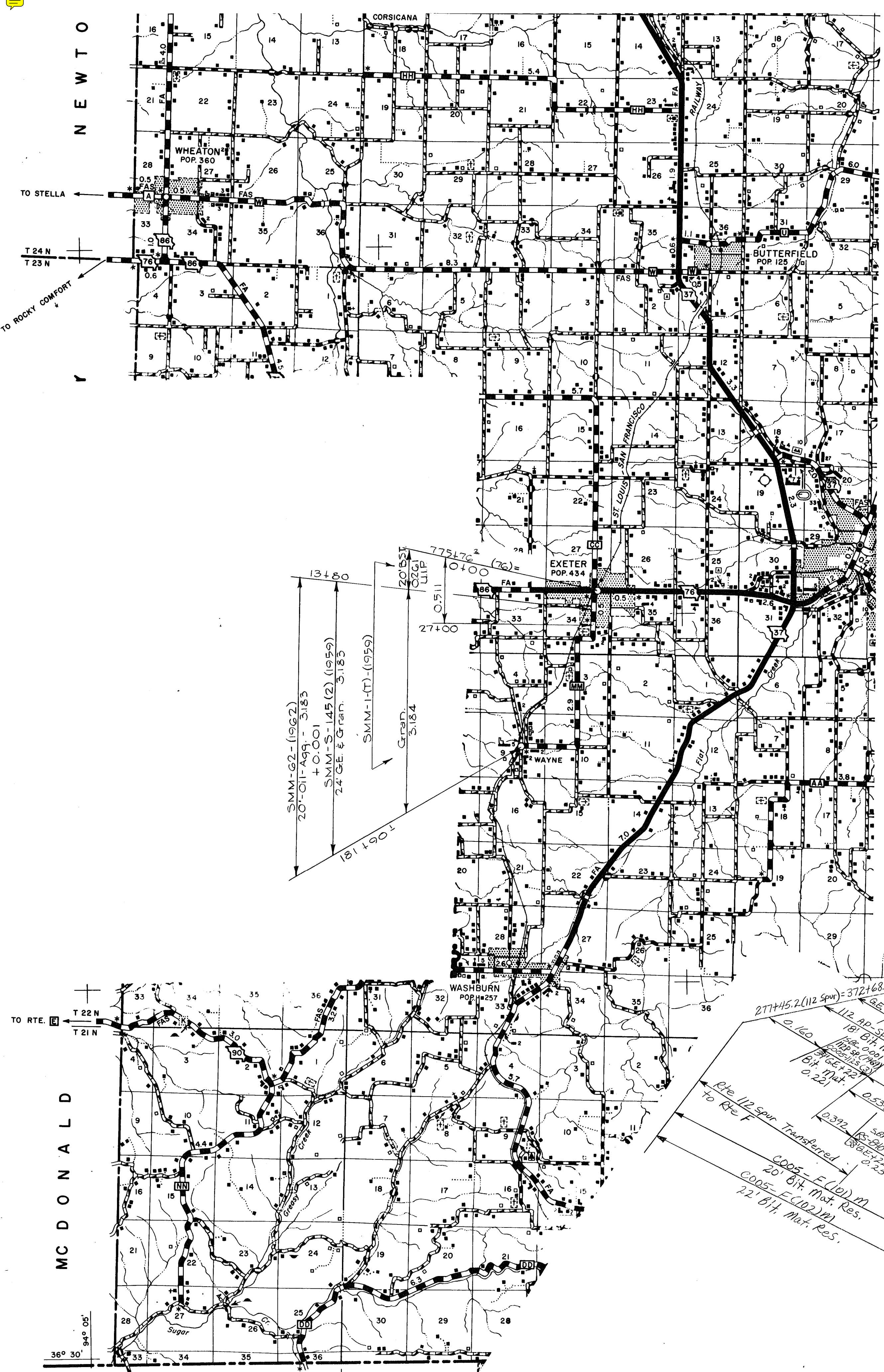


- ROUTES: 37 Bus.
 E
 W
 AA
 DD (37)
 YY



ROUTES: 39 (North Part Only)
 86 (Part)
 D
 CC
 JJ

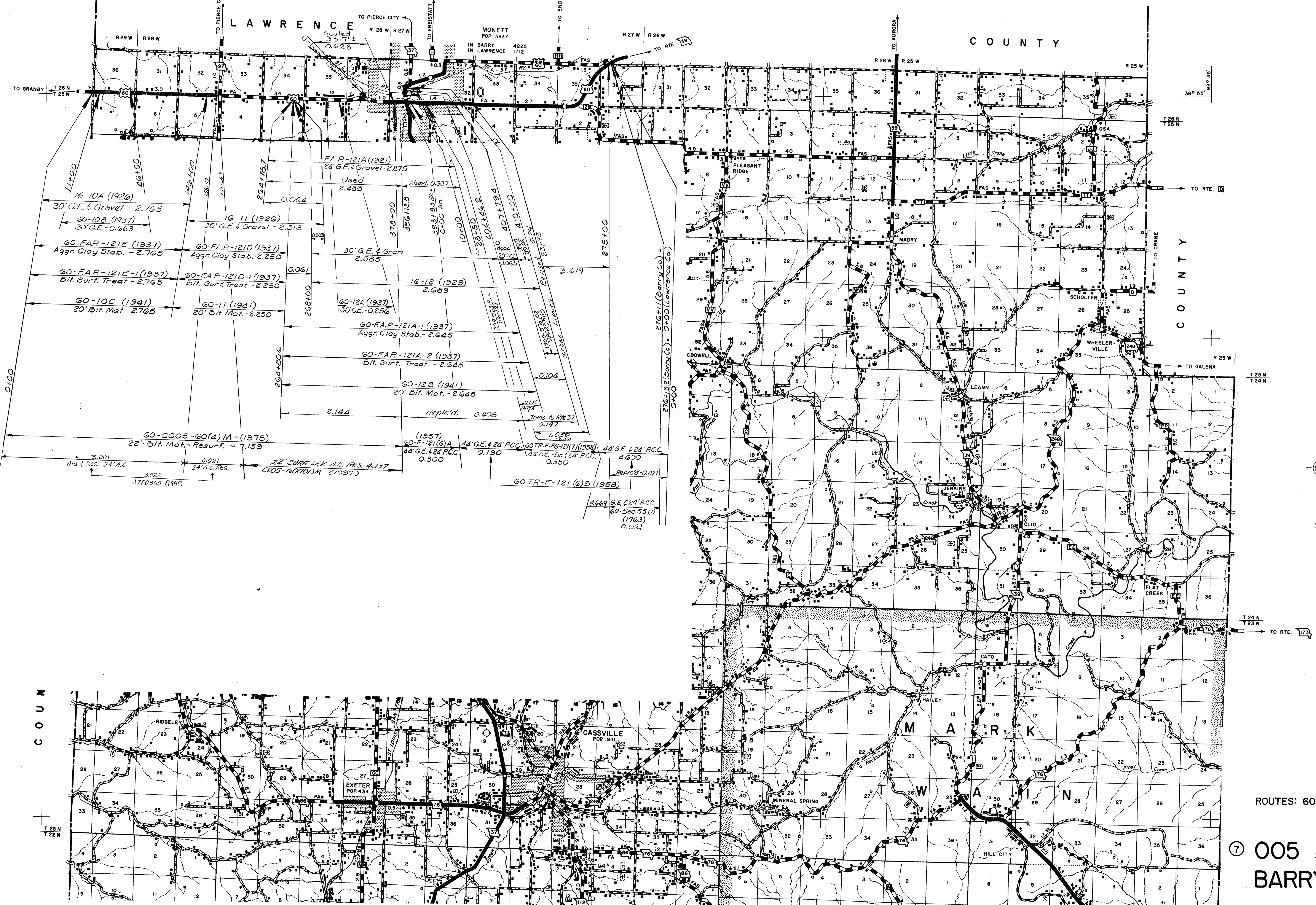


- Natural Ford or Low Water Bridge
- Bridge - General (span longer than Small Bridges Closely Spaced)
- Drawbridge
- Suspension Bridge
- Arch Bridge
- Steel Truss Bridge
- City, Town and Village Limits
- Delimited Urban Area Line
- Park or Reservation Boundary
- County Line
- Civil Township Line

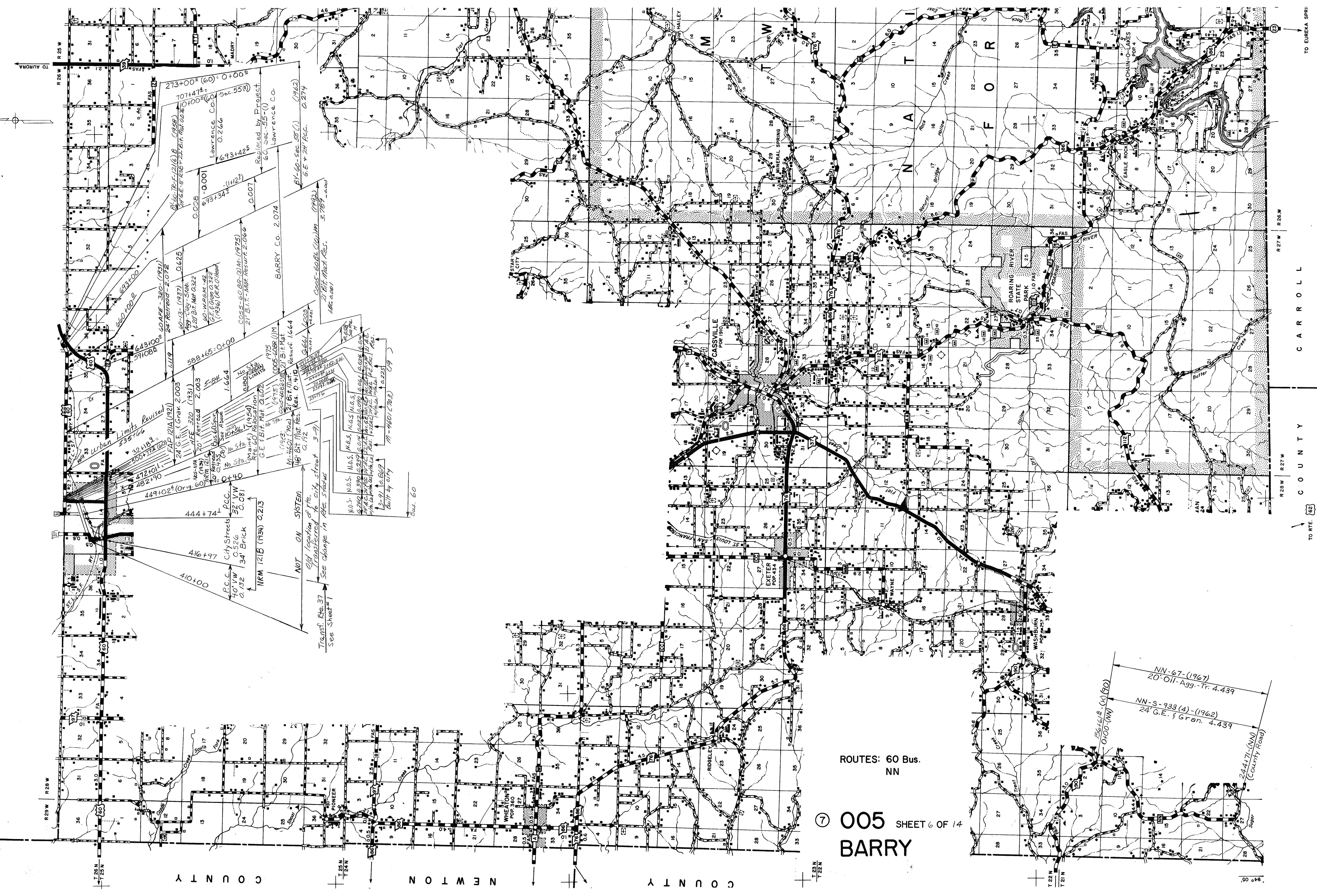
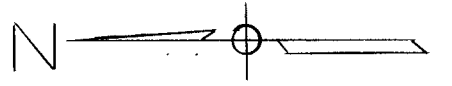
ROUTES: 39 (Part)
F
MM

⑦ 005 SHEET 4 OF 14
BARRY

LAWRENCE COUNTY



005 SHEET 5 OF 14
BARRY



STATE

COUNTY

CARROLL

TO EUREKA SPRING

ROUTES: 60 Bus.
NN

⑦ 005 SHEET 6 OF 14
BARRY

COUNTY

COUNTY

94° 05'

273+00' (60) 0+00' 7071474
10100' (60) Sec 55(1)
Lawrence Co. 0.266
693+425
Replaced by Project
60 Sec. 55-(1)
Lawrence Co.
(1962)
BY 60-SEC-55(C)
G.E.V. 247 PCC. 0.274

643+00' 594088
60 AFE-32C-(1921)
24' RETROD-21072
0.425
499-13-(1937)
420' BIT. MET. 0.322
60' IMPRM-42
(1946) (CR. 0.1/100)
660+00' 597300
0.008
693+341
0.007
BY 60-SEC-55(C)
G.E.V. 247 PCC. 0.274

588+65-0+00
588+65-0+00
24' G.E. GRAN. 2.003
1119
21' BIT. MET. 1.664
1664
1975
CODE COR. (11M)
21' BIT. MET.
21' BIT. MET. 1.664
21' BIT. MET.
Res. 0.410
0.664
0.664
21' BIT. MET. 1.664
1975
CODE COR. (11M)
21' BIT. MET.
21' BIT. MET. 1.664
21' BIT. MET.
Res. 0.410
0.664
0.664

444+74+ PCC.
32' VW
0.526
34' BRICK
0.081
416+97
P.C.C.
40' VW
2.132
449+02' (Orig. 60)
472+01-
482+90
32' HIB-
500' (712) (20)
555+06
Urban Limits Revised

NOT ON SYSTEM
Old location of r/c
Transferred to city street 3-71
See change in r/c status
See Sheet #1
Transf. Re 37
See Sheet #1

410+00
416+97
444+74+ PCC.
32' VW
0.526
34' BRICK
0.081
449+02' (Orig. 60)
472+01-
482+90
32' HIB-
500' (712) (20)
555+06
Urban Limits Revised

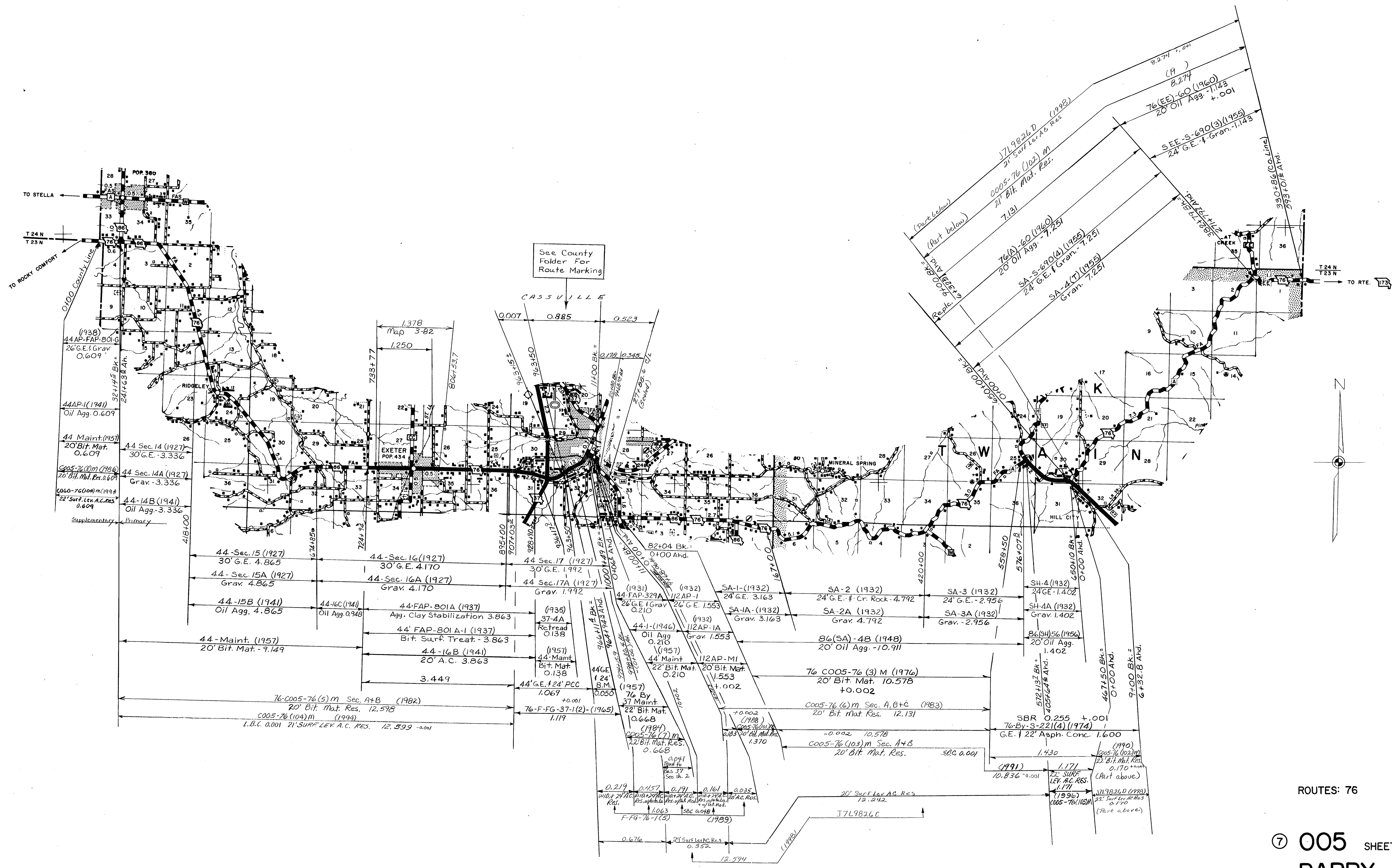
NN-67-(1967)
20' Oil-Agg.-Tr. 4.439
NN-S-933(4)-(1962)
24' G.E. Gran. 4.439
156+61.8 (K) (60)
0800-(NN)
244-471-(NN)
(County Road)

1975
CODE COR. (11M)
21' BIT. MET.
21' BIT. MET.
Res. 0.410
0.664
0.664
21' BIT. MET. 1.664
1975
CODE COR. (11M)
21' BIT. MET.
21' BIT. MET. 1.664
21' BIT. MET.
Res. 0.410
0.664
0.664

444+74+ PCC.
32' VW
0.526
34' BRICK
0.081
416+97
P.C.C.
40' VW
2.132
449+02' (Orig. 60)
472+01-
482+90
32' HIB-
500' (712) (20)
555+06
Urban Limits Revised

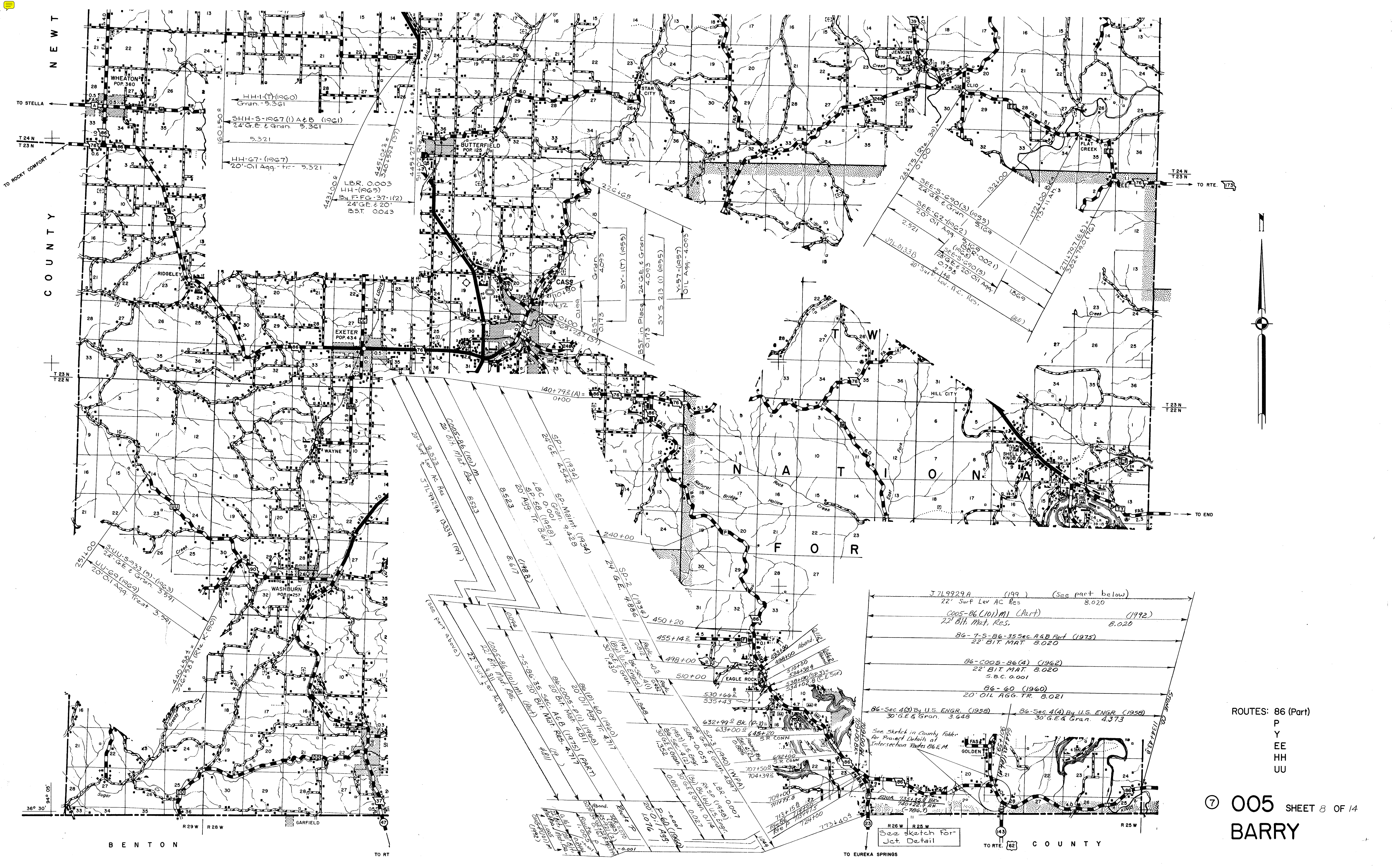
NOT ON SYSTEM
Old location of r/c
Transferred to city street 3-71
See change in r/c status
See Sheet #1
Transf. Re 37
See Sheet #1

410+00
416+97
444+74+ PCC.
32' VW
0.526
34' BRICK
0.081
449+02' (Orig. 60)
472+01-
482+90
32' HIB-
500' (712) (20)
555+06
Urban Limits Revised



See County Folder For Route Marking

ROUTES: 76



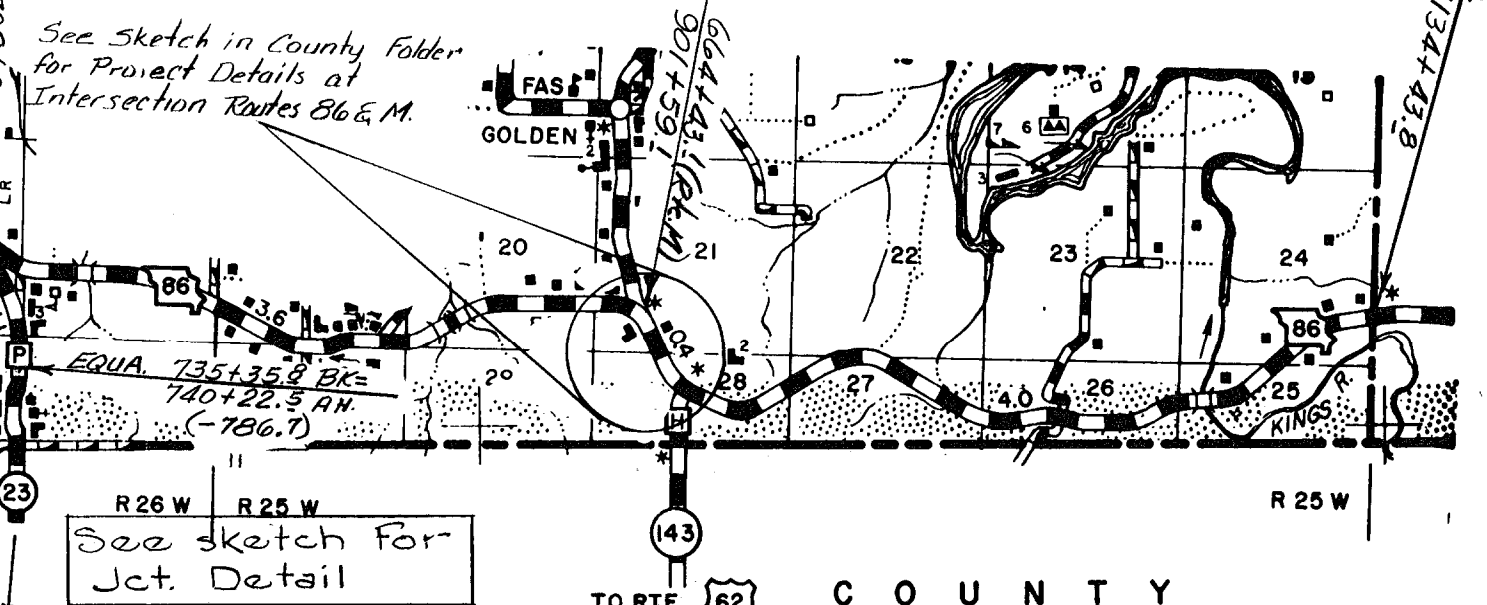
NEWTON COUNTY

BENTON COUNTY

ROUTES: 86 (Part)
 P
 Y
 EE
 HH
 UU

⑦ 005 SHEET 8 OF 14
BARRY

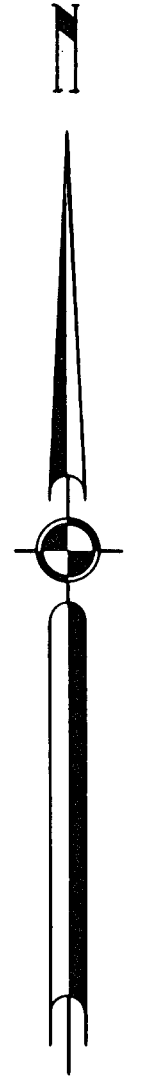
J7L9929A (199) (See part below)
 22' Surf Lev AC Res 8.020
 0005-86 (10) M1 (Part) (1992)
 22' BIT. Mat. Res. 8.020
 86-T-5-86-35 Sec. A&B Part (1975)
 22' BIT. MAT. 8.020
 86-005-86(4) (1962)
 22' BIT. MAT. 8.020
 S.B.C. 0.001
 86-60 (1960)
 20' OIL AGG. TR. 8.021
 86-Sec. 4(3) By U.S. ENGR. (1958) 30' G.E. & Gran. 3.648
 86-Sec. 4(4) By U.S. ENGR. (1958) 30' G.E. & Gran. 4.373

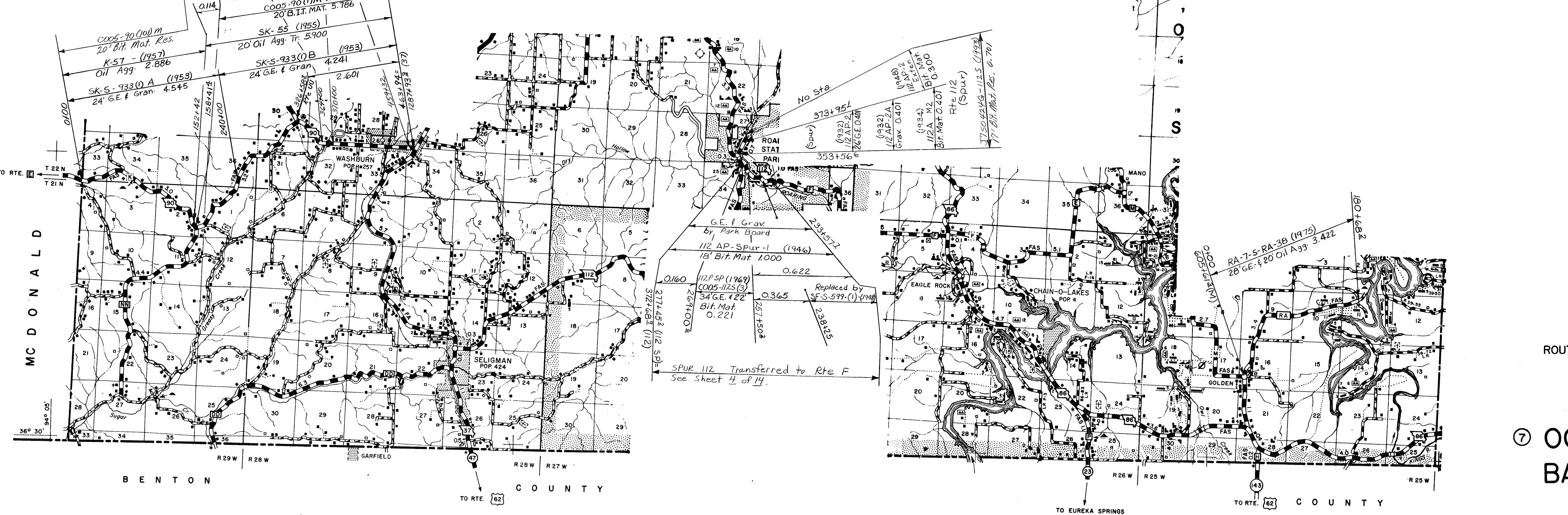
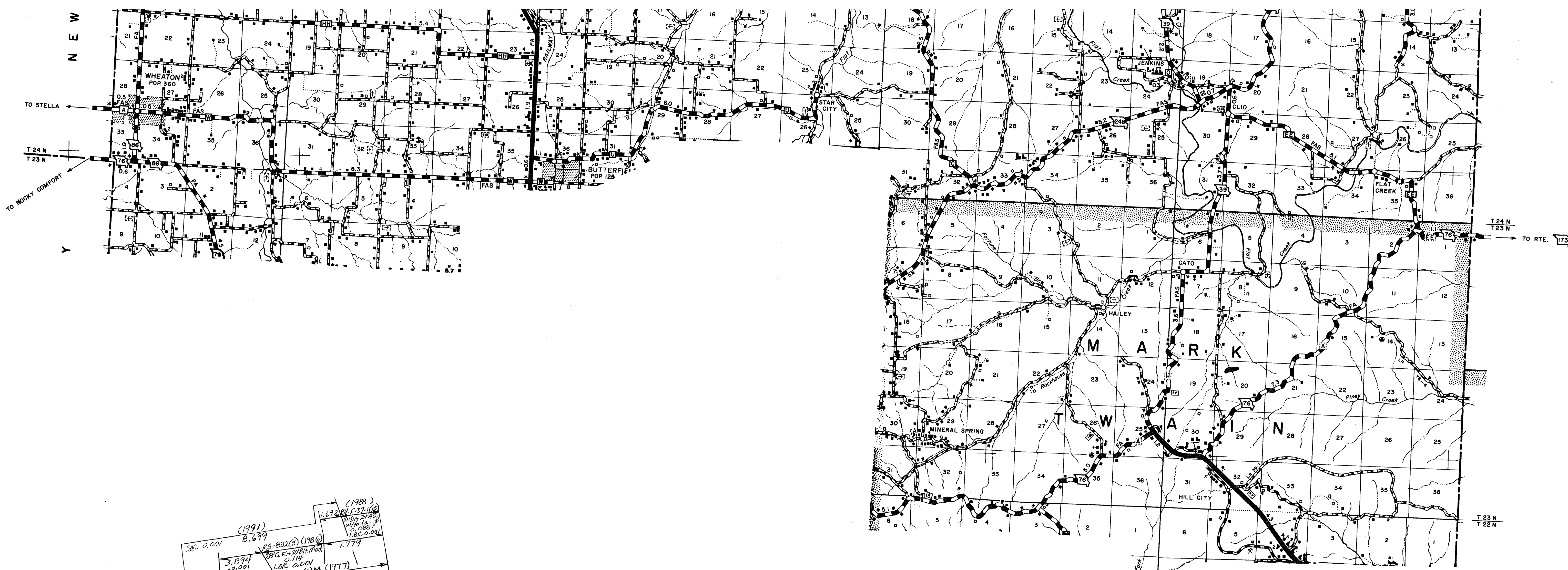


TO EUREKA SPRINGS

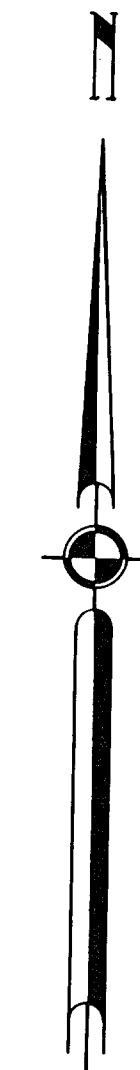
TO RTE. 162 COUNTY

TO RT



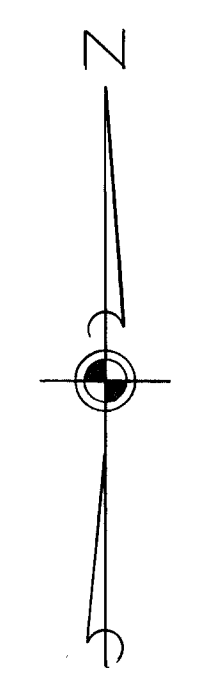
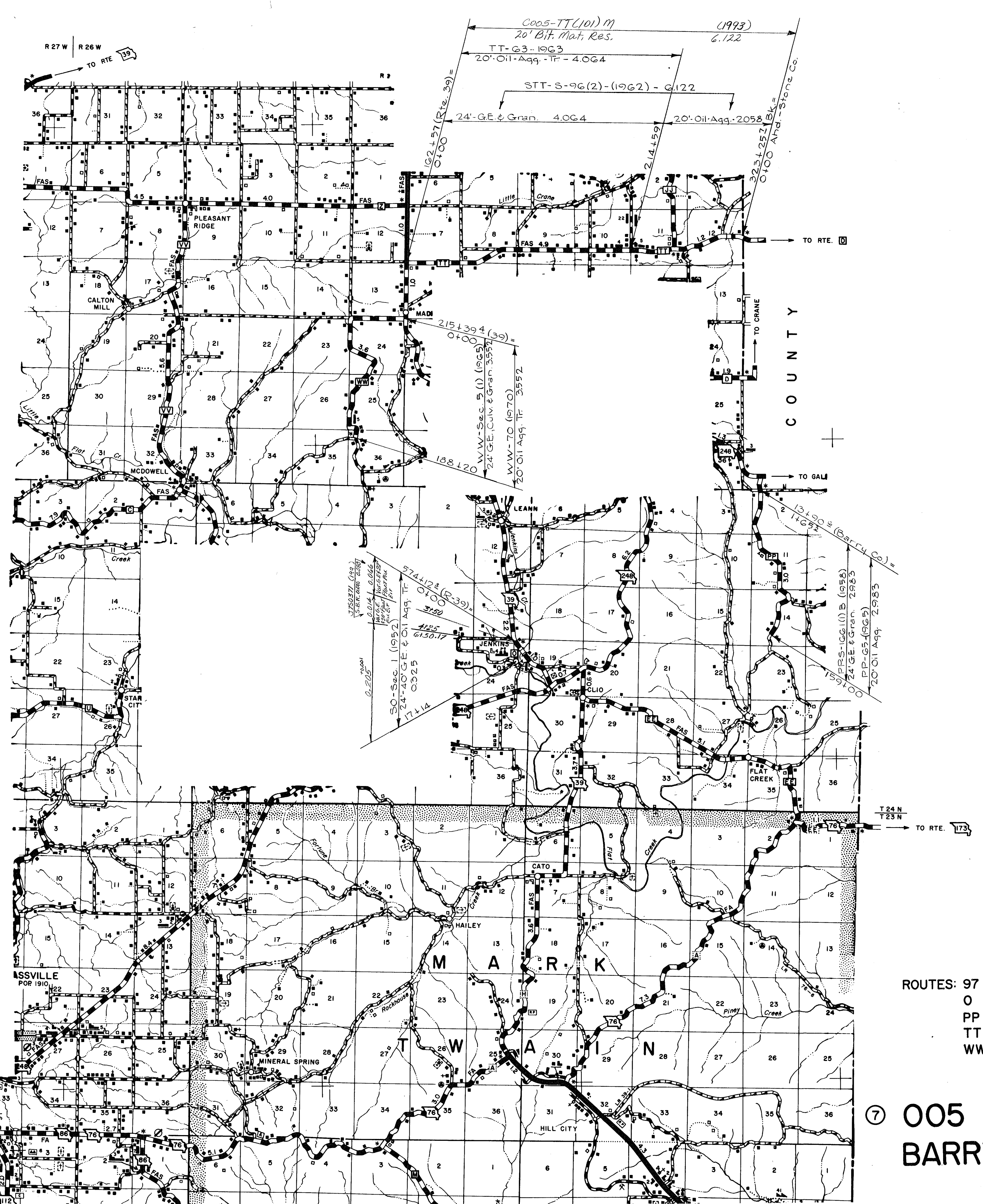
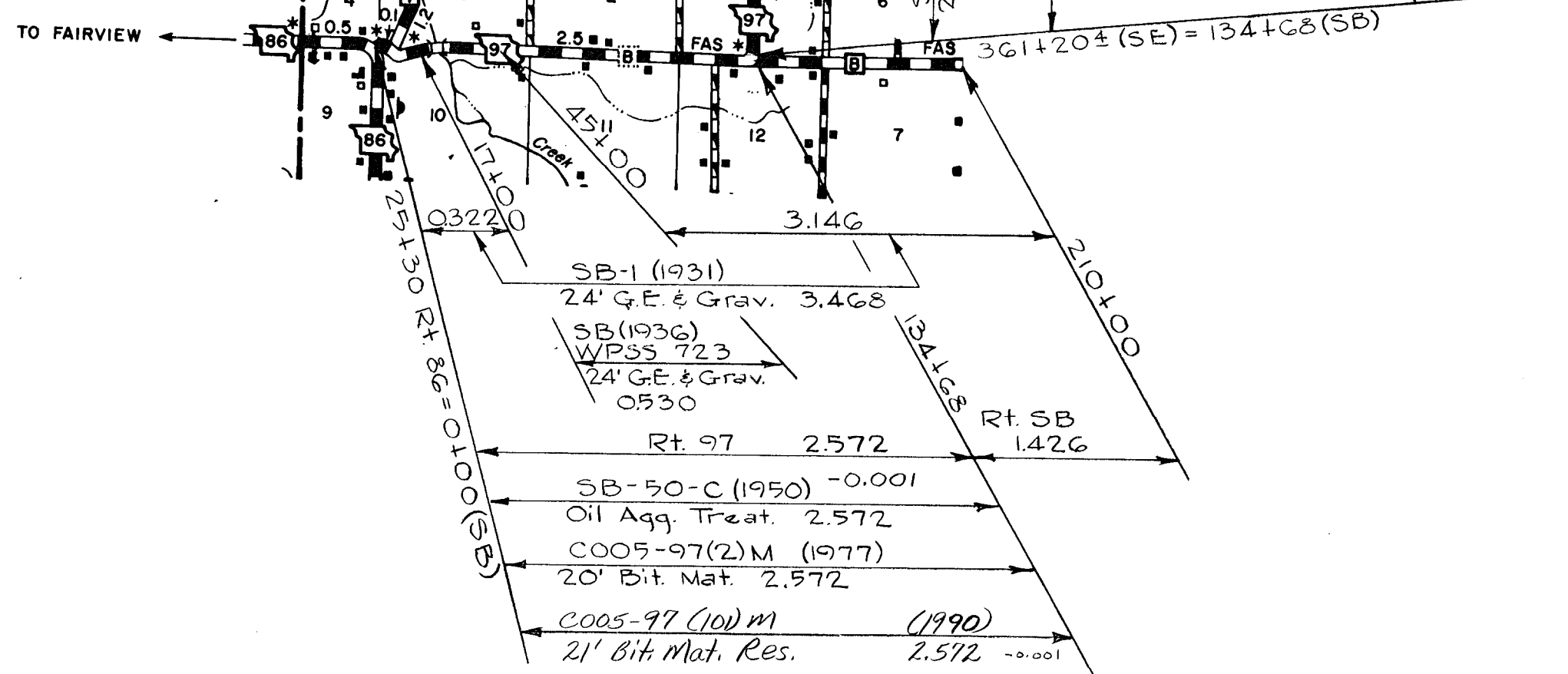
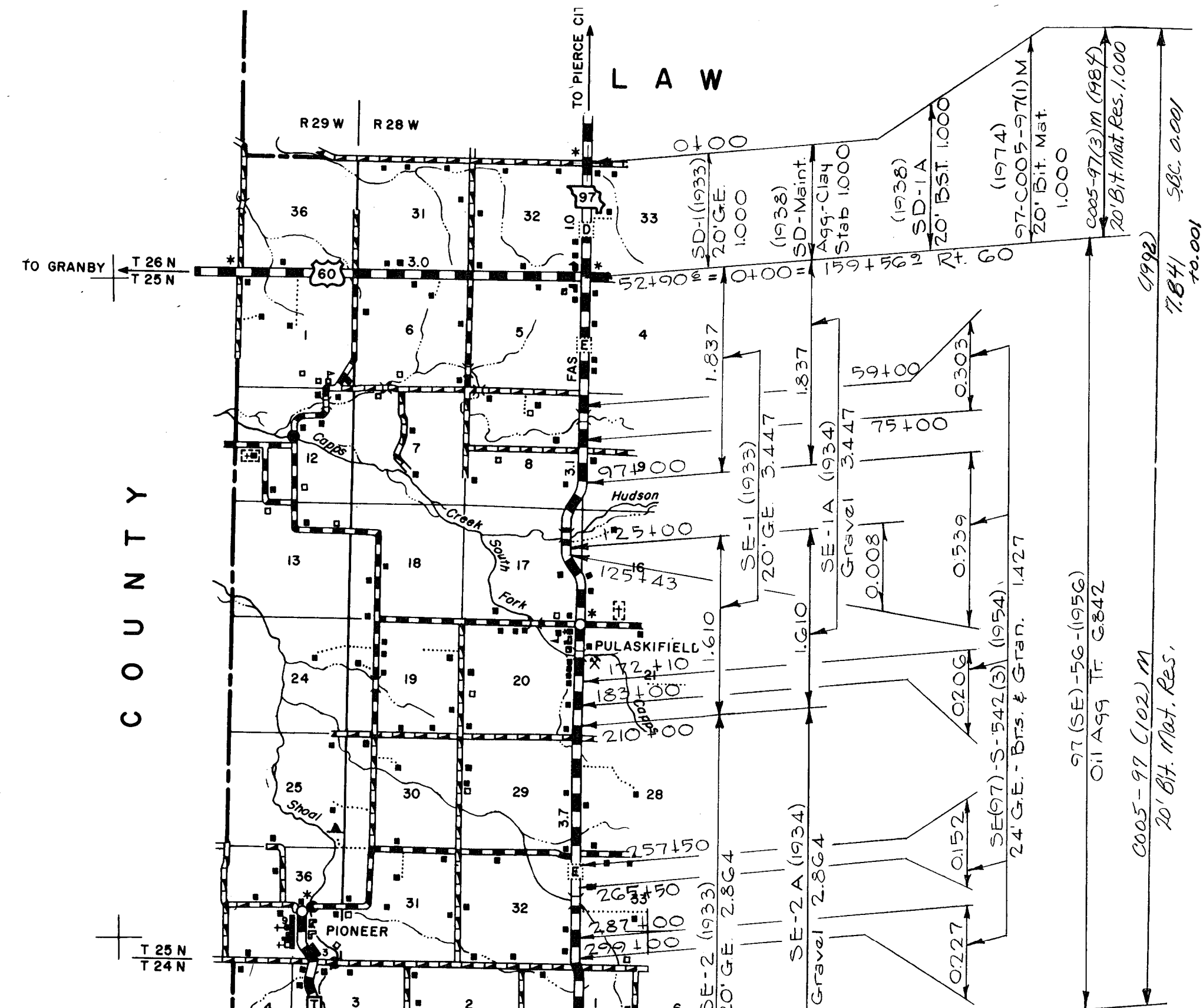


- Levee or Dike with Ro
- Natural Ford
- Paved Ford or Low W
- Bridge - General (span
- Small Bridges Closely
- Drawbridge
- Suspension Bridge
- Arch Bridge
- Steel Truss Bridge
- City, Town and Village
- Delimited Urban Area
- Park or Reservation B
- State Line
- County Line
- Civil Township Line

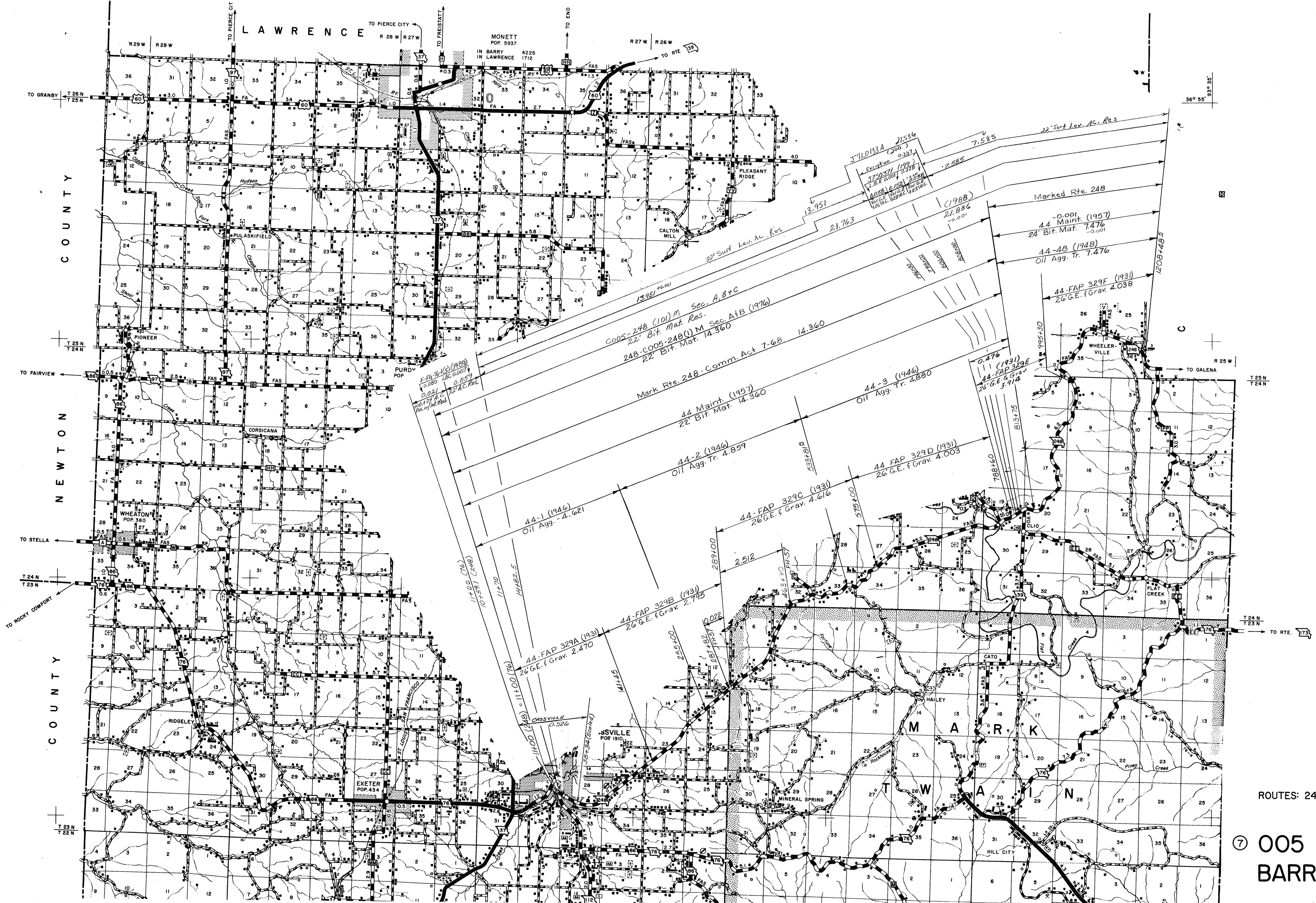


ROUTES: 90
112 Spur
RA

⑦ 005 SHEET 9 OF 14
BARRY



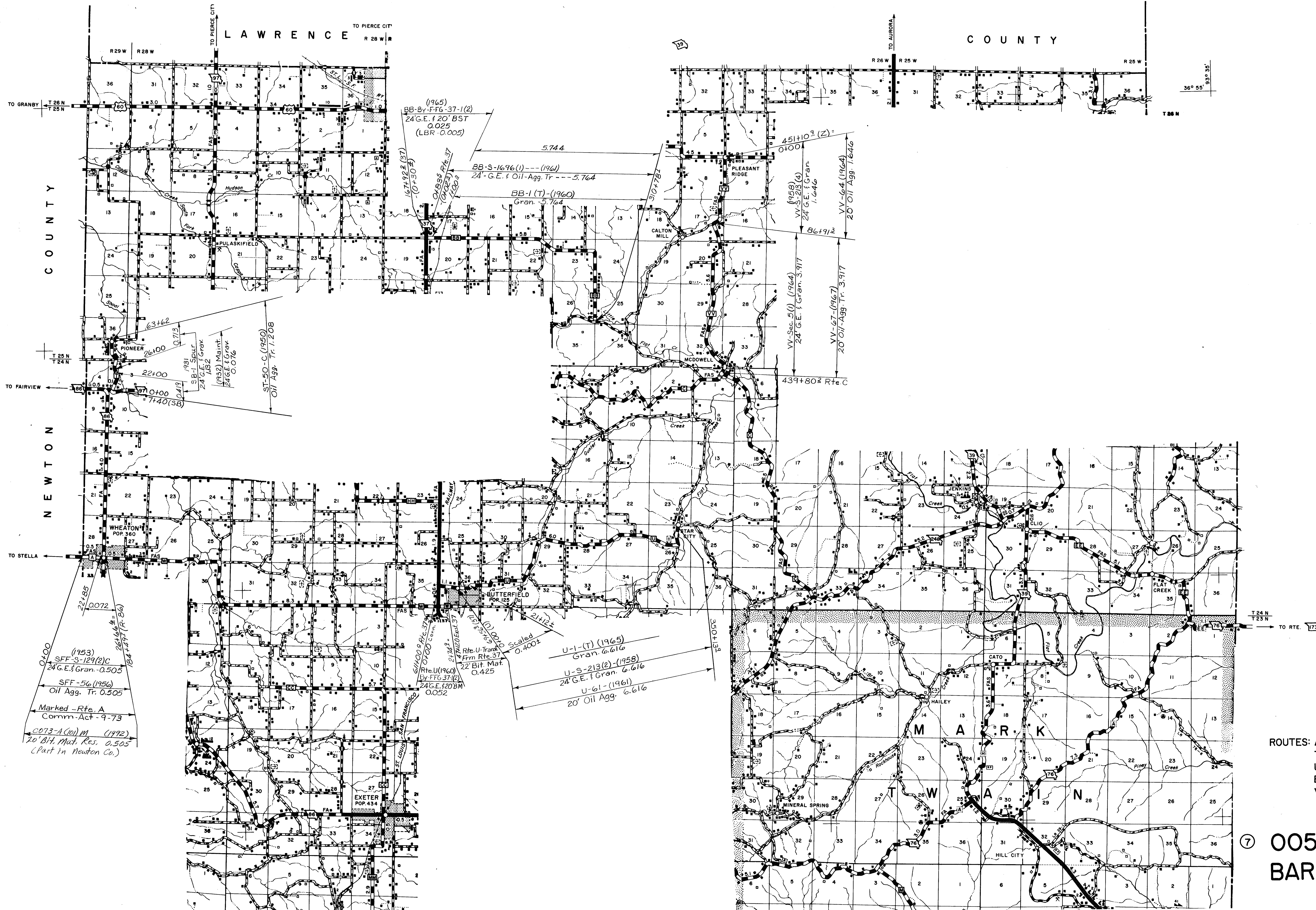
ROUTES: 97
 O
 PP
 TT
 WW



- Private Road
- ==== Unimproved Ro
- ==== Graded and Dr
- ==== Soil Surfaced F
- ==== Gravel or Stone
- ==== Bituminous Ro
- ==== Paved Road
- ==== Frontage Road
- ==== Divided Pavem
- ==== City Streets
- ==== Points between
- ==== Interstate Num
- ==== U.S. Numbere
- ==== State Number
- ==== State Lettered
- ==== Designation of
- ==== Federal-aid Pr
- ==== Federal-aid Se
- ==== Railroad - Sing
- ==== Railroads Adja
- ==== Railroad Static
- ==== Railroad Grade
- ==== Railroad Above
- ==== Railroad Below
- ==== Railroad Tunn
- ==== Military Air F
- ==== Commercial or
- ==== Landing Area
- ==== Airway Beaco
- ==== Operated Ship
- ==== Dock Pier or L
- ==== Ferry, TF : N
- ==== Navigable Str
- ==== Dam
- ==== Dam with Loc
- ==== Dam with Res
- ==== Wide Stream
- ==== Narrow Strea
- ==== Intermittent
- ==== Drainage Ditch
- ==== Marsh or Sw
- ==== Reservoir, P
- ==== Reservoir with
- ==== Levee or Dik
- ==== Natural Ford
- ==== Paved Ford
- ==== Bridge - Gen
- ==== Small Bridge
- ==== Drawbridge
- ==== Suspension
- ==== Arch Bridge
- ==== Steel Truss
- ==== City, Town
- ==== Delimited U
- ==== Park or Res
- ==== State Line
- ==== County Line
- ==== Civil Towns

ROUTES: 248

⑦ 005 SHEET 12 OF 14
BARRY



(1965)
BB-BY-FFG-37-1(2)
24' G.E. & 20' BST
0.025
(LBR 0.005)

BB-S-1696(1)---(1961)
24' G.E. & Oil-Agg. Tr ---5.764

BB-1(T)-(1960)
Gran-5.764

45110² (Z)
0+00

VV-Sec-5(1) (1964)
24' G.E. & Gran. 3.917

VV-64 (1964)
20' Oil-Agg. 1.646

VV-67 (1967)
20' Oil-Agg. Tr. 3.917

1931
SB-1 Spur
24' G.E. & Grav. 1.132

(1932) Maint.
24' G.E. & Grav. 0.076

ST-50-C (1950)
Oil Agg. Tr. 1.208

(1953)
SFF-S-129(2)C
24' G.E. & Gran. 0.505

SFF-56 (1956)
Oil Agg. Tr. 0.505

Marked -Rte. A
Comm. Act -9-73

0073-A (10) M (1972)
20' Bit. Mat. Res. 0.505
(Part in Newton Co.)

61100 S Rte. 37
0.020 Conn.

2174.8
Rte. U-Trans.
Frm Rte. 37
22' Bit. Mat.
0.425

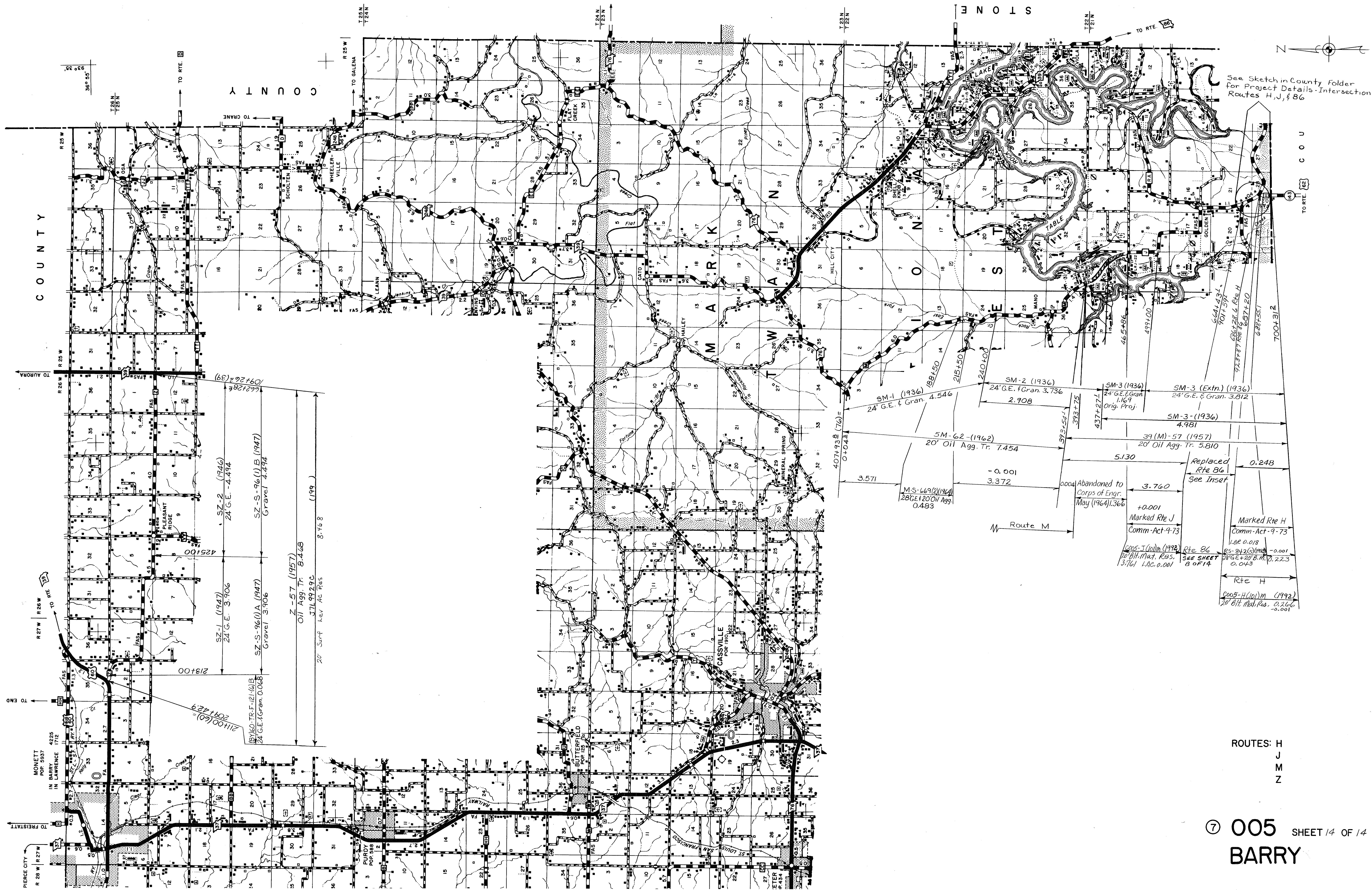
47120 Est. 37
0.052

U-1-(T) (1965)
Gran. 6.616

U-S-213(2) (1958)
24' G.E. & Gran. 6.616

U-61 (1961)
20' Oil Agg. 6.616

ROUTES: A
T
U
BB
VV



See Sketch in County Folder
for Project Details - Intersection
Routes H, J, & 86

SZ-1 (1947)
24' G.E. 3,906
 SZ-2 (1946)
24' G.E. 4,494
 SZ-S-96 (I) A. (1947)
Gravel 3,906
 SZ-S-96 (I) B. (1947)
Gravel 4,494
 Z-57 (1957)
Oil Agg. Tr. 8,468
 371,992.9c
 20' Surf Rev Ac Res
 8,468

SM-1 (1936)
24' G.E. & Gran. 4,546
 SM-2 (1936)
24' G.E. & Gran. 3,736
 SM-3 (1936)
24' G.E. & Gran. 1,169
 Orig. Proj.
 SM-3 (1936)
24' G.E. & Gran. 3,812
 SM-3 (Ext'n.) (1936)
24' G.E. & Gran. 4,981
 SM-3 (1936)
39 (M)-57 (1957)
20' Oil Agg. Tr. 5,810
 5,130
 Replaced
Rte 86
See Inset
 0.248
 Marked Rte H
Comm-Act-9-73
1.88 0.018
 20' B.H. Mat. Res. -0.001
 20' G.E. + 20' B.M. B. 2,273
 0.043
 Rte H
 0005-H(10)m (1992)
20' B.H. Mat. Res. 0,266
 -0.001
 3,571
 407+93.8 (70) =
0+0.43
 M-S-669(2)(1964)
28' G.E. 120' Oil Agg.
0.483
 SM-62-(1962)
20' Oil Agg. Tr. 7,454
 -0.001
 3,372
 0004 Abandoned to
Corps of Engr.
Way (1964) 1,366
 +0.001
 Marked Rte J
Comm-Act-9-73
 Route M
 373+75
 437+27.1
 573+54.1
 240+00
 215+50
 188+50
 465+86
 499+00
 664+43.1
 701+57
 684+22.6 Rte H
 923+87 Rte H
 807+20
 688+55.1
 700+51.2

ROUTES: H
 J
 M
 Z