

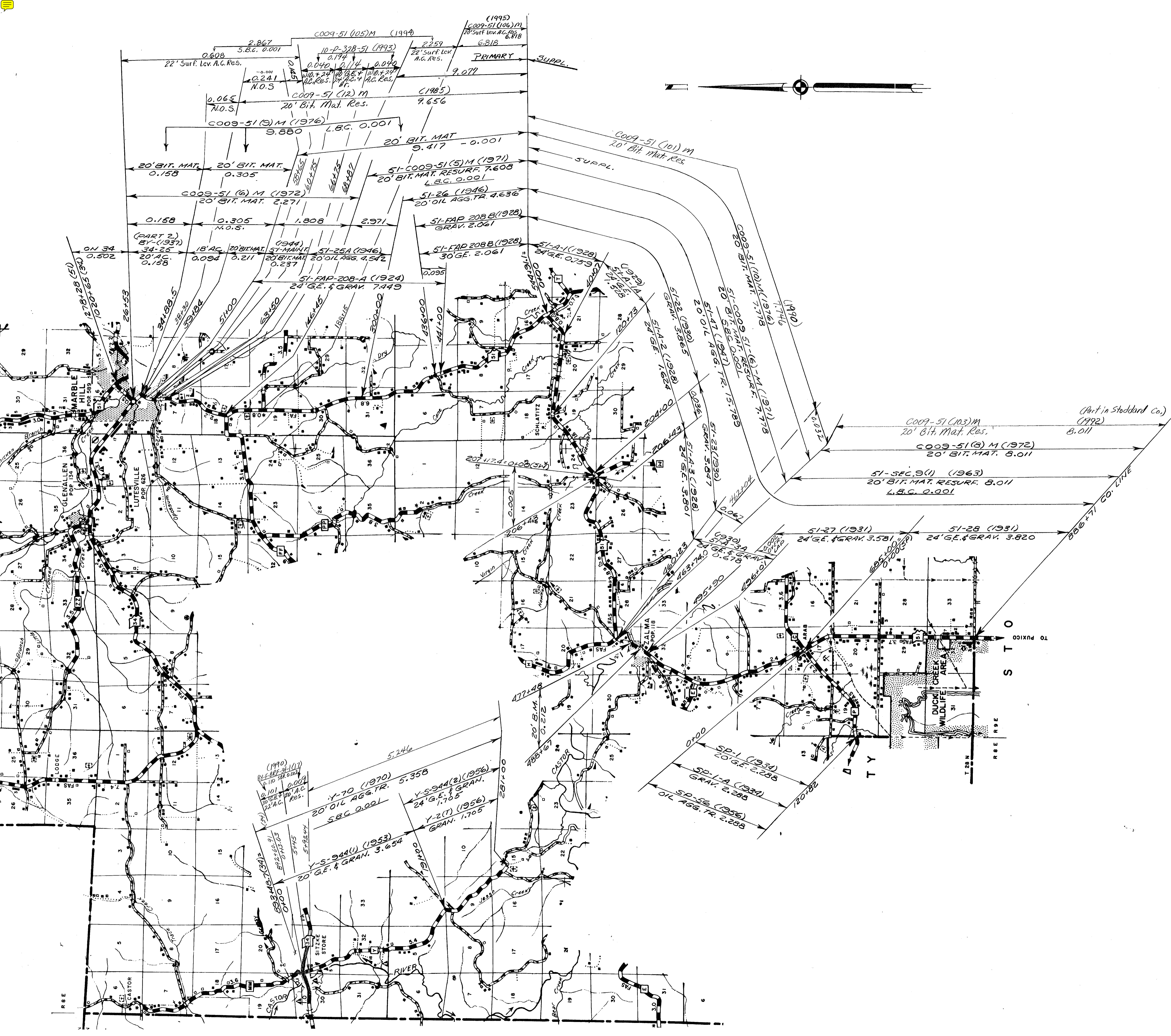
ROUTES 34  
72

SHEET 1 OF 8

009  
BOLLINGER

10

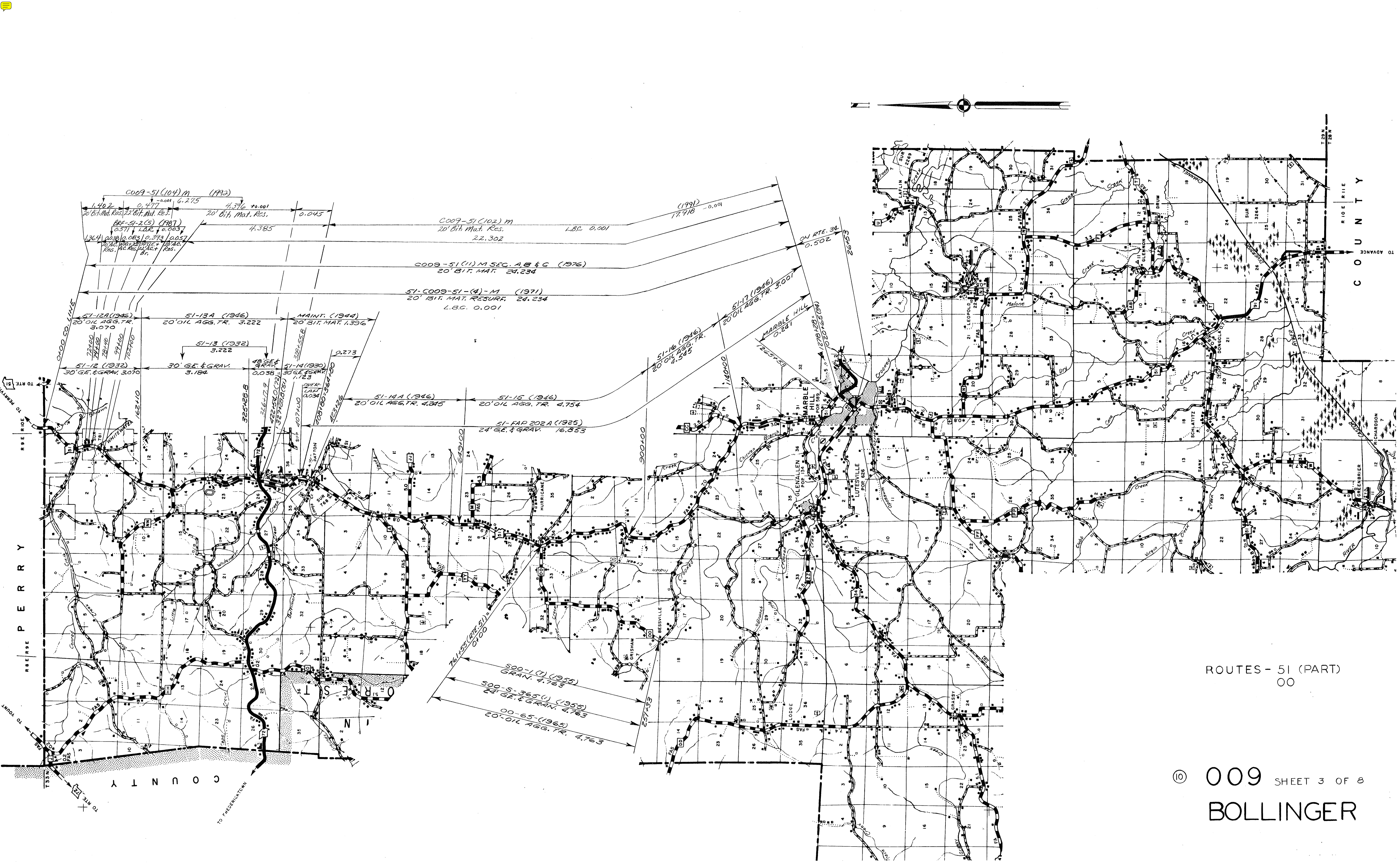




ROUTES - 51 (PART)  
Y  
P

© 009 SHEET 2 OF 8  
BOLLINGER

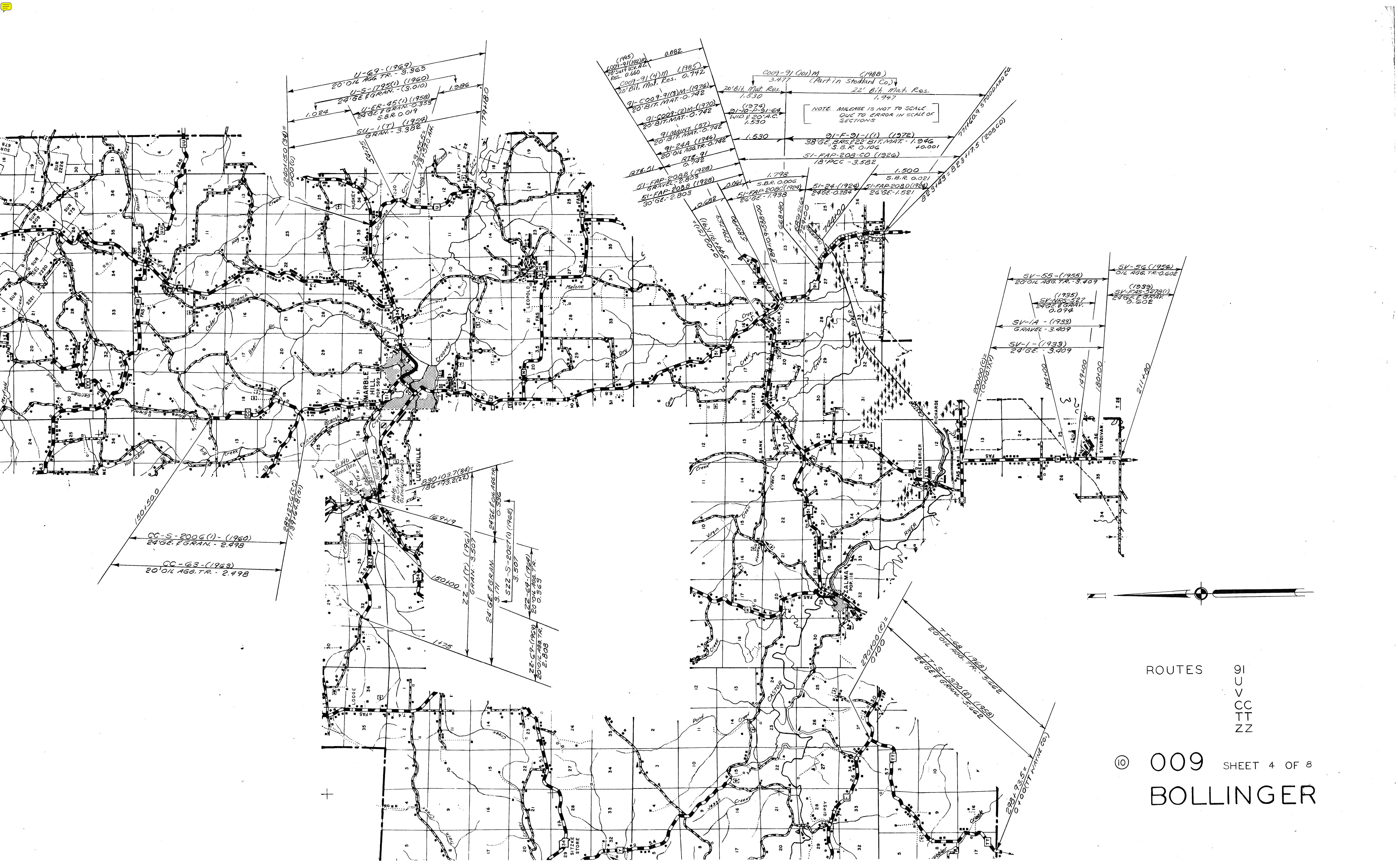




ROUTES - 51 (PART)  
00

⑩ 009 SHEET 3 OF 8  
BOLLINGER





(1945) 009-91(102)M  
 20' 5/8" MAT. RES. 0.660  
 009-91(4)M (1985)  
 20' Bit. Mat. Res. 0.742  
 91-C009-91(3)M (1976)  
 20' Bit. Mat. 0.742  
 91-C009-91(2)M (1970)  
 20' Bit. Mat. 0.742  
 91 MAINT (57)  
 20' Bit. Mat. 0.742  
 91-24A (1946)  
 20' OIL AGG. TR. 0.742  
 RTE. 91  
 0.742  
 51-FAP-208B (1928)  
 GRAVEL 2.803  
 51-FAP-208C (1928)  
 30' GE. 2.803  
 0.082  
 009-91 (C01)M (1988)  
 3.477 (Part in Stoddard Co.)  
 22' Bit. Mat. Res. 1.947  
 (1974)  
 21-10-2-91-64  
 WID & 20' A.C.  
 1.530  
 1.530  
 91-F-91-1(1) (1972)  
 38' GE. 5.852 22' Bit. Mat. 1.946  
 S.B.R. 0.106  
 +0.001  
 51-FAP-209-CD (1926)  
 18' PCC - 3.582  
 1.500  
 S.B.R. 0.021  
 51-24 (1924)  
 24' GE. 0.284  
 51-FAP-208D (1924)  
 24' GE. 1.521  
 0.061  
 S.B.R. 0.006  
 51-FAP-208C (1924)  
 24' GE. 1.938  
 1.792  
 S.B.R. 0.006  
 51-24 (1924)  
 24' GE. 0.284  
 1.500  
 S.B.R. 0.021  
 51-FAP-208D (1924)  
 24' GE. 1.521

NOTE: MILEAGE IS NOT TO SCALE  
DUE TO ERROR IN SCALE OF  
SECTIONS

U-69 (1969)  
 20' OIL AGG. TR. - 3.963  
 U-S-1795(1) (1960)  
 24' GE. E.GRAN. - (3.010) 1.986  
 1.024  
 U-ER-45(1) (1958)  
 24' GE. E.GRAN. 0.333  
 S.B.R. 0.019  
 SU-1(T) (1954)  
 GRAN. - 3.382  
 1794.30  
 1794.30

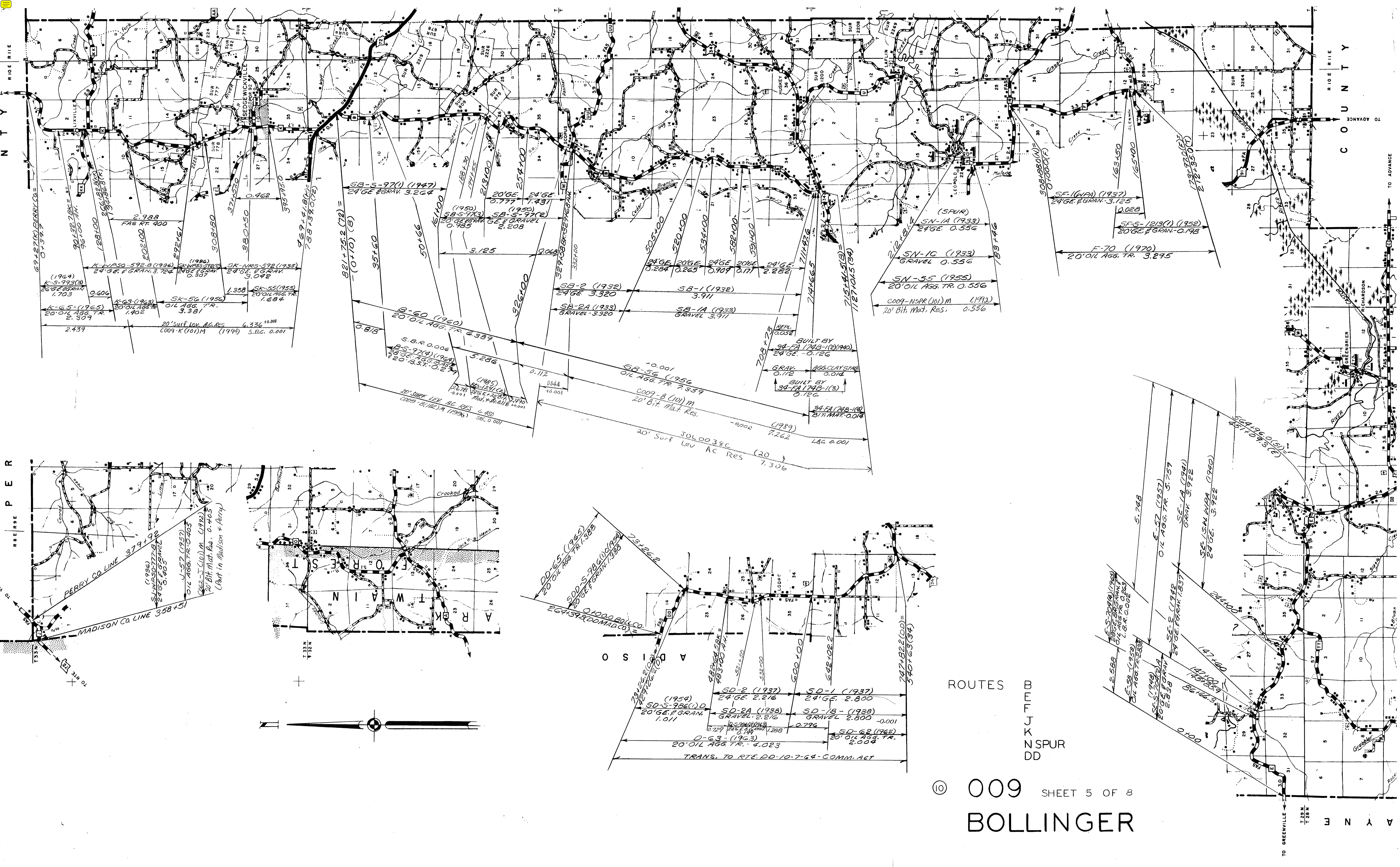
1501.500  
 CC-S-2006(1) - (1960)  
 24' GE. E.GRAN. - 2.498  
 CC-63 (1963)  
 20' OIL AGG. TR. - 2.498  
 1199.76.8(5)  
 289.12.5(5)  
 330.103.7(34)  
 286.793.2(22)  
 169.49  
 ZZ-1(T) (1961)  
 GRAN. 3.507  
 24' GE. E.GRAN.  
 3.171  
 SZZ-S-2027(1) (1962)  
 3.507  
 ZZ-69 (1969)  
 20' OIL AGG. TR.  
 0.363  
 ZZ-57 (1967)  
 20' OIL AGG. TR.  
 2.808

SV-55 (1955)  
 20' OIL AGG. TR. - 3.409  
 (1935)  
 SV-NES-327  
 24' GE. E.GRAN.  
 0.074  
 SV-1A (1938)  
 GRAVEL - 3.409  
 SV-1 (1939)  
 24' GE. - 3.409  
 SV-56 (1956)  
 OIL AGG. TR. 0.602  
 (1939)  
 SV-FAS-5278(1)  
 24' GE. E.GRAN.  
 0.602

ROUTES  
 91  
 U  
 V  
 CC  
 TT  
 ZZ

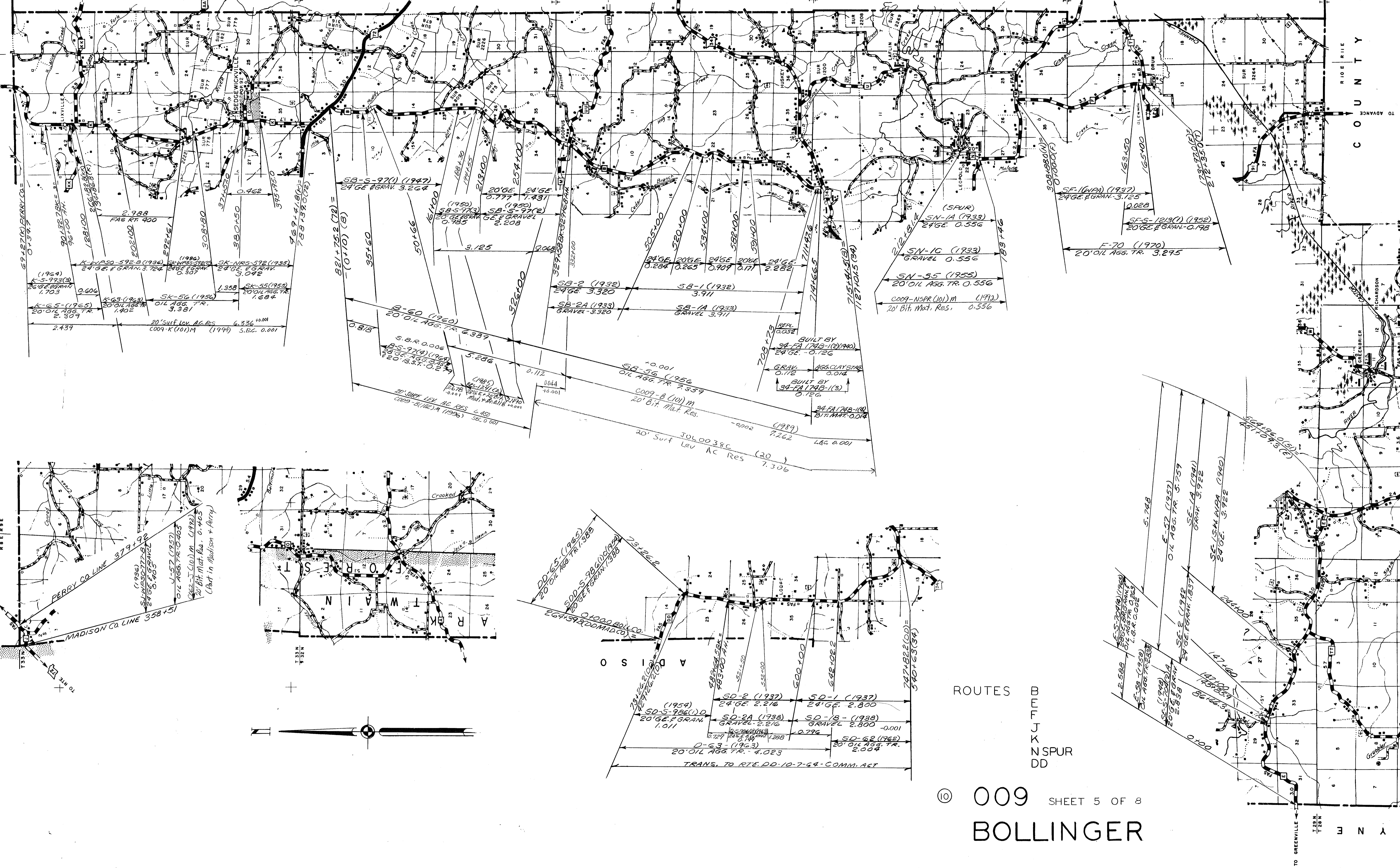
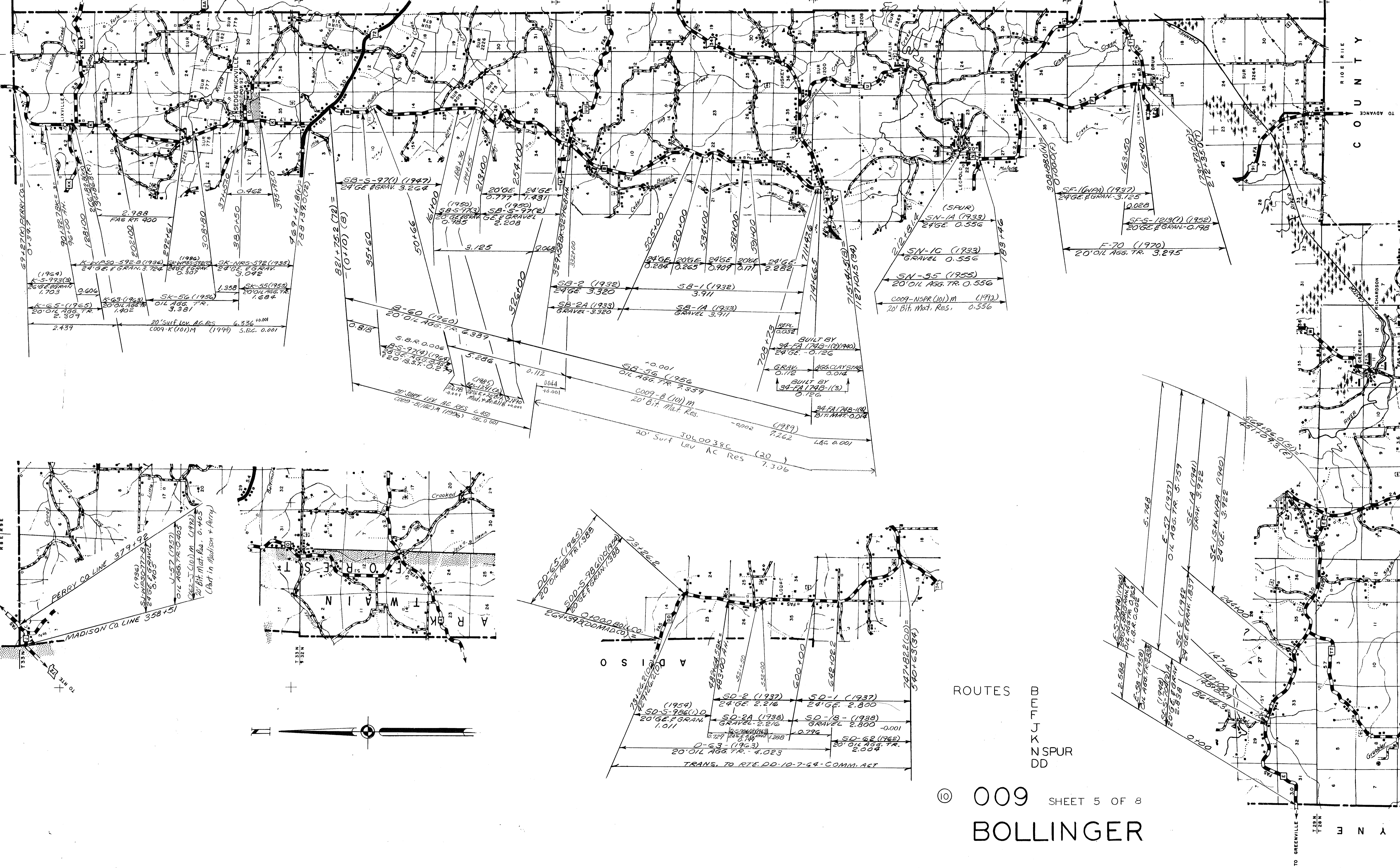
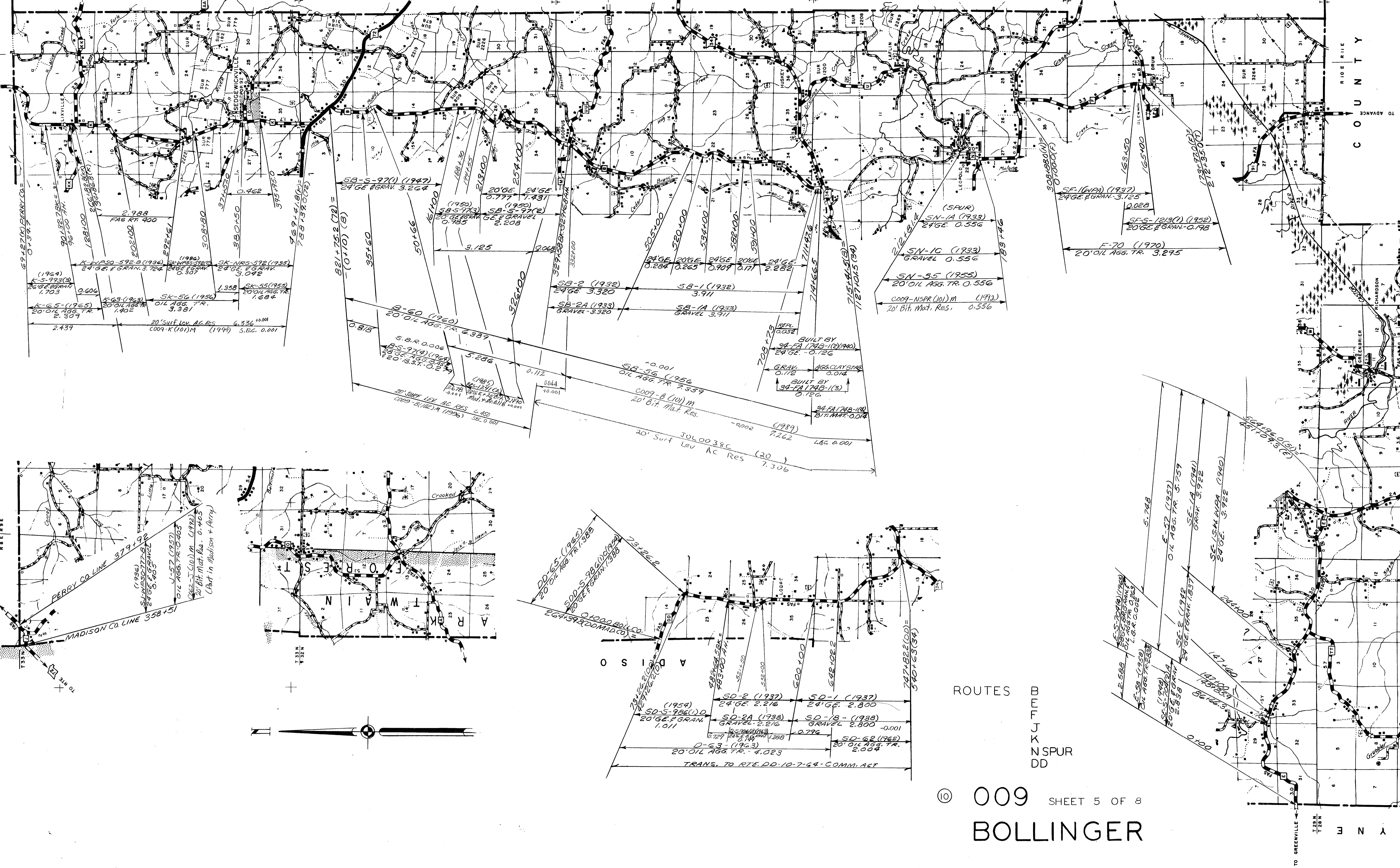
009 SHEET 4 OF 8  
 BOLLINGER



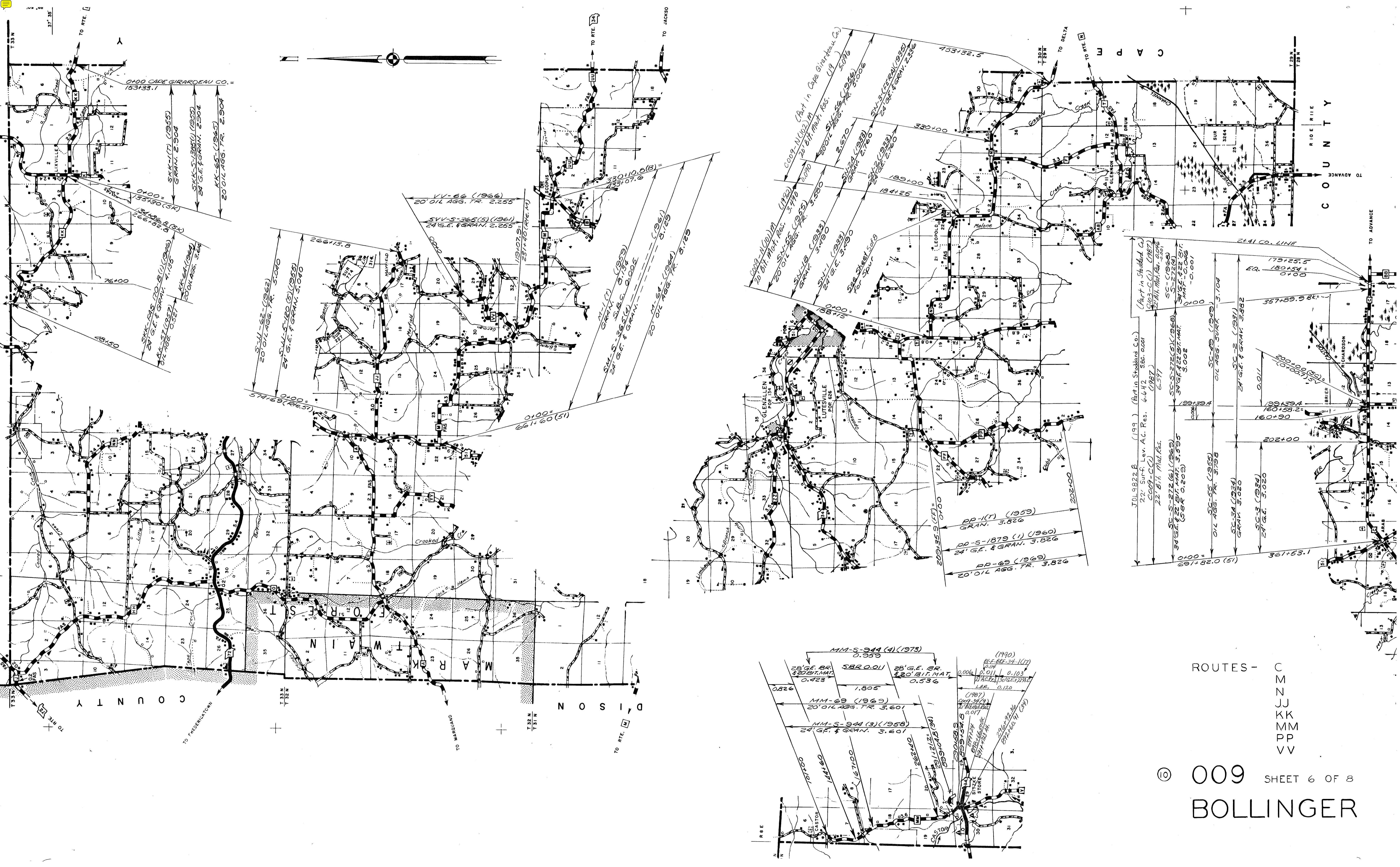


ROUTES  
 BULFINCH  
 NSPUR  
 DD

© 009 SHEET 5 OF 8  
 BOLLINGER





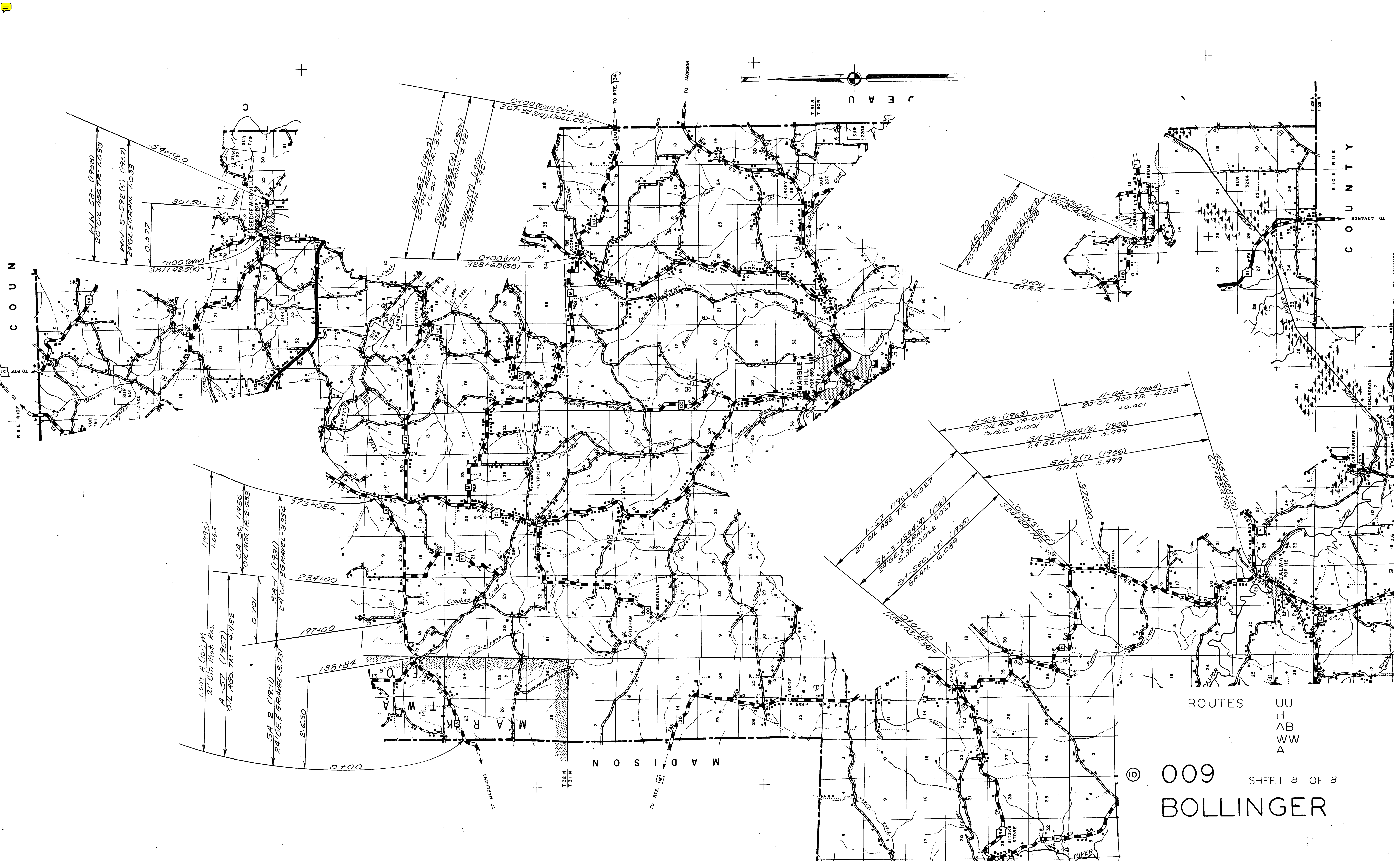


ROUTES - C  
M  
N  
JJ  
KK  
MM  
PP  
VV









COUN

MADISON

TO ADVANCE  
C O U N T Y

ROUTES  
 UU  
 H  
 AB  
 WW  
 A

© 009 SHEET 8 OF 8  
 BOLLINGER

009-A (001) M  
 21' 6" Mat. Res.  
 A-57 (1957)  
 87L AGG. TR. - 4.432

SA-2 (1951)  
 24' GE. GRAN. - 3.75

SA-56 (1956)  
 20' OIL AGG. TR. - 2.653

SA-1 (1951)  
 24' GE. GRAN. - 3.394

373+02.6

234+00

197+00

138+84

2.630

0+00

0+00 (WVA)  
 381+92.5(K)

0+00 (W)  
 328+68(68)

0+00 (SW) CAP. CO.  
 207+32 (W) BOLL. CO.

UU-63 (1963)  
 20' OIL AGG. TR. - 3.921

SU-55 (1955)  
 24' GE. GRAN. - 3.921

SU-17 (1956)  
 GRAN. - 3.921

H-63 (1963)  
 20' OIL AGG. TR. - 0.970  
 S.B.C. 0.001

SH-S-1949(2) (1956)  
 24' GE. GRAN. - 5.999

SH-2 (T) (1956)  
 GRAN. - 5.999

H-67 (1967)  
 20' OIL AGG. TR. - 6.027

SH-S-1949(3) (1956)  
 24' GE. GRAN. - 6.027

SH-SEC. (C) (1956)  
 GRAN. - 6.027

H-64 (1964)  
 20' OIL AGG. TR. - 4.528  
 10.001

10+00 (S) (S) (S)  
 327+60 (S) (S) (S)

335+00

45+08.8(S)

41+22+61

0+00 CO. RD.

AB-70 (1970)  
 20' OIL AGG. TR. - 1928

AB-S-1222(2) (1957)  
 24' GE. GRAN. - 1928

127+51.0(C)  
 0+00 (AD)

3264

3264

3264

3264

3264

3264

3264

3264

3264

3264

3264

3264

3264