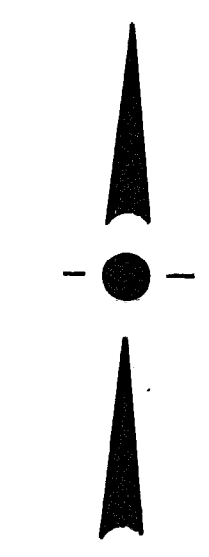
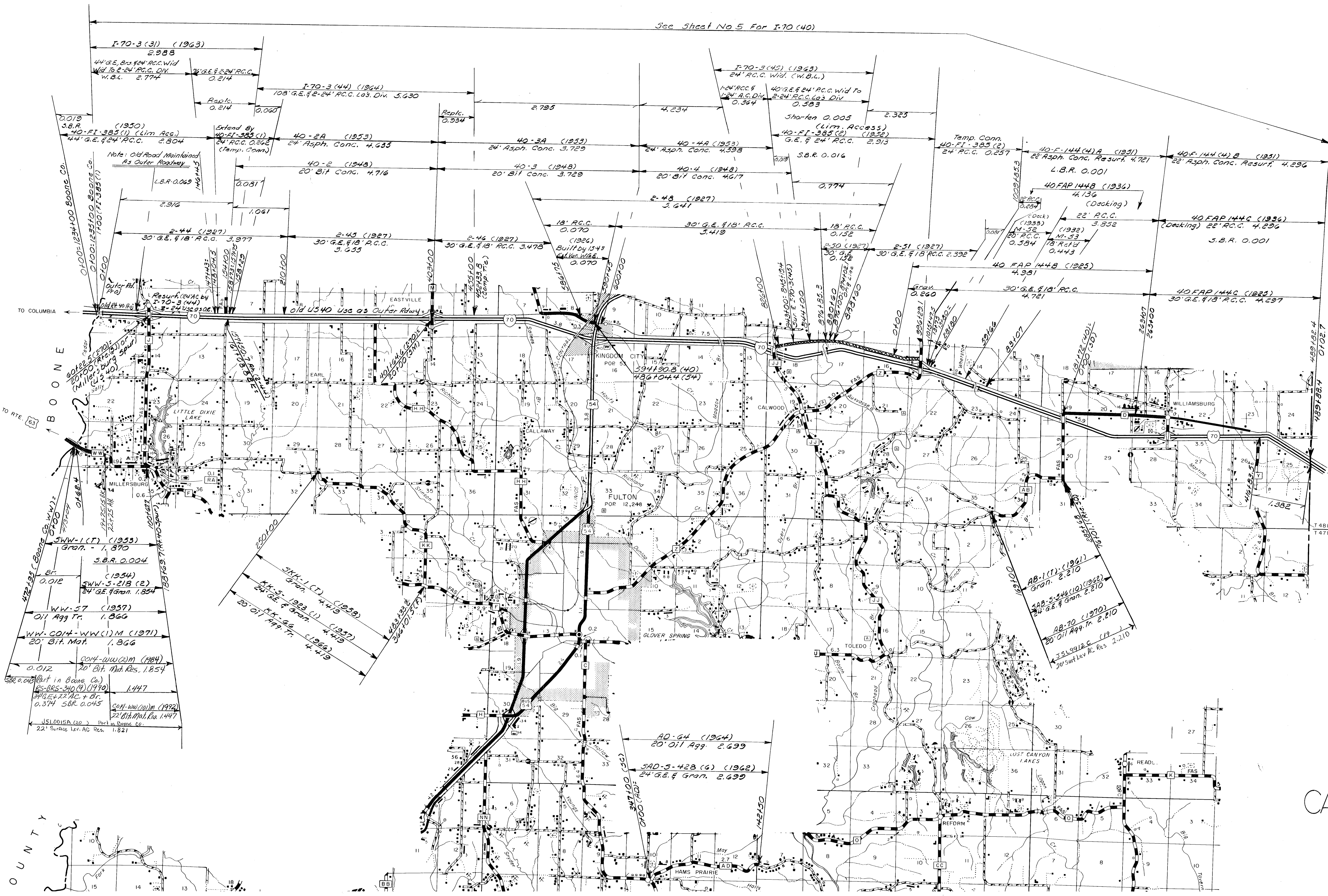
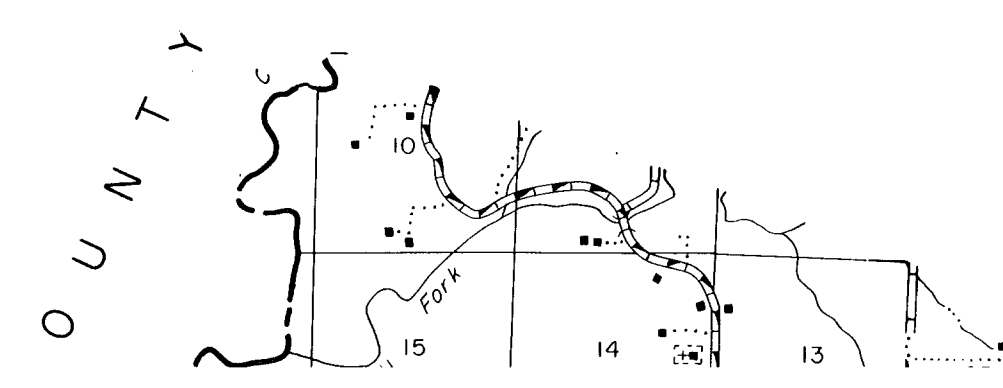


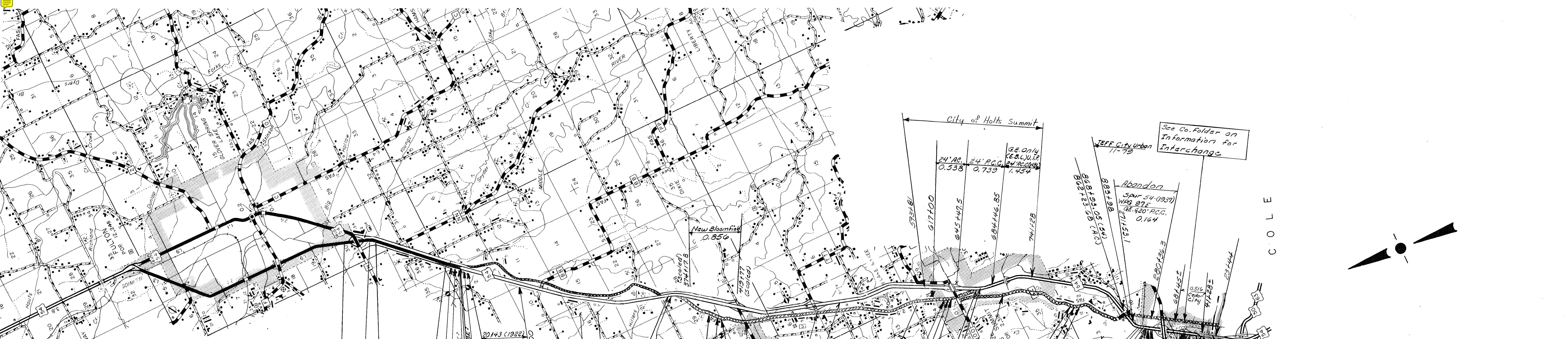
See Sheet No 5 For I-70 (40)



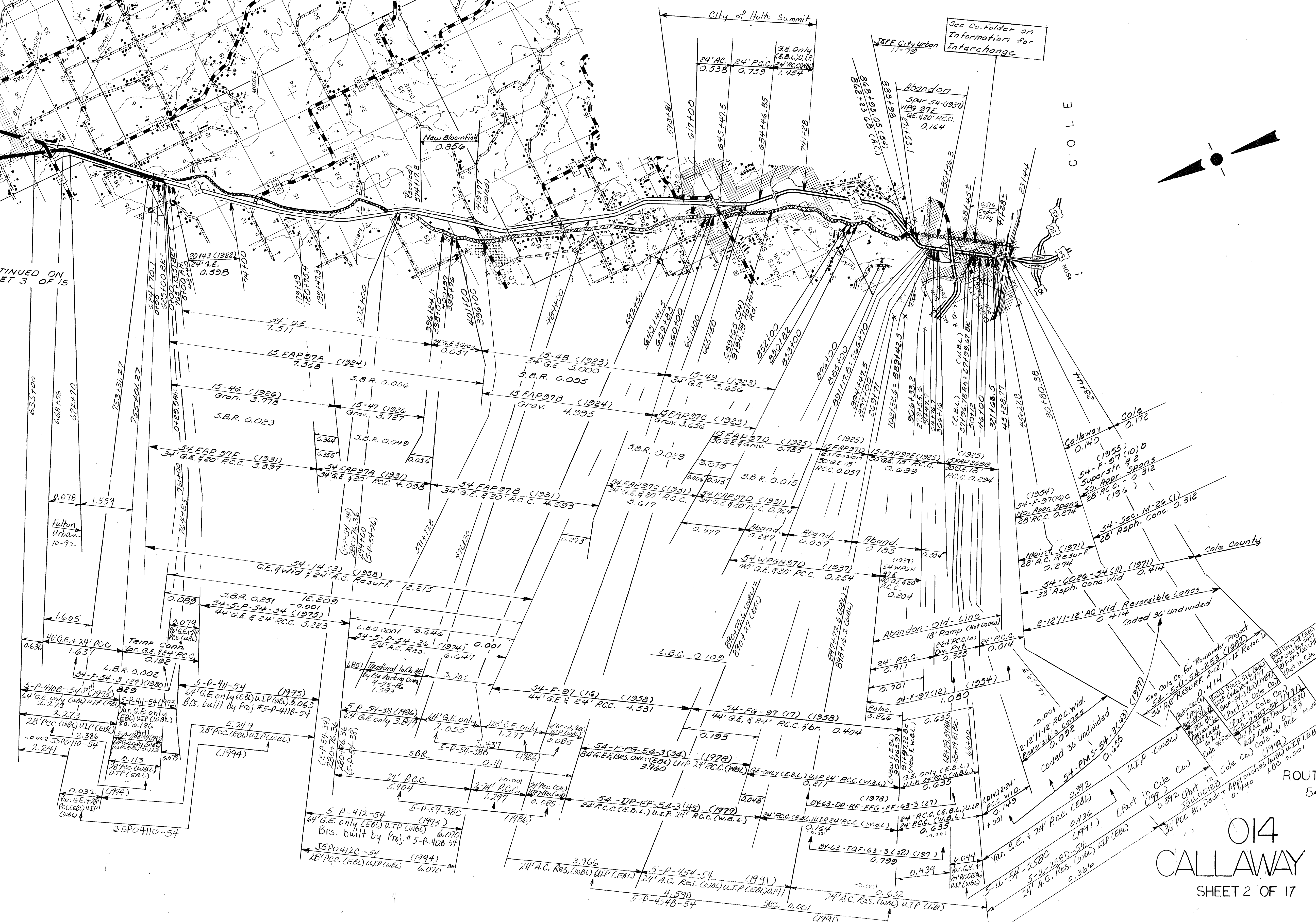
ROUTES
 40 HISTORICAL DATA
 KK
 WW
 AB
 AD

014
 CALLAWAY CO.
 SHEET 1 OF 17





CONTINUED ON SHEET 3 OF 15



See Co. Folder on Information for Interchange

014
CALLAWAY CO
SHEET 2 OF 17

ROUTES 54 (PART)

See Co. Folder on Information for Interchange

11-79

SPUR 54 (1937)
WRG 27E
4E 420' P.C.C.
0.164

Abandon
SPUR 54 (1937)
WRG 27E
4E 420' P.C.C.
0.164

15-FAP97A (1924)
34' GE 7.563

15-48 (1923)
34' GE 5.000
S.B.R. 0.005

15-46 (1924)
Grav. 3.778

15-47 (1924)
Grav. 3.727

15-FAP97B (1924)
Grav. 4.995

15-FAP97C (1925)
Grav. 3.656

15-FAP97D (1925)
30' GE 9' Grav. 0.785

15-FAP97E (1925)
30' GE 18' P.C.C.
R.C.C. 0.057

15-FAP97F (1925)
30' GE 18' P.C.C.
R.C.C. 0.294

15-FAP97G (1931)
34' GE 420' P.C.C.
3.617

15-FAP97H (1931)
34' GE 420' P.C.C.
0.764

15-FAP97I (1931)
34' GE 420' P.C.C.
0.264

15-FAP97J (1937)
40' GE 420' P.C.C.
0.254

15-FAP97K (1937)
40' GE 420' P.C.C.
0.204

15-FAP97L (1937)
40' GE 420' P.C.C.
0.204

15-FAP97M (1937)
40' GE 420' P.C.C.
0.204

15-FAP97N (1937)
40' GE 420' P.C.C.
0.204

15-FAP97O (1937)
40' GE 420' P.C.C.
0.204

15-FAP97P (1937)
40' GE 420' P.C.C.
0.204

15-FAP97Q (1937)
40' GE 420' P.C.C.
0.204

15-FAP97R (1937)
40' GE 420' P.C.C.
0.204

15-FAP97S (1937)
40' GE 420' P.C.C.
0.204

15-FAP97T (1937)
40' GE 420' P.C.C.
0.204

15-FAP97U (1937)
40' GE 420' P.C.C.
0.204

15-FAP97V (1937)
40' GE 420' P.C.C.
0.204

15-FAP97W (1937)
40' GE 420' P.C.C.
0.204

15-FAP97X (1937)
40' GE 420' P.C.C.
0.204



ROUTE DATA CONTINUED FROM SHEET 2 OF 15

ROUTES
54(PART)
54 BUS.
AE

014
CALLAWAY CO.
SHEET 3 OF 17

All Urban Approved 10-92

RTE. 54 BUSINESS
Comm. Act. 5-3-68 (5,844)

24' A.C. BY CON. 54 (121967) NO. 2
MAIN 0.830

24' A.C. CITY P.C. 54-NRM-204B (1994)
0.700 NOT ON SYSTEM (0.130)

24' A.C. 54-COM-54 (4)
40' G.E. 24' P.C. 0.226

24' A.C. 54-COM-54 (4)
40' G.E. 24' P.C. 0.226

24' A.C. 54-COM-54 (4)
40' G.E. 24' P.C. 0.226

24' A.C. 54-COM-54 (4)
40' G.E. 24' P.C. 0.226

24' A.C. 54-COM-54 (4)
40' G.E. 24' P.C. 0.226

24' A.C. 54-COM-54 (4)
40' G.E. 24' P.C. 0.226

24' A.C. 54-COM-54 (4)
40' G.E. 24' P.C. 0.226

24' A.C. 54-COM-54 (4)
40' G.E. 24' P.C. 0.226

24' A.C. 54-COM-54 (4)
40' G.E. 24' P.C. 0.226

24' A.C. 54-COM-54 (4)
40' G.E. 24' P.C. 0.226

24' A.C. 54-COM-54 (4)
40' G.E. 24' P.C. 0.226

24' A.C. 54-COM-54 (4)
40' G.E. 24' P.C. 0.226

24' A.C. 54-COM-54 (4)
40' G.E. 24' P.C. 0.226

24' A.C. 54-COM-54 (4)
40' G.E. 24' P.C. 0.226

24' A.C. 54-COM-54 (4)
40' G.E. 24' P.C. 0.226

24' A.C. 54-COM-54 (4)
40' G.E. 24' P.C. 0.226

24' A.C. 54-COM-54 (4)
40' G.E. 24' P.C. 0.226

24' A.C. 54-COM-54 (4)
40' G.E. 24' P.C. 0.226

24' A.C. 54-COM-54 (4)
40' G.E. 24' P.C. 0.226

24' A.C. 54-COM-54 (4)
40' G.E. 24' P.C. 0.226

24' A.C. 54-COM-54 (4)
40' G.E. 24' P.C. 0.226

24' A.C. 54-COM-54 (4)
40' G.E. 24' P.C. 0.226

24' A.C. 54-COM-54 (4)
40' G.E. 24' P.C. 0.226

24' A.C. 54-COM-54 (4)
40' G.E. 24' P.C. 0.226

24' A.C. 54-COM-54 (4)
40' G.E. 24' P.C. 0.226

24' A.C. 54-COM-54 (4)
40' G.E. 24' P.C. 0.226

24' A.C. 54-COM-54 (4)
40' G.E. 24' P.C. 0.226

24' A.C. 54-COM-54 (4)
40' G.E. 24' P.C. 0.226

24' A.C. 54-COM-54 (4)
40' G.E. 24' P.C. 0.226

24' A.C. 54-COM-54 (4)
40' G.E. 24' P.C. 0.226

24' A.C. 54-COM-54 (4)
40' G.E. 24' P.C. 0.226

24' A.C. 54-COM-54 (4)
40' G.E. 24' P.C. 0.226

24' A.C. 54-COM-54 (4)
40' G.E. 24' P.C. 0.226

24' A.C. 54-COM-54 (4)
40' G.E. 24' P.C. 0.226

24' A.C. 54-COM-54 (4)
40' G.E. 24' P.C. 0.226

24' A.C. 54-COM-54 (4)
40' G.E. 24' P.C. 0.226

24' A.C. 54-COM-54 (4)
40' G.E. 24' P.C. 0.226

24' A.C. 54-COM-54 (4)
40' G.E. 24' P.C. 0.226

24' A.C. 54-COM-54 (4)
40' G.E. 24' P.C. 0.226

24' A.C. 54-COM-54 (4)
40' G.E. 24' P.C. 0.226

24' A.C. 54-COM-54 (4)
40' G.E. 24' P.C. 0.226

24' A.C. 54-COM-54 (4)
40' G.E. 24' P.C. 0.226

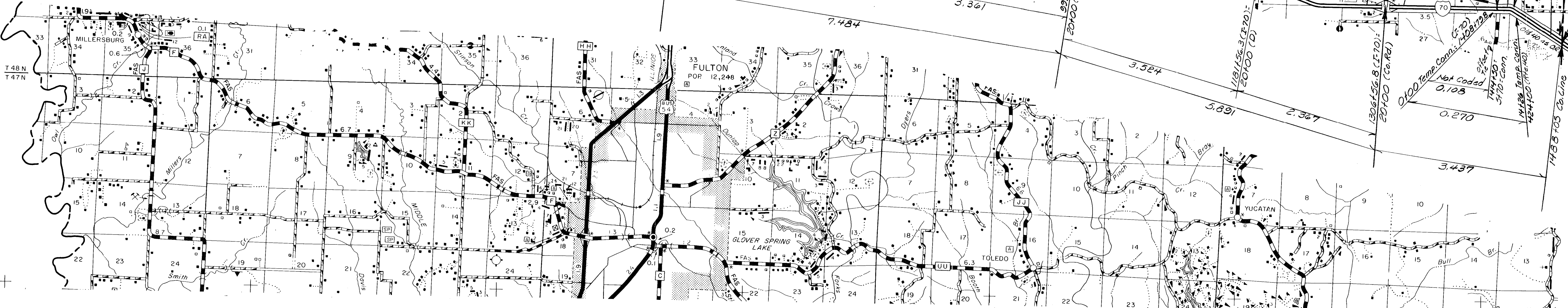
24' A.C. 54-COM-54 (4)
40' G.E. 24' P.C. 0.226



147 N

ROUTES
63
CC

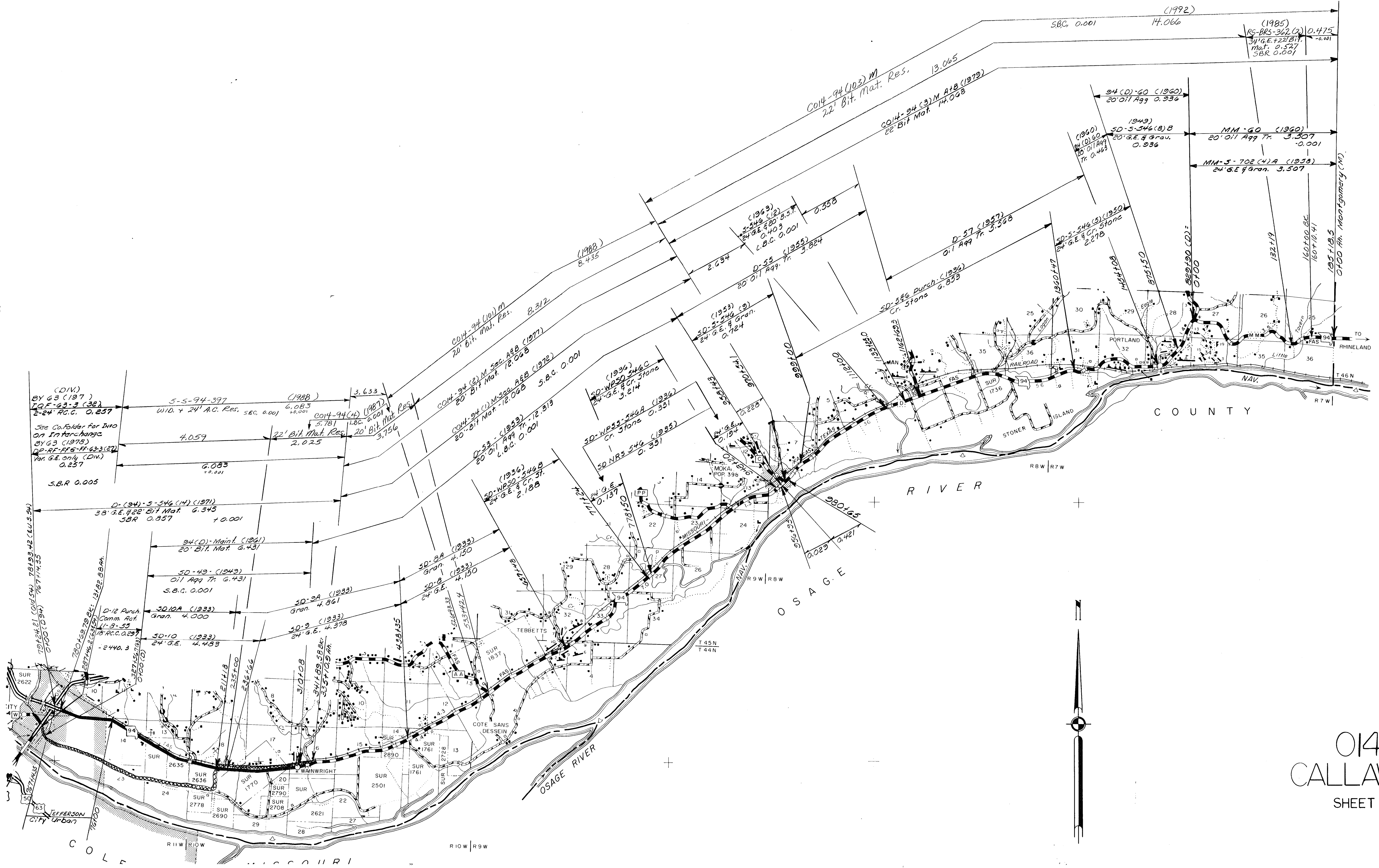
014
CALLAWAY CO.
SHEET 4 OF 17



ROUTE 1-70

014
CALLAWAY CO.
SHEET 5 OF 17

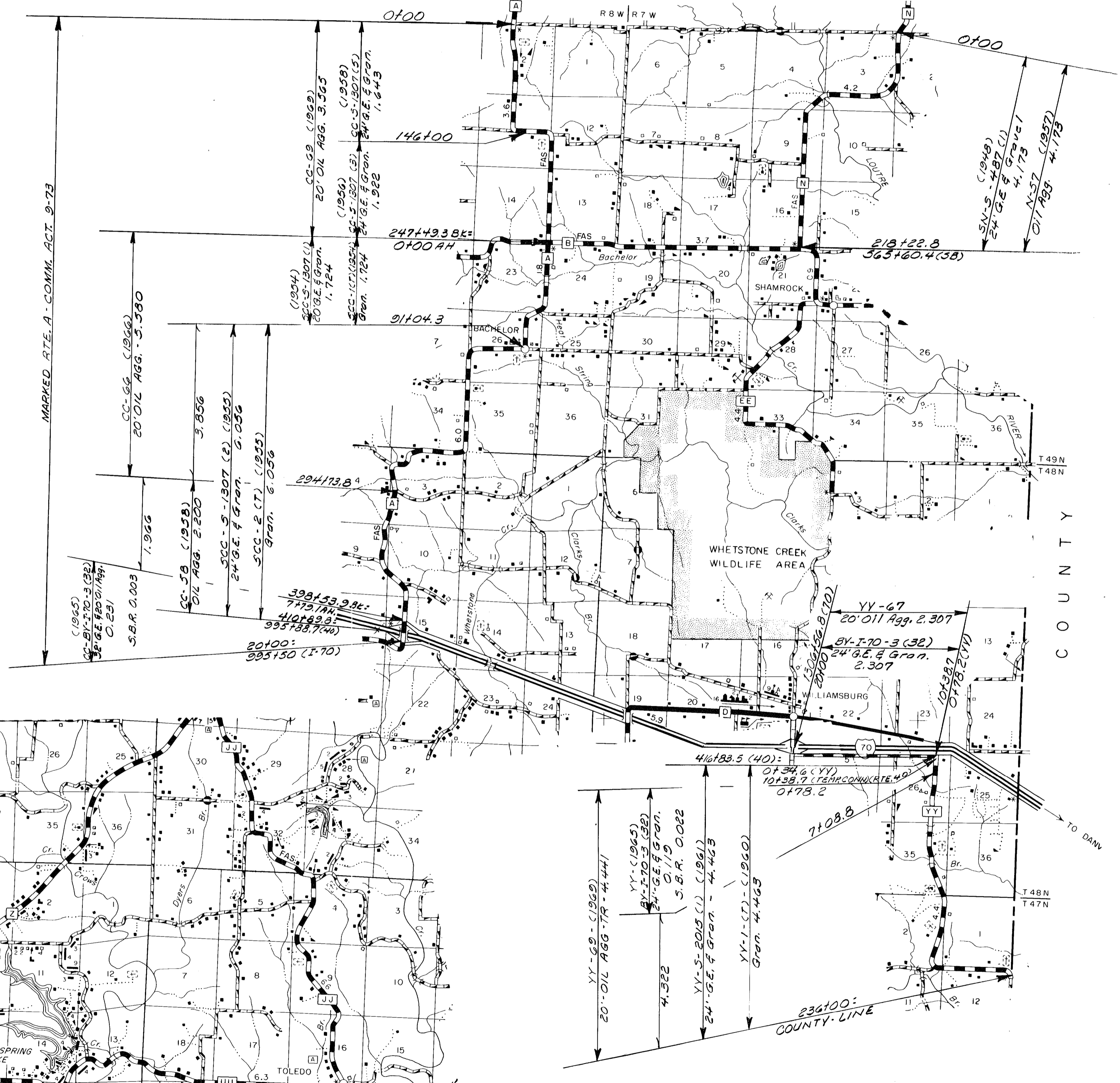
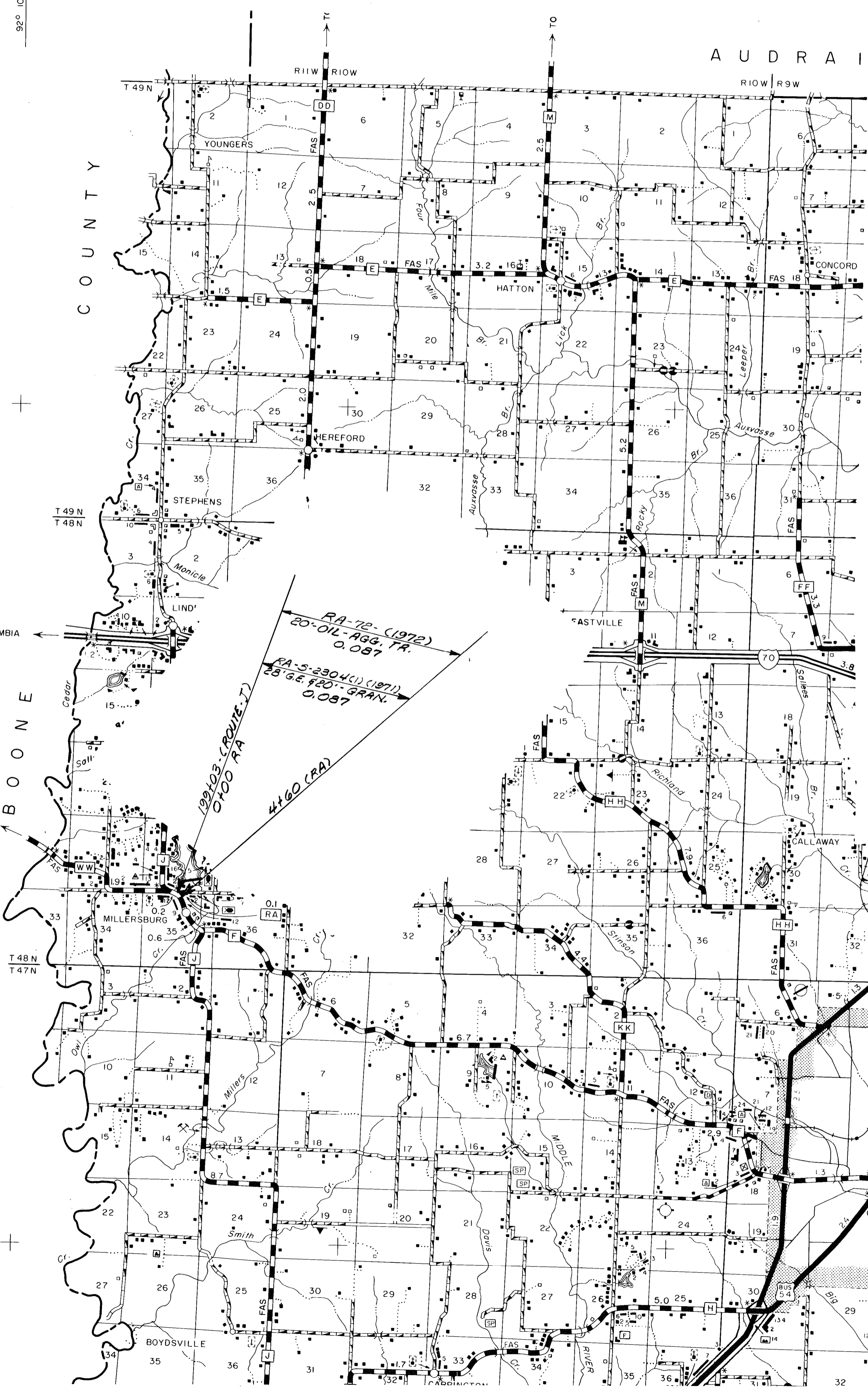
O M E I



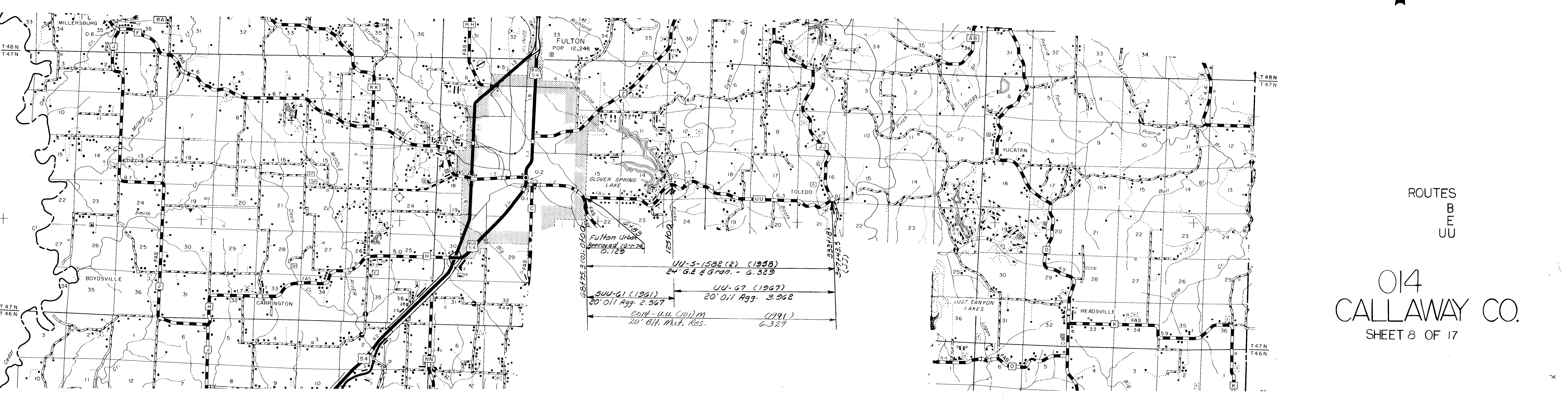
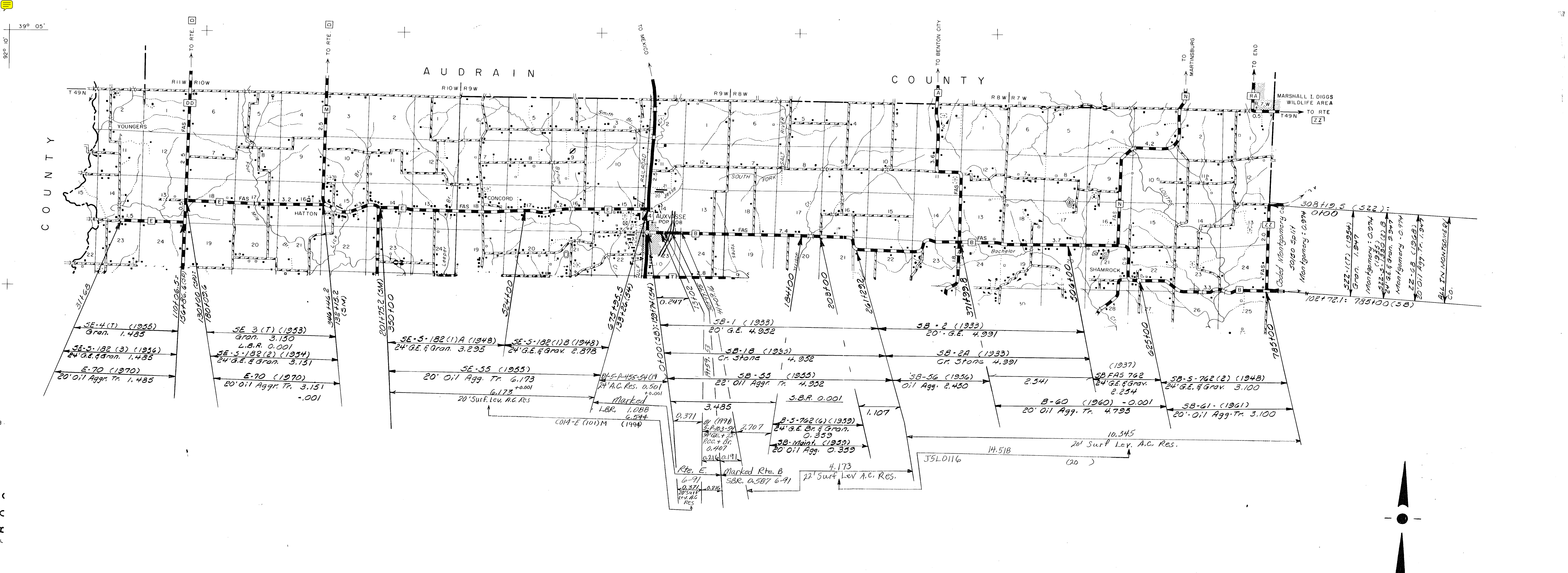
ROUTE 94

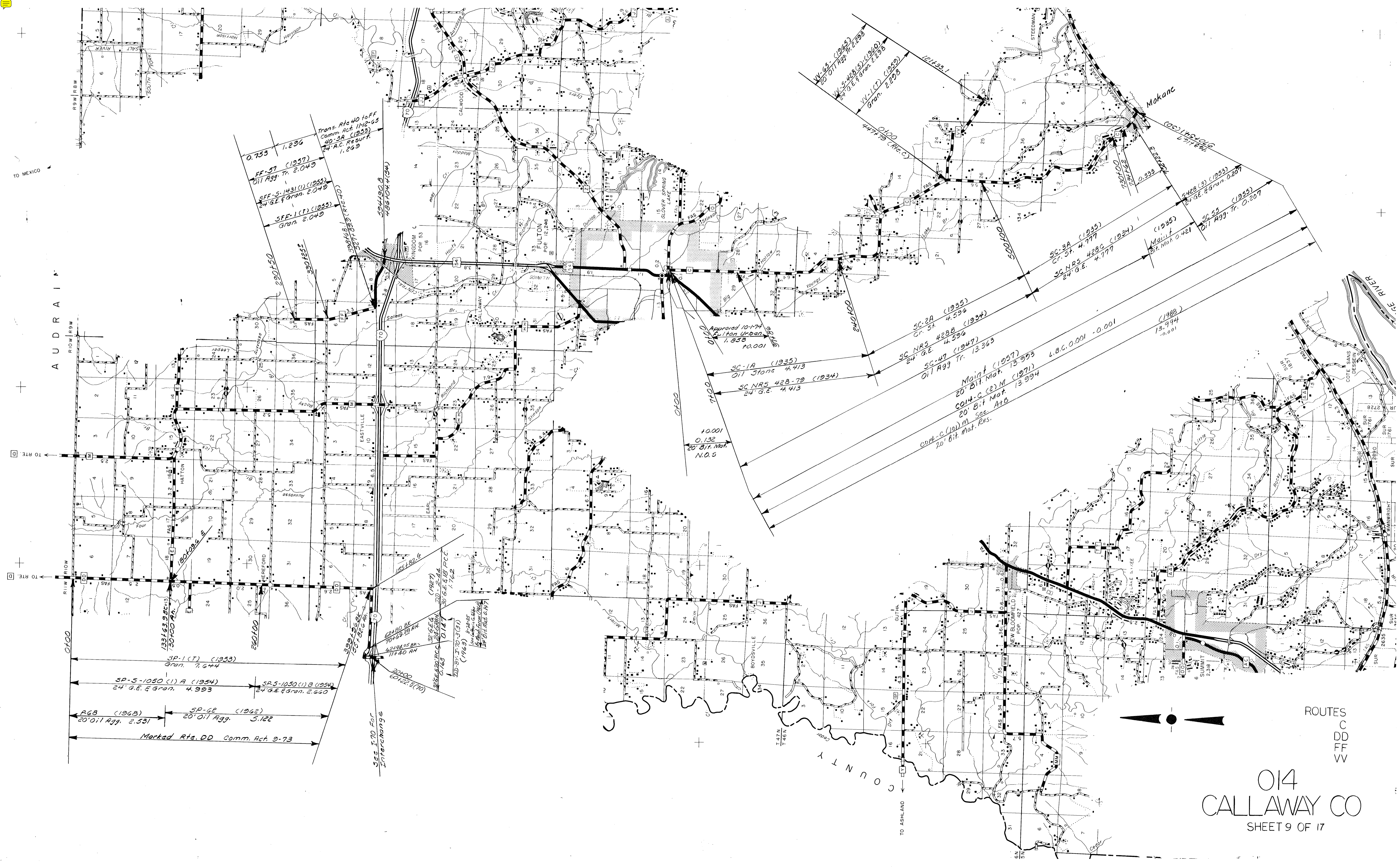
014
 CALLAWAY CO.
 SHEET 6 OF 17

92° 10'



ROUTES
A
N
R
A
Y
Y





AUDRAIN

CALLAWAY COUNTY

014
CALLAWAY CO
SHEET 9 OF 17

ROUTES
C
DD
FF
VV

Trans. Rte 40 to FF
Comm. Act 1112-03
40-3A (1953)
24" G.E. Resurf.
1.269

FF-57 (1957)
Oil Agg. Tr. 2.049

SFF-S-1431(1) (1955)
24" G.E. Gran. 2.049

SFF-1(T) (1955)
Gran. 2.049

W-64 (1965)
20' Oil Agg. Tr. 2.298

W-5422(3) (1960)
24" G.E. Gran. 2.298

W-1(T) (1959)
Gran. 2.298

SC-3A (1935)
Cr. St. 4.777

SC NRS 428C (1934)
24" G.E. 4.777

SC-2A (1935)
Cr. St. 4.596

SC NRS 428B (1934)
24" G.E. 4.596

SC-47 (1947)
Oil Agg. Tr. 13.363

Maint (1957)
20' Bit. Mat. 13.993

CO14-C (2) M (1971)
20' Bit Mat. 13.994

CO14-C (10) M Sec. A1b
20' Bit. Mat. Res.

Approved 10-17-74
Oil Stone Urban
11.853
10.001

SC-1A (1935)
Oil Stone 4.413

SC NRS 428-70 (1934)
24" G.E. 4.413

10.001
0.132
20' Bit. Mat.
N.O.S

SP-1(T) (1953)
Gran. 7.644

SP-S-1050(1) A (1954)
24" G.E. Gran. 4.993

SP-S-1050(1) B (1954)
24" G.E. Gran. 2.660

PGB (1968)
20' Oil Agg. 2.531

SP-6B (1962)
20' Oil Agg. 5.122

Marked Rte. DD Comm. Act. 9-73

20' Oil Agg. (1970)
60122-3(70)

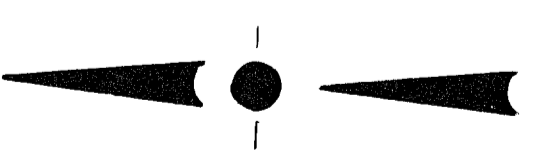
20' Oil Agg. (1963)
11440 AH

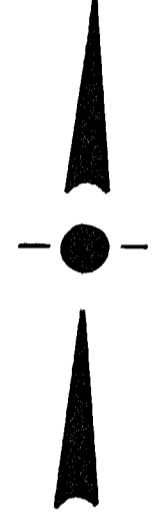
20' Oil Agg. (1963)
11440 AH

20' Oil Agg. (1963)
11440 AH

20' Oil Agg. (1963)
11440 AH

See I-70 For
Interchange

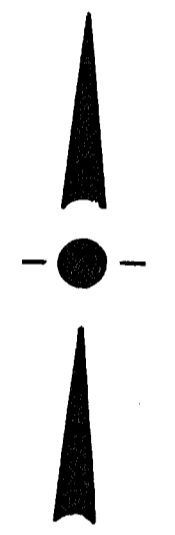
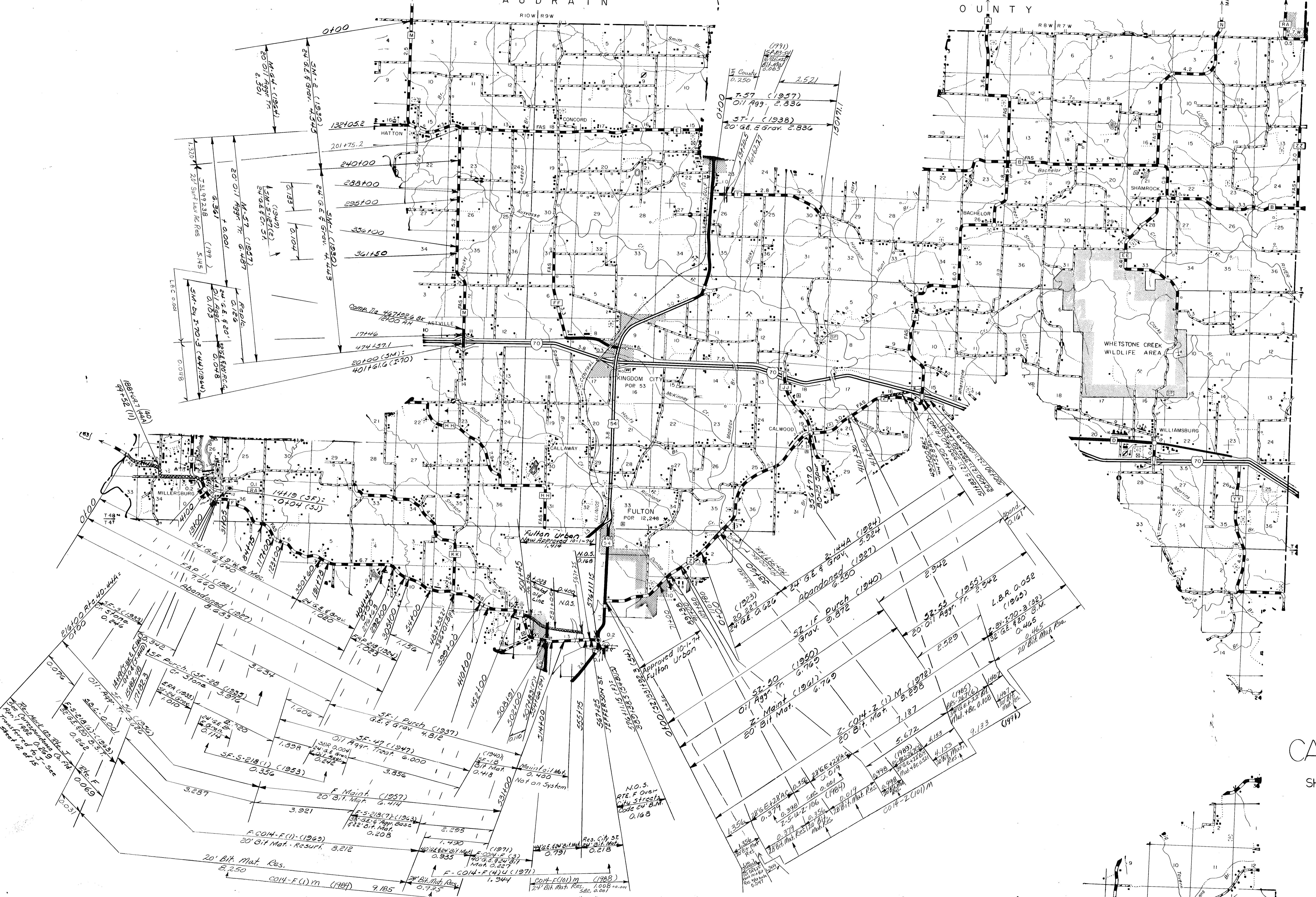




ROUTES
D
HH
NN

014
CALLAWAY CO
SHEET 10 NO 17

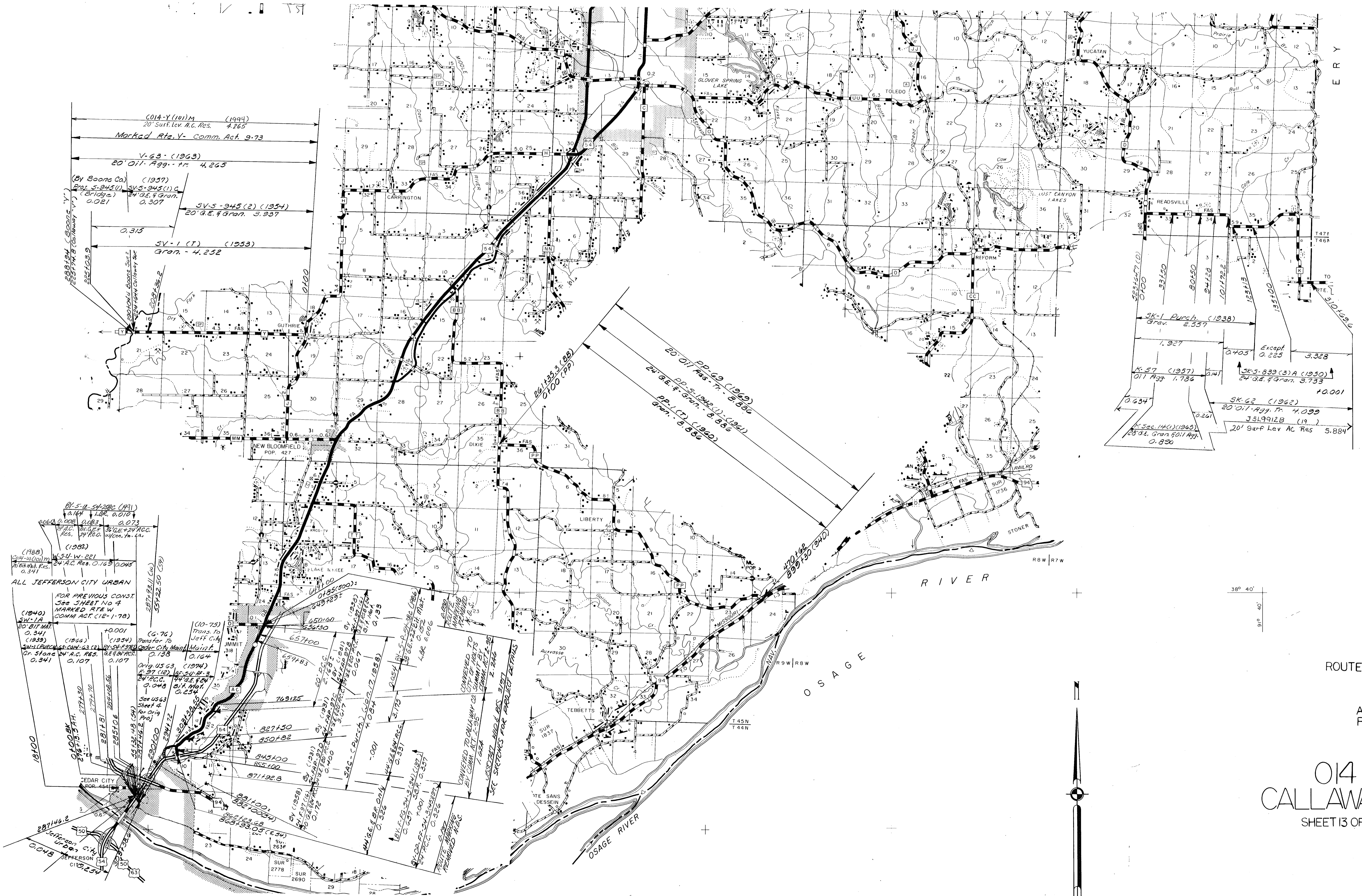
C O U N T Y

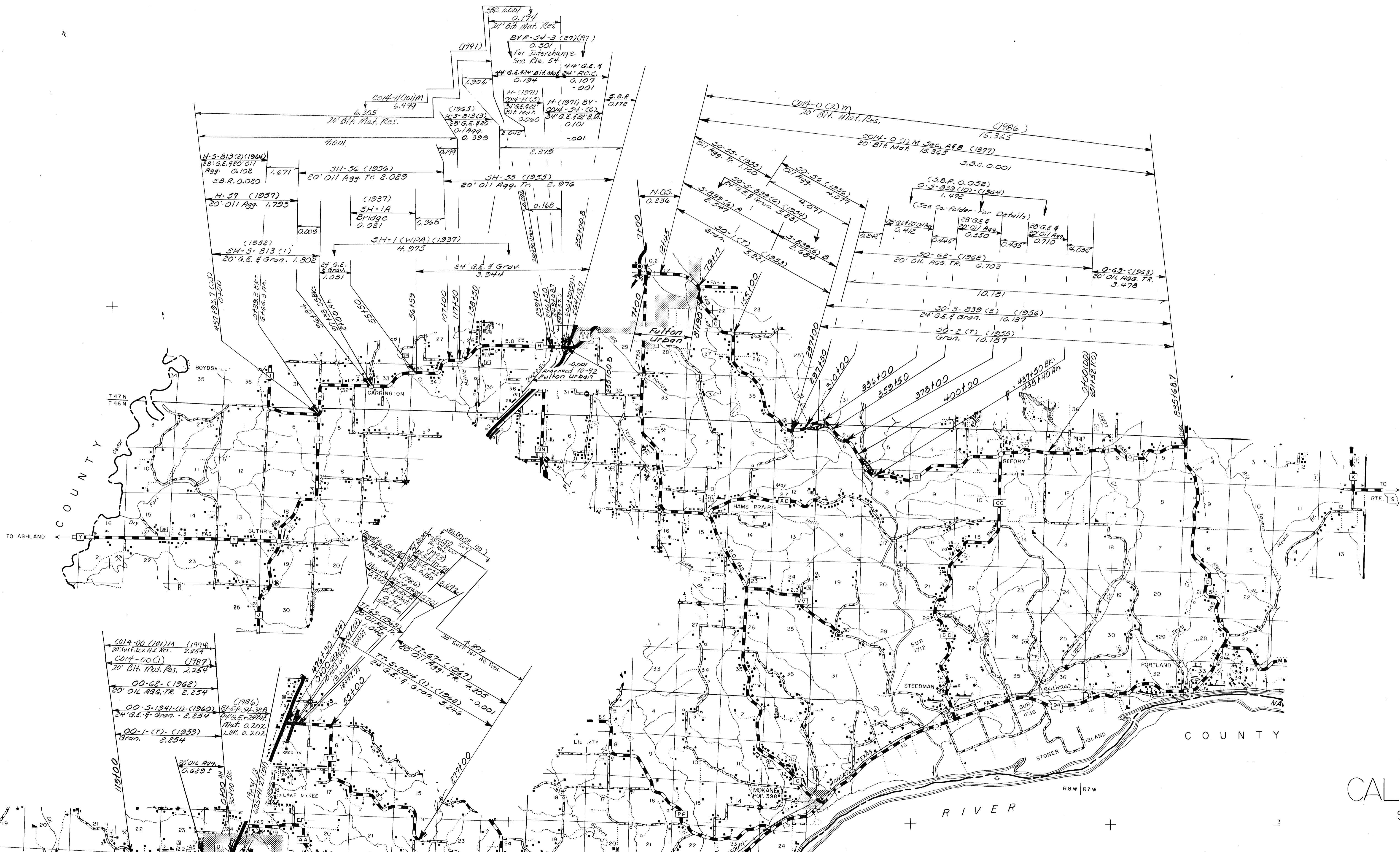


ROUTES
 F History
 M T
 Z

014 CALLAWAY

SHEET 11 OF 17





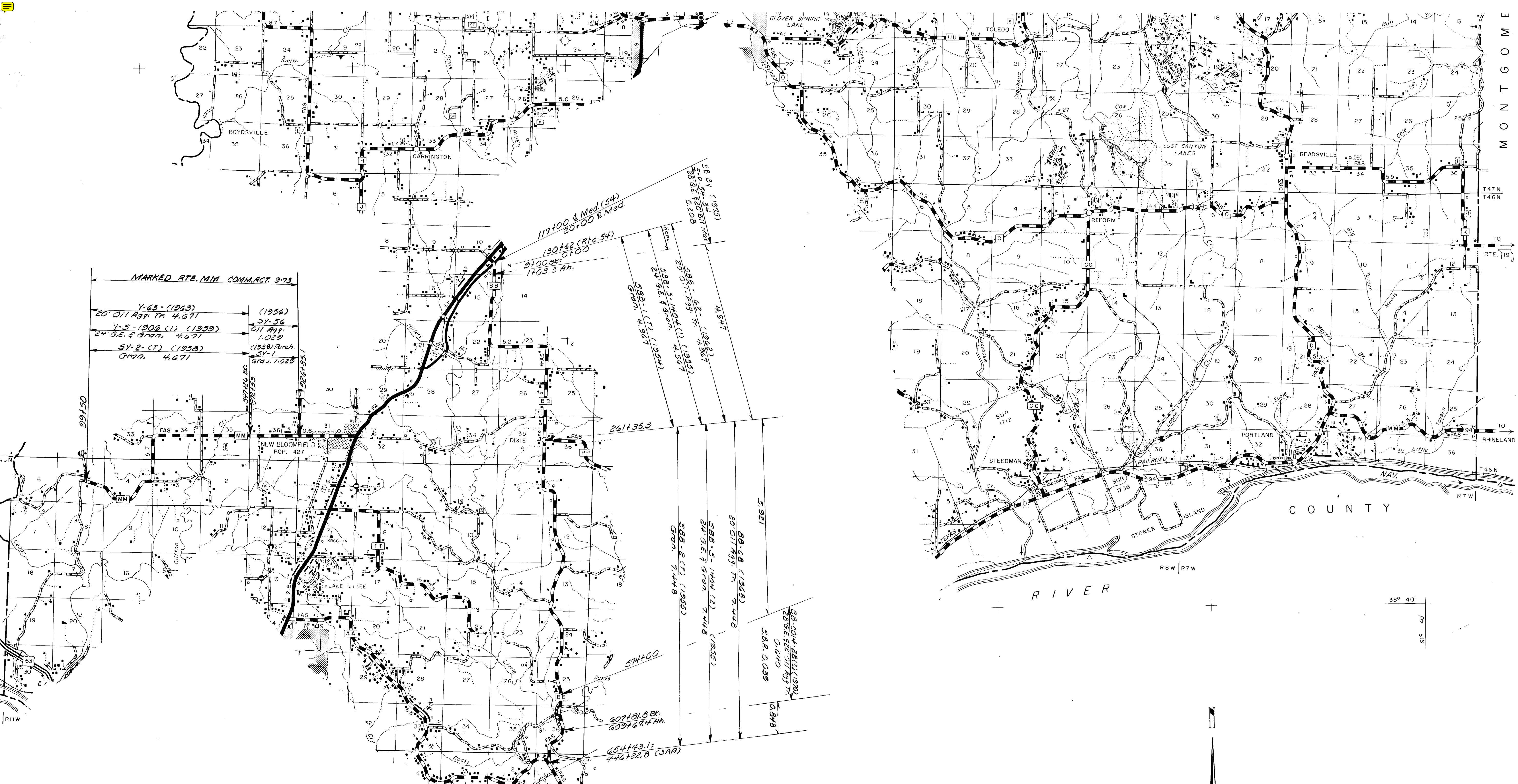
COUNTY

COUNTY

ROUTES
O
H
OO
TT

014
CALLAWAY CO.
SHEET 14 OF 17

RIVER



MARKED RTE. MM. COMM. ACT. 3-73

Y-63 (1963)
 20' Oil App. Tr. 4.671
 Y-5-1906 (1) (1959)
 24' G.E. & Grdn. 4.671
 SY-2 (T) (1955)
 Grdn. 4.671

(1956)
 3Y-56
 Oil App.
 1.029
 (1938) Arch.
 SY-1
 Grdn. 1.029

117+00 & Med. (54)
 20+00 & Med.
 130+62 (Rt. 54)
 20+00
 27+00 Bk. 0+00
 1403.3 Ah.

588-82 (1952)
 20' Oil App. Tr. 4.967
 588-5-1404 (1) (1955)
 24' G.E. & Grdn. 4.967
 588-17 (1954)
 Grdn. 4.967

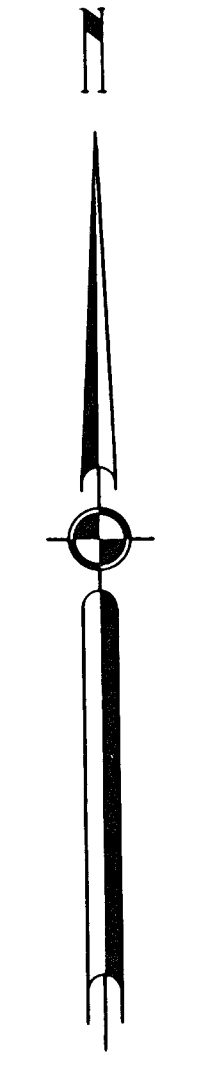
261+35.3

588-82 (1955)
 20' Oil App. Tr. 7.448
 588-5-1404 (2) (1955)
 24' G.E. & Grdn. 7.448
 588-2 (T) (1955)
 Grdn. 7.448

58-004-881 (1980)
 23' G.E. & Grdn. 0+00
 0+00
 58-0-039

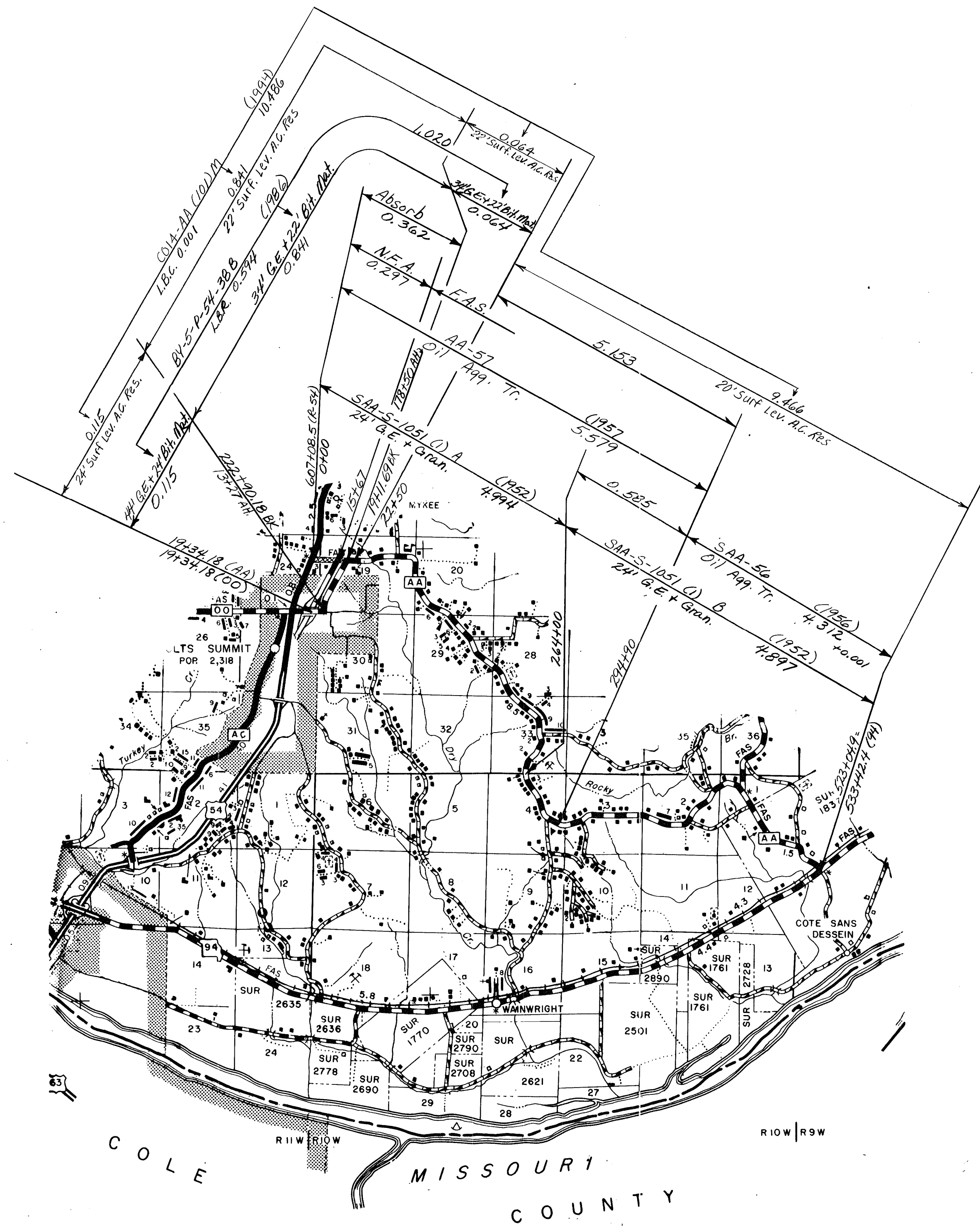
574+00
 607+81.8 Bk.
 609+67.4 Ah.
 654+43.1:
 446+22.8 (3AA)

38° 40'



ROUTES

BB
MM



ROUTES
AA

014
CALLAWAY CO.
SHEET 16 OF 17

39° 05'
92° 10'

TO BENTON CITY
U N T Y

TO MARTINSBURG

TO END

MARSHALL I. DIGGS
WILDLIFE AREA

TO RTE. 149 N
ZZ

TO WELLSVILLE

TO MONTGOMERY CITY

C O U N T Y

TO DANVILLE

ROUTES
F

014
CALLAWAY

⑤ SHEET 17 OF 17

