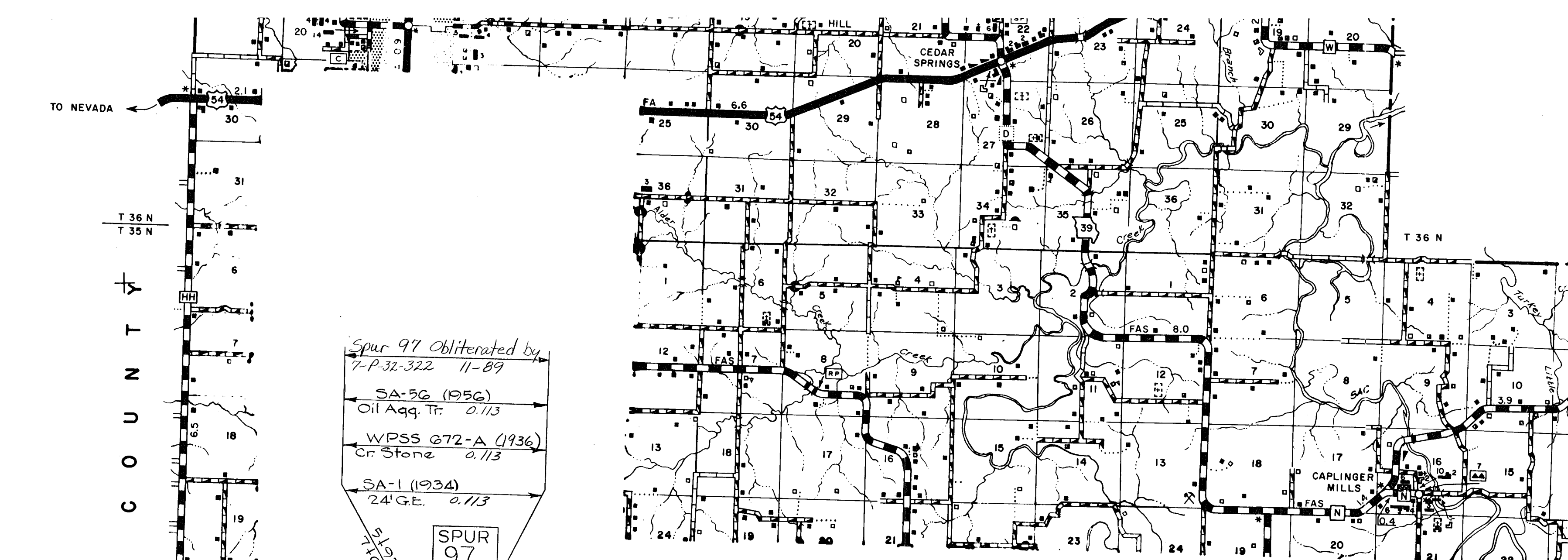
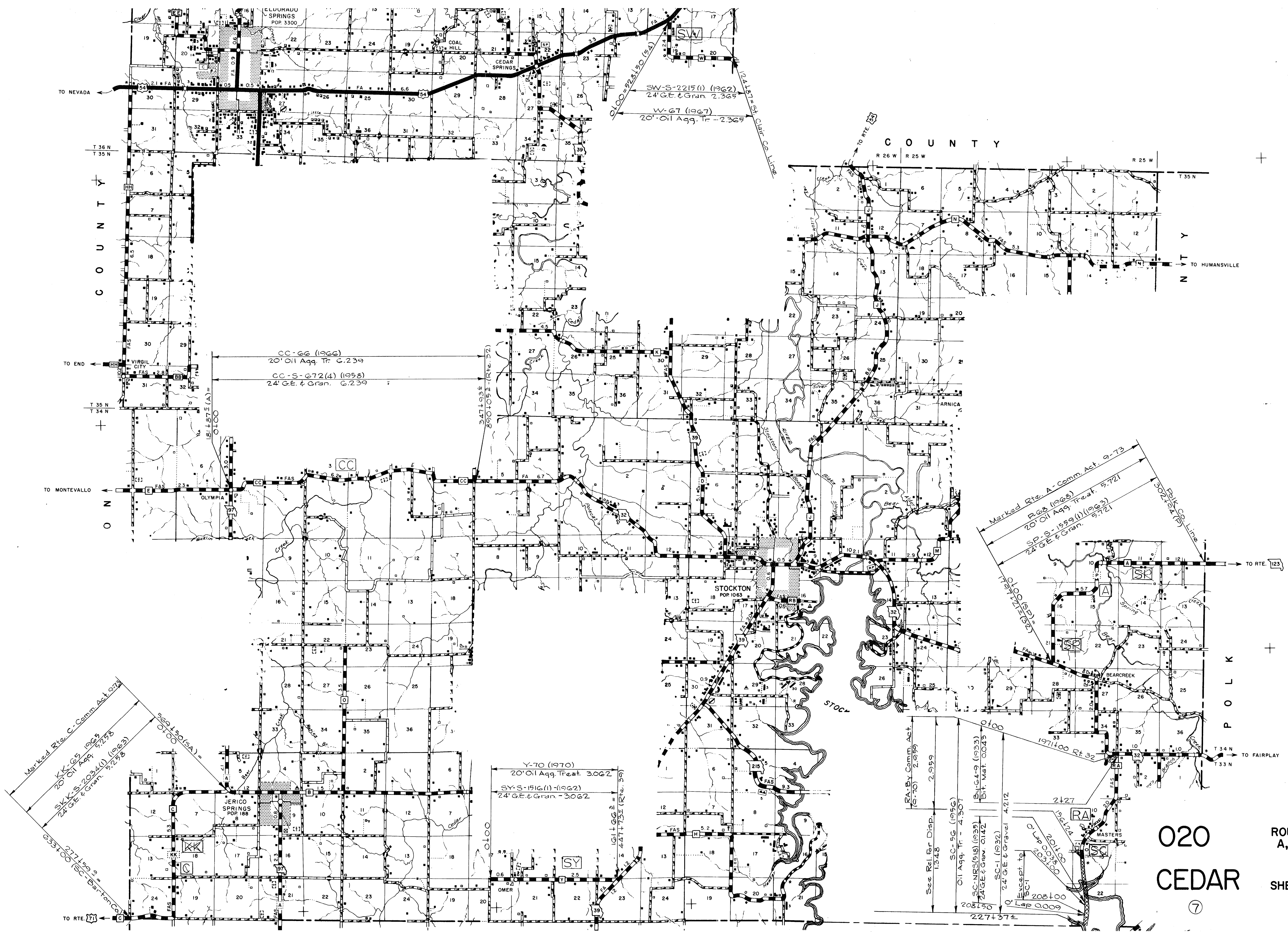




020
CEDAR
⑦

ROUTE 39
SHEET 3 OF 10



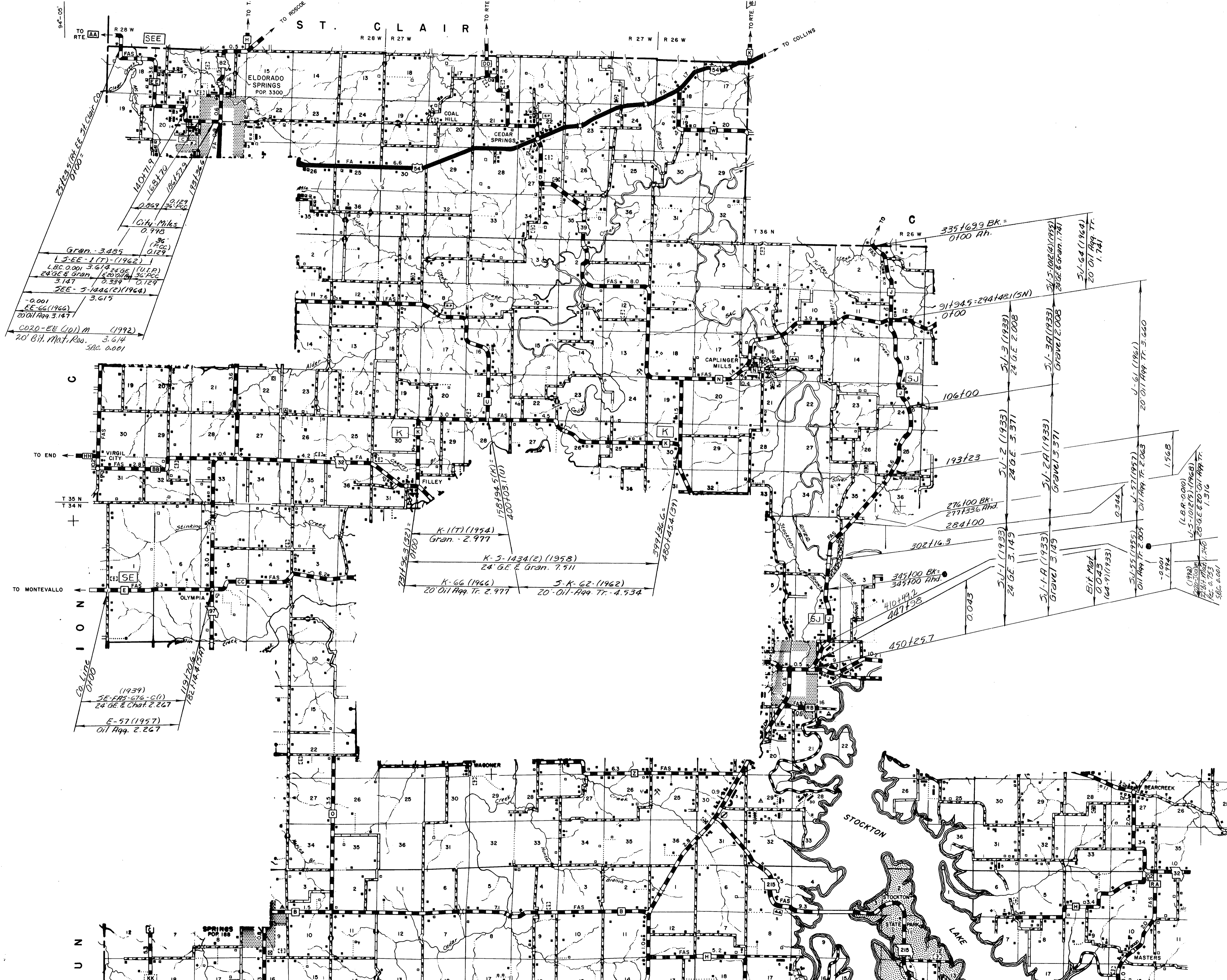


020
CEDAR

7

ROUTES:
A,C,W,Y,CC,RA(C)

SHEET 7 OF 10



Gran. 3.485
 L-3-EE-1(T) (1962)
 L.B.C. 0.001 3.614 (1966) (U.T.P.)
 24 GE & Chat 2.267
 3.147 0.334 0.129
 SEE-5-1444(2) (1964)
 3.615
 -0.001
 EE-66 (1966)
 20 01 App. Tr. 3.147
 CD20-EE (10) M (1992)
 20' Bit. Mat. Res. 3.614
 SAC. 0.001

(1939)
 SE-FAS-676-C(1)
 24 GE & Chat 2.267
 E-57 (1957)
 Oil App. Tr. 2.267

K-1(T) (1954)
 Gran. 2.977
 K-5-1434(2) (1958)
 24 GE & Gran. 7.511
 K-66 (1966)
 20 01 App. Tr. 2.977
 S-K-62 (1962)
 20 01 App. Tr. 4.534

3351639 BK =
 0100 Ah.

917945-294148 (SN)
 0100

106100

193123

276100 BK =
 2771336 Ahd.
 284100

302116.3

345100 BK =
 345100 Ahd.
 410+99.2
 447138

450125.7

0.043

0.344

315-102(4) (1955)
 24 GE & Gran. 1.741
 20 01 App. Tr. 1.741

24 GE 2.008
 24 GE 3.371

24 GE 3.371
 24 GE 3.371

24 GE 3.145
 24 GE 3.145

24 GE 3.145
 24 GE 3.145

24 GE 3.145
 24 GE 3.145

24 GE 3.145
 24 GE 3.145

24 GE 3.145
 24 GE 3.145

24 GE 3.145
 24 GE 3.145

24 GE 3.145
 24 GE 3.145

20 01 App. Tr. 1.741

20 01 App. Tr. 3.660

20 01 App. Tr. 2.063

1.568

1.994

1.994

1.994

1.994

1.994

1.994

020
 CEDAR
 ROUTES:
 E, J, K, EE
 SHEET 8 OF 10

