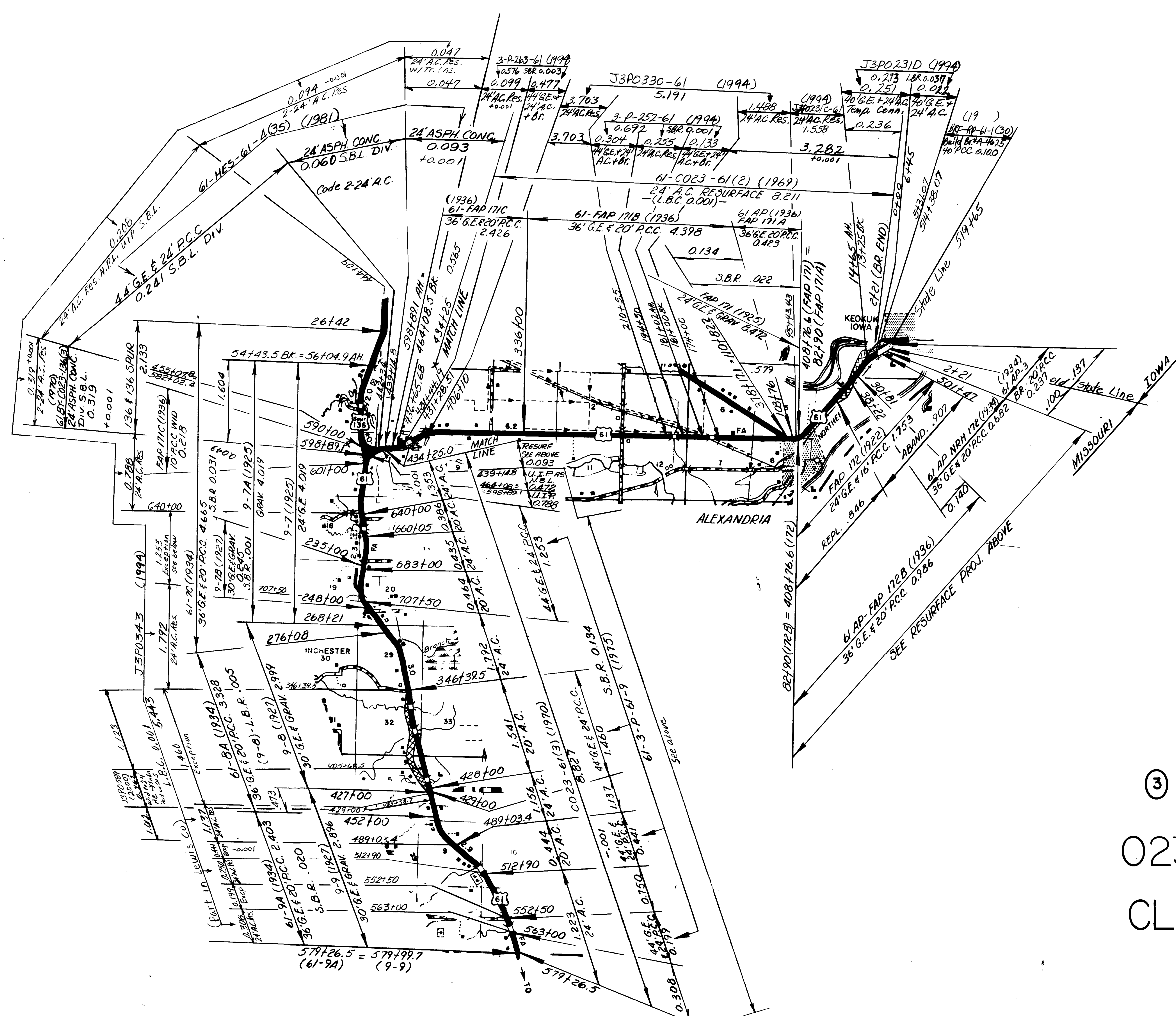


LEWIS

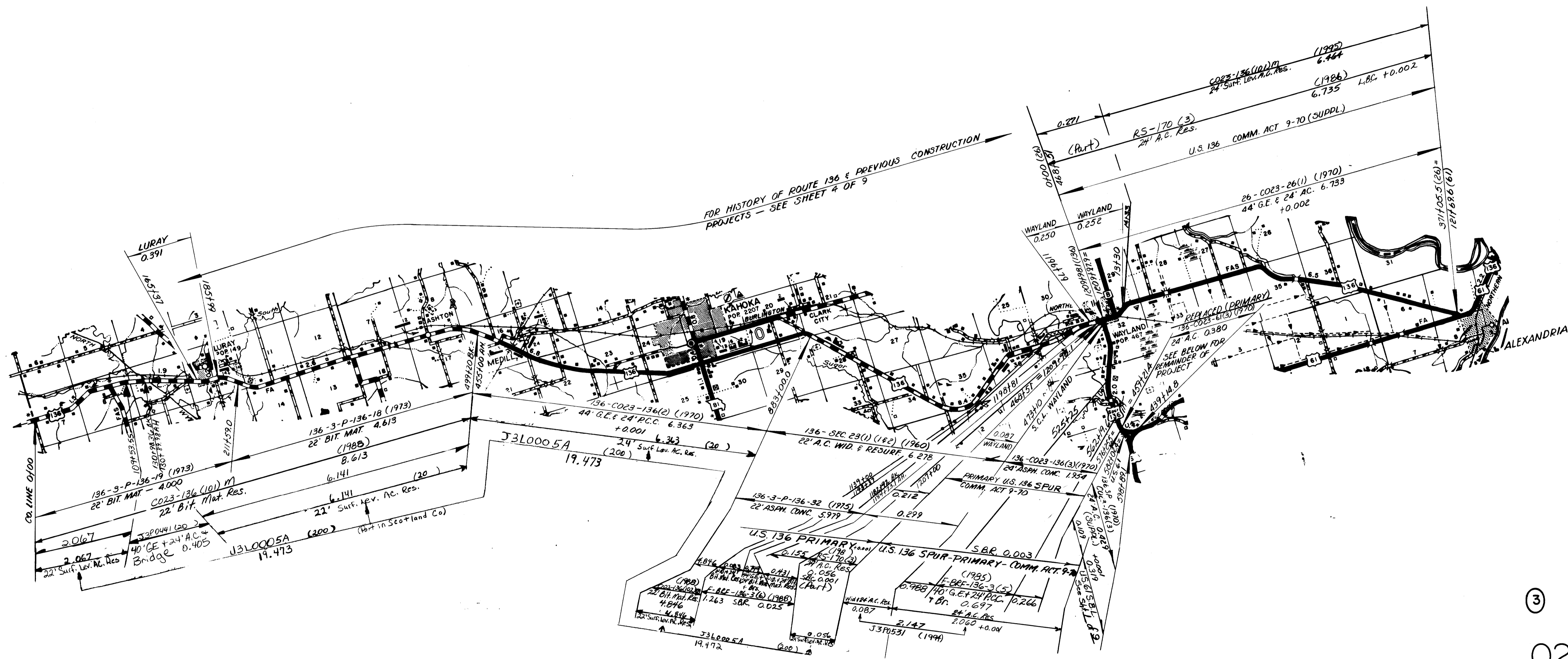
TO RTE 61



ROUTES 61
A
AA

③
023
CLARK

SHEET 1 OF 9



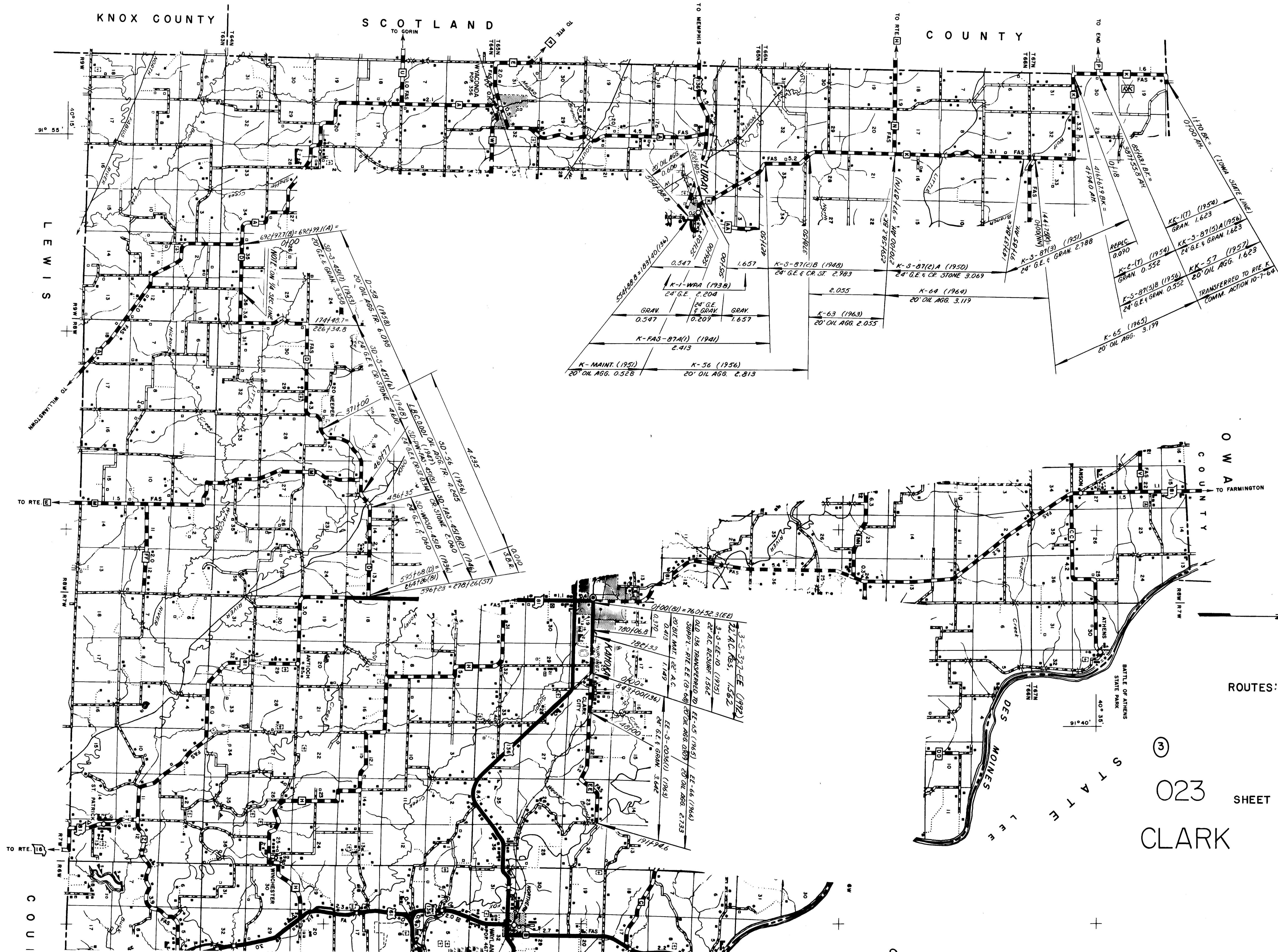
FOR HISTORY OF ROUTE 136 & PREVIOUS CONSTRUCTION
PROJECTS - SEE SHEET # OF 9

ROUTES: 136
136 SPUR

③

023 SHEET 3 OF 9

CLARK



ROUTES: D
EE
K

③
023
CLARK
SHEET 6 OF 9

KNOX COUNTY

SCOTLAND

COUNTY

LEWIS

OWSA COUNTY

COUNTY

BATTLE OF ATHENS STATE PARK

DES MOINES RIVER

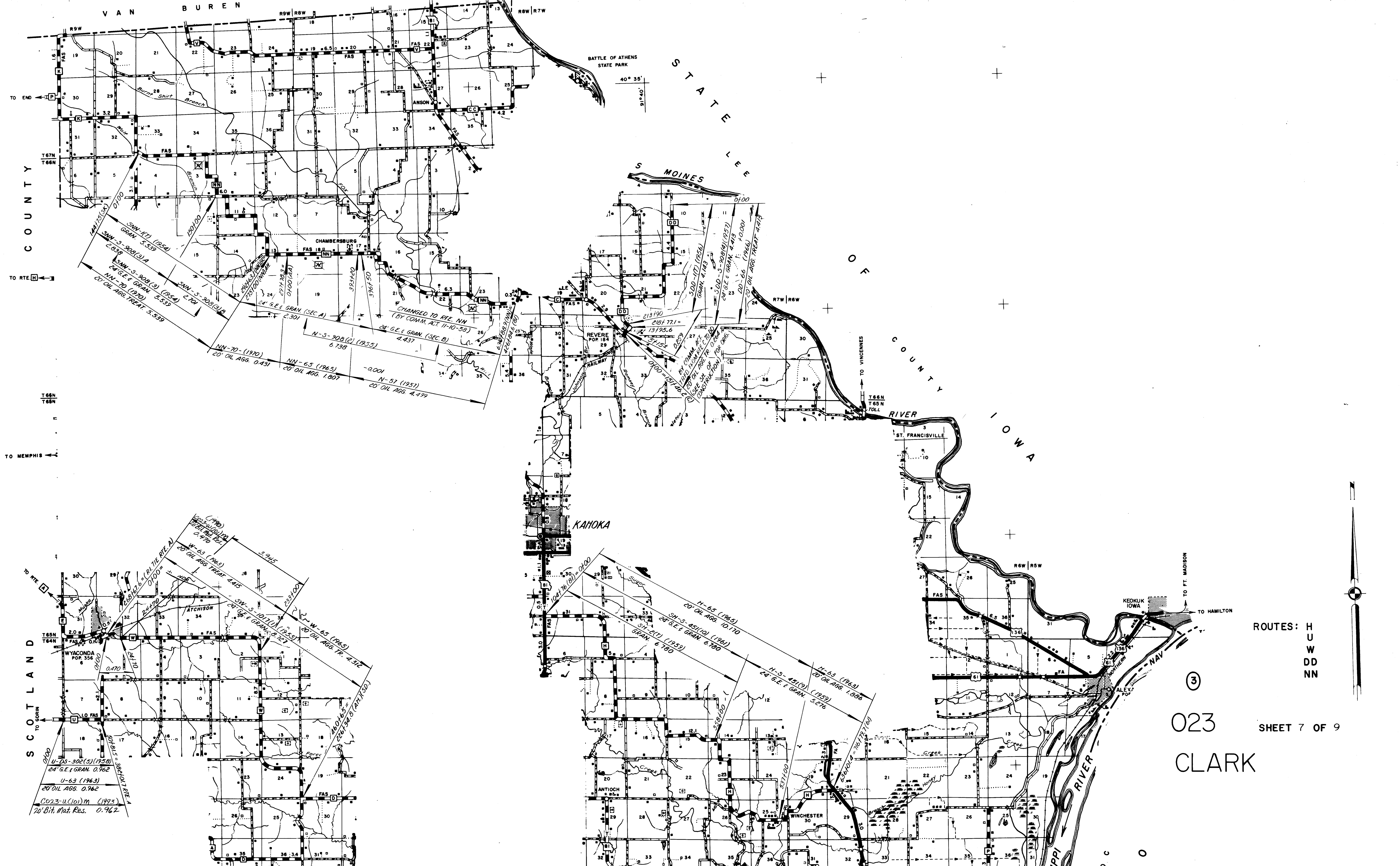
40° 35'

91° 00'

STATE

CLARK

SHEET 6 OF 9



VAN BUREN COUNTY

TO ENO ←

TO RTE 16 ←

TO MEMPHIS ←

BATTLE OF ATHENS STATE PARK

40° 35'

91° 40'

STATE LEAF

MOINES

RIVER

TO VINCENNES

TO FT. MADISON

TO HAMILTON

TO CORNH

TO FT. MADISON

SCOTLAND

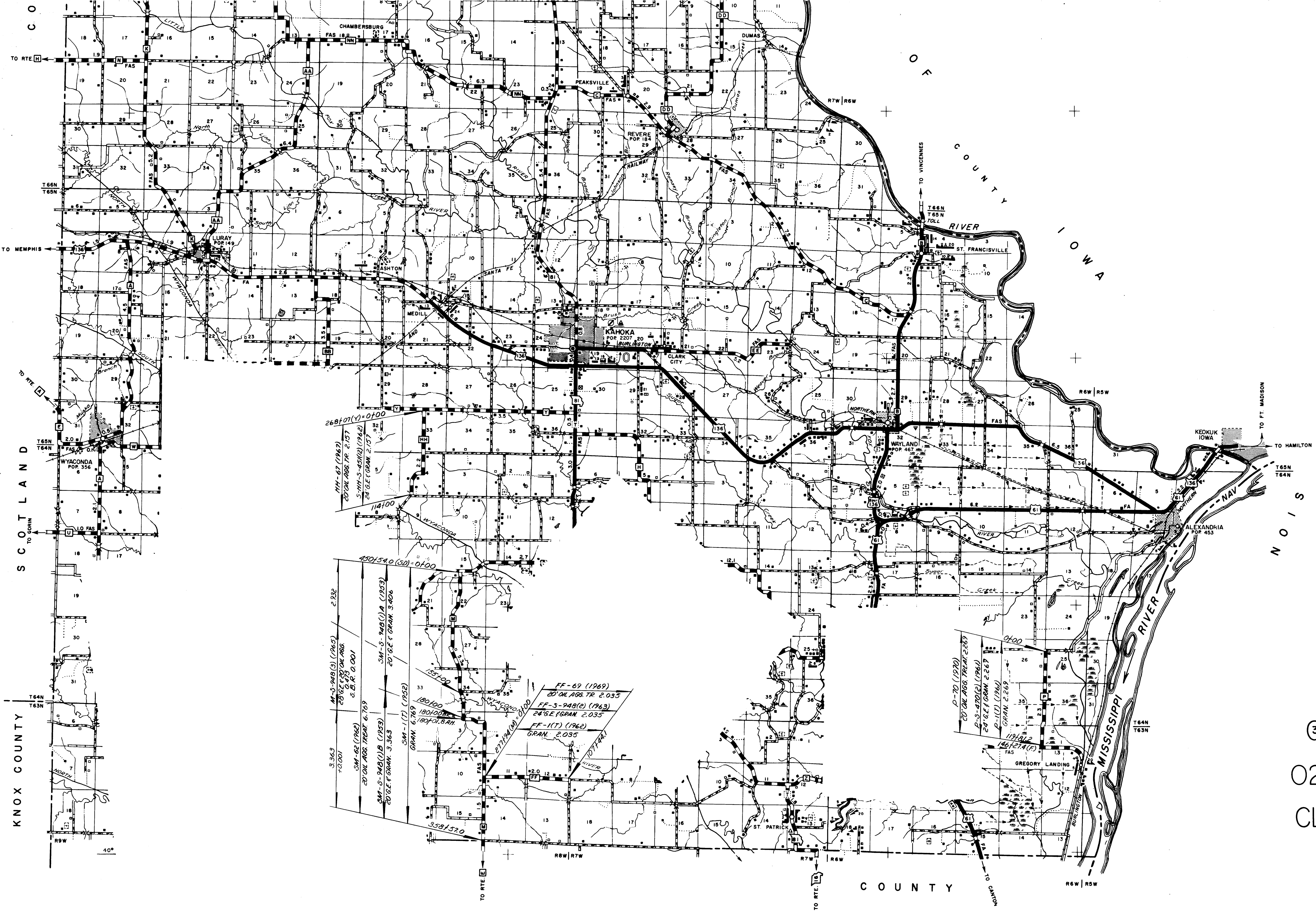
TO CORNH

ROUTES: H
U
W
DD
NN

023
CLARK

3

SHEET 7 OF 9

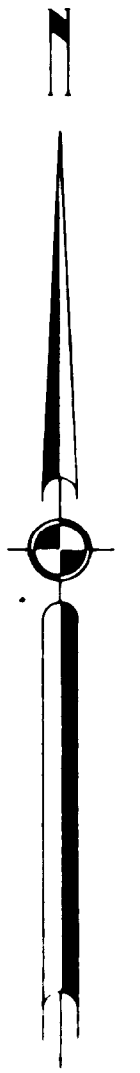


CO
 SCOTLAND
 KNOX COUNTY

COUNTY
 IOWA

NOIS

COUNTY



ROUTES M
 P
 FF
 HH

③
 023
 CLARK
 SHEET 8 OF 9

268107(Y)=0100
 114100
 4501540(SD)=0100
 3.363
 10.001
 M-S-948(3) (1965)
 20' OIL AGG. TR. 2.157
 S.E.R. 0.001
 SM-62 (1962)
 20' OIL AGG. TR. 6.769
 SM-S-948(1)A (1953)
 20' G.E.F. GRAN. 3.363
 SM-1(T) (1952)
 GRAN. 6.769
 180100
 180100
 180100
 180100
 271194(M)=0100
 FF-69 (1969)
 20' OIL AGG. TR. 2.035
 FF-S-948(2) (1963)
 24' G.E.F. GRAN. 2.035
 FF-1(T) (1962)
 GRAN. 2.035
 1071441
 3531570

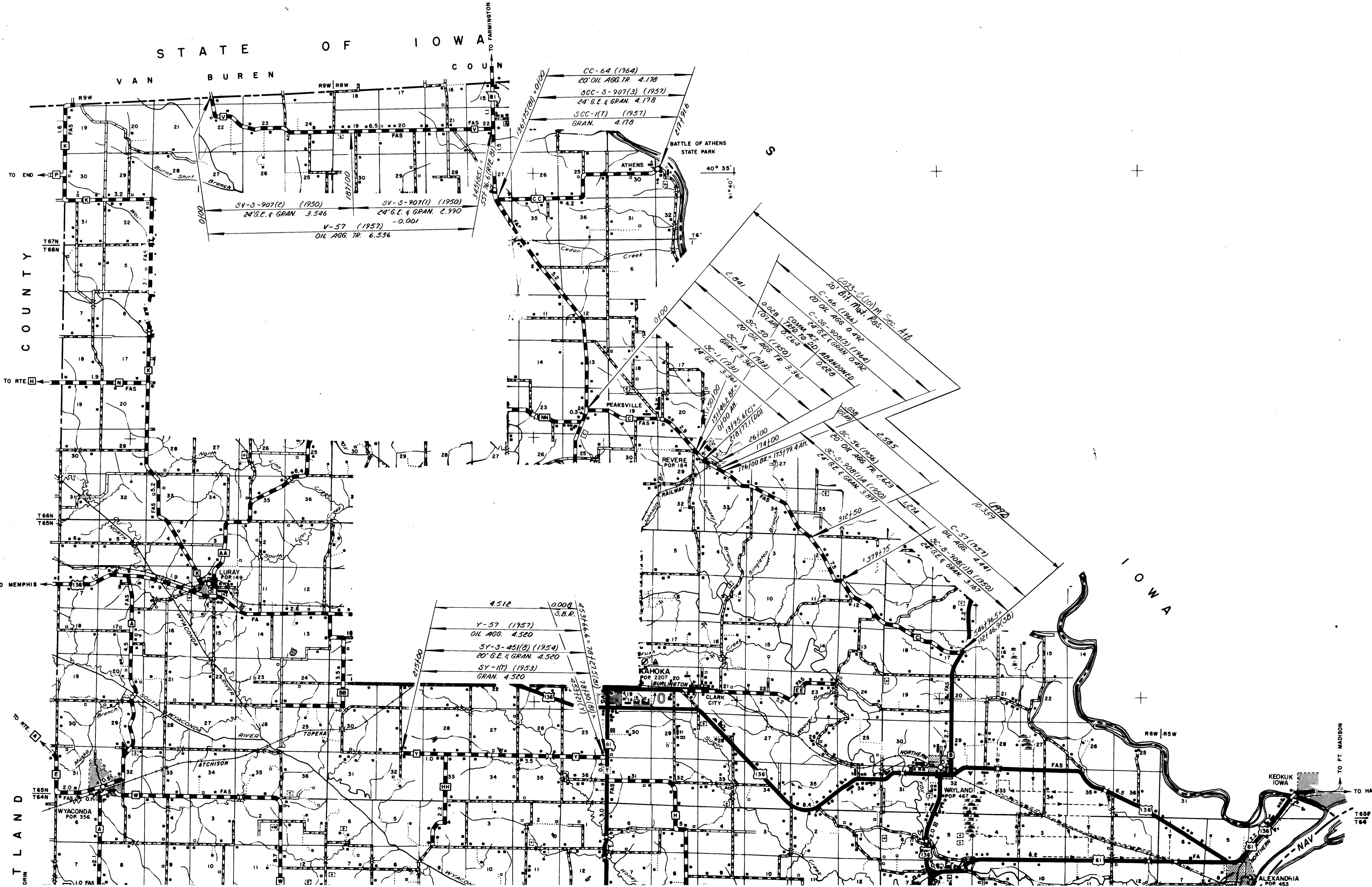
0100
 P-70 (1970)
 20' OIL AGG. TR. 2.269
 P-S-470(C) (1964)
 24' G.E.F. GRAN. 2.269
 P-1(C) (1964)
 GRAN. 2.269
 1191016
 1461274(E)
 FAS

T64N
T63N

R6W | R5W

10°

STATE OF IOWA



ROUTES
V
CC
C
Y

③
023 SHEET 9 OF 9

CLARK