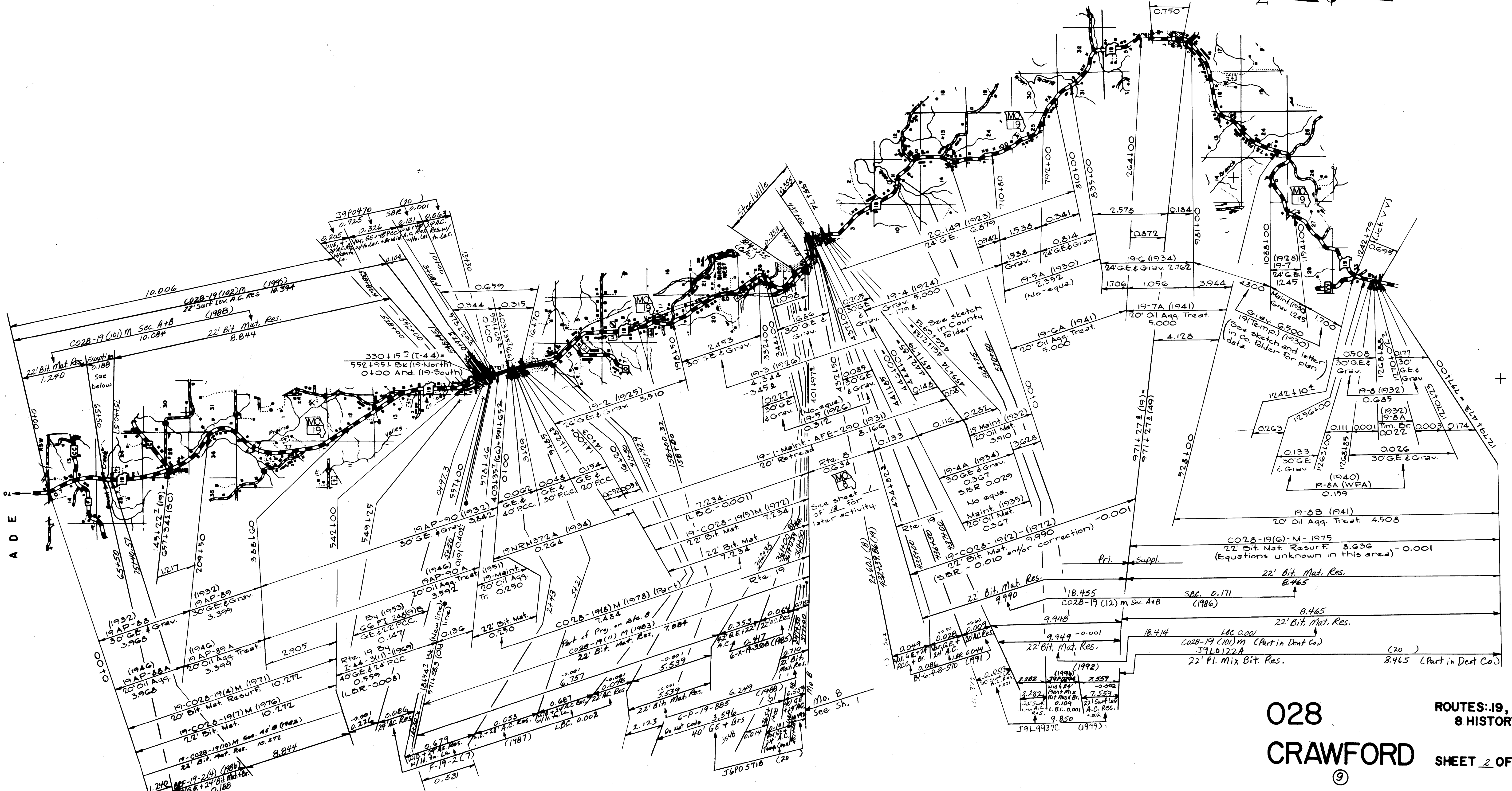


028  
CRAWFORD

ROUTE: 8 (A)  
SHEET 1 OF 13

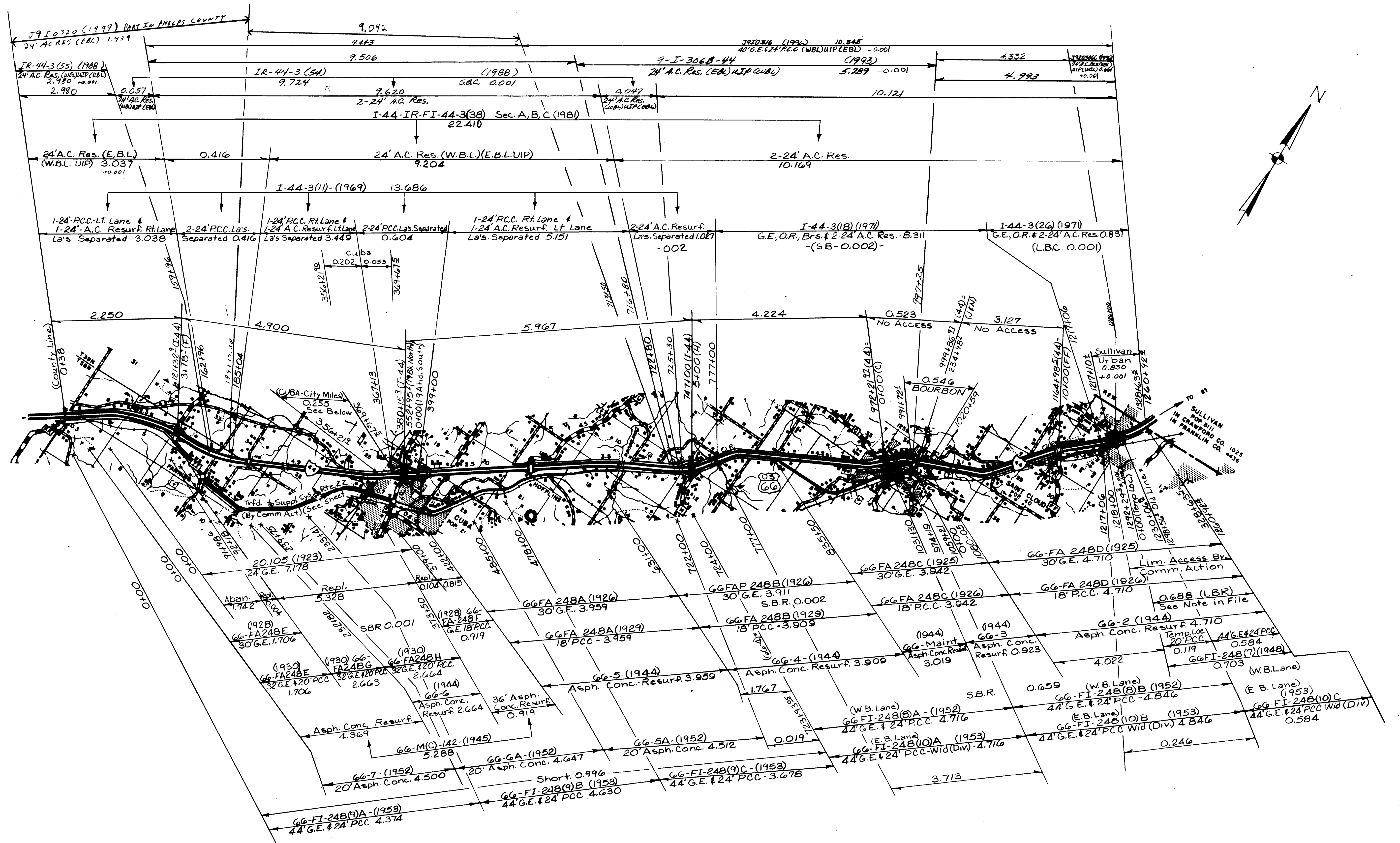


ADE

028  
CRAWFORD

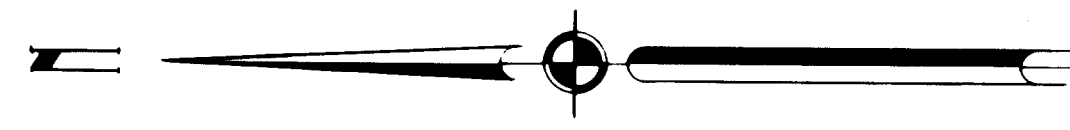
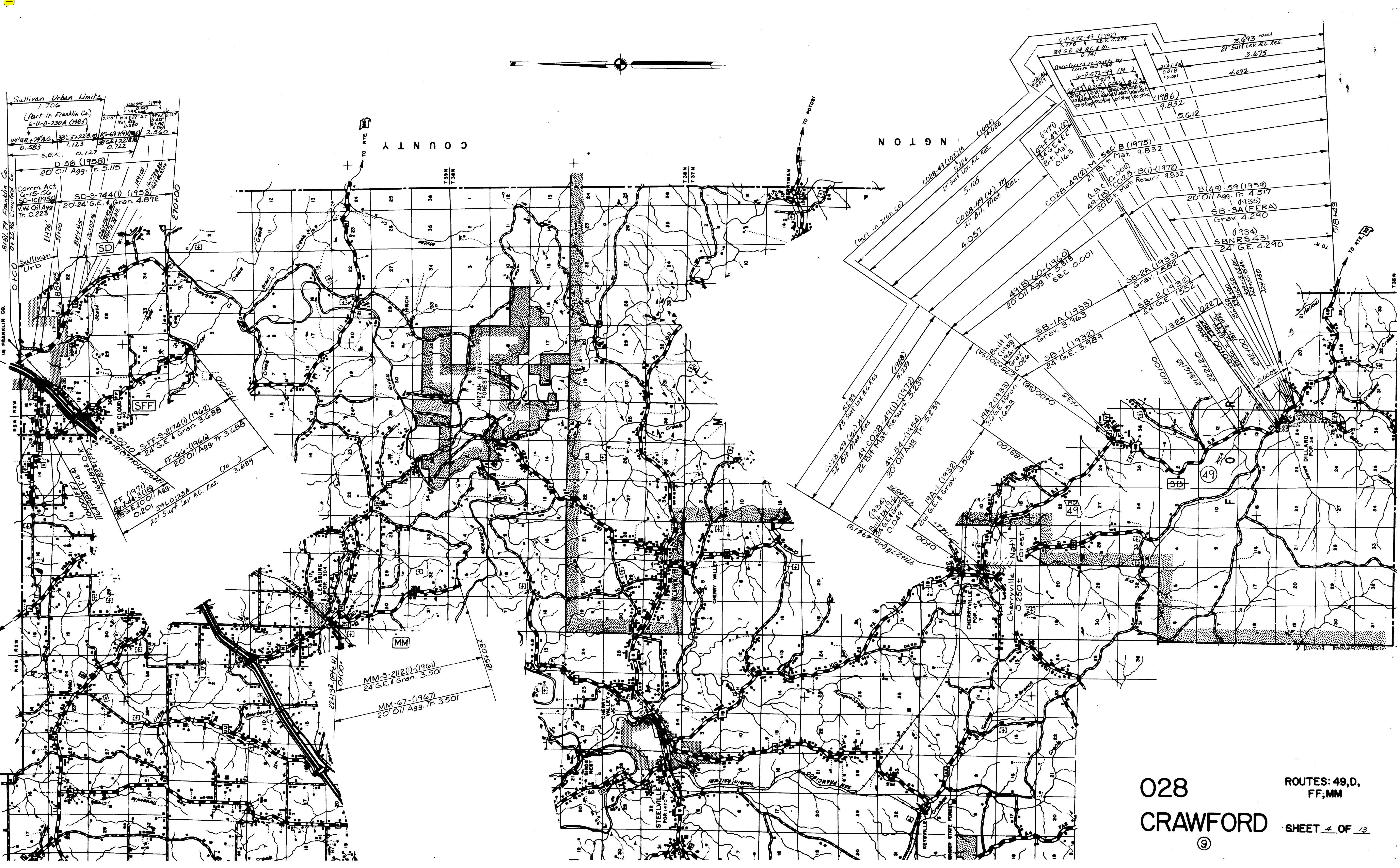
ROUTES: 19,  
8 HISTORY

SHEET 2 OF 13



028  
CRAWFORD

ROUTE: 44  
SHEET 3 OF 13



A I N N O C

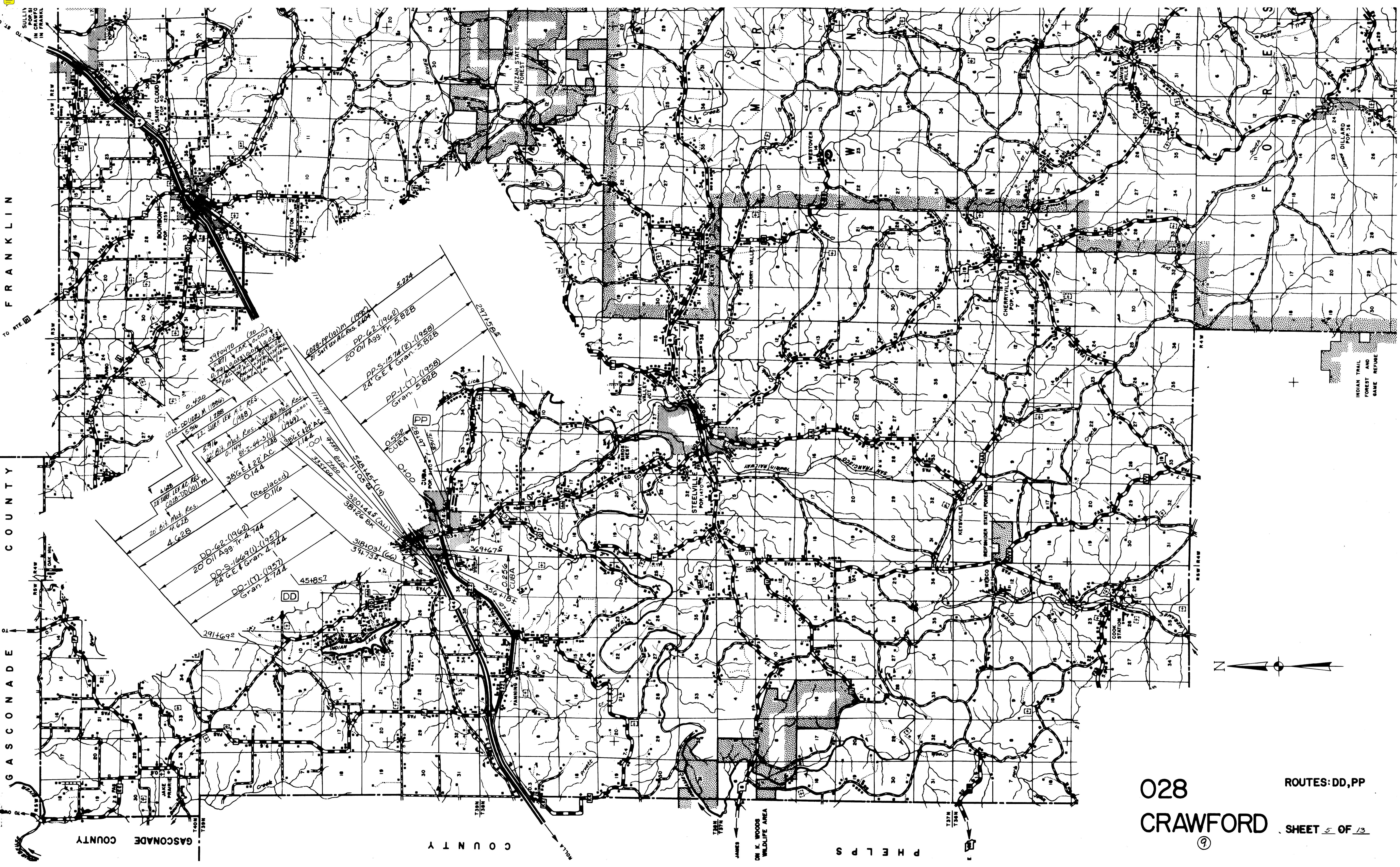
N O I S N

028  
CRAWFORD

ROUTES: 49, D,  
FF, MM

SHEET 4 OF 13





FRANKLIN

COUNTY

GASCONADE

GASCONADE COUNTY

COUNTY

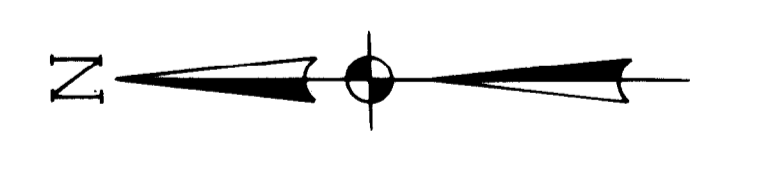
PHELPS

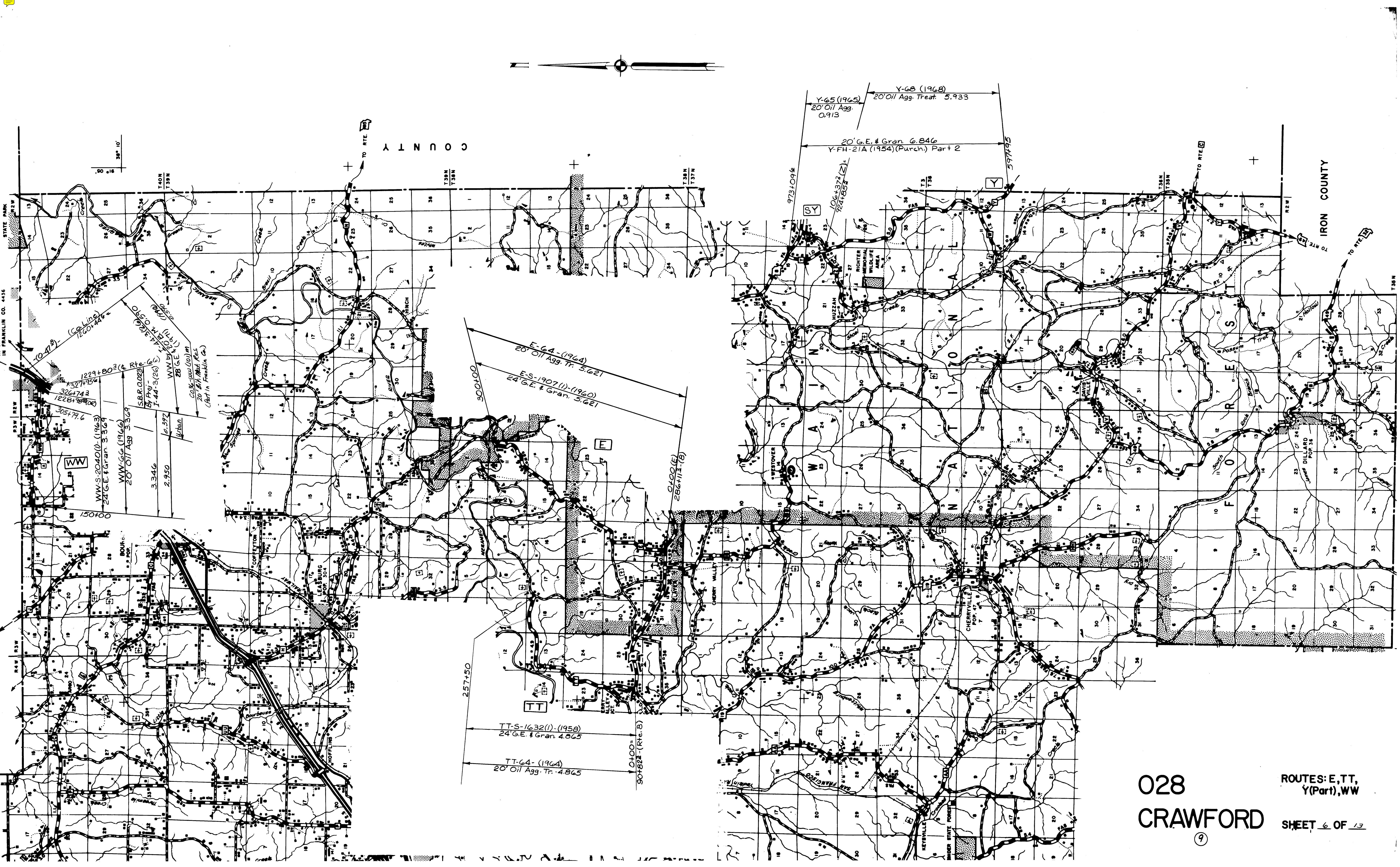
ROUTES: DD, PP

028  
CRAWFORD

SHEET 5 OF 13

9





FRANKLIN COUNTY

IRON COUNTY

028  
CRAWFORD  
9

ROUTES: E, TT,  
Y(Part), WW  
SHEET 6 OF 13

Y-65 (1965)  
20' Oil Agg.  
0.913

Y-68 (1968)  
20' Oil Agg. Treat. 5.933

20' G.E. & Gran. G. 846  
Y-FH-21A (1954) (Purch) Part 2

E-64-(1964)  
20' Oil Agg. Tr. 5.621

E-S-1907(I)-(1960)  
24' G.E. & Gran. 5.621

TT-S-1632(I)-(1958)  
24' G.E. & Gran. 4.065

TT-64-(1964)  
20' Oil Agg. Tr. 4.865

38° 10'

TAON  
133N  
133W

133N  
133W

133N  
133W

138N

138N

138N

STATE PARK

IN FRANKLIN CO. 4436

WW

E

TT

SY

Y

TO RTE 10

TO RTE 10

TO RTE 10

TO RTE 10

TO RTE 10

TO RTE 10

TO RTE 10

TO RTE 10

TO RTE 10

TO RTE 10

TO RTE 10

TO RTE 10

TO RTE 10

TO RTE 10

TO RTE 10

TO RTE 10

RAW RSW

RAW RSW

RAW RSW

RAW RSW

RAW RSW

RAW RSW

RAW RSW

RAW RSW

RAW RSW

RAW RSW

RAW RSW

RAW RSW

RAW RSW

RAW RSW

RAW RSW

RAW RSW

RAW RSW

RAW RSW

RAW RSW

RAW RSW

RAW RSW

RAW RSW

RAW RSW

RAW RSW

RAW RSW

RAW RSW

RAW RSW

RAW RSW

RAW RSW

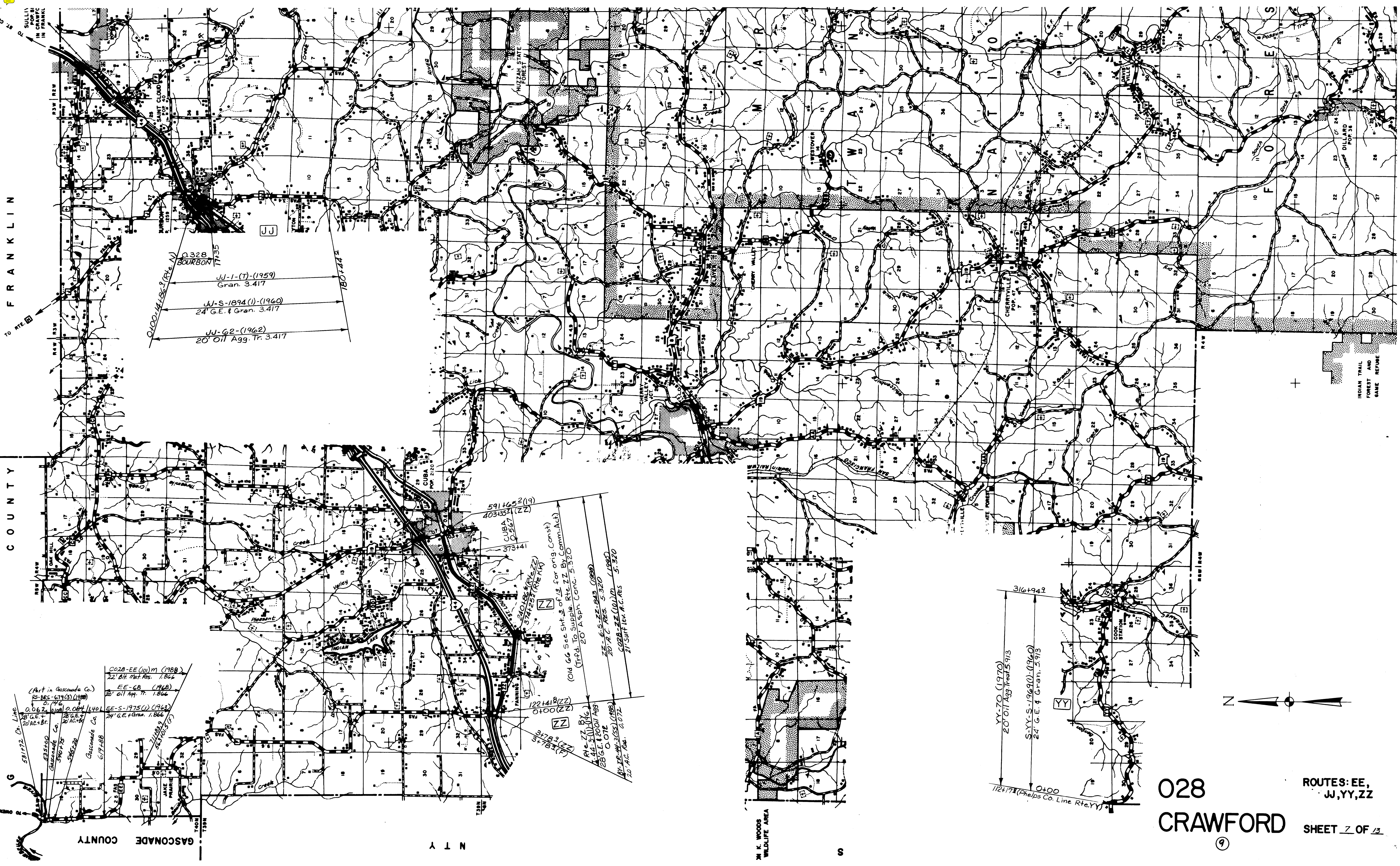
RAW RSW

RAW RSW

RAW RSW

RAW RSW

RAW RSW



FRANKLIN

COUNTY

G

Q328  
BOURBON  
1735

JJ-1-(T)-(1959)  
Gran. 3.417

JJ-S-1894(1)-(1960)  
24' G.E. & Gran. 3.417

JJ-G2-(1962)  
20' Oil Agg. Tr. 3.417

180744

5914652(19)  
4034351(22)  
CUBA  
POP. 2120  
0.567

20' A.C. RES. 5.320  
20' A.C. RES. 5.320  
20' A.C. RES. 5.320  
20' A.C. RES. 5.320  
20' A.C. RES. 5.320  
20' A.C. RES. 5.320

1221418(22)  
0400(22)

RY-ZZ BY 8/16  
144.3(1) 1/16  
20' G.E. & 20' Oil Agg.  
O. 072  
BY IR-44-3(55) (1988)  
20' A.C. RES. 0.072

0028-EE(10)M (1988)  
22' Oil Mat. Res. 1.866

EE-GB (1968)  
20' Oil Agg. Tr. 1.866

EE-S-1975(1) (1963)  
24' G.E. & Gran. 1.866

711289.9  
563700.5(5)

53172 Co. Line

635200  
Gasconade Co.  
390275  
563520  
Gasconade Co.

619488

74001  
73981

1400

IN K. WOODS  
WILDLIFE AREA

S

YY-70 (1970)  
20' Oil Agg. Tr. 5.913

S-YY-S-1969(1) (1960)  
24' G.E. & Gran. 5.913

316+949

0400

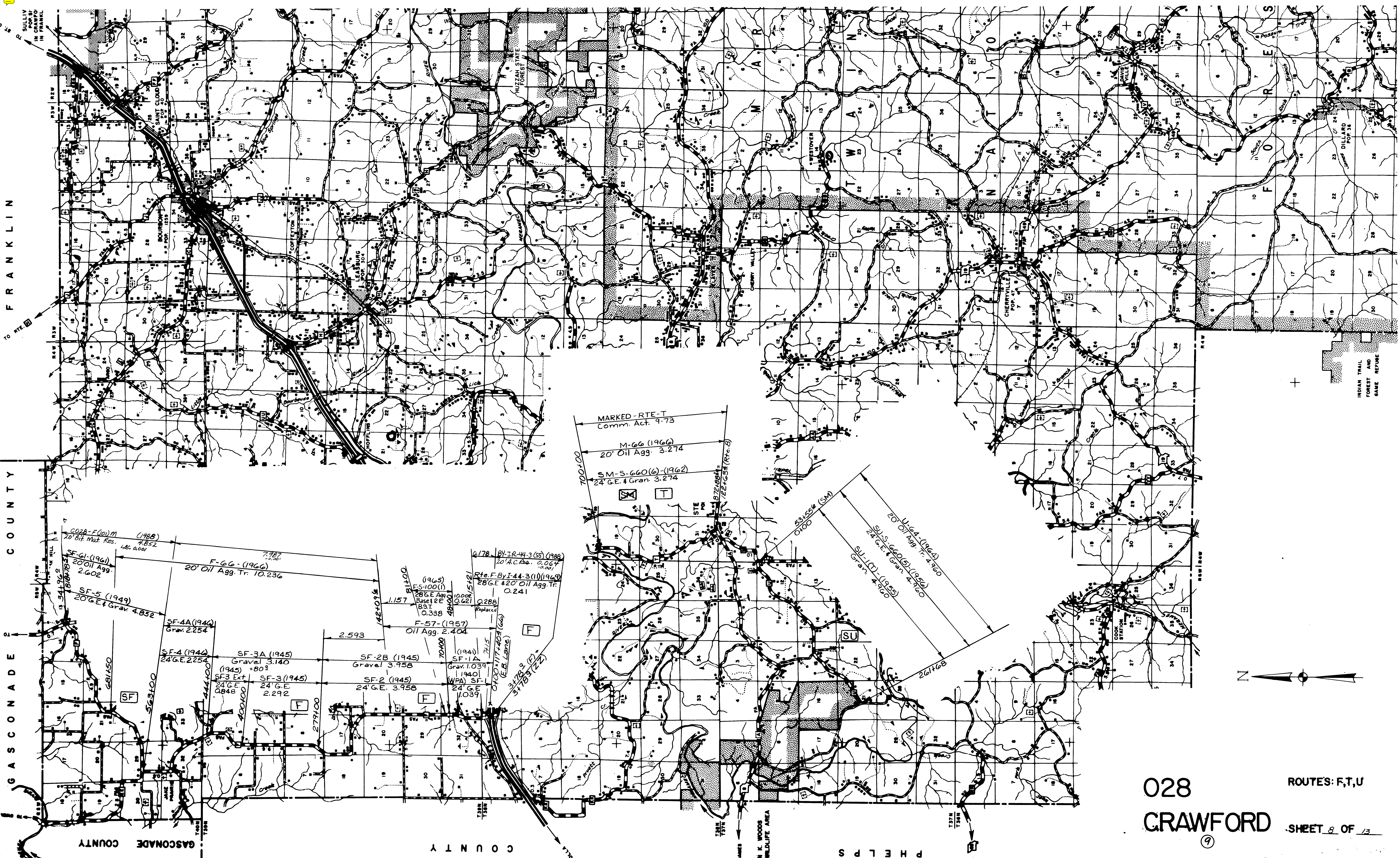
1124173 (Phelps Co. Line Rte. YY)

028  
CRAWFORD

ROUTES: EE,  
JJ, YY, ZZ  
SHEET 7 OF 13



INDIAN TRAIL  
FOREST AND  
GAME REFUGE



FRANKLIN COUNTY

GASCONADE COUNTY

PHILIPS COUNTY

MISSISSIPPI

SULLIVAN POP. 51 IN GRANT IN FRANKLIN

SAINT CLOUD (V) POP. 1235

CO228-F(10)M (1988) 20' Oil Max. Res. 1,852

SF-61 (1961) 20' Oil Agg. 2,602

SF-5 (1949) 20' G.E. & Grav. 4,852

SF-4A (1944) Grav. 2,254

SF-4 (1944) 24' G.E. 2,254

SF-3A (1945) Gravel 3,140

SF-3 Ext (1945) +801

SF-3 (1945) 24' G.E. 2,292

SF-2B (1945) Gravel 3,958

SF-2 (1945) 24' G.E. 3,958

SF-1A (1941) Grav. 1,039

SF-1 (1940) WPA SF-1 24' G.E. 1,039

COPELTON

CHERRYVILLE POP. 47

MUZAFFAR STATE FOREST (V)

BY-IR-44-3(SS) (1988) 20' A.C. Res. 0,064

MARKED-RTE-T Comm. Act. 9-73

M-66 (1966) 20' Oil Agg. 3,274

SM-S-660(6)-(1962) 24' G.E. & Grav. 3,274

20' Oil Agg. Tr. 4,260

SU-S-660(5)-(1956) 24' G.E. & Grav. 4,260

SU-1(C)-(1955) Grav. 4,260

20' Oil Agg. Tr. 4,260

53' 55" (SW) 0100

261468

10000

1157

1424096

2593

279100

7000

1000

1100

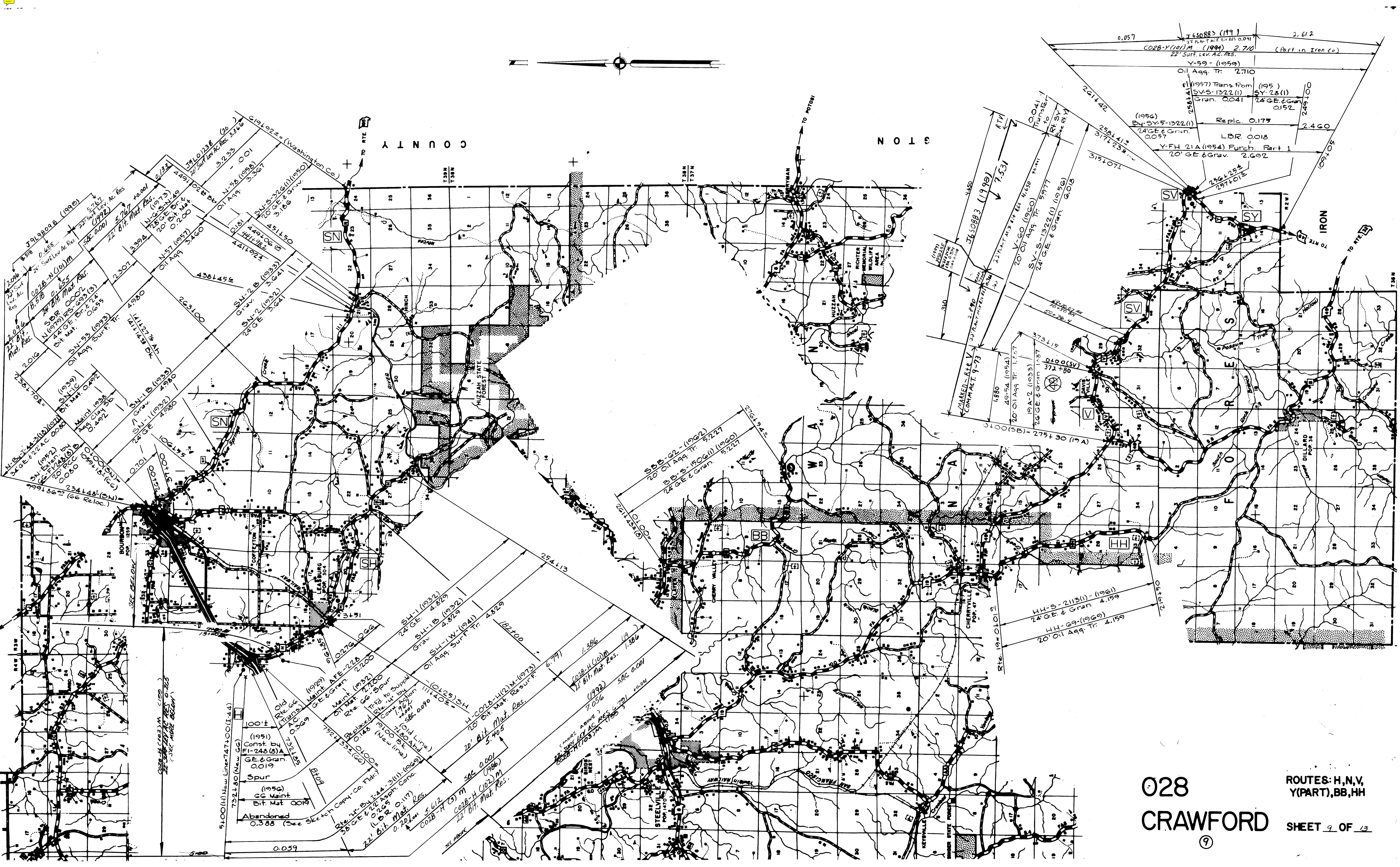
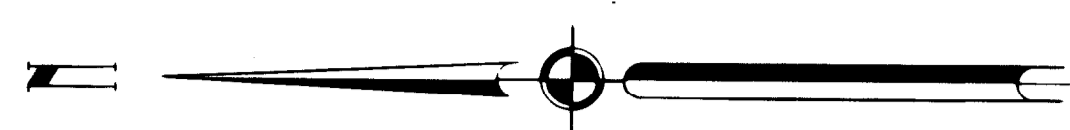
1000

028 ROUTES: F,T,U

CRAWFORD SHEET 8 OF 13

9

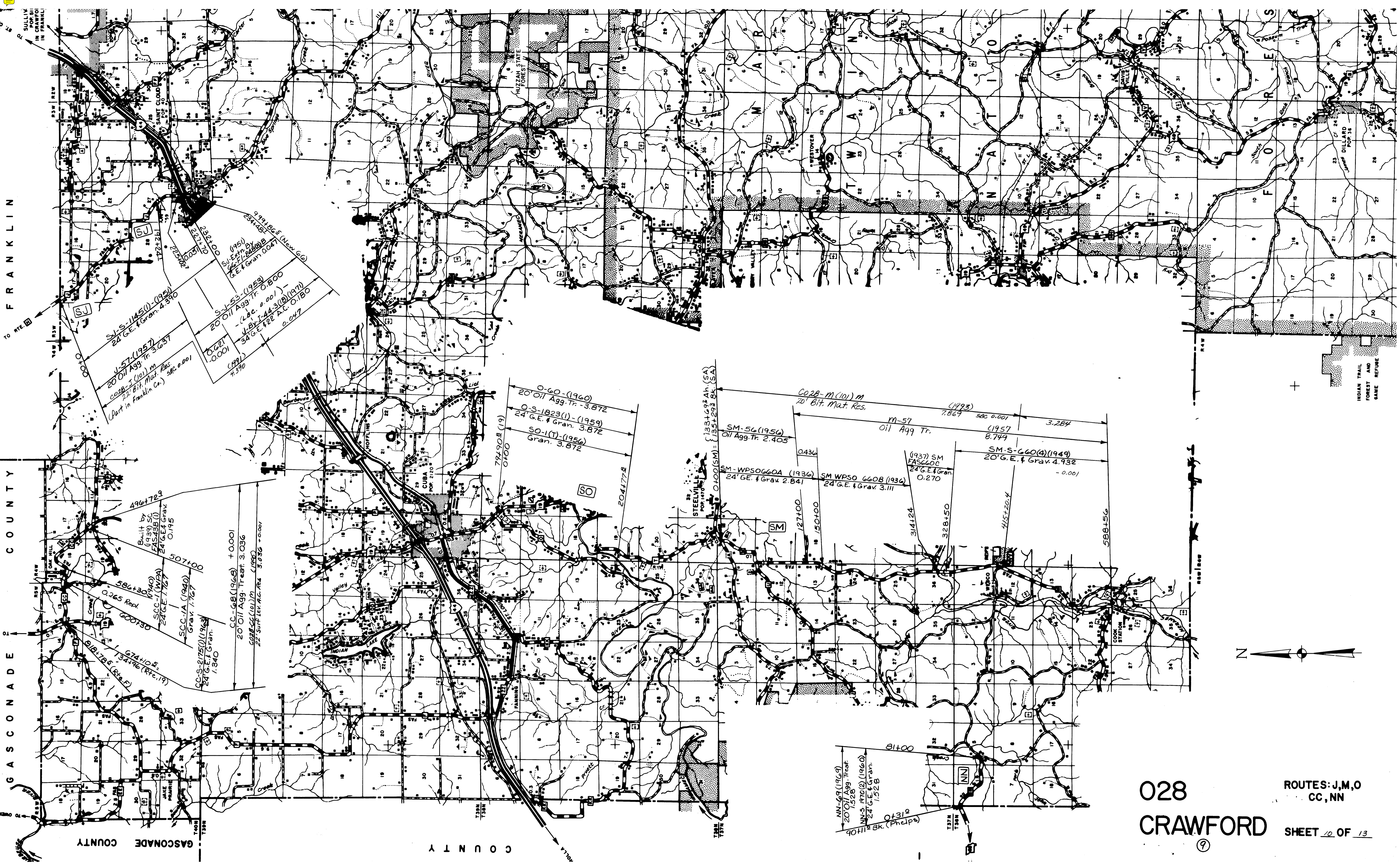




028  
CRAWFORD

ROUTES: H,N,V,  
Y(PART),BB,HH  
SHEET 9 OF 13

9



FRANKLIN COUNTY

GASCONADE COUNTY

GASCONADE COUNTY

FRANKLIN COUNTY

SULLIVAN POP. 11 IN CHAMPAIGN IN FRANKLIN

9911825 (New 60)  
2341439

S-1-53 (1953)  
20 Oil Agg. Tr. 0.800  
- (L.S.C. 0.001)  
V.B. 1-44-318 (1971)  
34 G.E. & Grav. 0.180  
0.047

S-1-5-11450 (1951)  
24 G.E. & Grav. 4.390

J-57 (1957)  
20 Oil Agg. Tr. 3.637  
0.028-1 (101) m  
22 Bit. Mat. Res.  
(Part in Franklin Co.) 586 0.001

0.621  
0.001  
4.390

4964729  
Built by  
(1939) SC  
FAS 438 (I)  
SCC-1 (WPA)  
24 G.E. & Grav.  
0.195

586+30  
0.265 Repl.  
600130

SCC-1A (1940)  
Grav. 1.767  
507+00

CC-S-21750 (1923)  
24 G.E. & Grav.  
1.340

CC-68 (1948) +0.001  
20 Oil Agg. Tr. 3.036  
0.028-2 (101) m (1980)  
22 SURT. Let. Agg. Res. 3.036 +0.001

744105  
134396 (Rtc. 19)

794908 (19)  
0100

0-60 (1960)  
20 Oil Agg. Tr. -3.872

0-5-1823 (I) (1959)  
24 G.E. & Grav. 3.872

50-1 (1956)  
Grav. 3.872

2041778

STEELVILLE  
POP. 1470

SM-56 (1956)  
Oil Agg. Tr. 2.405

SM-WPS0660A (1936)  
24 G.E. & Grav. 2.841

SM WPS0 660B (1936)  
24 G.E. & Grav. 3.111

0.436

127100

150+00

314124

328150

415+20.4

588+56

CO28-m (101) m  
20 Bit. Mat. Res.

m-57  
Oil Agg. Tr.

(1993)  
7.867 586 0.001 3.284

(1957)  
8.749

SM-S-660(4) (1949)  
20 G.E. & Grav. 4.932  
- 0.001

(1937) SM  
FAS 660C  
24 G.E. & Grav.  
0.270

COOK STATION

81400

NN-69 (1969)  
20 Oil Agg. Tr. 1.528

NN-S 1770(2) (1960)  
24 G.E. & Grav.  
1.528

0+312  
90 Hill Bk. (Phelps)

137N  
138N

INDIAN TRAIL  
FOREST AND  
GAME REFUGE

N

028  
CRAWFORD

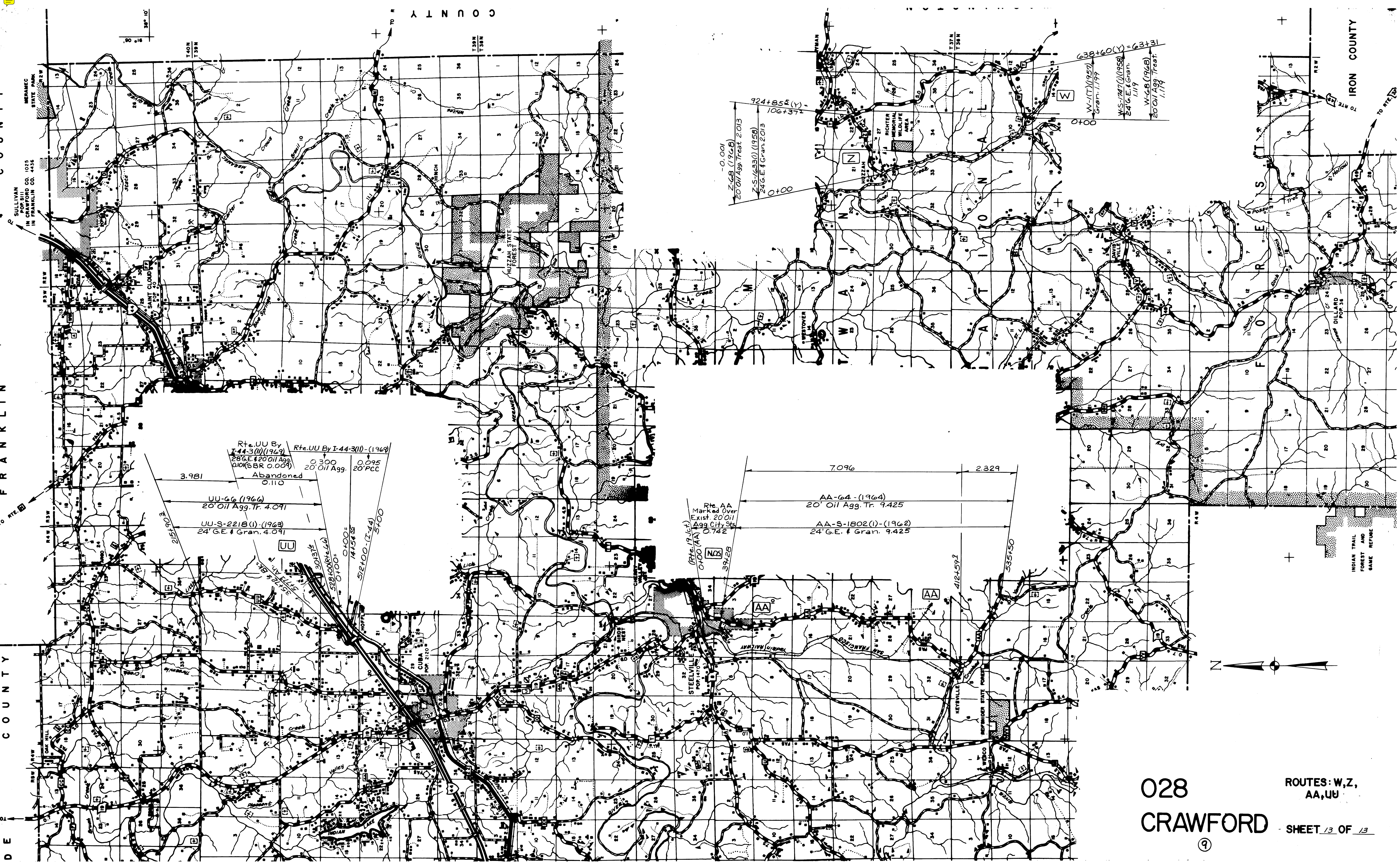
ROUTES: J, M, O  
CC, NN

SHEET 10 OF 13

9







SULLIVAN  
POP. 1025  
IN COMB. CO. 1025  
IN FRANKLIN CO. 4436

FRANKLIN COUNTY

DECATUR COUNTY

DE

FRANKLIN COUNTY

IRON COUNTY

35° 10'

T40N  
T39N

T39N  
T38N

FRANKLIN COUNTY

DECATUR COUNTY

IRON COUNTY

Rte. UU By I-44-3(1)(1969)  
28' G.E. & 20' Oil Agg.  
10' (SBR 0.009)

Abandoned  
0.110

UU-66 (1964)  
20' Oil Agg. Tr. 4.091

UU-S-2218(1)-(1963)  
24' G.E. & Gran. 4.091

3.981

251+90.3

30+37.9

512+00.0 (I-44)  
5+00

0+00 = 1415+4.35

0+00 = 512+00.0 (I-44)

5+00

Rte. AA  
Marked Over  
Exist. 20 Oil  
Agg. City Sts.  
0.742

(Rte. 19.56)  
0+00 (AA)  
39+28

AA-64 - (1964)  
20' Oil Agg. Tr. 9.425

AA-S-1802(1)-(1962)  
24' G.E. & Gran. 9.425

-0.001

Z-68 (1968)  
20' Oil Agg. Tr. 2.013

Z-S-(433(1)(1958)  
24' G.E. & Gran. 2.013

0+00

924+855(Y) -  
106+37.2

638+60(X) = 63+31

W-1(1957)  
Gran. 1.199

W-S-1747(1)(1958)  
24' G.E. & Gran.  
1.119

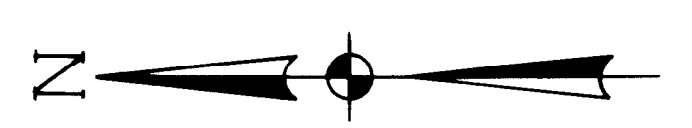
W-68 (1968)  
20' Oil Agg. Tr.  
1.114

7096

2329

412+59.2

335+50



028  
CRAWFORD

ROUTES: W,Z,  
AA,UU  
SHEET 13 OF 13

9